

# SwingRiser (HRG 220) Single Gate Operator Order Form

Single post operating a single gate panel from one controller

Date: \_\_\_\_\_ Person completing this form: \_\_\_\_\_  
 Distributor/Dealer: \_\_\_\_\_ Contact person: \_\_\_\_\_  
 Purchase order #: \_\_\_\_\_ Contact phone: \_\_\_\_\_  
 Job Name: \_\_\_\_\_ Job site City: \_\_\_\_\_ State: \_\_\_\_\_

## SwingRiser (HRG 220) Gate Panel:

Gate Weight: \_\_\_\_\_ lbs Gate Height: \_\_\_\_\_ ft Gate Panel Width (16' max): \_\_\_\_\_ ft

**A separate order form is required for each unique operator ordered. If you have multiple identical operators, with NO variances, INDICATE TOTAL QUALITY HERE: \_\_\_\_\_**

**INSTRUCTIONS:** Check one box within each of the numbered sections below. The Order Form must be fully completed and signed before the order will be processed.

**IMPORTANT:** Gate speed, direction of swing, and degree of swing are fixed and cannot be changed in the field. Operator handling is determined by **STANDING ON THE SECURE SIDE OF THE GATE LOOKING OUT** toward the public side of the gate.

### 1) Voltage and Phase:

#### A. Standard AC model, SwingRiser (HRG 220): AC Supply Voltage

60HZ  115 V 1Ø  208 V 1Ø  230 V 1Ø  230 V 3Ø  460 V 3Ø  
 50HZ  110 V 1Ø  220 V 1Ø  380 V 3Ø  440 V 3Ø

#### B. UPS Backup model, 24 VDC, SwingRiser UPS (HRG 220 DC): AC Input Voltage for UPS Backup. Choose voltage with care as chargers are not field convertible. \*115V requires a 30A branch circuit

115 V 1Ø 23A\*  208 - 230 V 1Ø 11.5A

### 2) UPS Battery Backup:

UPS Backup \$  No UPS Backup

**3) Gate Handling for the SwingRiser (HRG 220):**

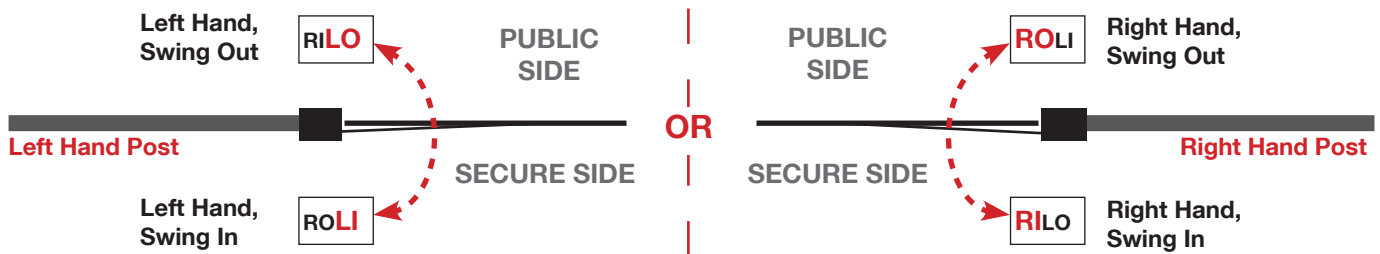
- Left hand, swing out       Right hand, swing out
- Left hand, swing in       Right hand, swing in

**REMINDER:** Gate speed, direction of swing, and degree of swing are fixed and cannot be changed in the field. Operator handing is determined by **STANDING ON THE SECURE SIDE OF THE GATE** looking out toward the public side.

- HySecurity SwingRiser posts have two main configurations, ROLI and RILO. These come in either 90 degree or 100 degree swing.
- ROLI stands for Right Out Left In. If this post is placed on the Right it will Swing Out and if placed on the Left will Swing In.
- RILO stands for Right In Left Out. If this post is placed on the Right it will Swing In and if placed on the Left will Swing Out.
- The Index Arm and access panels will always be located on the secure side

**4) Degree of Swing:**

- 90° swing (standard)
- 100° swing



**5) Operator Speed:**

- SwingRiser 14 (A speed): 14 second open/close cycle, 1,000 lb. gate weight max, 9' gate width max.
- SwingRiser 19 (B speed): 19 second open/close cycle, 1,600 lb. gate weight max, 16' gate width max.
- SwingRiser 30 (C speed): 30 second open/close cycle, 3,000 lb gate weight max, 16' gate width max.

**6) OUTER (square) Post Height:**

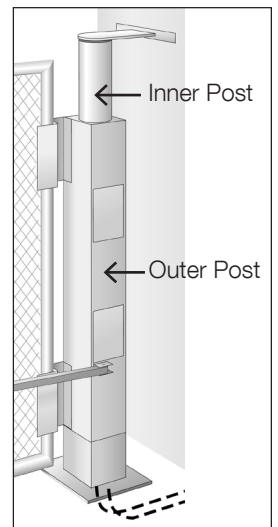
- 68" (Standard)
- Custom Height (Specify height on Customized SwingRiser™ Post on page 6)

**Note:** 156" custom height maximum. Outer Post height must be at least 12" shorter than Inner Post

**7) INNER (round) Post Height:**

- 80" (Standard)
- Custom Height (Specify height on customized requests drawing, Customized SwingRiser™ Post on page 6)

**Note:** 168" custom height maximum. Inner Post height must be at least 12" taller than Outer Post



- Indicates an additional charge. See Price Book for details.

**7) Hinges:**

- 2 Hinges in Standard Positions (Standard)
- 2 Hinges, Custom Positions (Specify positions on Customized SwingRiser™ Post on page 6) \$
- 3 Hinges (Specify positions on Customized SwingRiser™ Post on page 6) \$
- 4 Hinges (Specify positions on Customized SwingRiser™ Post on page 6) \$
- No Hinges \$

**8) Index Arm:**

- 1 Index Arm in Standard Position (Standard)
- 1 Index Arm, Custom Position (Specify position on Customized SwingRiser™ Post on page 6) \$
- 2 Index Arms, Custom Positions (Specify positions on Customized SwingRiser™ Post on page 6) \$
- 3 Index Arms, Custom Positions (Specify positions on Customized SwingRiser™ Post on page 6) \$
- No Index Arm \$

**9) Top Cap Brackets:** See drawing on SwingRiser™ Reference Information on page 5 for details

- 4" Pipe (4-1/2" OD) See restrictions on SwingRiser™ Reference Information on page 5
- 6" Pipe (6-5/8" OD)
- 8" Pipe (8-5/8" OD)
- Pilaster
- 6" Square Tube

**10) Lock (pin and receptacle):**

- Ground Lock
- Post Lock

**11) Heater:**

- Yes (Heater voltage will match Operator voltage) \$
- No

**12) Radio Receiver:**

- Single Channel Open \$
- No Radio Receiver

\$ - Indicates an additional charge. See Price Book for details.

**Hoses:**

Hoses are ordered on a separate order form. In most installations, the hose order is placed after the operator is installed to ensure that hose lengths are accurate.

SwingRiser (HRG 220) price includes up to 50 ft (15 m) of 1/4 inch hydraulic hose (custom cut to size by HySecurity according to installer’s field measurements). Two hoses are pre-filled with hydraulic fluid and supplied with quick disconnects. Submit completed and signed operator and hose order forms with each order. Additional hose is billed by the foot. **HySecurity will invoice for any hose over the included length of hose.**

**Double check that one box within each of the numbered sections above has been checked. Page 5 must be included if your order contains customizations. The Order Form must be fully completed and signed before the order will be processed.**

**It is the responsibility of the HySecurity Distributor/Dealer to verify that the information on this order form is accurate. As stated in the Global Sales Agreement, custom orders are non-returnable.**

**Order has been reviewed and approved by:**

\_\_\_\_\_  
PRINT NAME

\_\_\_\_\_  
HYSECURITY DISTRIBUTOR/DEALER

\_\_\_\_\_  
SIGNATURE

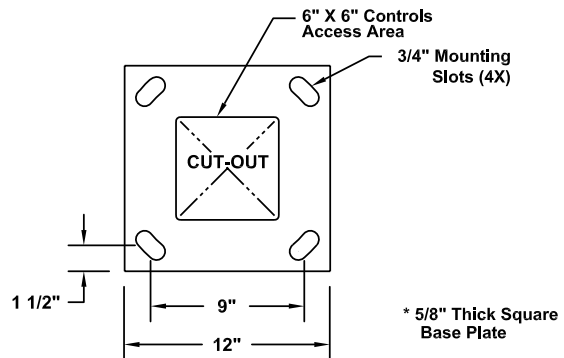
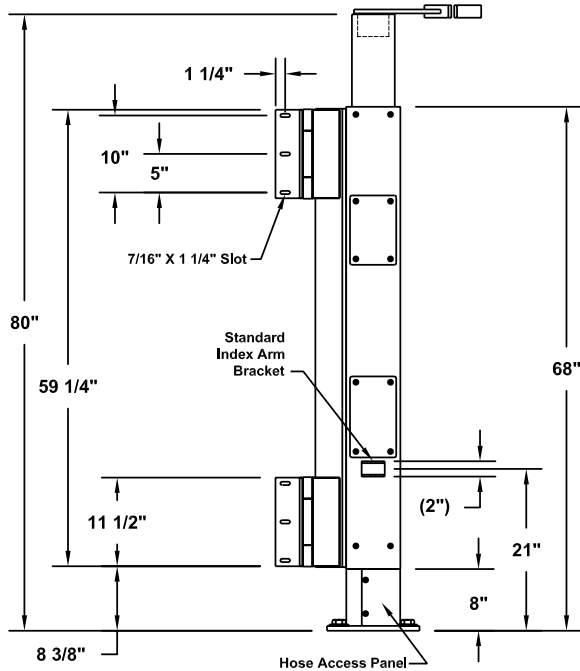
\_\_\_\_\_  
DATE

# SwingRiser™ Reference Information

Note: All Lateral Forces Must Be Supported By Backing Post / Pilaster.

## Standard Operator Configuration / Dimensions

Right Hand Post Shown - Left Hand Post Is Mirror Image

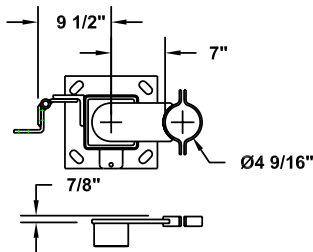


## Baseplate / Footprint Dimensions

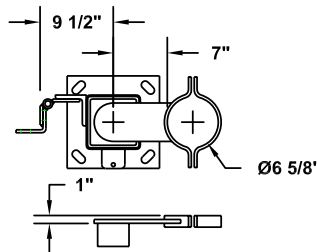
## Top Cap Options

### 4" Pipe Bracket

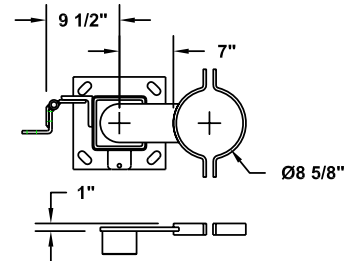
Use Restricted To 1000 LB, 12' Long Gate Panels Max.



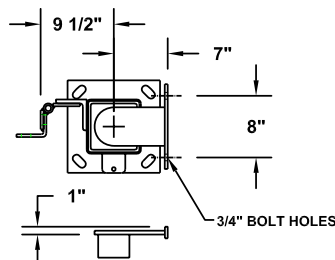
### 6" Pipe Bracket



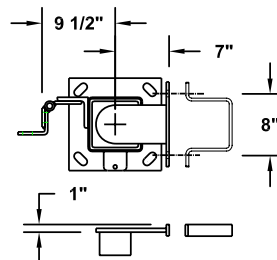
### 8" Pipe Bracket



### Pilaster Bracket



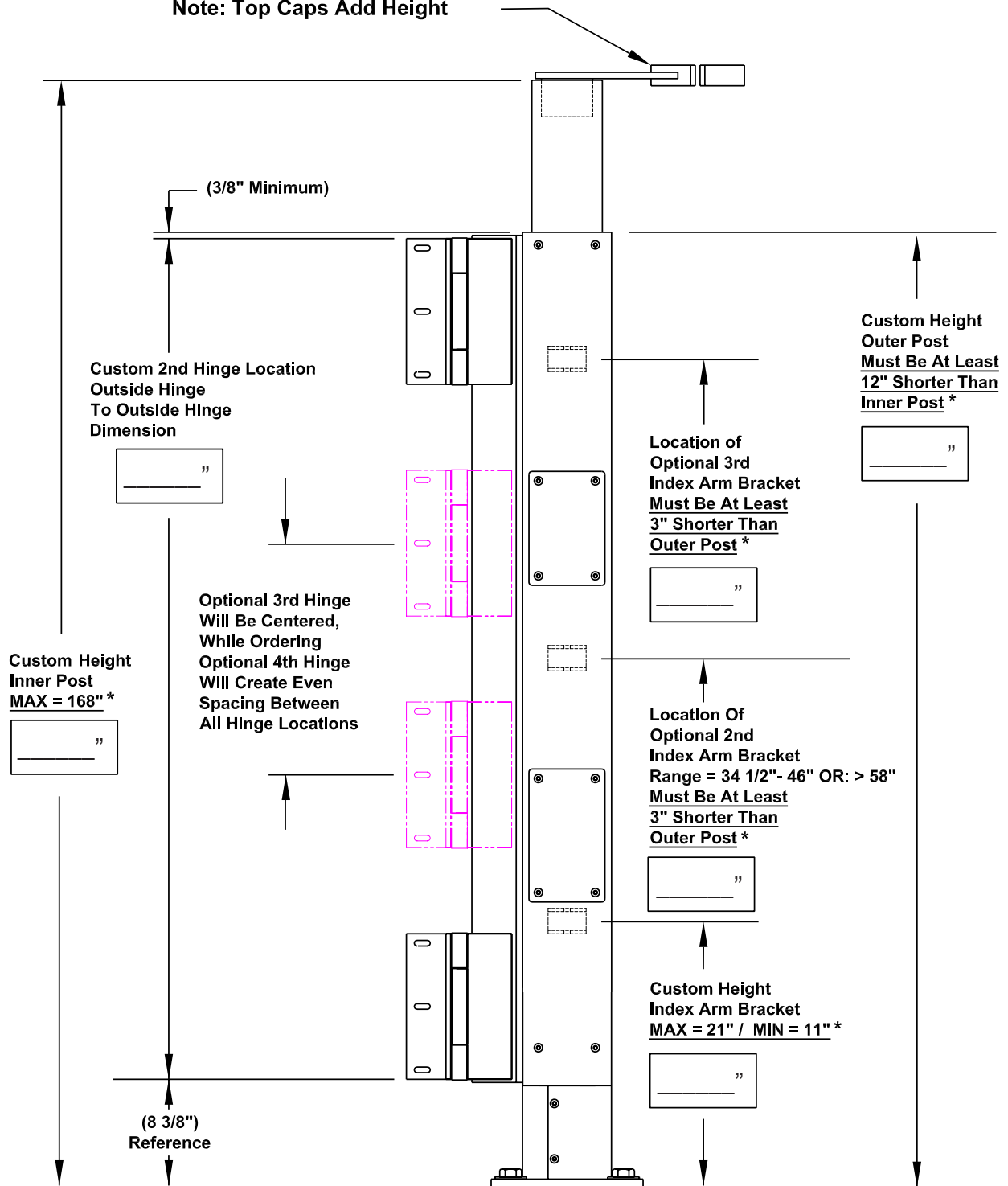
### 6" Sq Tube Bracket



# Customized SwingRiser™ Post

Note: All Lateral Forces Must Be Supported By Backing Post/Pilaster

Note: Top Caps Add Height



\* Important Minimum Or Maximum Dimension