

Order Form

SwingRiser Twin (HRG 222) Gate Operator

Two posts operating two gate panels from one controller

NOTE: If two gate panels or any part of the gate panels overlap each other when closed, each post requires its own controller. Order two SwingRiser (HRG 220) operators.

A separate order form is required for each unique operator ordered. If you have multiple identical operators, with NO variances, indicate total quantity here: _____

Date: _____ Person completing this form: _____

HySecurity Distributor/Dealer: _____ Contact person (if different than above): _____

Purchase order #: _____ Contact phone: _____

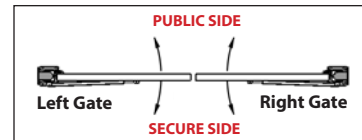
End user: _____ Job site city: _____ State: _____

SwingRiser Twin (HRG 222) Gate Panels:

Left Gate Weight: _____ lbs Right Gate Weight: _____ lbs

Left Gate Height: _____ ft Right Gate Height: _____ ft

Gate Panel Width (16' max): Left Panel: _____ ft Right Panel: _____ ft




Check one box for each post within the numbered sections below. This Order Form must be fully and before the order will be processed.

Gate speed, direction of swing, and degree of swing are fixed and cannot be changed in the field. Operator handing is determined by STANDING ON THE SECURE SIDE OF THE GATE LOOKING OUT toward the public side of the gate.

1) Select Operator Speed:

- SwingRiser 14 (A speed): 14 second open/close cycle, 1,000 lb. gate weight max, 9' gate width max.
- SwingRiser 19 (B speed): 19 second open/close cycle, 1,600 lb. gate weight max, 16' gate width max.
- SwingRiser 30 (C speed): 30 second open/close cycle, 3,000 lb. gate weight max, 16' gate width max.

2) UPS Battery Backup:

- UPS Backup 
- No UPS Backup

 - Indicates an additional charge. See Price Book for details.

3) **Voltage and Phase:**

A: Standard AC model, SwingRiser Twin (HRG 222): AC Supply Voltage


- 60HZ:** 208 V 1Ø 230 V 1Ø 208 V 3Ø 230 V 3Ø 460 V 3Ø 575 V 3Ø
50HZ: 220 V 1Ø 220 V 3Ø 380 V 3Ø

B. UPS Backup model, 24 VDC, SwingRiser UPS (HRG 222 DC): AC Input Voltage for UPS Backup. Choose voltage with care as chargers are not field convertible. *115V requires a 30A branch circuit


- 115 V 1Ø 23A* 208 - 230 V 1Ø 11.5A

4) **OUTER (square) Post Height:** Check one box for each post

Left Post

- 68" (Standard)
 Custom Height * 


Right Post

- 68" (Standard)
 Custom Height * 


Note: 156" custom height maximum. Outer Post height must be at least 12" shorter than Inner Post

5) **INNER (round) Post Height:** Check one box for each post

Left Post

- 80" (Standard)
 Custom Height * 





Right Post

- 80" (Standard)
 Custom Height * 



Note: 168" custom height maximum. Inner Post height must be at least 12" taller than Outer Post

6) **Hinges:** Check one box for each post

Left Post





- 2 Hinges in Standard Positions (Standard)
 2 Hinges, Custom Positions * 
 3 Hinges * 
 4 Hinges * 
 No Hinges 

Right Post





- 2 Hinges in Standard Positions (Standard)
 2 Hinges, Custom Positions * 
 3 Hinges * 
 4 Hinges * 
 No Hinges 

7) **Index Arm:** Check one box for each post

Left Post

- 1 Index Arm in Standard Position (Standard)
 1 Index Arm, Custom Position * 
 2 Index Arms, Custom Positions * 
 3 Index Arms, Custom Positions * 
 No Index Arm 

Right Post

- 1 Index Arm in Standard Position (Standard)
 1 Index Arm, Custom Position * 
 2 Index Arms, Custom Positions * 
 3 Index Arms, Custom Positions * 
 No Index Arm 

* Specify all Custom Heights and Positions on Customized Post Diagrams, pages 5 and 6.

8) **Top Cap Brackets:** Check one box for each post. See drawing on page 4 for details.

Left Post for Left Gate Panel: (Check one box)

- 4" Pipe (4-1/2" OD) See restrictions on page 4
 Pilaster

- 6" Pipe (6-5/8" OD)
 6" Square Tube

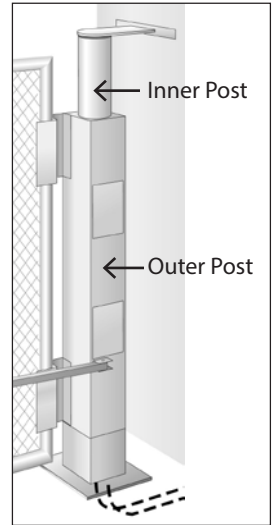
- 8" Pipe (8-5/8" OD)

Right Post for Right Gate Panel: (Check one box)

- 4" Pipe (4-1/2" OD) See restrictions on page 4
 Pilaster

- 6" Pipe (6-5/8" OD)
 6" Square Tube

- 8" Pipe (8-5/8" OD)



REMINDER: Gate speed, direction of swing, and degree of swing are fixed and cannot be changed in the field. Operator handing is determined by STANDING ON THE SECURE SIDE OF THE GATE looking out toward the public side.

9) Degree of Swing:

(Check one box for each gate panel)

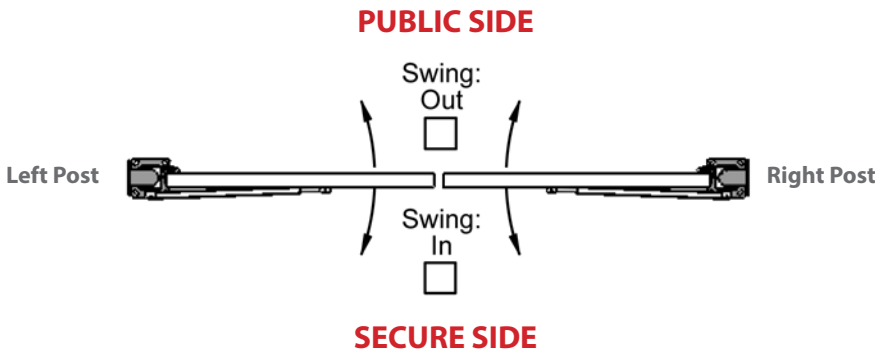
Left Post:

- 90° swing (standard)
- 100° swing

Right Post:

- 90° swing (standard)
- 100° swing

10) Gate Handing for the SwingRiser Twin (HRG 222):



11) Heater:

- Yes (Heater voltage will match Operator voltage)
- No

12) Radio Receiver:

- Single Channel Open
- No Radio Receiver

Lock(s):

One ground lock pin and receptacle for each SwingRiser Twin (HRG 222) gate panel is provided.

Hoses:

Hoses are ordered on a separate order form. In most installations, the hose order is placed after the operator is installed to ensure that hose lengths are accurate.

SwingRiser Twin (HRG 222) price includes up to 150 ft (45.7 m) of 1/4 inch hydraulic hose (custom cut to size by HySecurity according to installer’s field measurements). Four hoses are pre-filled with hydraulic fluid and supplied with quick disconnects. Submit completed and signed operator and hose order forms with each order. Additional hose is billed by the foot. **HySecurity will invoice for any hose over the included length of hose.**

Double check that one box for each post within the numbered sections above has been checked. Page 5 must be included if your order contains customizations. The Order Form must be fully completed and signed before the order will be processed.

It is the responsibility of the HySecurity Distributor/Dealer to verify that the information on this order form is accurate. As stated in the Global Sales Agreement, custom orders are non-returnable.

Order has been reviewed and approved by:

HYSECURITY DISTRIBUTOR/DEALER PRINT NAME

SIGNATURE DATE

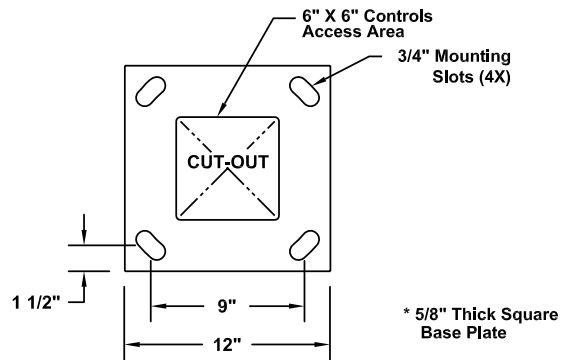
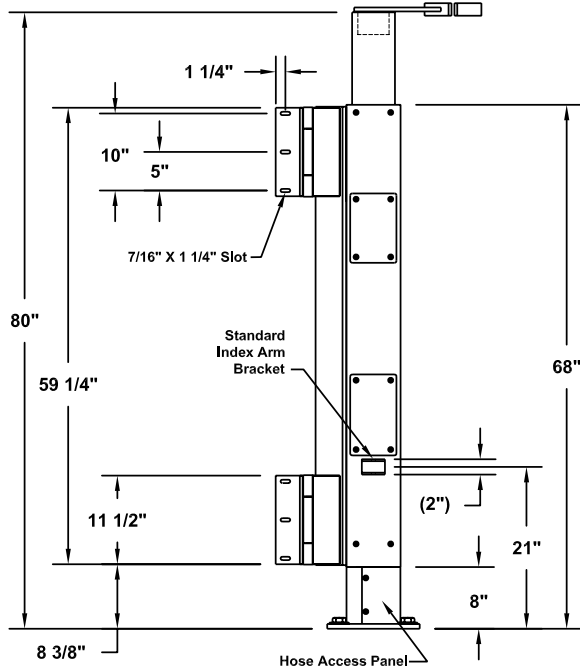
- Indicates an additional charge. See Price Book for details.

SwingRiser™ Reference Information

Note: All Lateral Forces Must Be Supported By Backing Post / Pilaster.

Standard Operator Configuration / Dimensions

Right Hand Post Shown - Left Hand Post Is Mirror Image

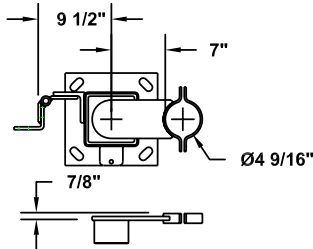


Baseplate / Footprint Dimensions

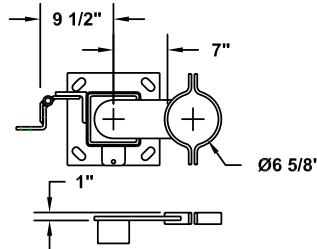
Top Cap Options

4" Pipe Bracket

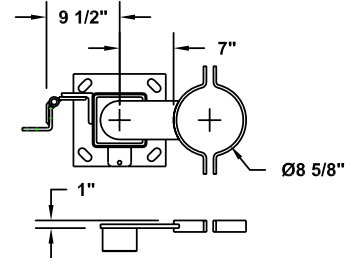
Use Restricted To 1000 LB, 12' Long Gate Panels Max.



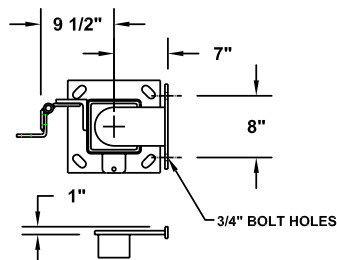
6" Pipe Bracket



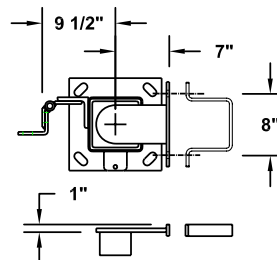
8" Pipe Bracket



Pilaster Bracket

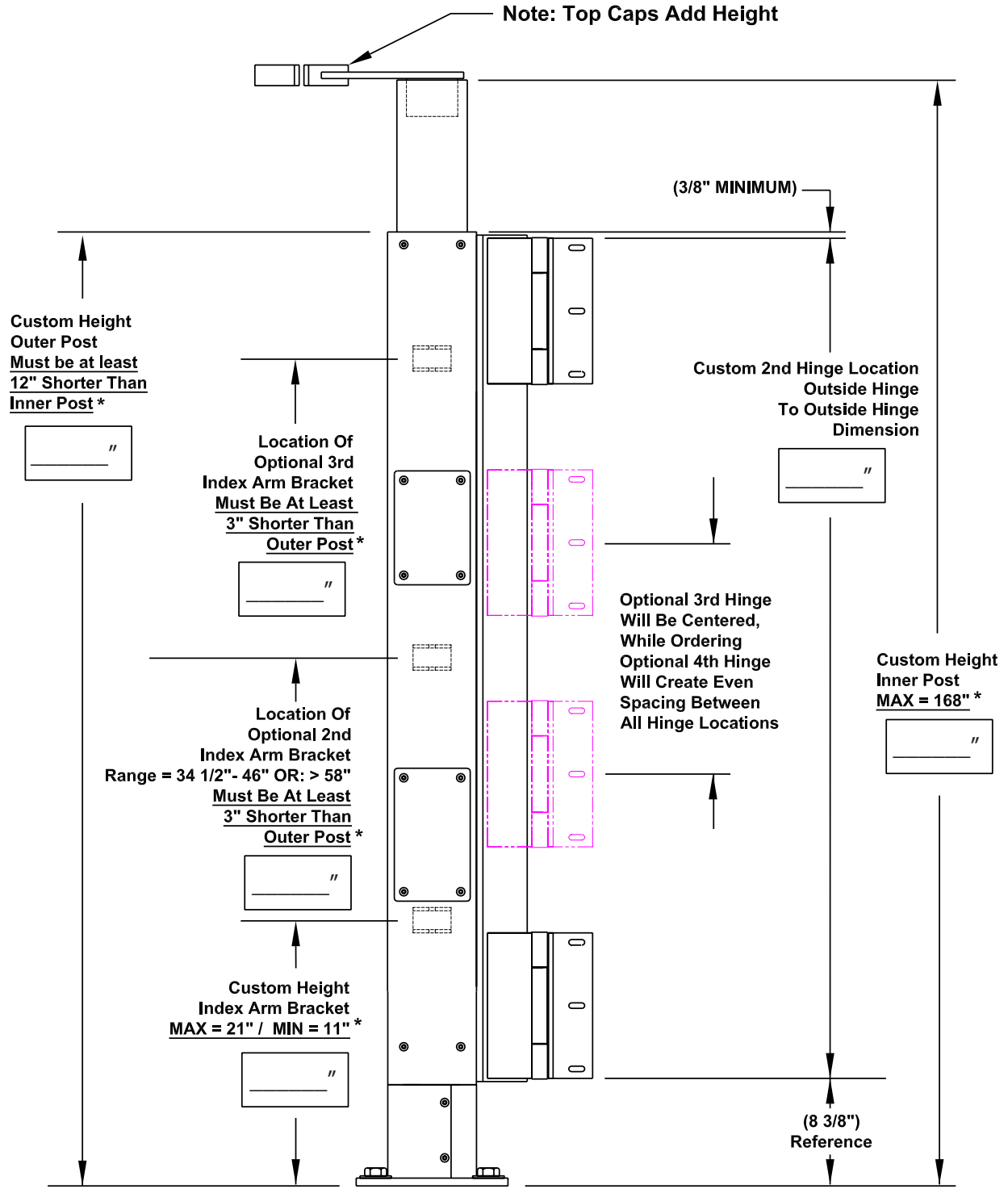


6" Sq Tube Bracket



Customized "Left" SwingRiser™ Post

Note: All Lateral Forces Must Be Supported By Backing Post / Pilaster.

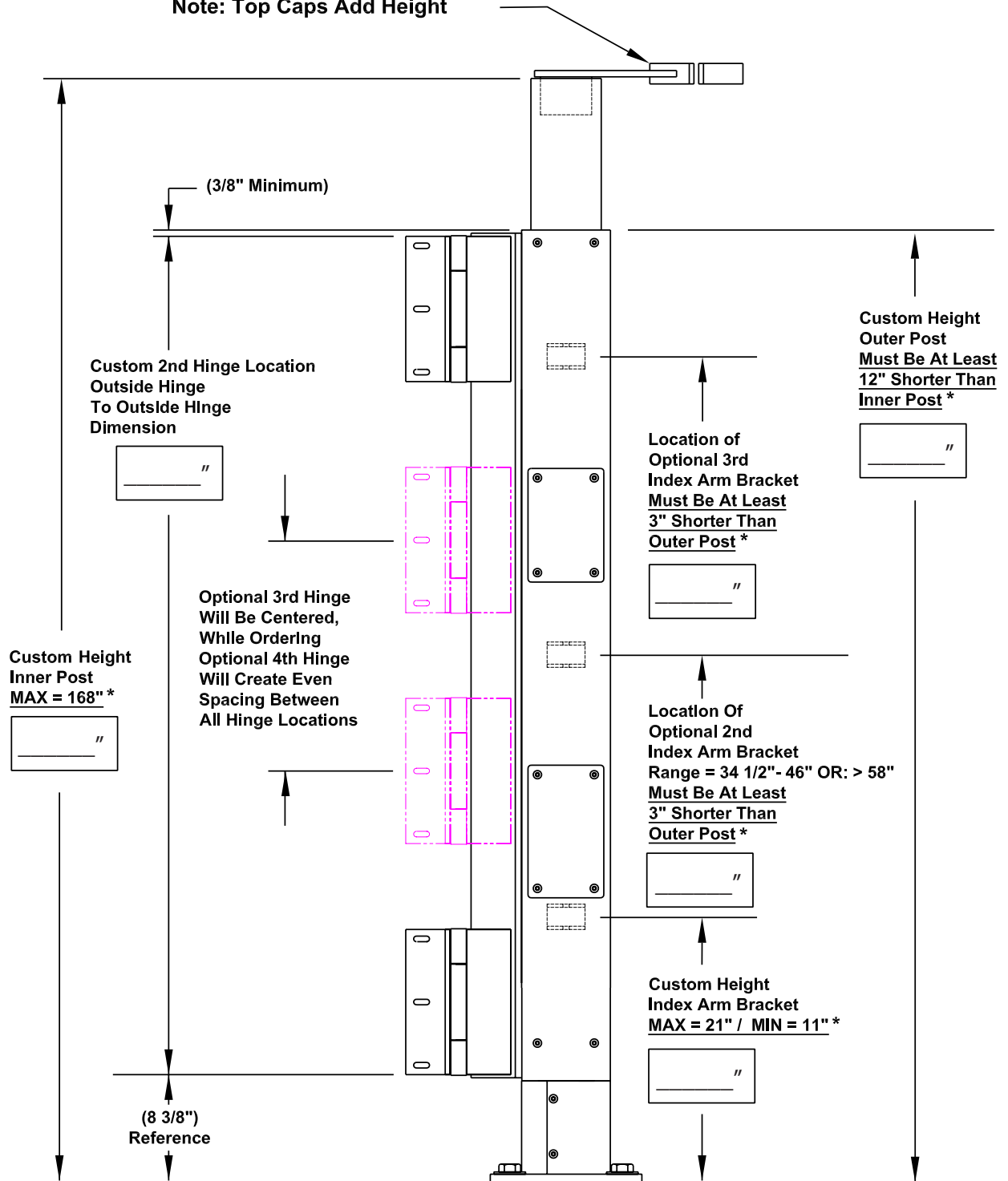


* Important Minimum Or Maximum Dimension

Customized "Right" SwingRiser™ Post

Note: All Lateral Forces Must Be Supported By Backing Post / Pilaster.

Note: Top Caps Add Height



* Important Minimum Or Maximum Dimension