

## WedgeSmart DC: Safety Striping



Before servicing, lock wedge plate in plate up position. Use the locking pin as shown in the illustrations. Turn off all power disconnect switches.

### What's in the Box

- Anti-Slip Tape (10 pieces)
- Installation Instructions

### Tools required

- Scraper (removes old tape adhesive)
- Surface cleaner (see page 2)
- Clean rags for wiping surface
- Hand roller
- Marking pencil (optional)

### Raise the Wedge Plate

To secure the wedge plate in the raised position:

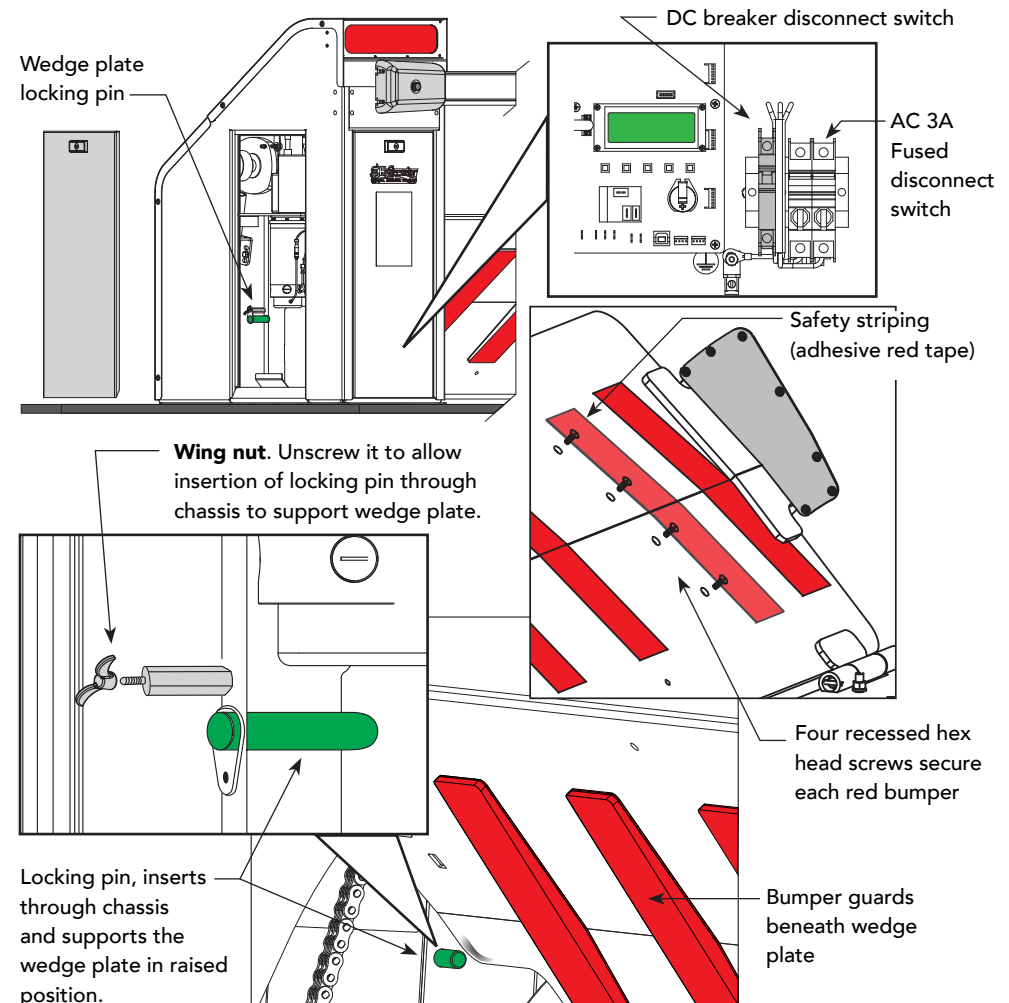
1. Remove the front access panel. To raise the wedge plate, press CLOSE.
2. When all movement stops, turn off the DC and AC disconnect switches.
3. Remove the side access panel and unscrew the wing nut securing the wedge plate locking pin.
4. To lock the wedge plate in the raised position, slide the locking pin through the chassis so it engages beneath the wedge plate.

### Replace Safety Tape

To replace adhesive safety tape, review manufacturer's instructions on page 2 and then, take the following steps:

1. The screws that secure the red bumpers are recessed beneath the red safety tape on top of the wedge plate. Use gloves and a plastic scraper to remove the industrial strength adhesive tape.
2. Clean the surface. Refer to page 2 for appropriate cleaners. Allow to dry.
3. Peel off backing paper and smooth adhesive safety tape into place. Apply pressure. Use a hand roller to remove bubbles and create proper adhesion.

For more information, refer to *General Maintenance* in the *WedgeSmart DC Programming & Operating Manual* found online at [www.hysecurity.com](http://www.hysecurity.com)



## Technical Support

For technical support, call your installer or authorized HySecurity distributor. Obtain the serial number of your operator before calling.

For the name of a distributor near you, call HySecurity at 800-321-9947.



FLOOR SAFETY &amp; MAINTENANCE PRODUCTS

266 Wildcat Rd., Toronto, ON M3J 2N5  
Tel: (416) 667-1788 • Fax: (416) 667-1783  
sales@noskidding.com • www.noskidding.com

## **Recommended Installation Instructions for NO SKIDDING ANTI-SLIP SAFETY TAPES**

**Please Read Before Installation**

### **SURFACE PREPARATION**

Our Anti-Slip Tape can be quickly applied to most surfaces that are clean, dry and smooth. Surfaces must be free of moisture, dust, rust, and dirt. Body oils, and grease, wax, soap, or detergent films for proper adhesion. Loose scale, rust, paint, concrete or dirt must be removed from surface by wire brushing, sanding, sandblasting or other means.

### **CLEANING INSTRUCTIONS**

**Commercial Cleaners:** Cleaners such as those based on butyl cello solve (with proper ventilation) or non-phosphate alkaline compounds strong enough to emulsify the various contaminants, can be used to clean the mounting surface. Follow the manufacturer's instructions according to type of cleaner used. For soap or grease use No Skidding On Guard Degreaser.

**Test for Clean Surface:** Put a few drops of water on the cleaned surface. If the water forms droplets or beads up, repeat the cleaning procedure. When the water spreads out and wets the surface easily, the surface is clean enough to apply the Anti-Slip Tape.

### **IMPORTANT**

Do not apply to a porous or absorbent surface. Porous concrete or wood must be sealed with an appropriate primer before installation of tape. To ensure a better bond, pass a warm hair dryer down the length of the tape or mat immediately before installing. This will make the contact adhesive more tacky and ensure a stronger bond. This is especially important if the tape is stored in a cool area or in the trunk of a vehicle overnight in cold weather

**Installations:** After determining that the surface is clean, smooth and dry, slowly remove the release paper from the underside of the tape, to expose the pressure-sensitive adhesive. Be certain that the tape is in the proper alignment, use foot pressure, vinyl wallpaper smoother, roller or soft rubber mallet to

**Temperature:** Be sure substrate temperature is above 50 °F/10 °C.

**Application To Wood:** New wood should be primed, or painted prior to application of Anti Slip Tape. Loose paint should be removed from old painted surfaces. ANTI-SLIP TAPE WILL NOT BOND TO DAMP WOOD SURFACES TREATED WITH PENTA, CREOSOTE OR OTHER WOOD PRESERVATIVES.

**Application To Metal:** Best adhesion is obtained when the product is applied to painted or primed surfaces. Loose scale, painted or rust should be removed prior to painting or priming old new surfaces.

**Application To Smooth Concrete, Marble Tile, Terrazzo, Etc.:** Clean thoroughly with commercial vacuum cleaner to remove dust and dirt. Clean, if necessary as outlined above. NOTE: TAPE IS NOT RECOMMENDED FOR USE OVER ROUGH OR BROOM FINISHED CONCRETE.

**Ready To Use:** The Anti-Slip Tape can be walked on immediately. Maximum bond of the adhesive occurs about 24 hours after installation.

### **CUSTOMER PLEASE NOTE**

No warranties expressed or implied are made or to be inferred. Sellers and manufacturers only obligation shall be to replace such quantity of the product proved to be defective. Neither seller nor manufacturers shall be liable for any injury, loss or damage, direct or consequential, arising out of the use of the inability to use the product. Before installing, purchaser shall determine the suitability of the product for its intended use and assumes all risk and liability whatsoever in connection therewith.  
4/7/2015