

## Work Instructions: HTG-8



Revision A, 7/28/04

## HTG 320-8: Barrier Arm, cable assembly

Refer to drawing T2000069, page 2 for bill of materials.

Attach (shorter) upper cable rig MTTBA RIG UP1 to support tube. Adjust turnbuckle to widest position.

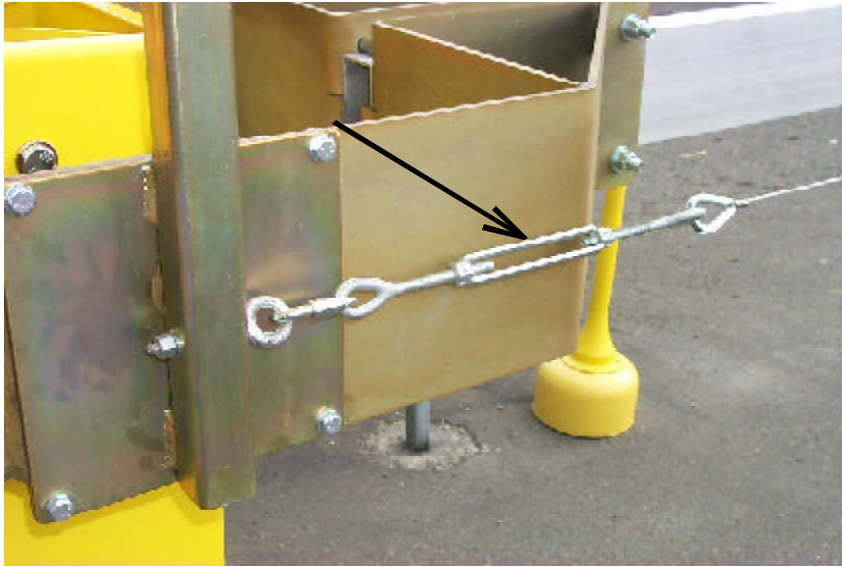
Run other end of cable to middle of aluminum barrier arm. Mark center of eye at middle of arm. Drill 1/2" hole. Insert 1/2" bushing and attach cable ends according to drawing T2000074.

Adjust turnbuckle toward narrow position to tighten cable. Verify tension is even on both sides to avoid bending the barrier arm in one direction or the other.

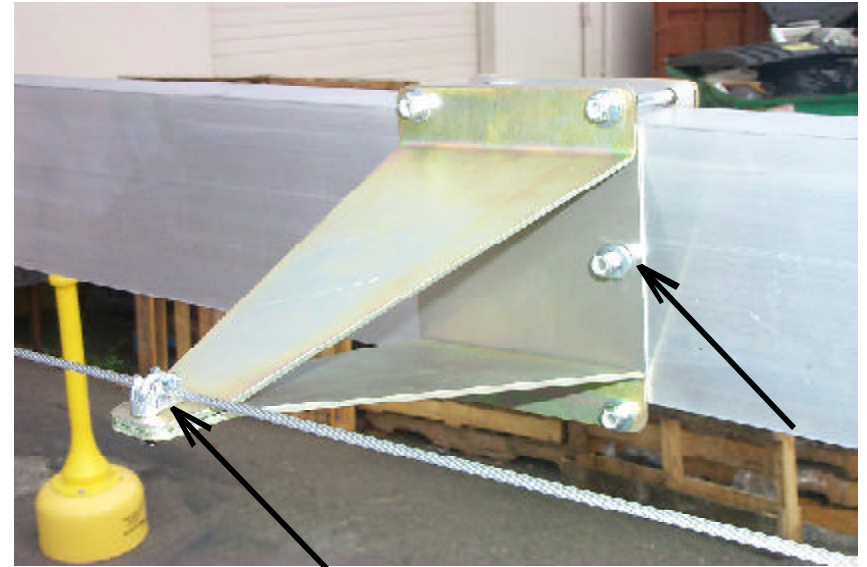


page 3

## Work Instructions: HTG-8



## HTG 320-8: Barrier Arm, cable assembly



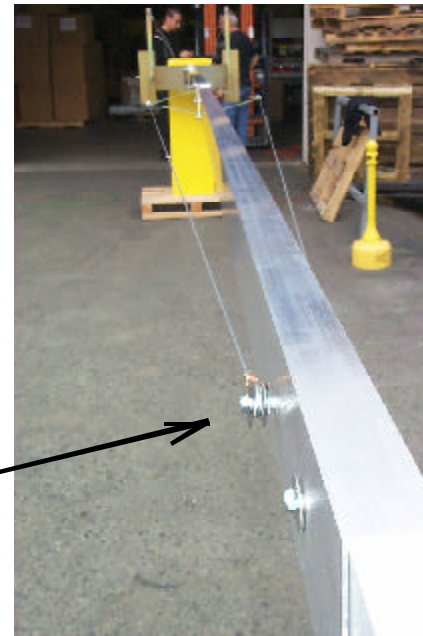
Refer to drawing T2000069, page 2 for bill of materials.

Attach (longer) lower cable rig MTTBA RIG LOW to support tube. Adjust turnbuckle to widest position.

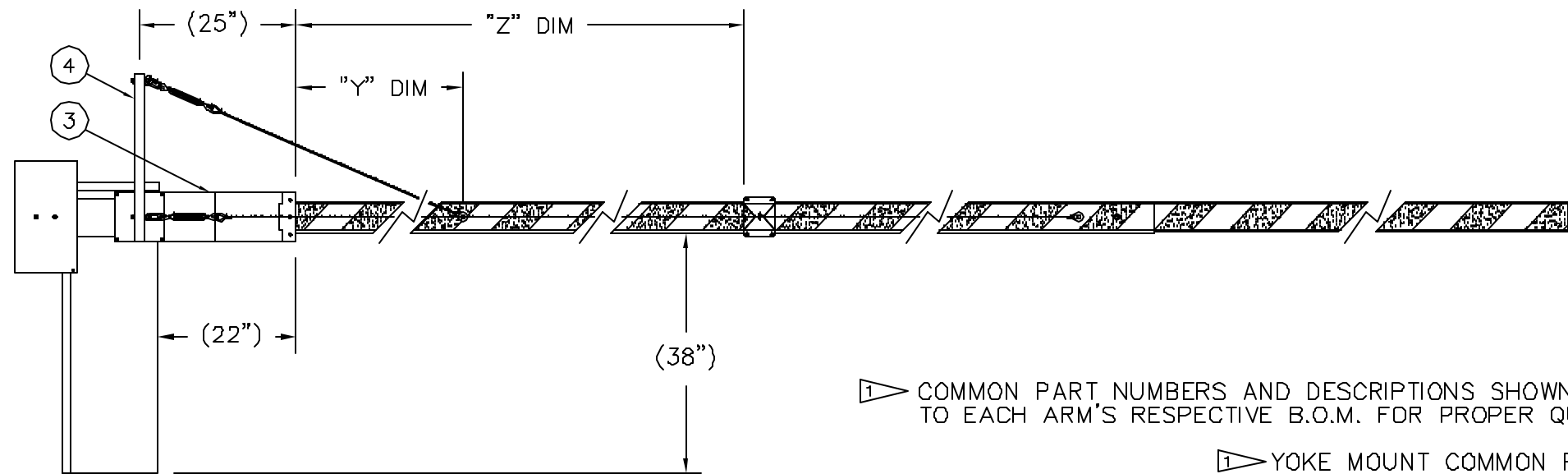
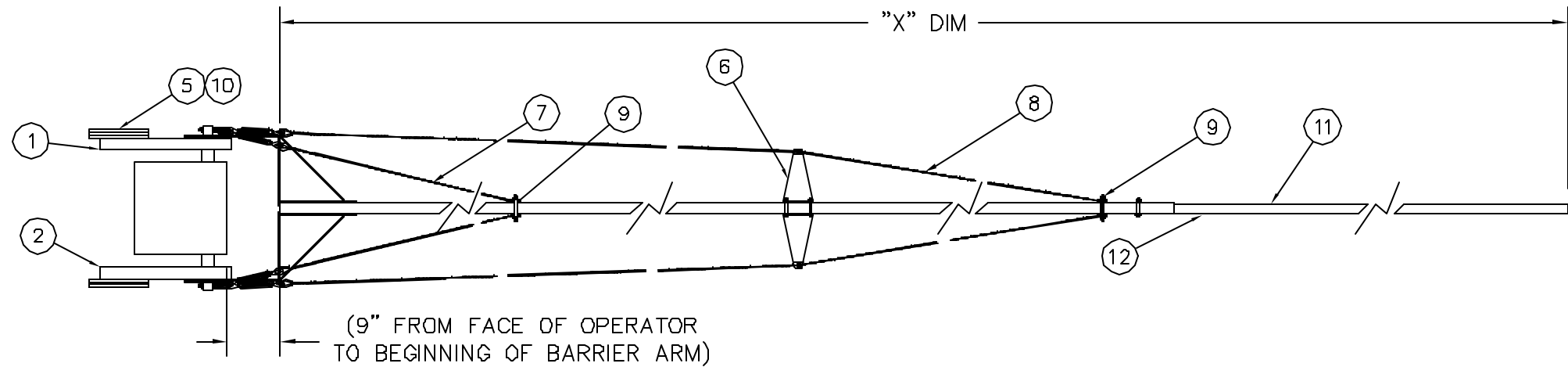
Attach spreader assembly MSCSK 001. Locate according to drawing T2000069, page 2. Drill 1/4" hole to secure location of spreader assembly.

Run cable through the cable clamp eye on spreader assembly. Run other end of cable to middle of aluminum barrier arm. Mark center of eye at middle of arm. Drill 1/2" hole. Insert 1/2" bushing and attach cable ends according to drawing T2000074.

Revision A, 7/28/04



Adjust turnbuckle toward narrow position to tighten cable. Verify tension is even on both sides to avoid bending the barrier arm in one direction or the other.



1 COMMON PART NUMBERS AND DESCRIPTIONS SHOWN FOR REFERENCE ONLY, REFER TO EACH ARM'S RESPECTIVE B.O.M. FOR PROPER QUANTITIES AND LENGTHS.

1 YOKE MOUNT COMMON PARTS

STANDARD ALUMINUM/FIBERGLASS YOKE MOUNT CONFIGURATIONS

| "X" DIM | ASS'Y/BOM NUMBER | "Y" DIM | "Z" DIM | ALU LENGTH | F/G LENGTH | QTY ITEM 5 |
|---------|------------------|---------|---------|------------|------------|------------|
| 26'     | AMITB 026 AFY    | --      | --      | 20'        | 8'         | 10         |
| 28'     | AMITB 028 AFY    | --      | --      | 20'        | 10'        | 12         |
| 30'     | AMITB 030 AFY    | 8'      | 12'     | 24'        | 8'         | 16         |
| 32'     | AMITB 032 AFY    | 8'      | 12'     | 24'        | 10'        | 18         |
| 34'     | AMITB 034 AFY    | 8'      | 12'     | 24'        | 12'        | 22         |
| 36'     | AMITB 036 AFY    | 8'      | 12'     | 24'        | 14'        | 24         |

| ITEM | PART NO.       | MATERIAL                                 |
|------|----------------|--|
| 1    | MTBMT 320 CWTL | MOUNT, CNTR WGHT, LH                     |
| 2    | MTBMT 320 CWTR | MOUNT, CNTR WGHT, RH                     |
| 3    | MTBMT 320 A    | MOUNT; YOKE ARM HALF, 320                |
| 4    | MTBBR SVC      | ARM MOUNT, HTG 320, SIDE KIT             |
| 5    | MTBCW 008 Y    | COUNTERWEIGHT, YELLOW, 10X18X.5          |
| 6    | MTCSK 001      | BRACE, CABLE, SPREADER@HTG SPREADER BAR  |
| 7    | MTBBA RIG UP1  | CABLE, TURNBUCKLE RIG, UPPER, HTG        |
| 8    | MTBBA RIG LOW  | CABLE, TURNBUCKLE RIG, LOWER, HTG        |
| 9    | MTCSK 002      | HTG, CABLE ANCHOR KIT                    |
| 10   | MFAAT 008 XXX  | ALLTHREAD, 1/2-13 X XXXLONG              |
| 11   | MTBST 064 OWLH | STRIPE TAPE, ORANGE/WHITE 4", LEFT HAND  |
| 12   | MTBST 064 OWRH | STRIPE TAPE, ORANGE/WHITE 4", RIGHT HAND |

UNLESS OTHERWISE SPECIFIED TOLERANCES ON DIMS ARE DECIMAL

2 PLS (0.XX) = ±.02  
3 PLS (0.XXX) = ±.005  
ANGLES = ±0.5°

COPYRIGHT © 2001 HY-SECURITY GATE, INC. THIS DOCUMENT CONTAINS CONFIDENTIAL & TRADE SECRET INFORMATION. BY ACCEPTING THIS DOCUMENT THE RECEIVER AGREES THAT, UNLESS AUTHORIZED IN WRITING BY HY-SECURITY GATE, INC. IT WILL NOT DISCLOSE TO THIRD PARTIES EITHER THIS DOCUMENT OR THE TRADE SECRET INFORMATION CONTAINED HEREIN, AND WILL UPON DEMAND RETURN THIS DOCUMENT, ALL COPIES THEREOF, AND ALL MATERIAL COPIED THEREFROM.

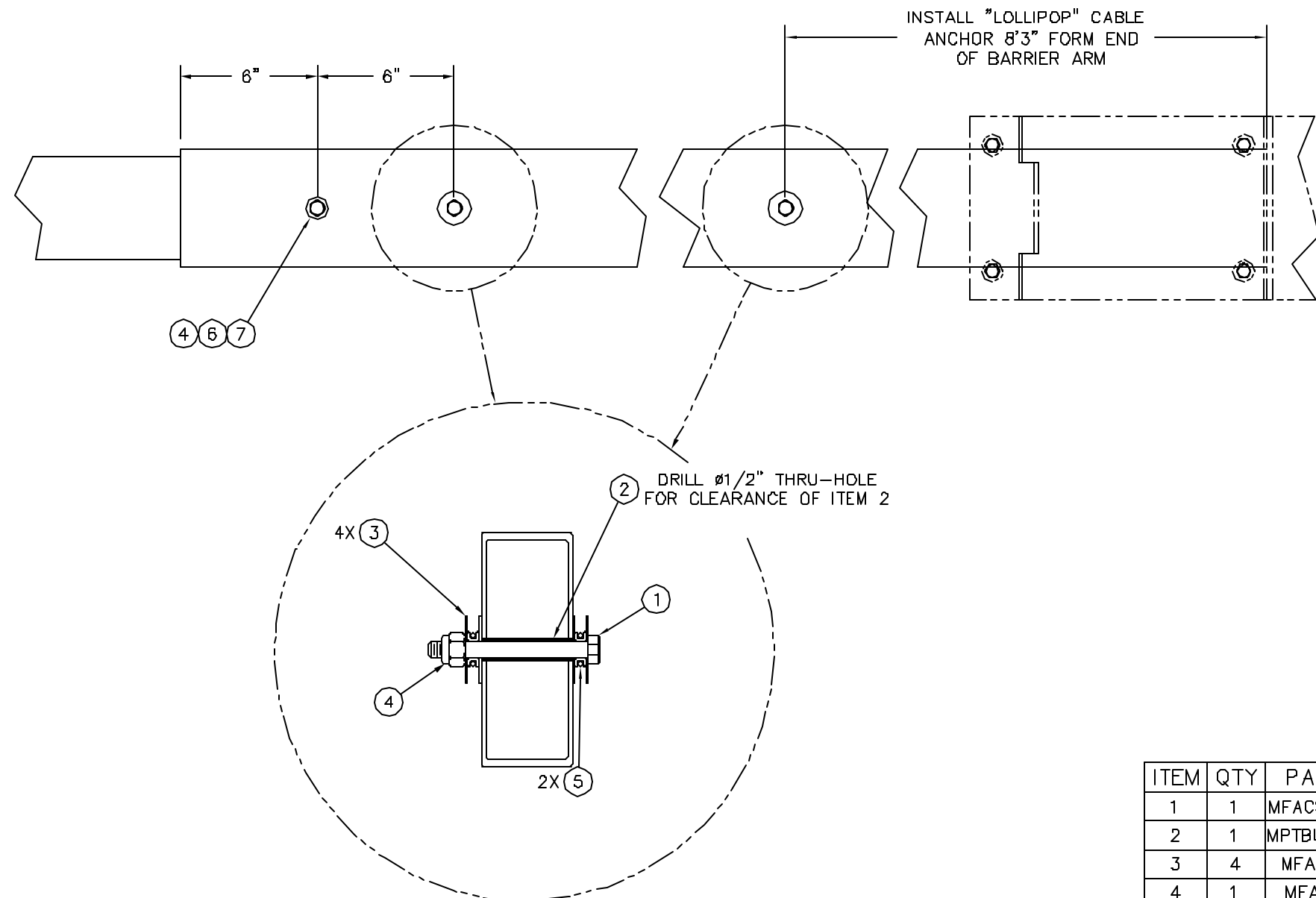
Discontinued Product

MAS 90

N/A  
TITLE

STANDARD BARRIER ARM CONFIGURATIONS

| DRAWN    | DATE    | THIRD ANGLE PROJECTION | REV    |
|----------|---------|------------------------|--------|
| STEVO    | 3/18/02 |                        | C      |
| CHECKED  | DATE    | PART NUMBER            |        |
|          |         | N/A                    |        |
| APPROVED | DATE    | DRAWING NUMBER:        | SHT OF |
|          |         | T20000069              | 2 6    |



| ITEM | QTY | PART NO.      | DESCRIPTION                                     |
|------|-----|---------------|---|
| 1    | 1   | MFACS 006 056 | CAP SCREW, 3/8 X 3-1/2LG                        |
| 2    | 1   | MPTBU 007 032 | BUSHING, 1-7/16, 0-1/2, L-2.00" STAINLESS STEEL |
| 3    | 4   | MFAFS 006     | WASHER, STAINLESS, FENDER, 3/8                  |
| 4    | 1   | MFAHN 006     | NUT, NYLOCK, HEX, 3/8                           |
| 5    | REF | --            | CABLE AND THIMBLE                               |
| 6    | REF | MFAWA 006     | WASHER, SAE, 3/8 FLAT ZINC                      |
| 7    | REF | MFACS 006 040 | CAP SCREW, 3/8 X 2-1/2                          |

UNLESS OTHERWISE SPECIFIED  
TOLERANCES ON DIMS ARE DECIMAL

2 PLS (0.XX) = ±.02  
3 PLS (0.XXX) = ±.005  
ANGLES = ±0.5°

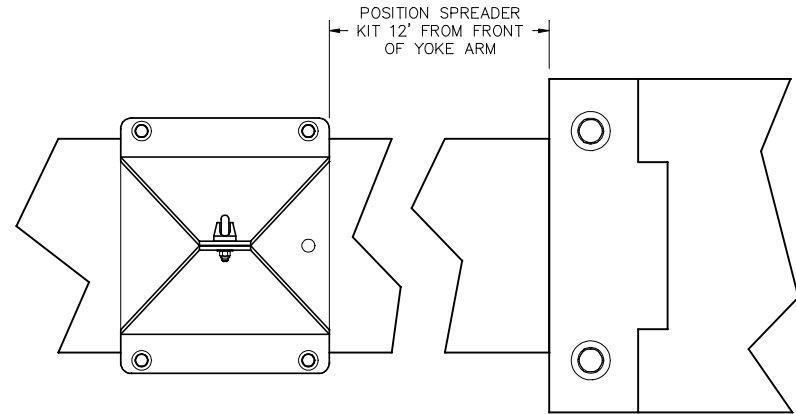
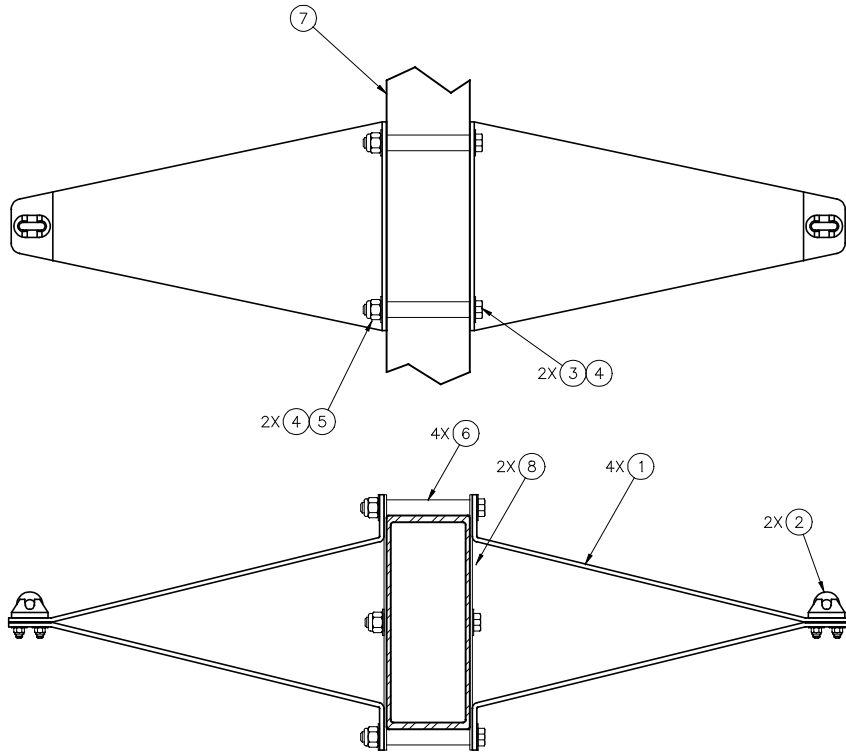
COPYRIGHT © 2001 HY-SECURITY GATE, INC.  
THIS DOCUMENT CONTAINS CONFIDENTIAL & TRADE SECRET  
INFORMATION. BY ACCEPTING THIS DOCUMENT THE RECEIVER  
AGREES THAT, UNLESS AUTHORIZED IN WRITING BY  
HY-SECURITY GATE, INC. IT WILL NOT DISCLOSE TO  
THIRD PARTIES EITHER THIS DOCUMENT OR THE TRADE SECRET  
INFORMATION CONTAINED HEREIN, AND WILL UPON DEMAND  
RETURN THIS DOCUMENT, ALL COPIES THEREOF, AND ALL  
MATERIAL COPIED THEREFROM.



MAS 90  
HTG CABLE ANCHOR KIT  
TITLE  
HTG CABLE ANCHOR KIT

|   |                |                 |                             |               |
|---|----------------|-----------------|-----------------------------|---------------|
| B | DRAWN<br>STEVO | DATE<br>2/26/02 | THIRD ANGLE PROJECTION<br>  | REV<br>---    |
|   | CHECKED        | DATE            | PART NUMBER<br>MTCCK 002    |               |
|   | APPROVED       | DATE            | DRAWING NUMBER:<br>T2000074 | SHT OF<br>1 1 |

| REV | DESCRIPTION                  | DATE    | APR     |
|-----|------------------------------|---------|---------|
| --  | INIT. RELEASE PER ERN0000334 | 2/22/02 | STEVO   |
| A   | ADD ITEM 8                   | 6/19/03 | T.STONE |



DRILL THRU BEAM 1 PLACE AS SHOWN  
LEAVE CENTER BOLT SNUG (NOT TOO TIGHT)

| ITEM | QTY | PART NO.        | DESCRIPTION                    |
|------|-----|-----------------|--------------------------------|
| 1    | 4   | MTBMT 004 BR    | HTG CABLE SPREADER             |
| 2    | 2   | MFACC 002       | CABLE CLAMPS, 1/8 U-BOLT STYLE |
| 3    | 5   | MFACS 004 044   | HHCS, 1/4 X 2-3/4 GR5 PLTD     |
| 4    | 10  | MFAWA 004       | WASHER, SAE 1/4                |
| 5    | 5   | MFAHN 004       | NUT, NYLOCK, HEX, 1/4-20       |
| 6    | 4   | MPTBU 005 032SS | BUSHING, 1-5/16, 0-3/8, L-2.00 |
| 7    | REF | AMITB 024 A     | BARRIER, ALUMINUM, 24'         |
| 8    | 2   | MTBMT 004 BRP   | SPREADER ARM PLATE             |

UNLESS OTHERWISE SPECIFIED  
TOLERANCES ON DIMS ARE DECIMAL  
2 PLS (0.XXX) = ±.02  
3 PLS (0.XXX) = ±.005  
ANGLES = ±0.5°

COPYRIGHT © 2001 HY-SECURITY GATE, INC.  
THIS DOCUMENT CONTAINS CONFIDENTIAL & TRADE SECRET  
INFORMATION. BY ACCEPTING THIS DOCUMENT THE RECEIVER  
AGREES THAT, UNLESS AUTHORIZED IN WRITING BY  
HY-SECURITY GATE, INC. IT WILL NOT DISCLOSE TO  
THIRD PARTIES EITHER THIS DOCUMENT OR THE TRADE SECRET  
INFORMATION CONTAINED HEREIN, AND WILL UPON DEMAND  
RETURN THIS DOCUMENT, ALL COPIES THEREOF, AND ALL  
MATERIAL DERIVED THEREFROM.



MAS 90

HTG CABLE SPREADER ASS'Y KIT  
TITLE  
HTG CABLE SPREADER ASS'Y

B

|                |                 |                             |            |
|----------------|-----------------|-----------------------------|------------|
| DRAWN<br>STEVO | DATE<br>2/21/02 | THIRD ANGLE PROJECTION      | REV<br>A   |
| CHECKED        | DATE            | PART NUMBER<br>MTCSK 001    | SHT 1 OF 1 |
| APPROVED       | DATE            | DRAWING NUMBER:<br>T2000073 |            |