

Fire and Emergency Access Lock Box

The Fire and Emergency Access Lock Box provides a manual release mechanism for the gate and a micro switch that can be wired to the Smart Touch Controller inside the SlideDriver™ gate operator for Fire Department OPEN functionality.

Tools required

- Phillips-head screwdriver
- Standard hex key set
- Standard socket wrench set
- Standard socket set
- Needle nose pliers with wire cutter



Turn OFF power to the SlideDriver and take the necessary precautions to avoid electrical shock.

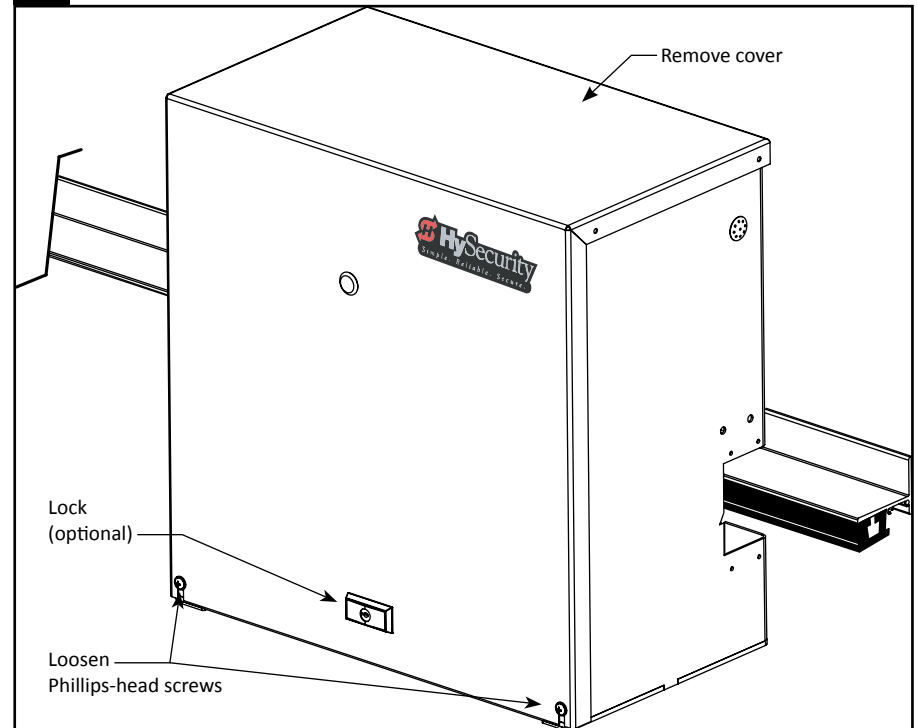
1 Open the SlideDriver™ and Position Gate.

NOTE: *Unlock the cover, if necessary.*

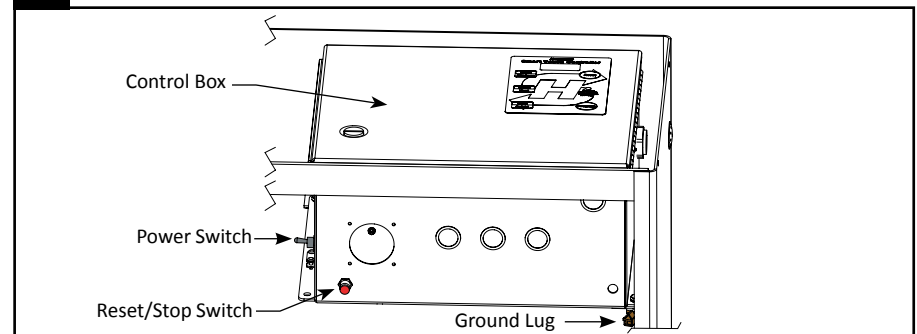
1. Loosen the two Phillips-head screws at the base of the cover.
2. Lift the cover off the gate operator and set it aside.
3. Determine if the gate needs to be open for vehicular traffic. If it does, press the Open button on the keypad to open the gate.

2 Turn OFF power at the Control Box.

1 Open SlideDriver™ and Position Gate



2 Turn off Power



CAUTION

Do NOT grip the toggle handle when releasing the drive wheels inside the chassis! The spring produces a force of about 1800 psi onto the drive wheels. Take the necessary precautions and be careful as the mechanism is spring-loaded and drops rapidly. Keep your hands and fingers above the handle. Slight downward pressure on the toggle handle causes the handle to drop rapidly. Keep your fingers, hands and tools clear of the area when the toggle handle deploys.

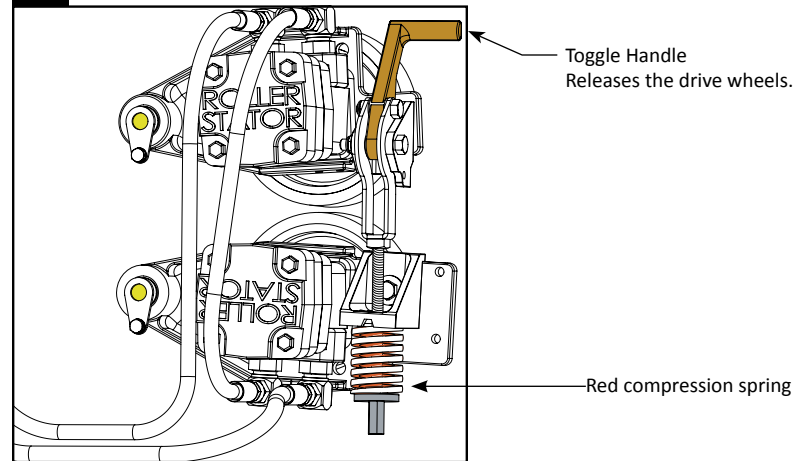
3 Release the Drive Wheels.

1. Read the CAUTION note above.
2. Release the drive wheels using the Toggle Handle.

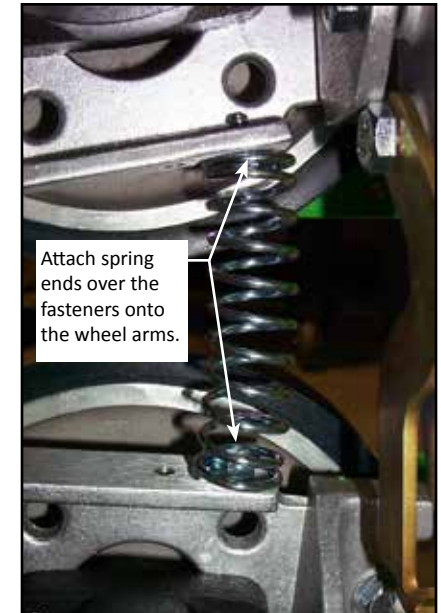
4 Install the drive wheel compression springs.

1. Place a lock washer on each of the two ¼ x 20 x ½ inch bolts provided in the kit and insert them into the outer holes on the top and bottom wheel mounts.
2. Attach the ends of the compression spring over the bolts and onto the wheel arms. See photographs.

3 Release Drive Wheels



4 Install drive wheel compression spring



5 Install bracket assembly.

1. To attach the actuator bracket assembly to the wheel clamp, remove the lock nut using $\frac{3}{16}$ -inch wrenches, but leave the pivot bolt in place.
2. Place the bracket assembly against the clamp with the pivot bolt extending through the large hole in the bracket. Reinstall the lock nut on the pivot bolt.
3. Place the lock washer on the $\frac{1}{4}$ - 20 x $\frac{1}{2}$ inch bolt and insert it through the lower hole in the bracket and into the wheel clamp.
4. Re-engage the drive wheels by pushing the toggle handle up. Make sure the compression spring is properly placed.



Follow local codes and regulations regarding placement of the Fire and Emergency Access Lock Box. Make sure the mounting location is, at minimum, 6 feet (183 cm) away from the gate.

6 Mount the Fire and Emergency Access Lock Box

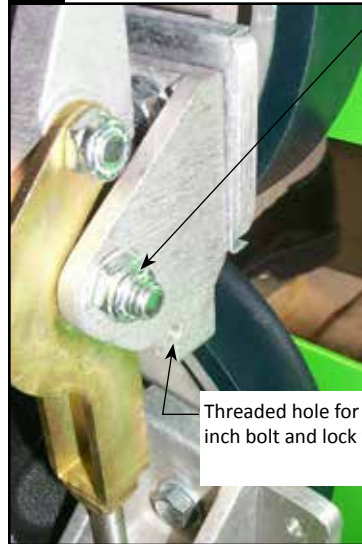
1. Read the CAUTION note above.
2. Mount the box in an appropriate location using the four hex head bolts washers and lock nuts provided.
3. Use $\frac{1}{2}$ -inch box end and socket wrenches to tighten the fasteners securely.

7 Measure and Cut Cable Jacket to Length.

1. Cut the black cable jacket to length and feed it through conduit into the base of the SlideDriver.
2. Feed the other end of the cable jacket through the Lock Box.
3. Place the brake ferrule onto the jacket, insert it into the brake cable anchor and tighten the nut securely.

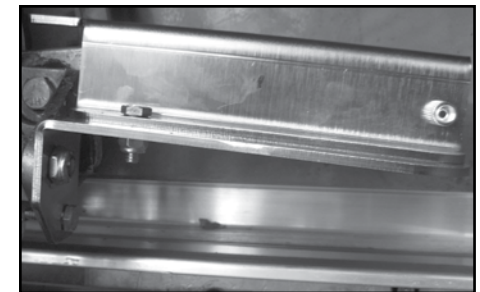
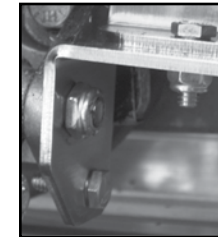
continued...

5 Install bracket assembly

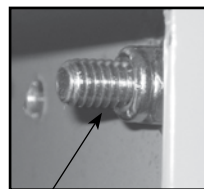


Threaded hole for $\frac{1}{4}$ - 20 x $\frac{1}{2}$ inch bolt and lock washer.

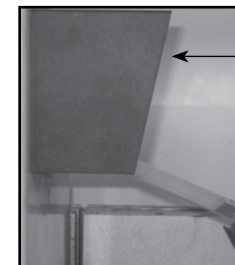
Remove the lock nut, but leave the pivot bolt in place.



6 Mount the Lock Box

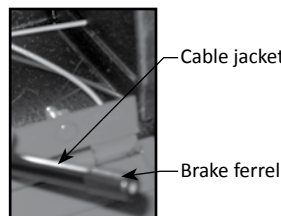


Mounting bolt



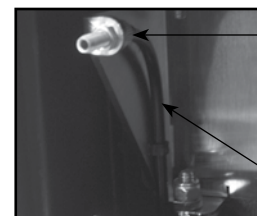
Lock Box

7 Measure and Cut Cable Jacket to Length



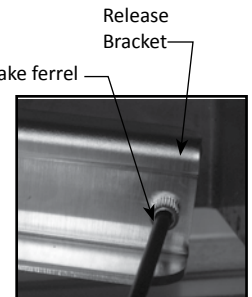
Cable jacket

Brake ferrule



Brake cable anchor

Cable jacket



Release Bracket

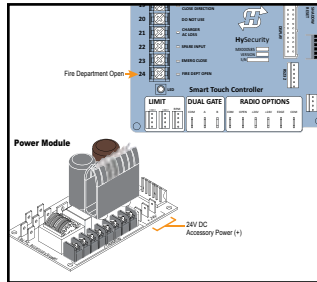
Brake ferrule

8 Measure and Cut Cable to Length. Feed through Cable Jacket.

1. Using a wire cutter, cut the cable so that a 2-inches of the cable remains exposed at the handle and 3-inches of the cable extends past the jacket.
2. Feed the cable end through the cable jacket.
3. Place a brake ferrule onto the end of the cable jacket and feed the cable through the bracket's cable and brake stop. Provide, at minimum, a 1-inch cable allowance beyond brake stop.
4. Use a 5/16-inch socket wrench to tighten the nut and secure the cable.

9 Connect to Smart Touch Controller. (Optional step)

1. Review the wiring label on the door of the Lock Box.
2. Feed the wire through conduit and attach wiring connections to the STC Emergency Open and 24+ inputs.



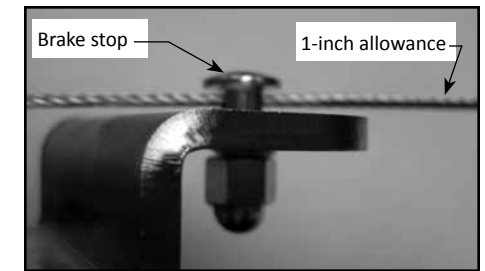
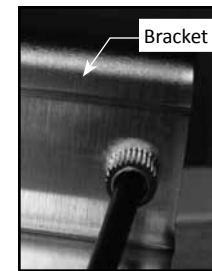
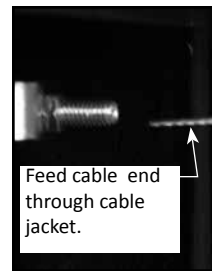
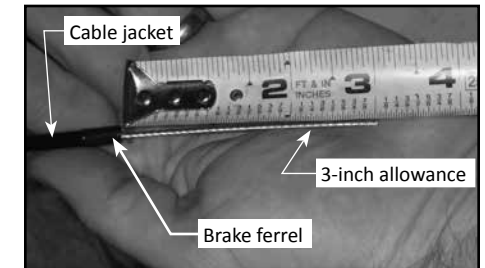
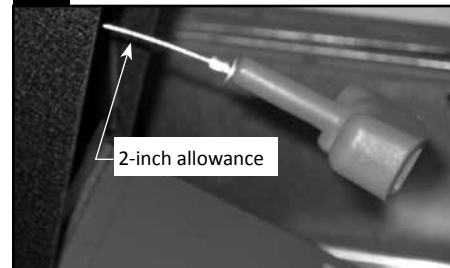
10 Check the red compression spring and re-adjust, if necessary.

1. Measure the compression spring. When clamped, it should be 2-inches (5 cm) in height.
2. To expand or contract the length of the compression spring. Use a wrench to turn the adjusting nut at the base of the spring.
3. Turn on power at the Control Box.

11 Test the System.

1. Close the gate and test the cable release mechanism and micro switch, if it is connected.
2. Reset the Toggle Handle and re-seat the red handle in the Lock Box.
3. Replace the SlideDriver chassis cover.

8 Measure and Cut Cable to Length. Feed through Cable Jacket.



10 Adjust Compression Spring and Test System Operation

