



a company of TheNiceGroup

TECHNICAL BULLETIN

Software Release (h.4.56, h.5.57, v.3.03)

Date: 05/01/2018

Operators Affected: All operators. More info, click: [Technical Support](#).

Issue/Action: The latest software release for HySecurity gate operators is now available. Login or register and download code you need from the, [HySecurity website](#):

- h4.56 for Smart Touch Controllers (STC) hydraulic operators
- h5.57 for Smart DC Controllers (SDC) electro-mechanical
- v3.03 for S.T.A.R.T.

LATEST UPDATES

- **New S.T.A.R.T Release** - Supports new SlideSmart HD models, and a new S.T.A.R.T. cable drivers for easier download and installation.
- **SDC: New Operator Type** - Now supports SlideSmart HD models with operator type OT17.
- **SDC: Improved Battery Performance** - For SmartDC operators, improved charging software lowers stress on batteries and prolongs battery life.
- **SDC: Continues to operate with defective batteries** - Non-solar SDC gate operators, except for WedgeSmart, will continue to run on AC power even if the batteries are dead or missing. Alert 28 (disconnected battery) replaces Error 9 (disconnected battery)
- **SDC & STC: Improved Sensor Monitoring** - Gate operators maintain power to external entrapment sensors such as photo eyes when AC power is present. This improves sensor performance in cold weather.
- **SDC & STC: Prevent Unsecure Gate Situations** - Slide gate operators now reverse to full close if an edge sensor is tripped when the gate is moving in the open direction. Applies for settings "Edge Open" and "Edge Both". Maintains a secure situation in the event of incidental edge contact or false trip from a wireless edge.
- **SDC & STC: Improved Safety** - Updated behavior of gate when emergency open input command is received.

TECHNICAL SUPPORT

For Technical Support, call your installer or authorized HySecurity distributor. Obtain the serial number of your gate operator before calling. For the name of a distributor near you, contact HySecurity at 800-321-9947. For additional information, refer to the, [HySecurity website](#).

When you access the HySecurity website and log in using your registered email and password and locate the software release by clicking:

[TechSupport Resources](#) --> [Operator Software](#) --> [Current Operator Software Versions](#)

For UL 325 Standard of Safety information about installation of monitored external entrapment protection sensors, click the following link: [UL 325 - 2018 Sensor Cutsheet](#).

INITIAL SETUP

With the v.3.03 S.T.A.R.T. application (available on the HySecurity website) uploaded to your PC laptop, you can choose to set site menu configurations from the comfort of your office. Then, simply bring your PC laptop to the gate operator site, connect to the gate operator using serial or USB communications cable, and download the configured menu settings file from your laptop to the specific gate operator.

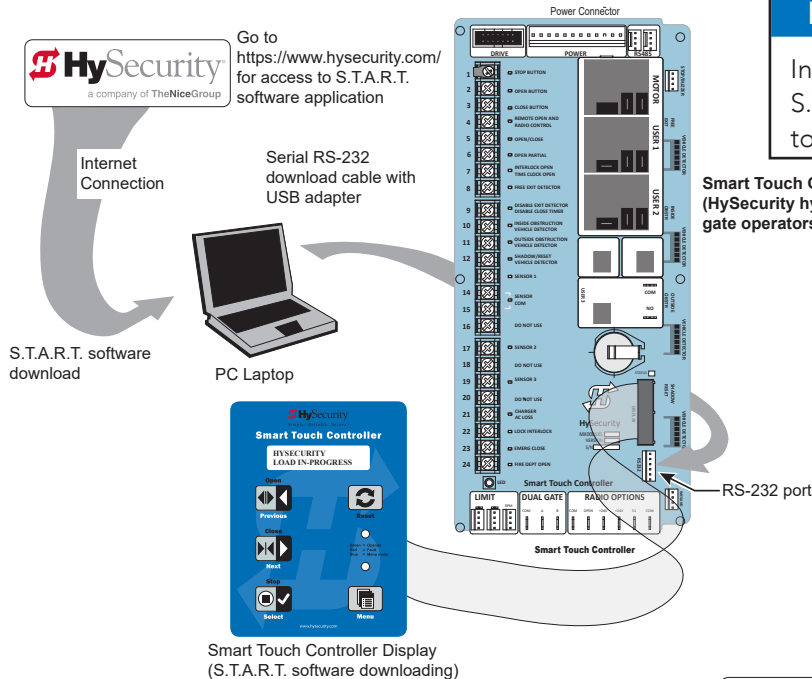
Multiple operators can be configured in this way. No switches need to be set.

All the components are securely placed in a Control Box inside the chassis.



NOTICE

Internet connection is only required for acquiring S.T.A.R.T. software. Internet connection is not needed to run and use S.T.A.R.T. software.



SMART DC CONTROLLER (HYSECURITY ELECTRO-MECHANICAL GATE OPERATORS)

The Smart DC Controller (SDC) is the brain of HySecurity's electro-mechanical gate operators and uses the same innovative software and hardware technology as the STC. The Smart DC Controller maintains similar menu settings and the same reliable, easy-to-use equipment.

NOTICE

Internet connection is only required for acquiring S.T.A.R.T. software. Internet connection is not needed to run and use S.T.A.R.T. software.

