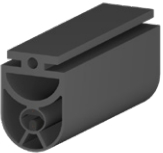


# Give Yourself an **EDGE**



High profile channel mount



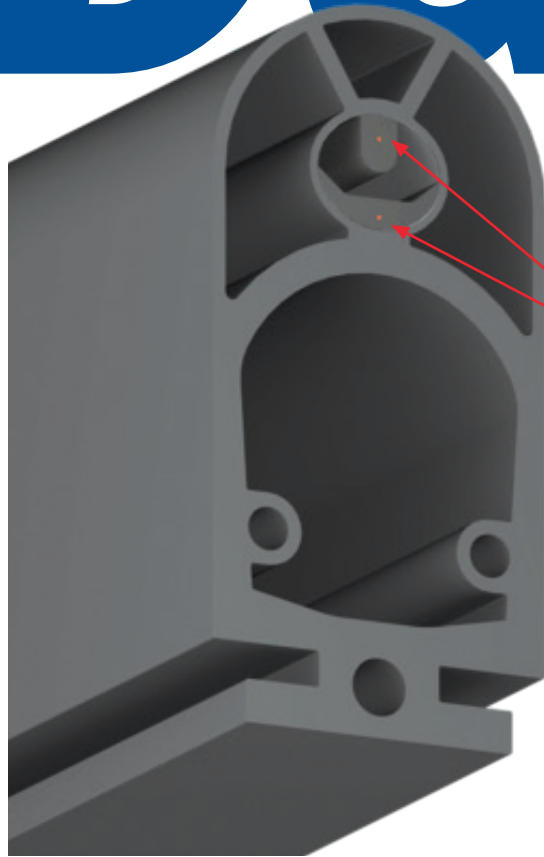
Low profile channel mount



Round wraparound



Square wraparound



## Simple, reliable design

- Robust design not damaged by cuts because sensing contacts are sealed in an inner chamber
- No moisture absorbing foam - prevents failure of monitoring system
- Rugged. Survives manhandling during shipment and install

## An ASO Edge

**Finally, eliminate failures.** Edge failures cost installer warranty callbacks and frustrate end users. Since January 2016, when the updated UL 325 safety standard mandated monitored safety devices, a failing edge stops the gate until an installer is called to troubleshoot the problem. That cuts into installer profits. ASO responded with **an edge you can rely on.**



hysecurity.com | 800-321-9947

Manufacturer of rural/ranch, residential, commercial and parking gate operators and accessories.

# Order ultra-reliable ASO edges from your Nice | HySecurity distributor today!



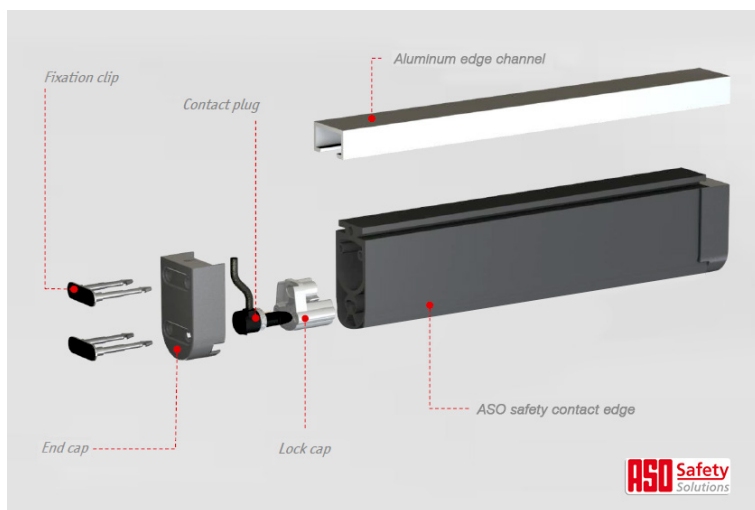
## Give yourself **THE EDGE**

**An ASO edge.** These highly engineered, simple and rugged edge sensors give installers and their customers peace of mind. They're incredibly easy to install, withstand typical rough shipment and installation handling, don't short due to water absorption, and they keep performing under the most severe climate and site conditions.

## ASO EDGES

Order these simple and ultra-reliable devices from your Nice | HySecurity distributor.

Part #	Description
AS1502-0430-05	<b>Low profile channel mount</b> ASO edge sensor, preassembled with two end caps and aluminum mounting channel, 5 ft, 1 x 1.25 inch (1.5 m, 25 x 30mm)
AS1502-0440-05	<b>High profile channel mount</b> ASO edge sensor, preassembled with two end caps and aluminum mounting channel, 5 ft, 1 x 1.75 inch (1.5 m, 25 x 45mm)
AS1501-0760	<b>Round</b> ASO wraparound edge sensor, with three contact surfaces, 5 ft x 2 inch (1.5 m x 51 mm)
AS1501-0790	<b>Square</b> ASO wraparound edge sensor, with three contact surfaces, 5 ft x 2 inch (1.5 m x 51 mm)
AS1804-1620	<b>Replacement end cap</b> for low profile ASO edge sensor, with 10k resistive termination, 1 x 1.25 inch
AS1804-0640	<b>Replacement end cap</b> for low profile ASO edge sensor, with wire leads, 1 x 1.25 inch
AS1804-1630	<b>Replacement end cap</b> for high profile ASO edge sensor, with 10k resistive termination, 1 x 1.75 inch
AS1804-0650	<b>Replacement end cap</b> for high profile ASO edge sensor, with wire leads, 1 x 1.75 inch
AS103200-05	<b>Replacement edge channel</b> , mounts low and high profile edge sensors, 5 ft
AS103200-10	<b>Replacement edge channel</b> , mounts low and high profile edge sensors, 10 ft



ASO safety contact high profile edge and end cap diagram

**Simpler is better.**  
See how at [hysec.us/asowebinar](http://hysec.us/asowebinar)

**SYSTEM DESIGN SUPPORT:** Contact Nice | HySecurity for help with custom site requirements, CAD drawings, tech manuals or other specifications support.

**VISIT HYSECURITY.COM** for installation manuals, parts diagrams, wiring diagrams, specifications, image gallery, videos, training and much more.



Contact Nice | HySecurity for an operator/parts distributor near you.  
phone 253-867-3700 | 800-321-9947  
[hysecurity.com](http://hysecurity.com) | [sales@hysecurity.com](mailto:sales@hysecurity.com)