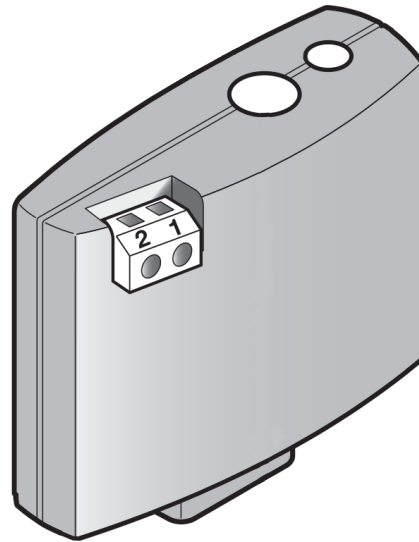


OXI-Mega Receiver



Radio receiver/accessory for gates and commercial doors

Quick Start Guide

Nice

Remote Controls

This receiver is designed to work with all Nice and Linear MegaCode® transmitters. Typically, one transmitter is included with Gate and Garage Door operators. Additional transmitters may be purchased as needed.

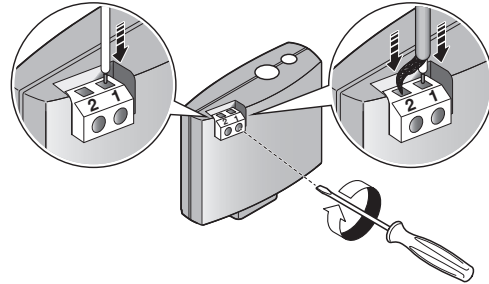
⚠ WARNING ⚠

Children operating or playing with a gate or door operator can injure themselves or others. The gate or door could cause serious injury or death. Do not allow children to operate the remote control(s) or the gate or door operator accessories. A moving gate or door could injure or kill someone. Activate the operator only when the gate or door is clearly visible, free of obstructions and adjusted properly.

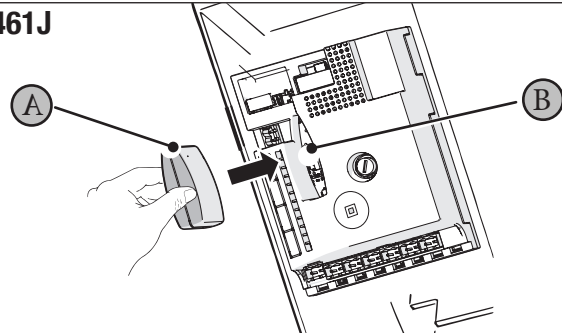
NOTE: The OXIMGC/A receiver can be identified by its blue color. Nice also sells other OXI receivers with a variety of colored enclosures.

To install OXIMGC/A radio receiver (sold separately):

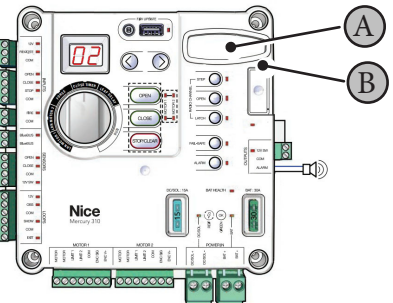
- 1) Connect the antenna supplied to Terminal 1 of the receiver, as shown. Alternatively, if the radio signal reception must be improved through the installation of an external antenna with a coaxial cable with 50Ω impedance (type RG58), the coaxial cable must be connected directly to terminals 1 and 2 of the receiver.



PRO-1461J

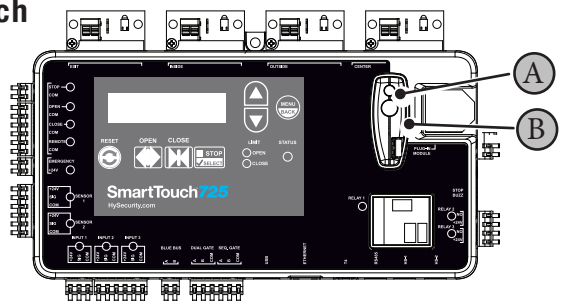


Mercury 310

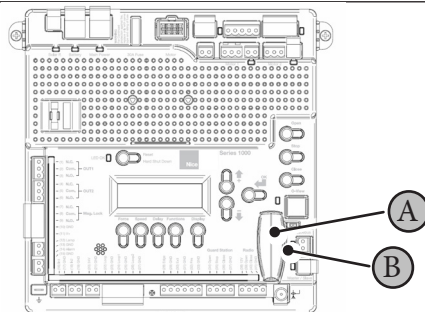


- 2) Insert the receiver (A) in the appropriate slot (B) on the control unit's electronic board.

SmartTouch 725



1050US



Programming the Transmitters

This page is only applicable to the 1461J and PRO-1461J Door Operators.

NOTE: To program additional features on the Mercury 310, SmartTouch 725, or the 1050US control boards, refer to the operator manual for that specific model.

To Add or Remove a Remote or Optional Keypad

- 1) Hold the Program button for 1 second. The LED will flash red once and turn on for approximately 15 seconds. **A remote button or keypad 1-6 digit code must be added while the red light is on.**

NOTE: If the Red LED is not illuminated when entering the code, repeat step 1.

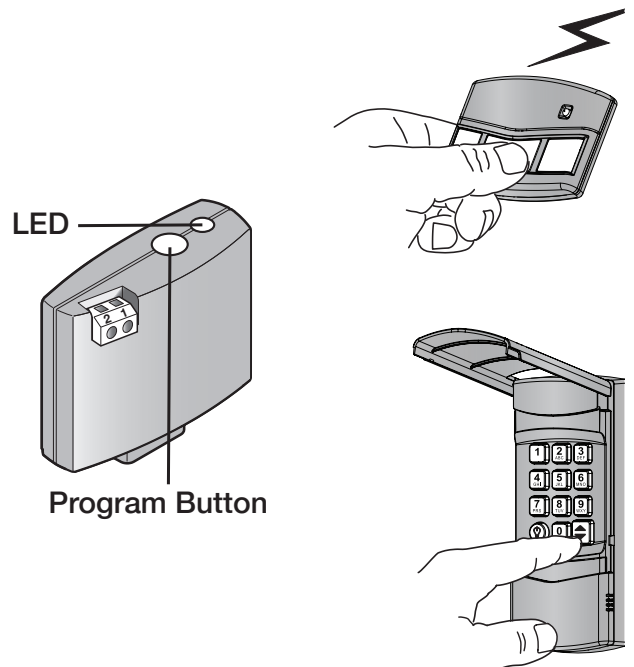
- 2) Press and hold the desired remote button or the keypad's transmitter button (◆). The LED will flash green 4 times. The green light will then turn OFF indicating the pairing process is complete.
- 3) Repeat steps 1 and 2 to add additional transmitters.

Deleting a Transmitter

- 1) Hold the Program button for 1 second. The LED will flash red once and turn on for approximately 15 seconds.
- 2) Press and hold the remote or keypad transmitter button for 10 seconds, then release the button.
- 3) The LED will flash red 3 times indicating the transmitter has been deleted.

Deleting All Transmitters

- 1) Hold the Program button for 10 seconds.
- 2) The LED will flash red 3 times, indicating that all transmitters have been deleted.



Testing

Stand and clear of the door, and press the remote control or keypad button and verify that the operator starts.

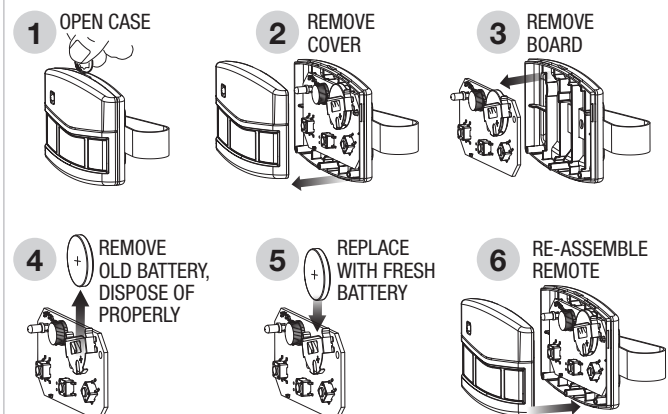
PRESS THE REMOTE CONTROL BUTTON AGAIN TO STOP THE DOOR MID-TRAVEL.



Replacing a Remote Control's Battery

When the BLUE light on the remote glows dimly, or fails to light at all when the remote is activated, the battery needs replacing. Follow the steps in the illustration.

REPLACING REMOTE BATTERY



NOTE: This page only applies to the transmitter, if included. OXIMGC/A does not have a battery.

WARNING

- **INGESTION HAZARD:** This product contains a button cell or coin battery.
- **DEATH** or serious injury can occur if ingested.
- A swallowed button cell or coin battery can cause Internal Chemical Burns in as little as 2 hours.
- **KEEP** new and used batteries **OUT OF REACH OF CHILDREN.**
- Seek immediate medical attention if a battery is suspected to be swallowed or inserted inside any part of the body.



- Remove and immediately recycle or dispose of used batteries according to local regulations and keep away from children.
- Do NOT dispose of batteries in household trash or incinerate.
- Even used batteries may cause severe injury or death.
- Call a local poison control center for treatment information.
- Only use this product with CR2032 type batteries.
- Nominal battery voltage 3Vdc.
- This product uses non-rechargeable batteries and are not to be recharged.
- Do not force discharge, recharge, disassemble, incinerate or heat above specified operational temperature. Doing so may result in injury due to venting, leakage or explosion resulting in chemical burns.
- Ensure the batteries are installed correctly according to polarity (+ and -).
- Do not mix old and new batteries, different brands or types of batteries, such as alkaline, carbon-zinc, or rechargeable batteries.
- Remove and immediately recycle or dispose of batteries from equipment not used for an extended period of time according to local regulations.
- Always completely secure the battery compartment. If the battery compartment does not close securely, stop using the product, remove the batteries, and keep them away from children.

Technical Support:

+1-253-867-3700

Technical Support Hours:

M - F, 0600 - 1600 PST

Nice North America

c/o Customer Service

5919 Sea Otter Place, Suite 100

Carlsbad, CA 92010



Nice

Niceforyou.com