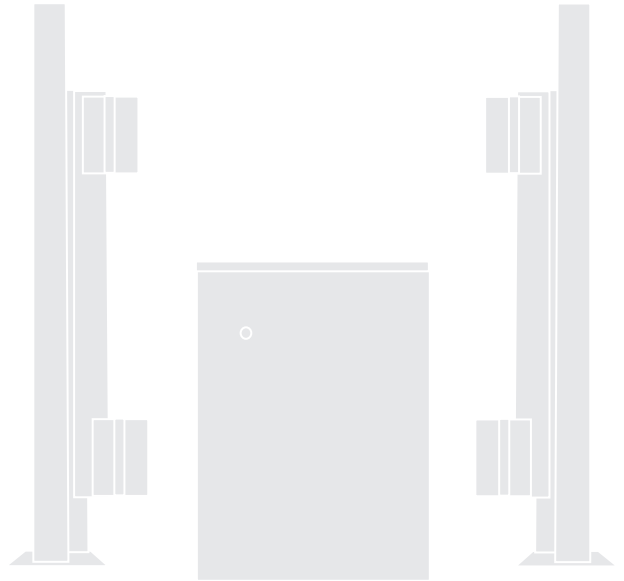


# SwingRiser™

SwingRiser 14  
SwingRiser 14 Twin  
SwingRiser 19  
SwingRiser 19 Twin  
SwingRiser 30  
SwingRiser 30 Twin



## Swing Gate Actuator with SmartTouch 720/725 Controller

Installation Reference Manual

# Table of Contents

<b>SwingRiser Post &amp; HydraSupply Components</b> .....	<b>3</b>	SwingRiser Posts & Gate Site: Overview .....	18
<b>SwingRiser Components</b> .....	<b>4</b>	SwingRiser Single (HRG 220): Installation Reference .....	19
<b>HydraSupply Internal Components</b> .....	<b>5</b>	SwingRiser Twin (HRG 222): Installation Reference .....	20
Mechanical Maintenance .....	6	SwingRiser: Index Arm & Locking Pin Overview .....	21
Operator Post.....	6	SwingRiser: Post Mount Locking Pin Installation.....	22
Re-shimming the Bearings.....	7	SwingRiser: Ground Locking Pin Installation .....	23
Replacing the Bearings .....	8	SwingRiser: Hydrasupply Installation Overview .....	24
SwingRiser Index Arm Assembly .....	10	<b>Appendix A - French Translations</b> .....	<b>25</b>
Hydraulic System Maintenance.....	11	<b>Specifications</b> .....	<b>29</b>
Bleeding Air From SwingRiser Hoses .....	12	<b>Warranty</b> .....	<b>30</b>
SwingRiser Operator Maintenance Schedule .....	13		
<b>SwingRiser Installation Drawings</b> .....	<b>14</b>		
SwingRiser: Gate Swing And Pillar / Post Views.....	14		
SwingRiser Twin: Site Sketch.....	14		
SwingRiser Post: Top Cap Options.....	15		
SwingRiser Post: Components .....	16		
SwingRiser Posts & Installation Reference .....	17		

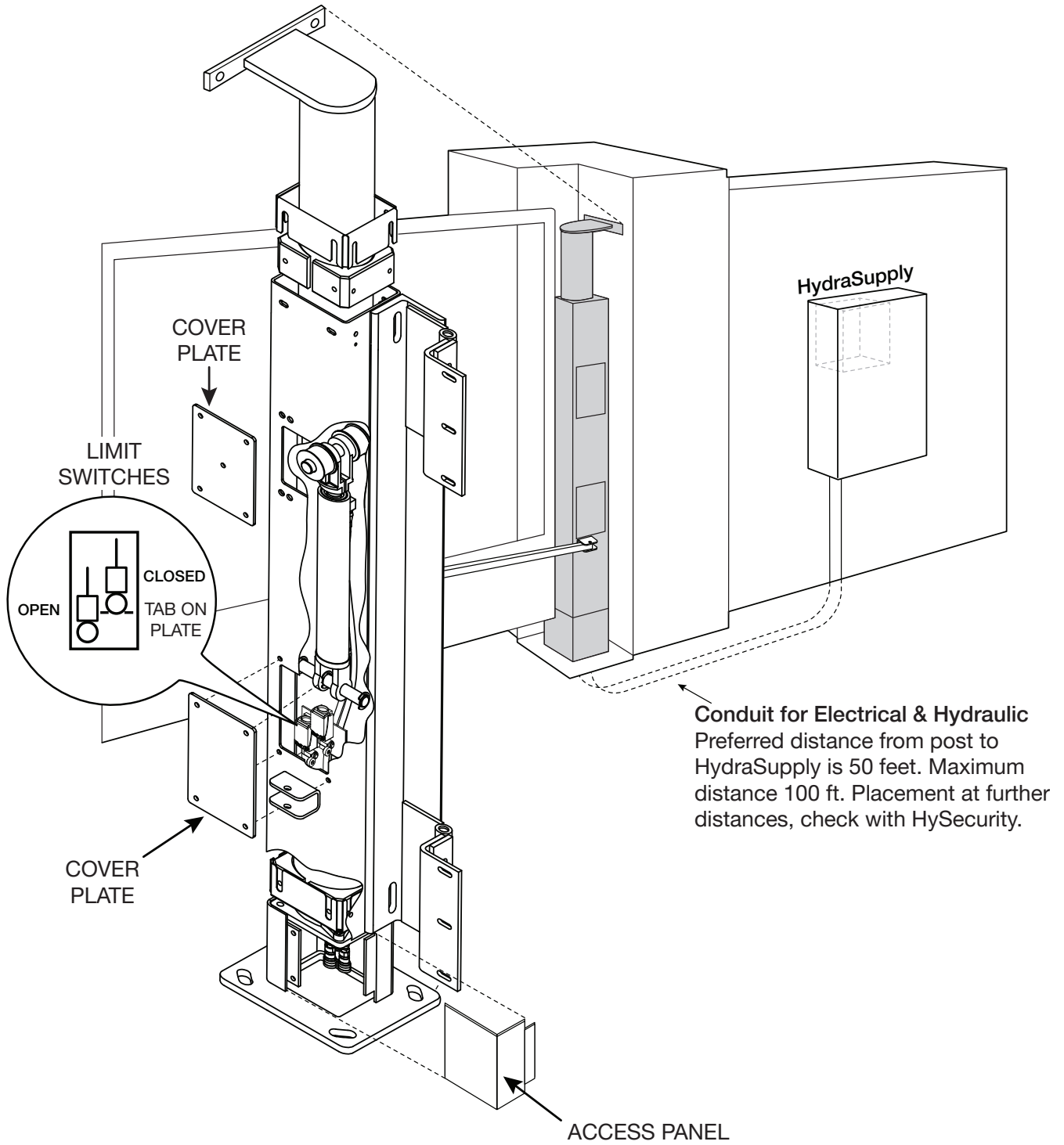
## IMPORTANT DISCLAIMER!

All gate installations using HySecurity vehicular gate operators must comply with UL325 and ASTM F2200 safety standards in addition to any local area codes and standards. Site, gate hardware, usage class, and other conditions will dictate the use of additional safety designs and components. All safety related warnings and notices in this document, and any diagrams, drawings, photographs and similar content should not be considered guidance on how to make your particular site safe and code compliant. It is the responsibility of the gate system designer, installer and owner to assess appropriate safety design considerations, correct implementation and ongoing maintenance of any system.

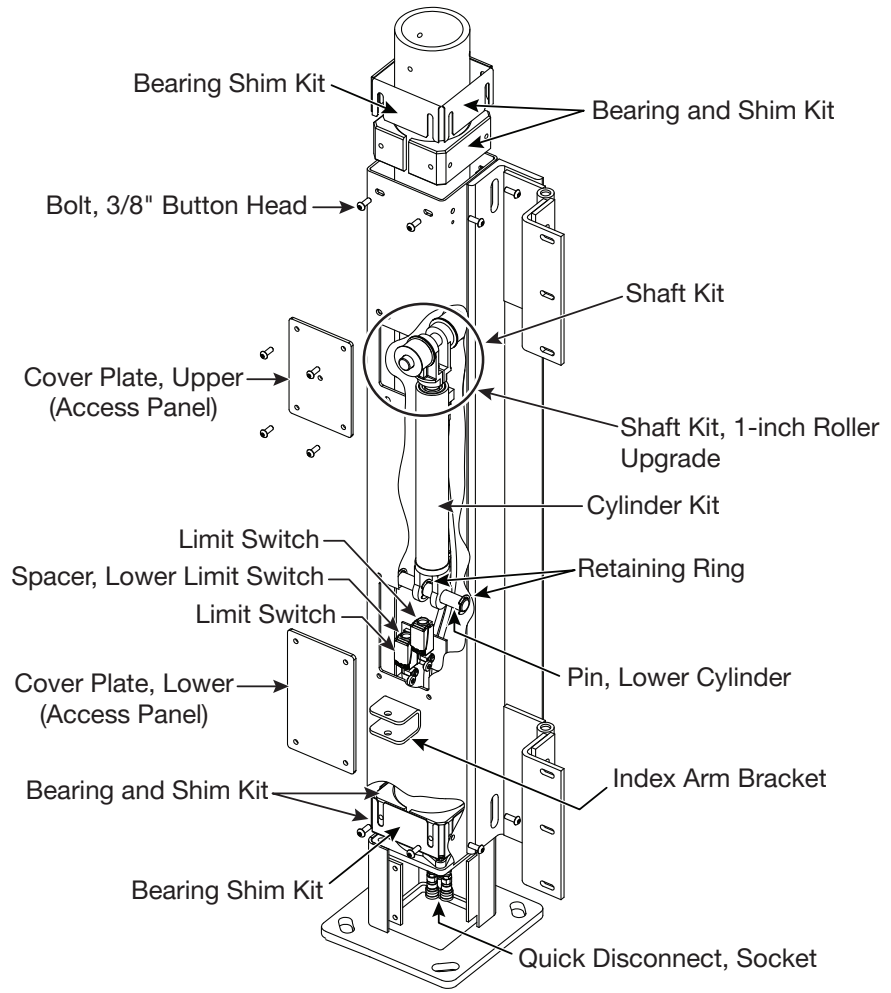
### NOTICE

Visit <https://hysecurity.com> for installation manuals, replacement part instructions, part diagrams, and more.

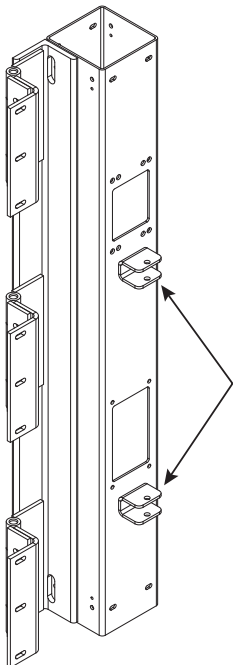
# SwingRiser Post & HydraSupply Components



# SwingRiser Components



**Triple Hinge Post**

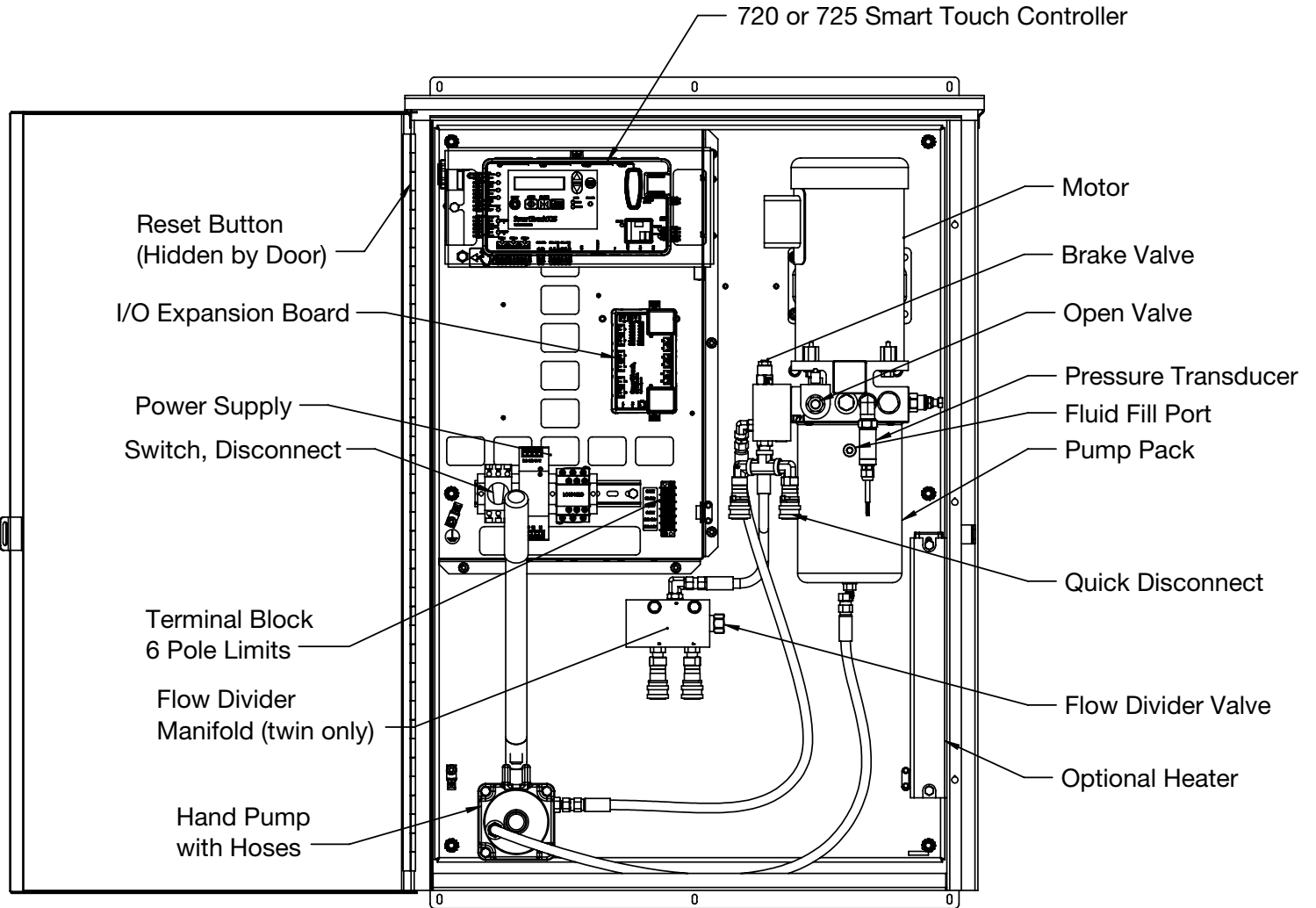


**Quad Hinge Post**



# HydraSupply Internal Components

## HydraSupply II for SwingRiser model SWR14T shown



**NOTE:** Be certain to match the color coding on the Quick Disconnects both at the Flow Control Valves and at the base of the operator post. This is to ensure a correct connection.

## General Maintenance

### Mechanical Maintenance

#### NOTICE

Before checking the internal mechanisms of the operator, turn off all power switches.

The mechanical maintenance for the HySecurity gate operator is not in depth or difficult, but should be performed on a routine basis.

#### Schedule regular maintenance:

- Check for signs of rust. The operator chassis is zinc plated which is corrosion-resistant, but some environments may increase the rate of corrosion. If any areas of rust are found, reduce the spread of corrosion by treating the areas with a rust inhibitor.
- Replace worn-out batteries.
- Maintain gate hardware in good-working order.

### Operator Post

The operator post is the workhorse of the gate. Schedule regular maintenance on operator post to include following:

**Smooth gate operation:** Open and close gate several times. Check for consistent speed and smooth stops. If adjustment is necessary, refer to *Adjusting the Flow Control Valve*, page 145.

**Indexing arm:** To hold gate in correct position, indexing arm may need to be adjusted to align locking pin with its receptacle. Adjustment is usually required only after gate has been hit by a vehicle or otherwise damaged.

To adjust, refer to Mounting the Gate Panel, Index Arm, and Locking Pin Assembly.

Most reliable operation occurs when indexing arm is adjusted to over-extend gate closure. Goal is to have locking pin strike its receptacle firmly. Added pressure in slight over-extension of the gate aids in keeping locking pin aligned in its receptacle.

**UHMW bearings and shims:** Inspect the white UHMW plastic bearings (inside the upper and lower portions of the square post). See the photo in the Cut-away View. The bearings are designed to wear during normal operation and must be inspected at regular intervals and re-shimmed or replaced, as necessary.

- If the gap between the bearing and the inner tube exceeds 1/8-inch (3mm), the bearing needs to be re-shimmed. See *Re-shimming the Bearings*, next page.
- If the bearing is extensively worn and 1/4-inch (6mm) or less of plastic bearing material remains, replace the bearing. Replace both the upper and lower bearings by following the steps in Replacing the Bearings.

#### NOTICE

If you plan to replace the bearings, a replacement part kit must be ordered from HySecurity. The kit includes the upper and lower UHMW bearings and 16 shims.

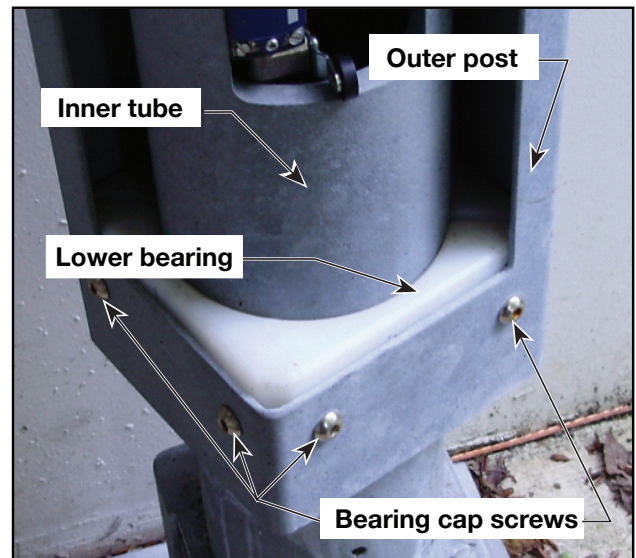


Figure 1. Cut-away View of SwingRiser Post

### Re-shimming the Bearings

To add shims, you need to order the Shim Kit (part# MX002057). It includes four 0.020 and four 0.060 shims.

Important aspects to consider when you are shimming bearings:

- One half of the bearing is usually worn more than the other. Use different shim thicknesses (0.020 or 0.060) to keep the inner tube centered inside the post.
- The weld seam inside the post may prevent the shim from sliding behind the bearing cleanly. If this happens, cut 1 inch out of the middle of a shim and install the two slotted pieces on each side of the weld.

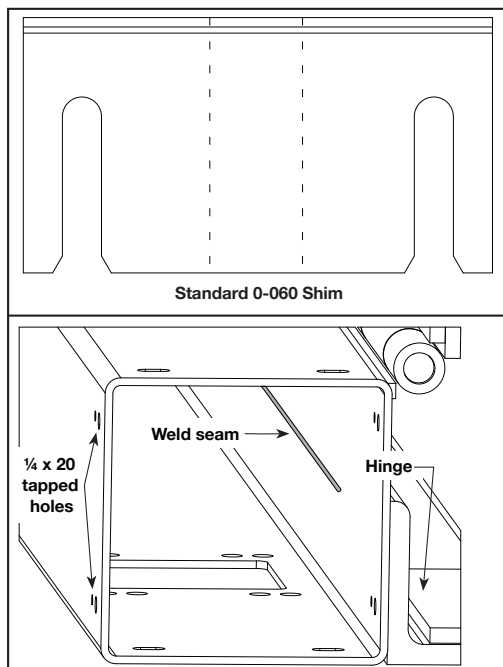


Figure 2. HySecurity Shim Kit

To install shims, take the following steps:

1. To access the upper bearing, close the gate.
  2. Turn off the gate operator's power source. This ensures that the gate will not move while you are installing the shims.
- IMPORTANT:** Measure the thickness of the material remaining in the upper bearing. Be sure to measure the thinnest portion of the bearing. If the thickness is 1/4-inch or less, do not use the shims. Instead, replace both the upper and lower bearings. See Replacing the Bearings.
3. Use a jack screw to lift and block the gate panel. This transfers the weight off the bearings.
  4. Loosen, but do NOT remove the four screws in the outer post that secure the worn portion of the bearing. There are four 1/4-20 tapped holes adjacent to the screws. Bolts (1/4 - 20) may be screwed into these holes to aid in adjusting the gap while shimming.
  5. Make a shim packet with 0.060 and 0.020 shims and close the gap tolerance to under 0.020 of an inch. Use a feeler gauge to measure the gap.

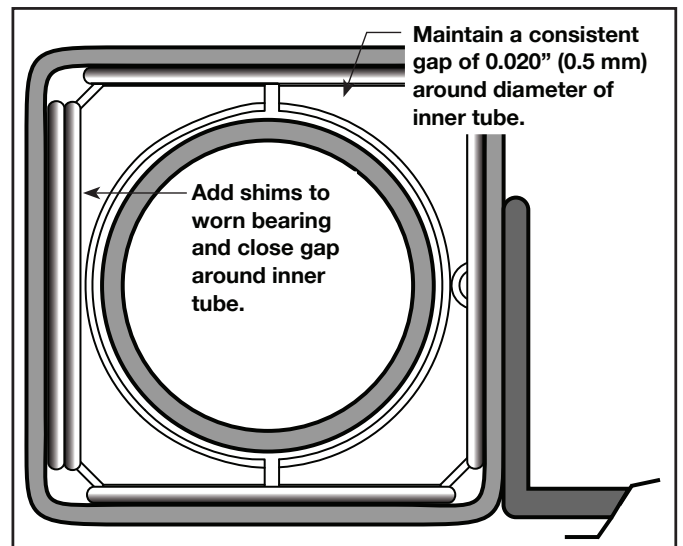


Figure 3. Shim Packet

## General Maintenance

- Force the shim pack into the space between the worn bearing (A) and the square post. If the gap between the inner tube and the bearings (both portions A and B) remains higher than 0.020-inches, loosen the screws that secure portion B and force equal-sized shim packets between bearing (B) and the outer post.

**IMPORTANT:** Keep the bearings centered and maintain a consistent gap around the diameter of the  $\frac{3}{4}$ " (19 mm) inner tube. Another way to measure for consistent gap tolerance is shown in the illustration. If the distance between the outside of the post and the outside diameter of the tube equals  $\frac{3}{4}$ " (19mm) and the bearings are centered, a consistent gap should exist around the inner tube. It is likely that the gap is within the needed 0.020 tolerance.

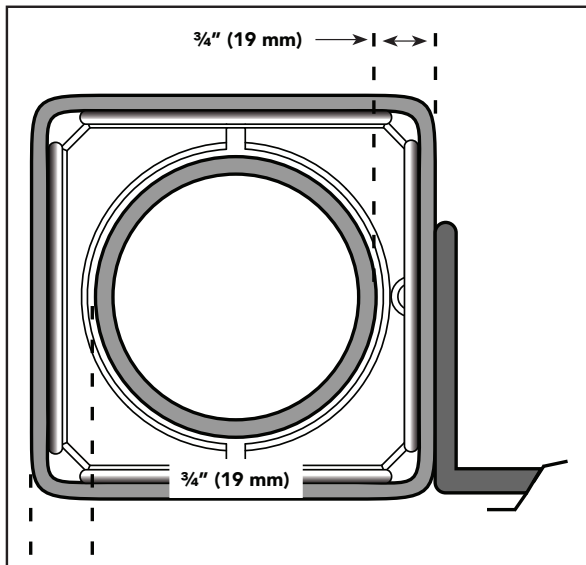


Figure 4. Shim Installation

- Re-tighten the screws to secure the re-shimmed bearings.
- Remove the block from the gate.
- Turn the power back on.

## Replacing the Bearings

To replace the bearings, you need to order the replacement part kit. You may want to order replacement fasteners as well. You will need eight cap screws per bearing.

Part #	Name	Description
MX001718	SwingRiser Bearing and Shim Kit, Upper & Lower	Includes upper and lower post bearings and 16 shims. This kit can be used on operators manufactured from 2/2008 to the present.
MX001089	Nickel-plated cap screws (3/8 x 16 x 1-inch)	Replacement fasteners. If needed, order eight cap screws per bearing.

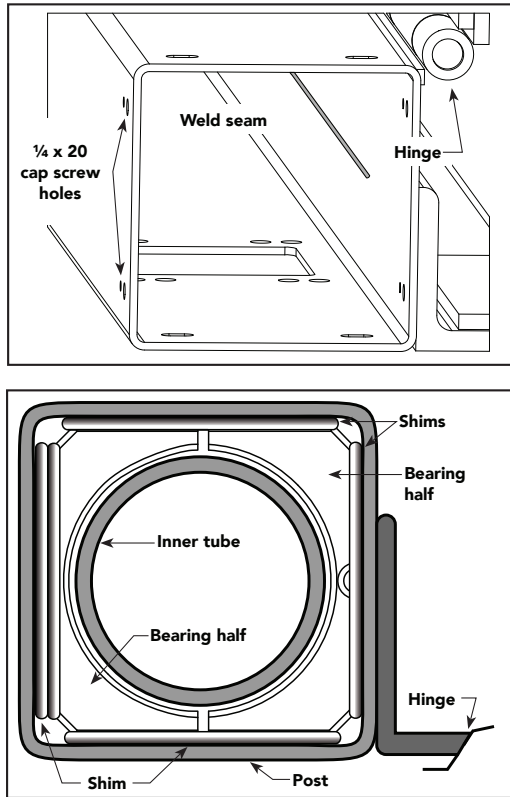
### NOTICE

If you are working on a SwingRiser manufactured prior to January 2008, refer to Technical Bulletin: SwingRiser Maintenance – Bearing Replacement and Shimming.

Important aspects to consider when you are replacing bearings:

- Locate weld seam inside square post. It should run along side that is attached to gate hinges. Notched portion of bearing half must be installed so that notch aligns with weld seam. If weld seam is not evident inside post, place bearing so notch is on hinge side.
- Shims are inserted at factory with 0.0 to 0.020-inch clearance in relation to post. Replacement bearings need to be shimmed to a similar clearance.
- When installing new bearings, use an equal number of shim packets on opposite sides. Packets may be composed of 0.060 and 0.020 shims.
- Always start with a .060" shim on each of the four outside edges when installing a new rectangular bearing.

## General Maintenance



**Figure 5. Bearing Replacement**

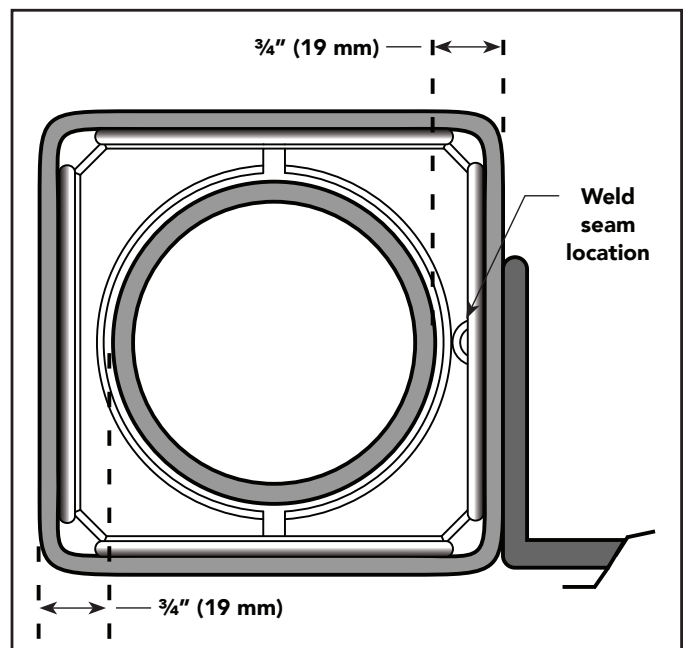
To replace the bearings, take the following steps:

### NOTICE

Refer to SwingRiser Bearings Chart to determine what replacement kit you need to order.

1. To access the upper bearing, close the gate.
2. Turn off the gate operator's power source. This ensures that the gate will not move while you are installing the bearings.
3. Use a jack screw to lift and block the gate panel. This transfers the weight off the bearings.
4. Loosen the post screws and remove any shims surrounding the bearings.
5. Alleviate the possibility of the bearing falling into the post's interior by using two self-tapping screws and some string. Fasten a separate strand to each screw. Turn the screw into each half of the UHMV plastic bearing until each screw is secure.

6. Remove the four screws in the outer post that hold the worn half of the bearing in place. Pull on the string to remove the bearing from inside the post, and then perform the same step for the other half of the bearing.
7. Use the screw and string technique on the two new bearing halves. Make sure the notch in the bearing is aligned with the post's weld seam.
8. Replace both bearing halves and use the fasteners removed in step 6 to hold them in place. Do not fully tighten the fasteners until the shims have been properly installed.
9. Shim each side evenly so the distance between the outside edge of the post and the inner tube is equal to  $\frac{3}{4}$ -inch (19mm). Make sure the bearing halves are centered in the post and the gap surrounding the inner tube is consistent.
10. Remove the block from the gate.
11. Turn the power back on.
12. Open the gate to access the lower bearing.
13. Repeat steps 2 through 11 to replace the lower bearing.



**Figure 6. Replace Bearings Dimensions**

## SwingRiser Index Arm Assembly

Two spacers (5/8-inch nuts) have been added to the SwingRiser index arm assembly. The stabilizing index arm directly affects the cam and its path inside the support post. When the index arm is held securely in its mounting bracket, the outcome increases the longevity of SwingRiser components.

For assembly instruction, review the illustration below and the drawings in the "Figure 73. SwingRiser Twin (HRG 222) Installation Reference" on page 161.

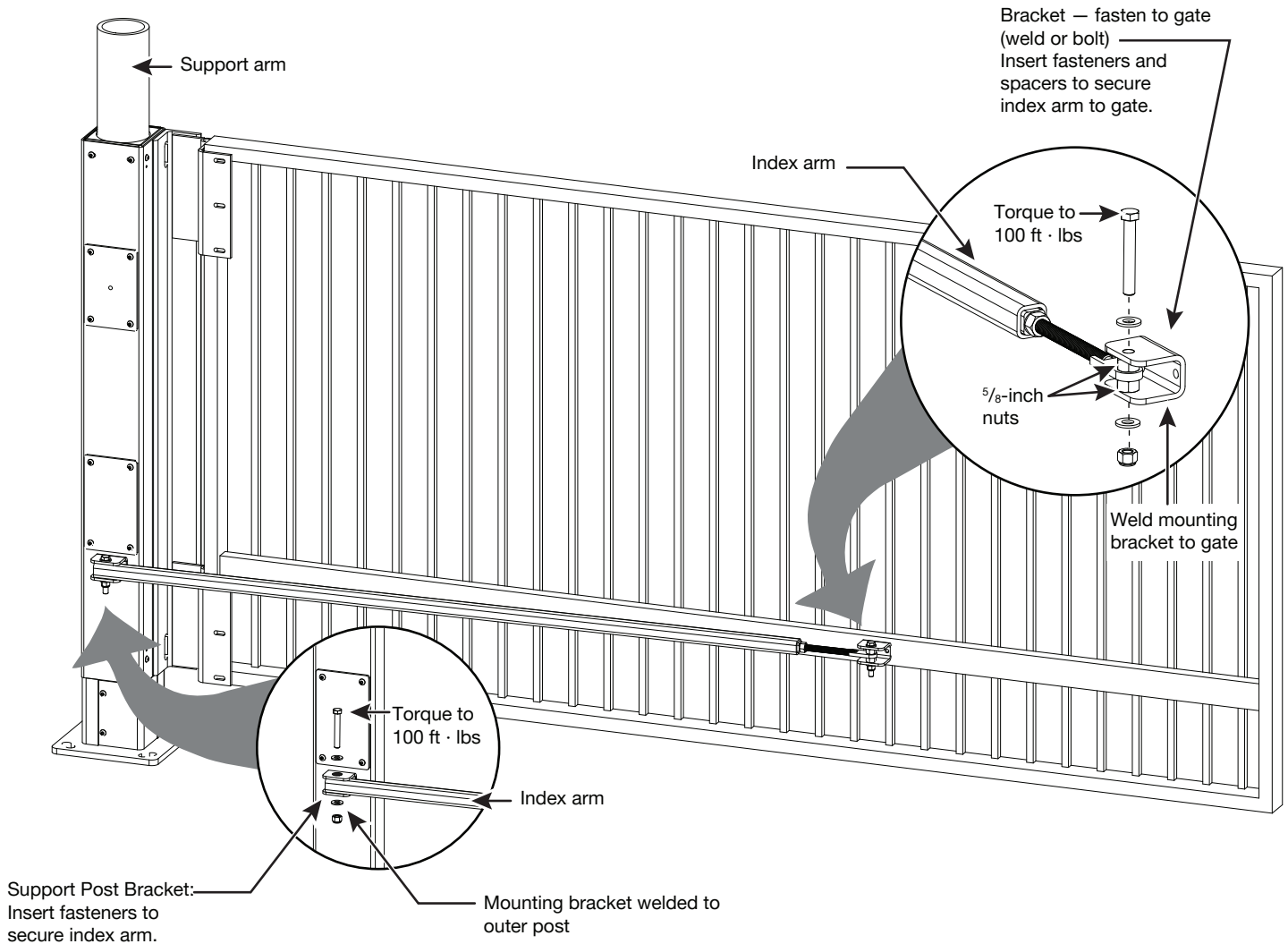


Figure 7. SwingRiser Index Arm Assembly

## General Maintenance

### Hydraulic System Maintenance

**Fluid Level:** Under normal conditions, hydraulic systems do not consume fluid. Check the system thoroughly for leaks, before adding any fluid. If fluid needs to be added:

1. Remove the metal plug from the tank.
2. Use HySecurity Uniflow hydraulic fluid; part number MX000970. Gallon sold by our distributors.
3. Fill to within ½ inch of the plug level, and then replace plug.

#### NOTICE

Never use brake fluid. It will severely damage the hydraulic system. Use of any fluid other than fluid recommended by HySecurity may void the operator warranty.

**Look for leaks:** Occasionally there may be slight seeping at the fittings after some usage. Tightening of the fittings usually corrects the problem. If leaking persists, replace “O” rings, fittings or hoses, if required. No further leaks should occur.

**To Change Fluid:** Unlike a gas engine, the fluid inside a hydraulic system does not foul, so fluid changes do not need to occur often. HySecurity recommends draining the reservoir and replacing the fluid at five-year intervals. Fluid breakdown caused by heat is the main concern. If the unit is subjected to high use, or you are using the HySecurity biodegradable fluid option (especially in a warm climate), change the fluid more frequently.

To change the hydraulic fluid,

1. Remove the reservoir from the pump pack.
2. Completely empty it.
3. Re-assemble the pump unit and refill it with new Uniflow hydraulic fluid.
4. To avoid overfilling, slowly pour the fluid through the filler port near the reservoir’s top until the fluid is within one inch of the port’s opening.
5. Replace the plug and wipe up any spilled fluid. Spilled fluid dries to a sticky and messy consistency.

### Cold Weather Issues

1. Check that your reservoir is filled with our Uniflow high performance fluid.

Excessive ice buildup can partially or totally jam gate operation. Operate the gate manually, while clearing the ice buildup.

If the operator is located in an area of extreme snow conditions, regular maintenance to dig the operator out may be required. A heater option may help.

#### NOTICE

A biodegradable fluid option does exist, but it does not have the same fluid viscosity at extremely low temperatures. Uniflow fluid temperature rating is between -40°F and 158°F (-40°C and 70°C). The biodegradable fluid has a temperature rating between -10°F and 158°F (-23°C and 70°C).

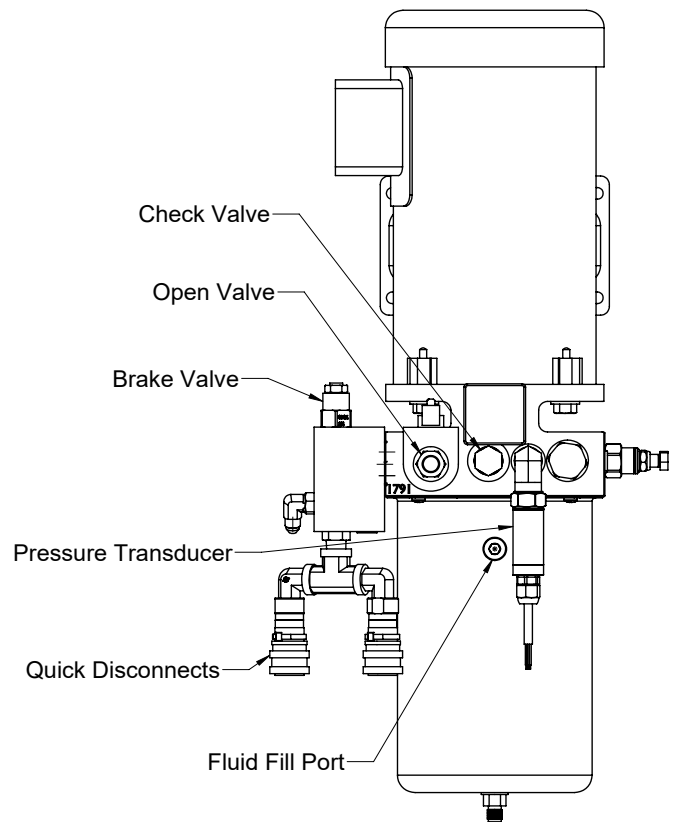
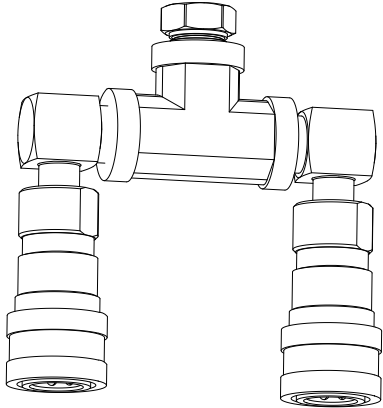


Figure 8. Hydraulic Reservoir

### Bleeding Air From SwingRiser Hoses

Air trapped in the hydraulic systems of SwingRiser (HRG) operators can cause slow and/or jerky operation. In SwingRiser Twin (HRG 222) systems (two gate panels operating from a single hydraulic supply), air can prevent the two panels from synchronizing.



**Figure 9. Air Bleeder Tool**

If these symptoms are appearing in your operator, you may need to bleed the air from the hoses between the hydraulic supply and the operator post.

In SwingRiser Twin systems, both posts must be bled at the same time. The gate will be inoperative during the bleeding process. If traffic needs to pass, remove the index arm and pivot the gate on the mounting hinges manually.

#### Look for leaks

- 7/32" Allen wrench (for cover plate screws)
- Bleeder tool assembly, refer to the HySecurity Price Book for the part number. A single gate requires one Bleeder tool. A twin gate system requires two Bleeder tools.
- Two electrical jumper cables

Detailed instructions on how to use the bleeder tool are shipped with it. You can also find the instructions online by logging into your distributor or installer site and accessing Technical Support Resources, Replacement Part Instructions.

## General Maintenance

### SwingRiser Operator Maintenance Schedule

Part Name	What To Do	Recommended Monthly Check Intervals				
		1	3	6	12	24
Gate and hardware	Check for damage and wear <sup>*1</sup>	X				
Anchor bolts	Check for tightness <sup>*2</sup>			X		
Fluid level	Check for loss fluid <sup>*3</sup>				X	
Biodegradable hydraulic fluid	Change				X	
Clock battery	Replace <sup>*4</sup>					X

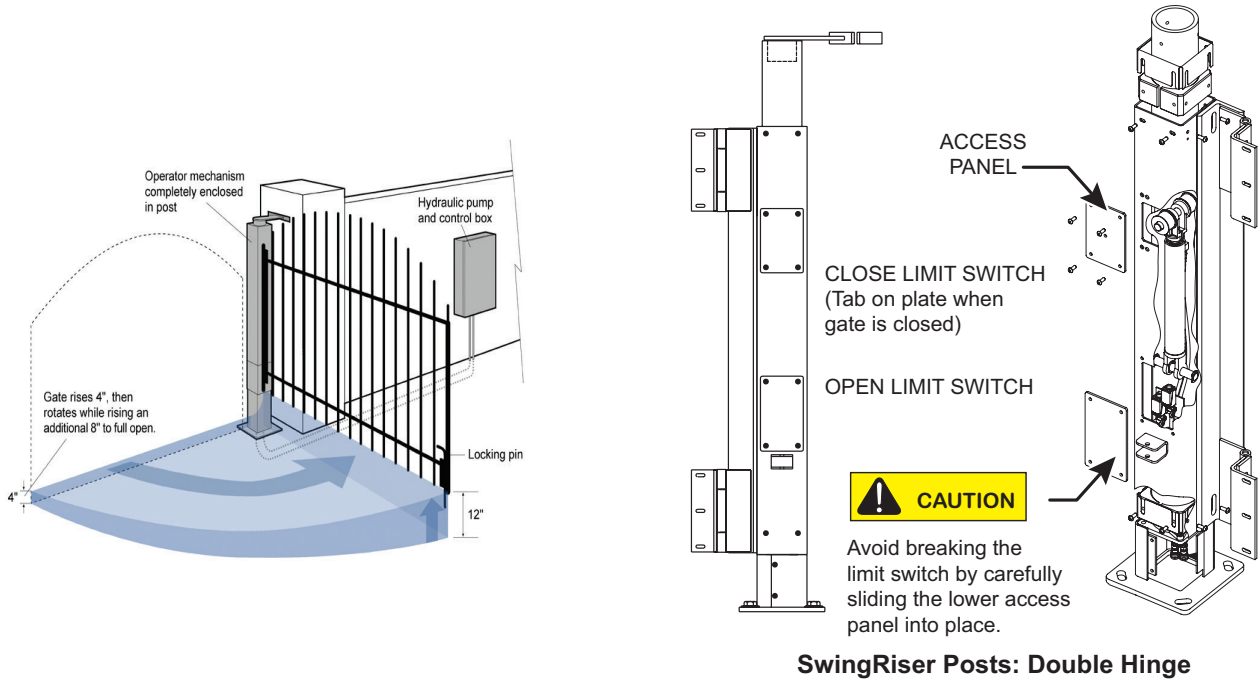
#### Special Notes:

- \*1. Your gate and gate hardware will require more maintenance than your HySecurity operator. A damaged gate or worn hardware may cause slow or erratic operation and will result in excess drive wheel wear. Lubricate gate hardware more frequently and check for smooth operation by opening toggle clamping mechanism and then manually pushing gate. One person should easily be able to push all but largest of gates. Damaged or warped gate panels should be straightened or replaced.
- \*2. Check anchor bolts are tight and cover secure.
- \*3. Fluid level should remain no less than one inch below filler hole. Refer to maintenance instructions for fluid filling. Loss of fluid is not normal and indicates a leak that must be located and repaired. Use Uniflow fluid, part MX000970, if additional fluid is required
- \*4. Clock battery check is done by cycling power and verifying there is not an Alert 17.

## SwingRiser Installation Drawings

Drawings pertinent to SwingRiser installation are found in this section. For additional information and order forms, refer to the HySecurity website. Before installing the SwingRiser, read this manual thoroughly. Site design and installation is the responsibility of the site specifier and installer. The information provided in these pages is for reference only.

### SwingRiser: Gate Swing And Pillar / Post Views



**SwingRiser Posts: Double Hinge**

Figure 10. SwingRiser Gate Swing and Pillar/Post Views

### SwingRiser Twin: Site Sketch

See "Site Planning Samples" on page 11.

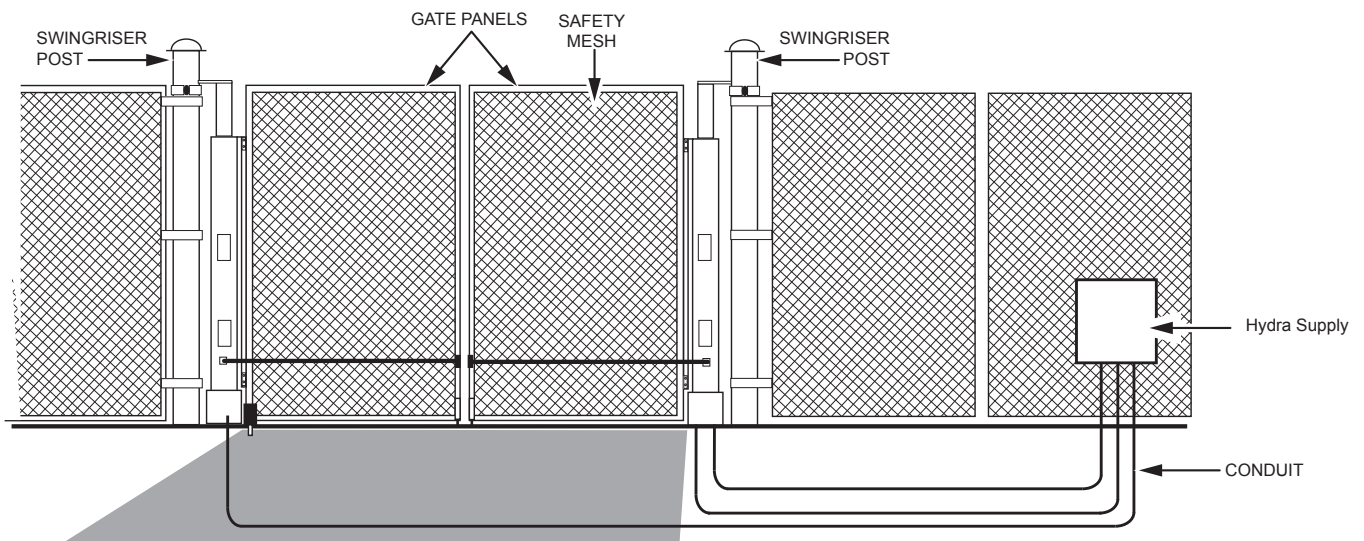


Figure 11. SwingRiser Twin Site Sketch

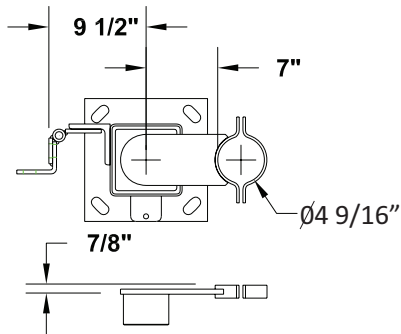
# SwingRiser Installation Drawings

## SwingRiser Post: Top Cap Options

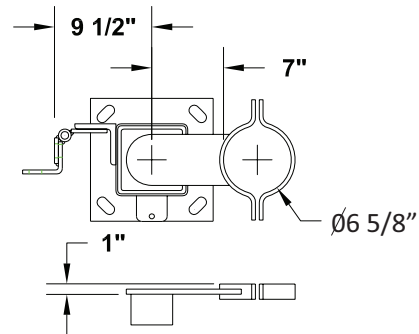
A variety of top caps exist for wall or post mounts. The different types are illustrated in the SwingRiser order form. Be sure to order the appropriate Top Cap for your site.

### 4" Pipe Bracket

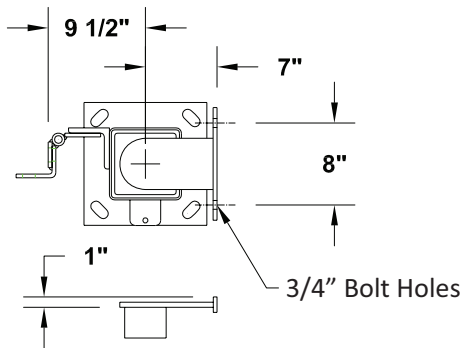
Use Restricted To 1000LB,  
12' Long Gate Panels Max.



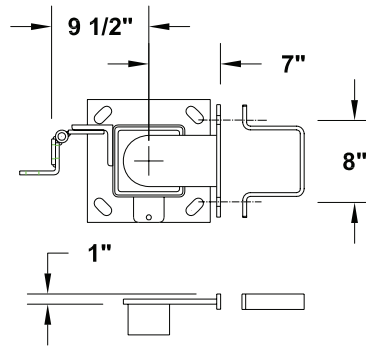
### 6" Pipe Bracket



### Pilaster Bracket



### 6" Sq Tube Bracket



### 8" Pipe Bracket

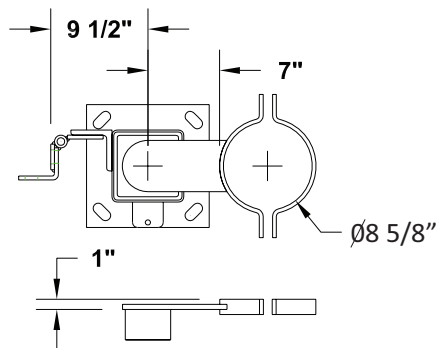
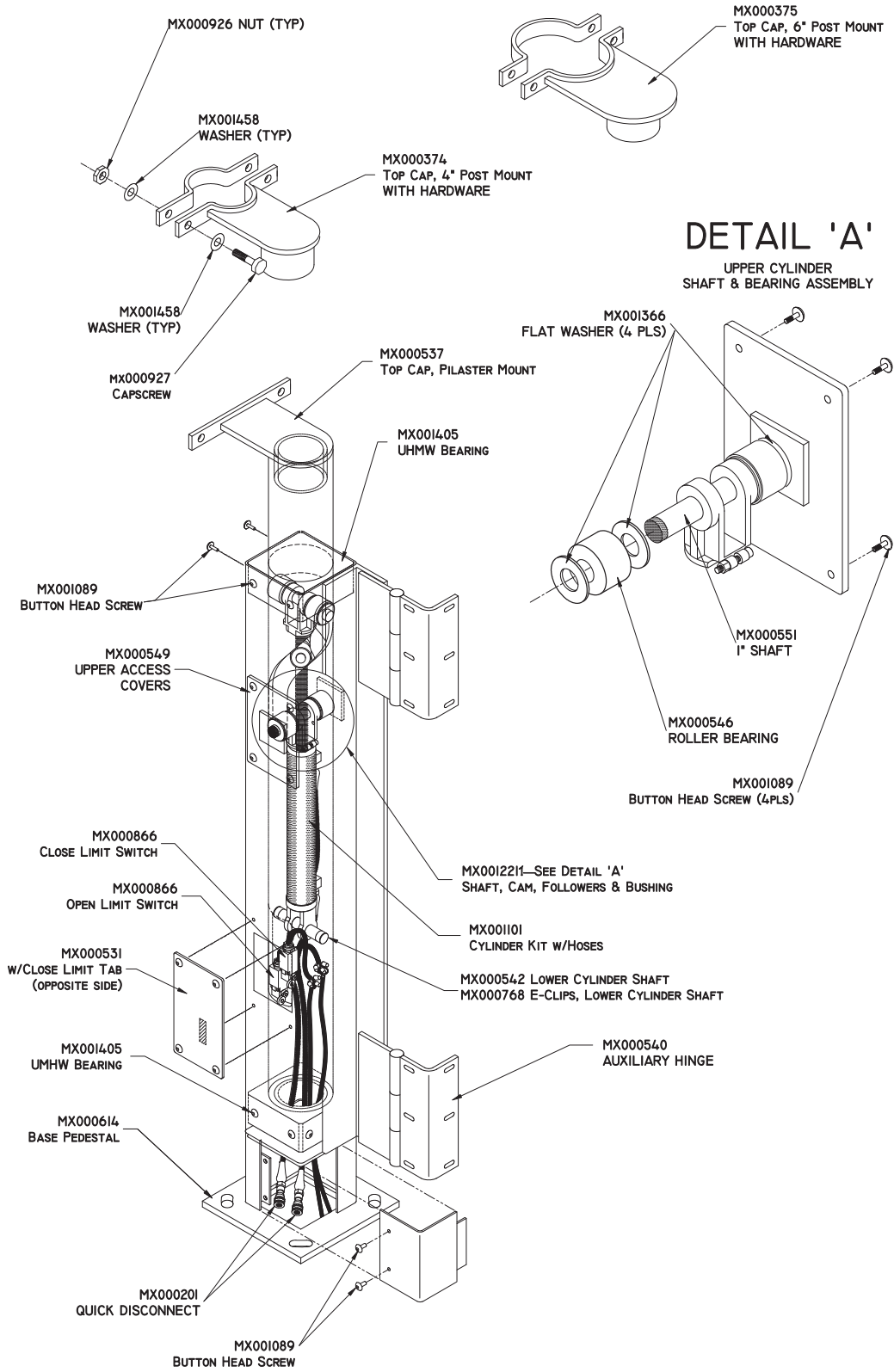


Figure 12. SwingRiser Post Top Cap Options

# SwingRiser Installation Drawings

## SwingRiser Post: Components

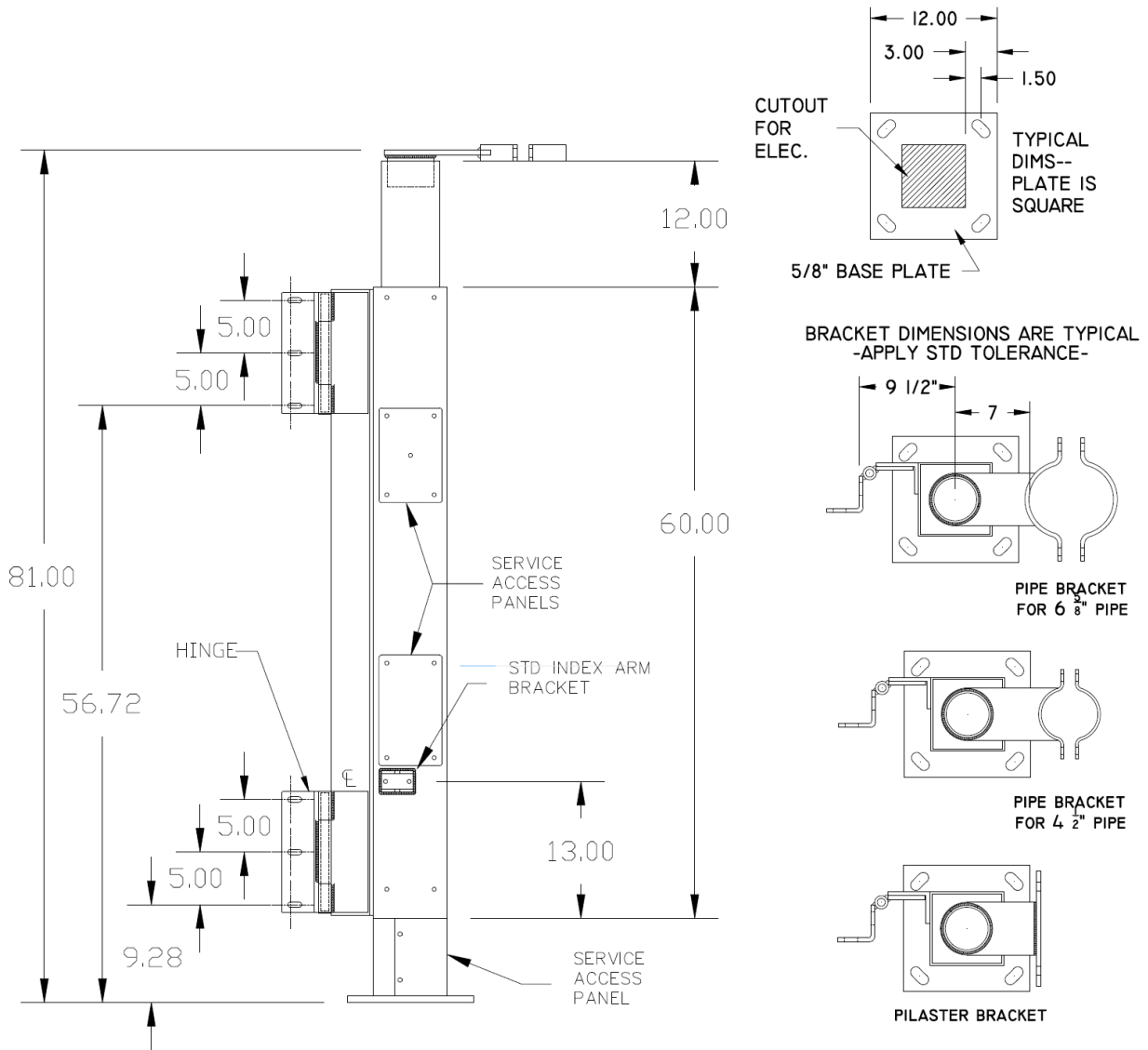


NOTE: DRAWING IS NOT TO SCALE.

Figure 13. SwingRiser Post Components

# SwingRiser Installation Drawings

## SwingRiser Posts & Installation Reference



STANDARD DIMENSIONS

NOTE: DRAWING IS NOT TO SCALE.

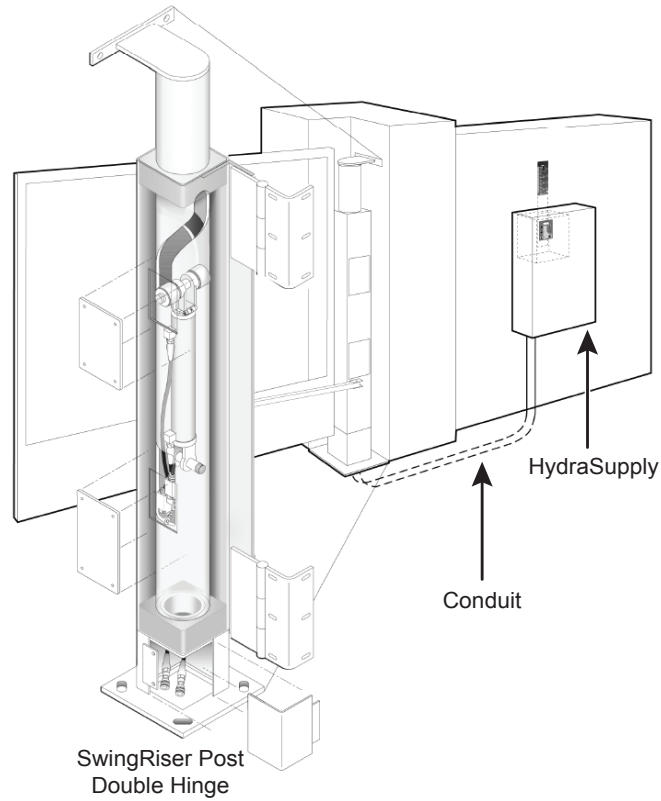
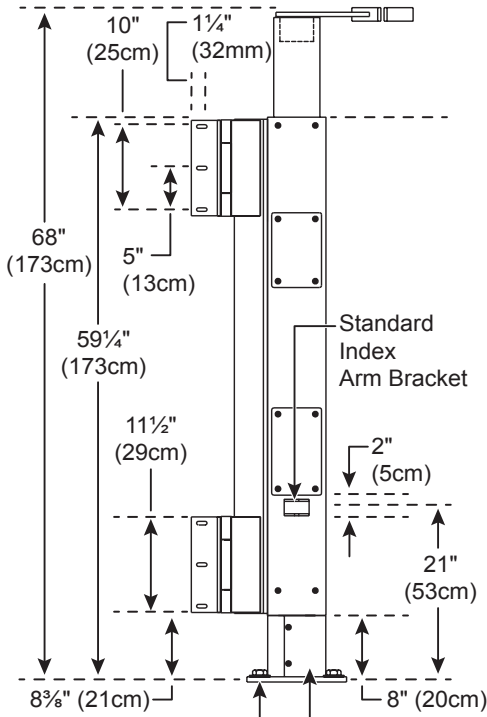
Figure 14. SwingRiser Posts and Installation Reference

# SwingRiser Installation Drawings

## SwingRiser Posts & Gate Site: Overview

Illustrations show:

- Clearance requirements
- Anchor bolt locations
- Support post dimensions



Hose Access Panel: 5/8" (16mm)

Use 5/8" to 3/4" anchor bolts.

Minimum clearance 1" between baseplate and backing post or wall.

Minimum clearance 3 1/2" between operator post and backing post.

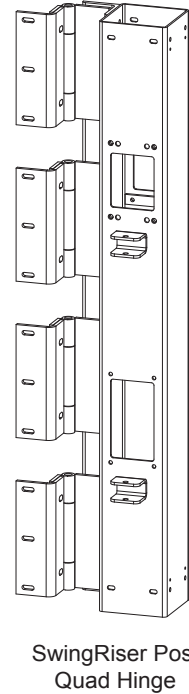
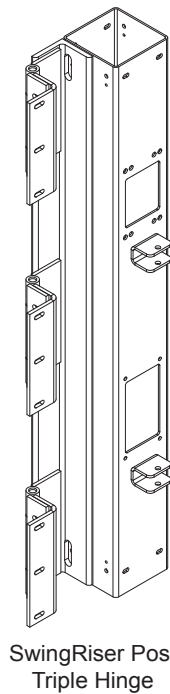
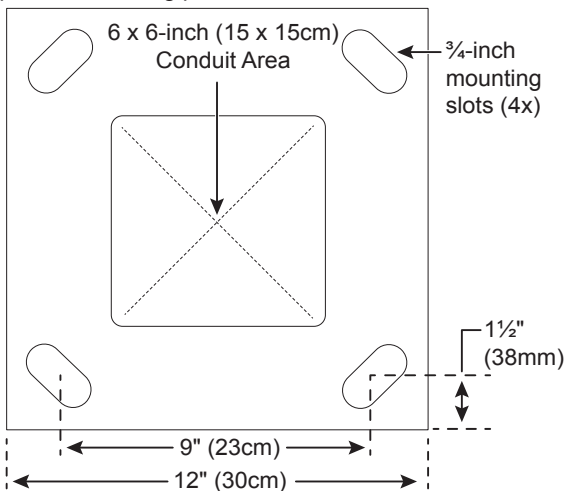
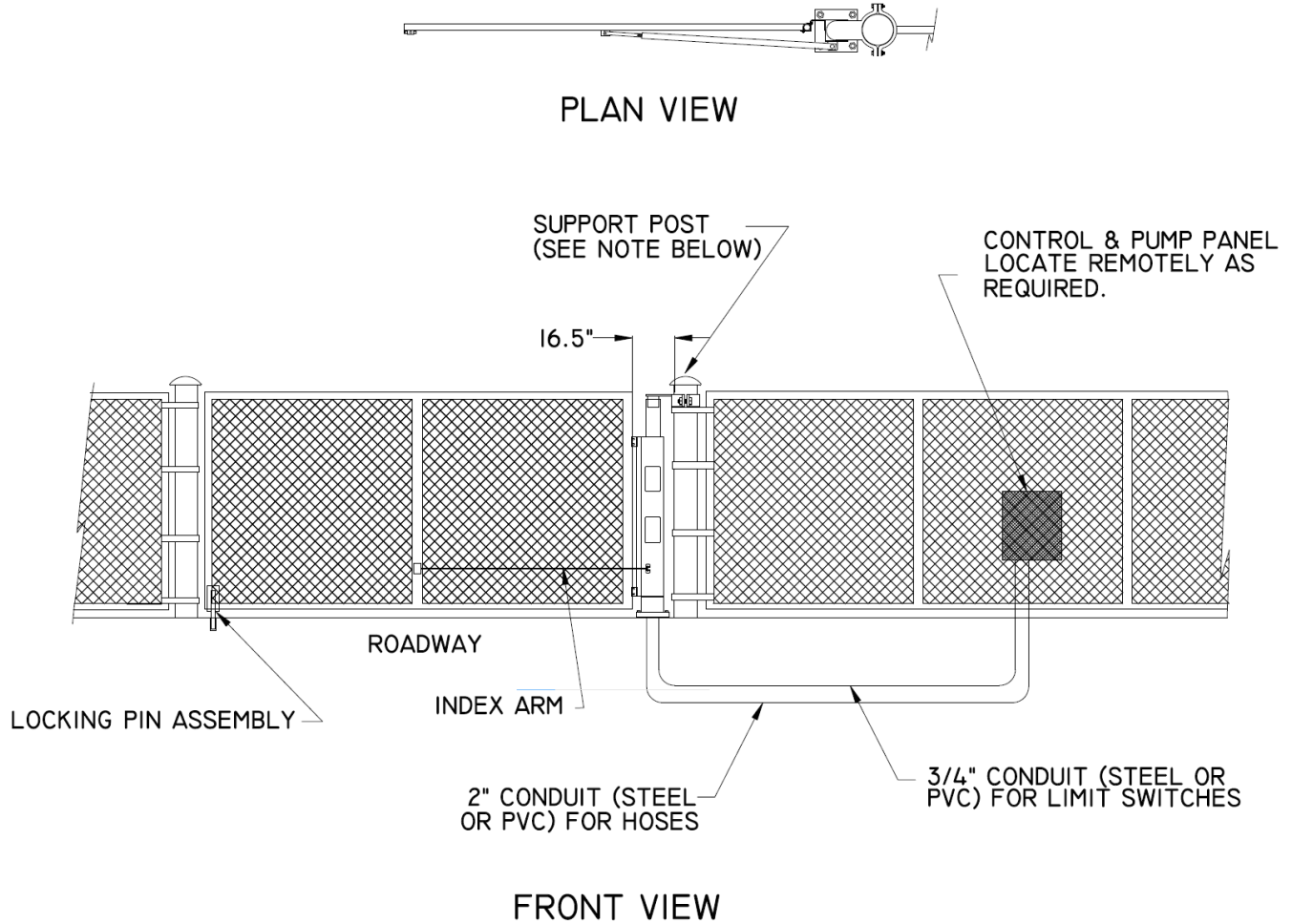


Figure 15. SwingRiser Posts and Gate Site Overview

# SwingRiser Installation Drawings

## SwingRiser Single (HRG 220): Installation Reference



### NOTES:

SEE DRAWING HR34 FOR POST ELEVATIONS AND PLAN VIEW

SEE DRAWING HR29 FOR HARDWARE DETAILS

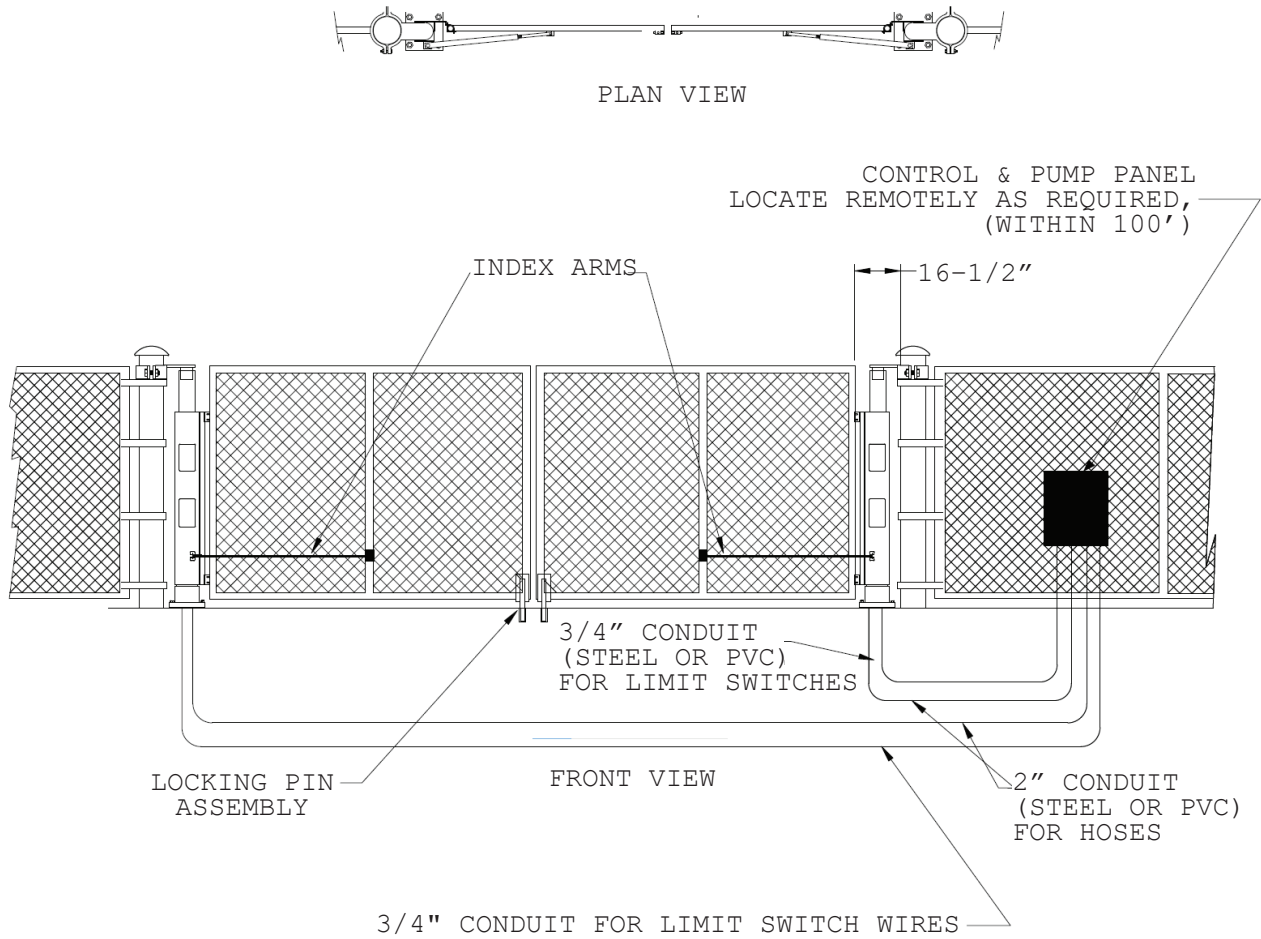
ALL STRUCTURAL SUPPORT AGAINST TIP OVERLOADS MUST BE PROVIDED BY OTHERS. THE OPERATOR POST ASSEMBLY PROVIDES SUPPORT FOR TORSIONAL LOADS ONLY.

NOTE: DRAWING IS NOT TO SCALE.

Figure 16. SwingRiser Single (HRG220) Installation Reference

# SwingRiser Installation Drawings

## SwingRiser Twin (HRG 222): Installation Reference



NOTE:  
SEE DRAWING HR34 FOR POST ELEVATIONS AND PLAN VIEW  
SEE DRAWING HR29 FOR HARDWARE DETAILS

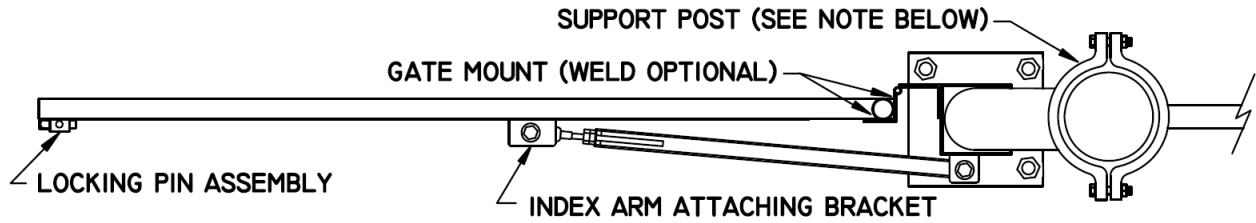
ALL STRUCTURAL SUPPORT AGAINST TIP OVERLOADS  
MUST BE PROVIDED BY OTHERS. THE OPERATOR POST  
ASSEMBLY PROVIDES SUPPORT FOR TORSIONAL LOADS ONLY.

NOTE: DRAWING IS NOT TO SCALE.

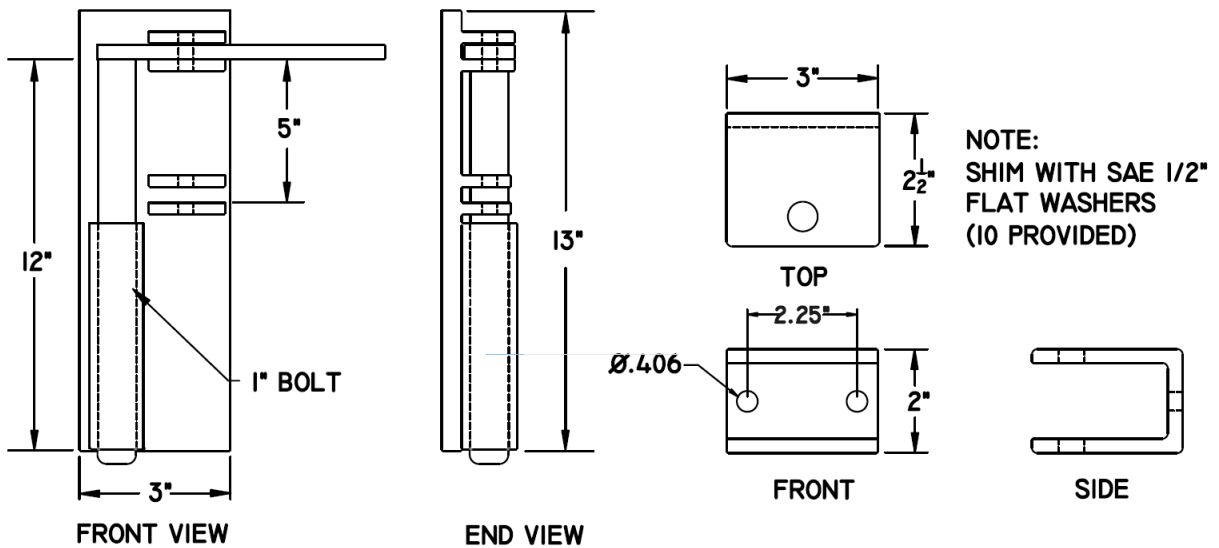
Figure 17. SwingRiser Twin (HRG 222) Installation Reference

# SwingRiser Installation Drawings

## SwingRiser: Index Arm & Locking Pin Overview

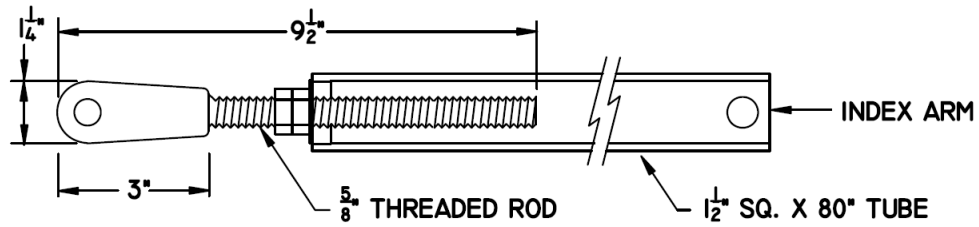


PLAN VIEW, GATE PANEL, OPERATOR POST, INDEX ARM AND LOCKING PIN



LOCKING PIN ASSEMBLY

ATTACHING BRACKET  
( GATE MOUNTED )



INDEX ARM EXTENTION

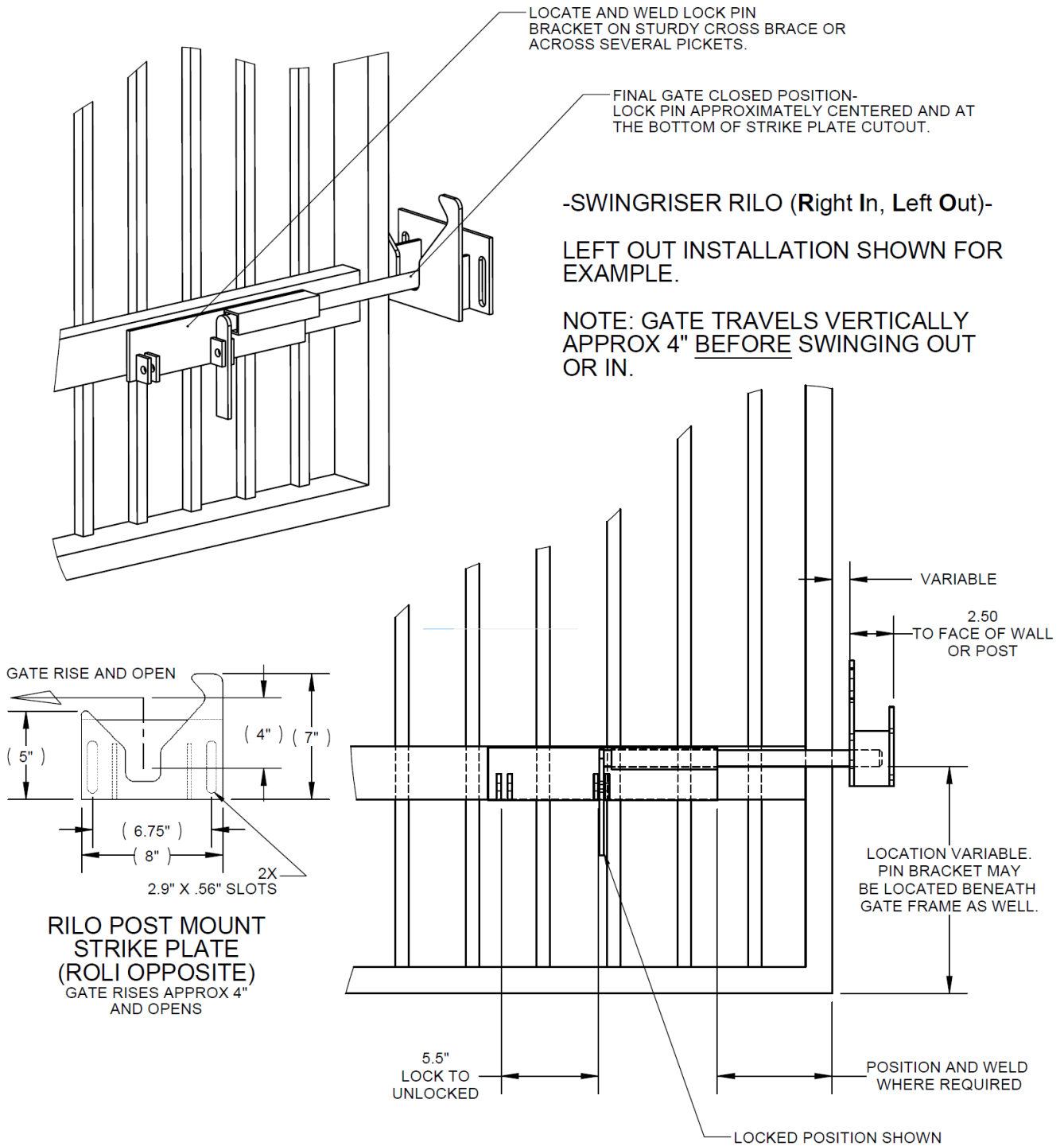
**NOTE:**  
ALL STRUCTURAL SUPPORT AGAINST TIP OVERLOADS MUST BE PROVIDED BY OTHERS. THE OPERATOR POST ASSEMBLY PROVIDES SUPPORT FOR TORSIONAL LOADS ONLY.

NOTE: DRAWING IS NOT TO SCALE.

Figure 18. SwingRiser Index Arm and Locking Pin Overview

# SwingRiser Installation Drawings

## SwingRiser: Post Mount Locking Pin Installation



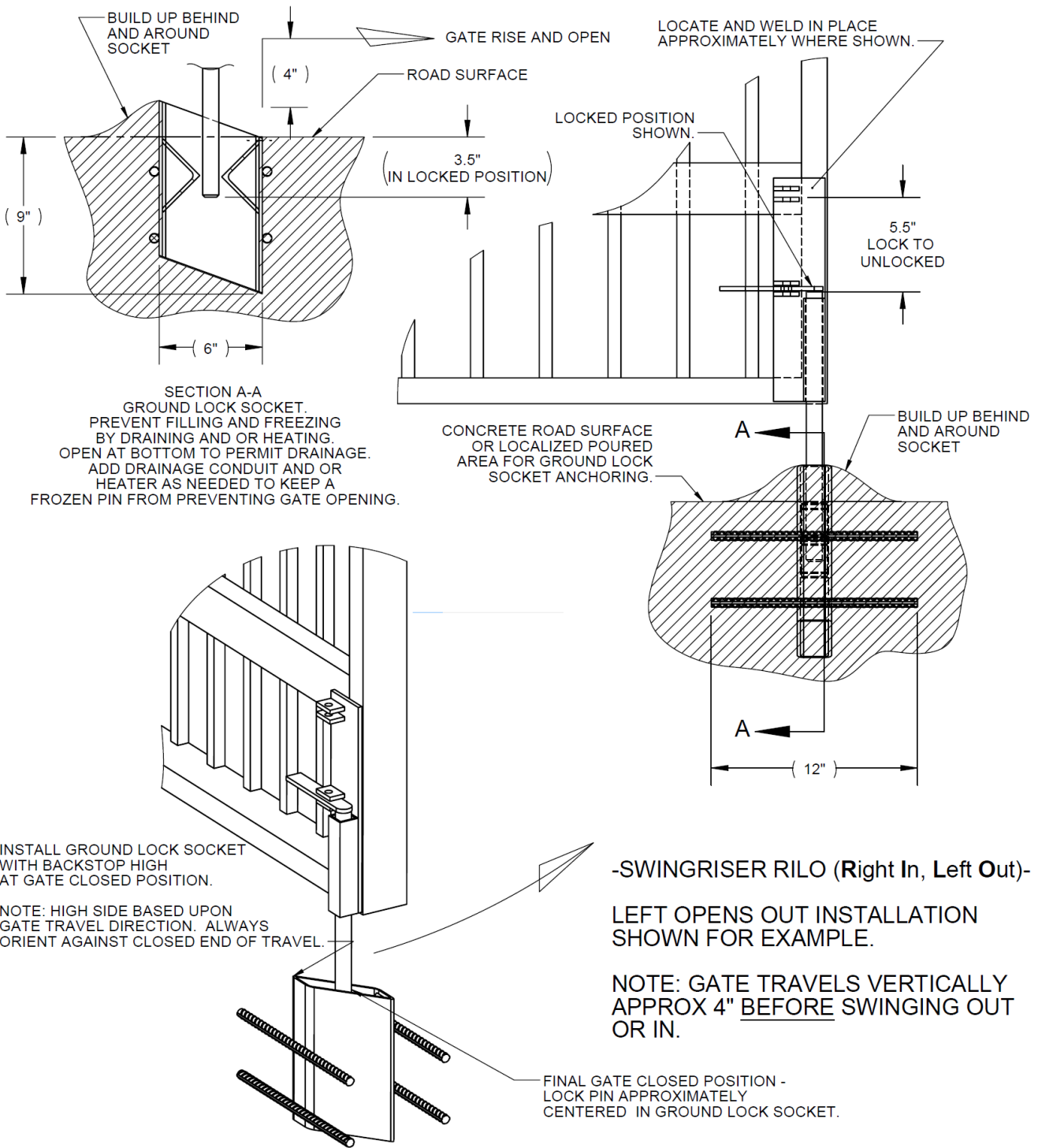
## SWINGRISER POST MOUNT LOCK INSTALLATION

NOTE: DRAWING IS NOT TO SCALE.

Figure 19. SwingRiser Post Mount Locking Pin Installation

# SwingRiser Installation Drawings

## SwingRiser: Ground Locking Pin Installation



## SWINGRISER GROUND LOCK INSTALLATION

NOTE: DRAWING IS NOT TO SCALE.

Figure 20. SwingRiser Ground Locking Pin Installation

# SwingRiser Installation Drawings

## SwingRiser: Hydrasupply Installation Overview

Wall or post-mount the HydraSupply cabinet (Type 3R). If planning a post mount, mounting holes need to be drilled (U-bolts, fasteners, and unistrut are not provided). Cabinet may also be wall-mounted with anchor bolts.

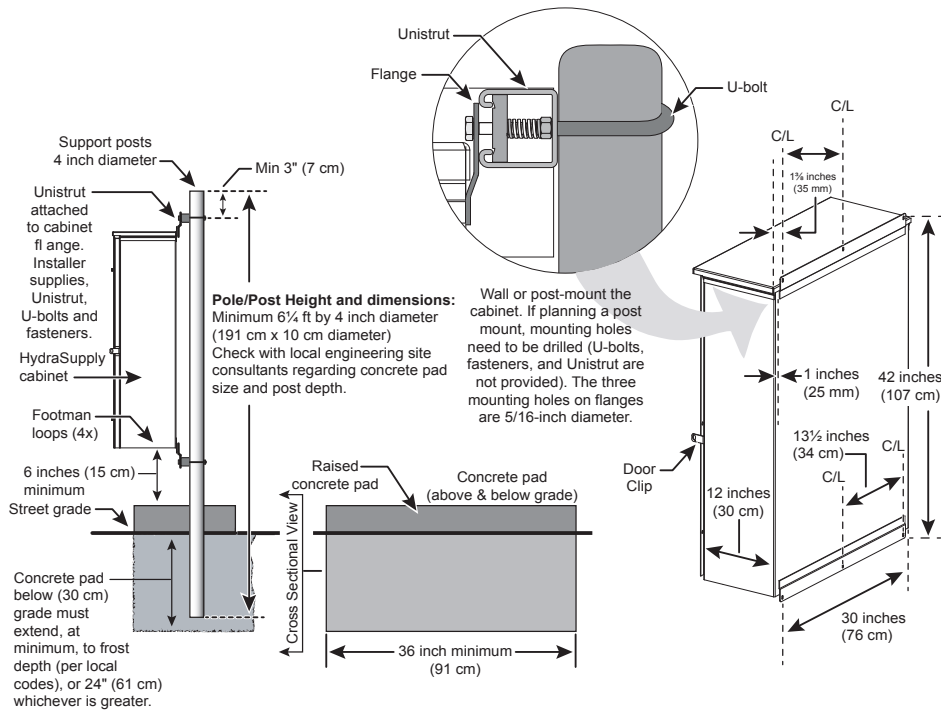


Figure 21. HydraSupply Installation Overview Profile and Control Box

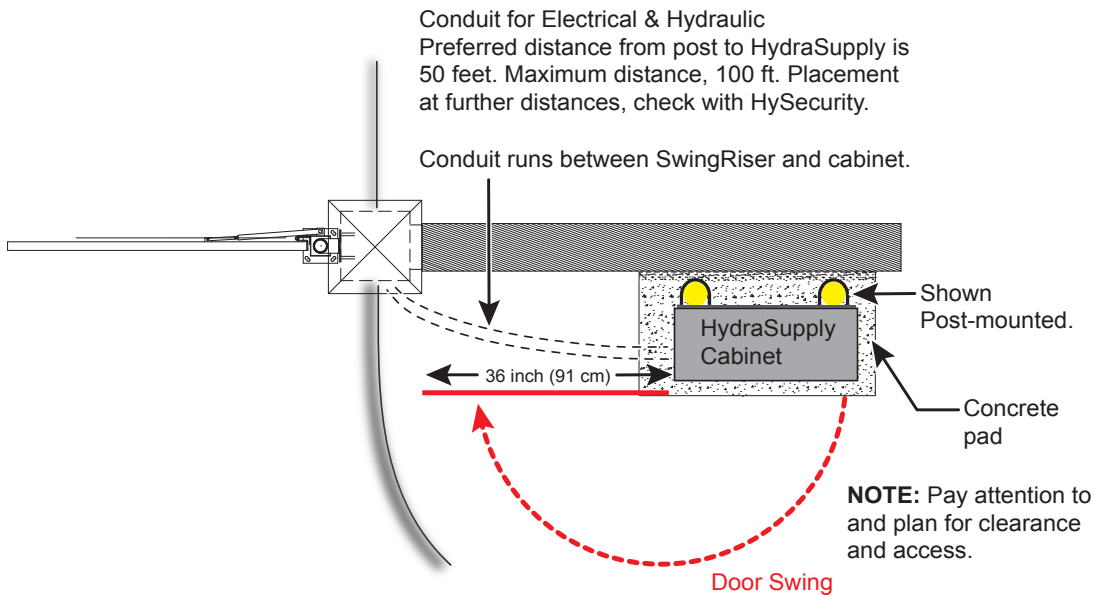


Figure 22. HydraSupply Installation Overview Top Electrical and Hydraulic Conduits

## Appendix A - French Translations

The following French translations provided below are found in the Safety Section located at the beginning of the manual.

English	French
<p><b>IMPORTANT SAFETY INSTRUCTIONS WARNING</b> – To reduce the risk of injury or death:</p>	<p><b>INSTRUCTIONS DE SÉCURITÉ IMPORTANTES</b> <b>AVERTISSEMENT</b> – Pour réduire les risques de blessures et de mort :</p>
<p>1. READ AND FOLLOW ALL INSTRUCTIONS.</p>	<p>1. LISEZ CETTE NOTICE ET CONFORMEZ-VOUS AUX MISES EN GARDE</p>
<p>2. Never let children operate or play with gate controls. Keep the remote control away from children.</p>	<p>2. Ne laissez jamais les enfants manoeuvrer les commandes de la barrière ou jouer avec celles-ci. Laissez la télécommande hors de la portée des enfants.</p>
<p>3. Always keep people and objects away from the gate. <b>NO ONE SHOULD CROSS THE PATH OF THE MOVING GATE.</b></p>	<p>3. Tenez toujours à l'écart de la barrière toute personne ou tout objet avoisinant. <b>IL NE FAUT JAMAIS PASSER DANS LA TRAJECTOIRE D'UNE BARRIÈRE EN MOUVEMENT.</b></p>
<p>4. Test the gate operator monthly. The gate <b>MUST</b> reverse on contact with a rigid object or stop when an object activates the non-contact sensors. After adjusting the force or the limit of travel, retest the gate operator. Failure to adjust and retest the gate operator properly can increase the risk of injury or death.</p>	<p>4. Vérifiez le fonctionnement de l'ouvre-barrière une fois par mois. Le sens de la course <b>DOIT</b> s'inverser lorsque la barrière entre en contact avec un objet dur ou la barrière <b>DOIT</b> s'arrêter lorsqu'un objet active les capteurs sans contact. Vérifiez à nouveau l'ouvre-barrière après tout réglage de la force de déclenchement ou du seuil de fin de course. Un réglage incorrect de l'ouvre-barrière ou l'omission de vérifier à nouveau le fonctionnement de l'ouvre-barrière peut causer des blessures, voire la mort.</p>
<p>5. Use the emergency release only when the gate is not moving.</p>	<p>5. Ne déclenchez le dispositif de désaccouplement d'urgence que lorsque la barrière ne bouge pas.</p>
<p>6. <b>KEEP GATES PROPERLY MAINTAINED.</b> Read the user's manual. Have a qualified service person make repairs to gate hardware.</p>	<p>6. <b>ASSUREZ-VOUS QUE LA BARRIÈRE EST CORRECTEMENT ENTRETENUE.</b> Lisez le manuel de l'utilisateur. Confiez la réparation du matériel de la barrière à un technicien qualifié.</p>
<p>7. The entrance is for vehicles only. Pedestrians must use separate entrance.</p>	<p>7. La voie d'accès est réservée aux véhicules seulement. Les piétons doivent utiliser une voie d'accès différente.</p>
<p>8. <b>SAVE THESE INSTRUCTIONS.</b></p>	<p>8. <b>CONSERVEZ CES INSTRUCTIONS.</b></p>

## Appendix A - French Translations

English	French
<p>2.3 Install the gate operator only when:</p> <p>a. The operator is appropriate for the construction of the gate and the usage Class of the gate,</p> <p>b. All openings of a horizontal slide gate are guarded or screened from the bottom of the gate to a minimum of 1.83 m (6 ft) above the ground to prevent a 57.2 mm (2-1/4 inch) diameter sphere from passing through the openings anywhere in the gate, and in that portion of the adjacent fence that the gate covers in the open position,</p> <p>c. All exposed pinch points are eliminated or guarded, and</p> <p>d. Guarding is supplied for exposed rollers.</p>	<p>2.3 N'installez l'ouvre-barrière que si :</p> <p>a. l'ouvre-barrière est approprié pour la structure et la classe d'utilisation de la barrière;</p> <p>toutes les ouvertures de la barrière coulissante sont protégées ou grillagées du bas de la porte jusqu'à un minimum de 1,83 m (6 pi) du sol si bien qu'une sphère de 57,2 mm (2 1/4 po) de diamètre ne peut passer par une ouverture au niveau de la barrière et de la portion de la clôture adjacente que la barrière couvre en position ouverte;</p> <p>c. tous les points de pincement sont éliminés ou protégés;</p> <p>d. des protections sont fournies pour les galets exposés.</p>
<p>2.4 The operator is intended for installation only on gates used for vehicles. Pedestrians must be supplied with a separate access opening. The pedestrian access opening shall be designed to promote pedestrian usage. Locate the gate such that persons will not come in contact with the vehicular gate during the entire path of travel of the vehicular gate.</p>	<p>2.4 L'ouvre-barrière est destiné à n'être installé que sur des barrières utilisées pour les véhicules. Il faut fournir une autre voie d'accès aux piétons. La voie d'accès pour les piétons doit être conçue pour favoriser le passage des piétons. Placez la barrière de sorte que personne ne puisse entrer en contact avec la barrière pour les véhicules sur l'ensemble de sa trajectoire</p>
<p>2.5 The gate must be installed in a location so that enough clearance is supplied between the gate and adjacent structures when opening and closing to reduce the risk of entrapment. Swinging gates shall not open into public access areas.</p>	<p>c) Pour réduire les risques de coincement lors de l'ouverture et de la fermeture, la barrière doit être installée dans un endroit où la barrière et les structures avoisinantes sont suffisamment éloignées l'une de l'autre. Les barrières battantes ne doivent pas ouvrir dans une zone d'accès public.</p>
<p>2.6 The gate must be properly installed and work freely in both directions prior to the installation of the gate operator. Do not over-tighten the operator clutch or pressure relief valve to compensate for a damaged gate.</p>	<p>2.6 La barrière doit être bien installée et fonctionner librement dans les deux directions avant d'entreprendre l'installation de l'ouvre-barrière. Ne serrez pas trop l'embrayage ou la soupape de surpression de l'ouvre-barrière pour compenser une barrière endommagée.</p>

## Appendix A - French Translations

English	French
<p>2.7 Controls intended for user activation must be located at least 1.83 m (6 ft) away from any moving part of the gate and where the user is prevented from reaching over, under, around or through the gate to operate the controls. Exception: Emergency access controls only accessible by authorized personnel (e.g. fire, police, EMS) may be placed at any location in the line-of-sight of the gate.</p>	<p>2.7 Les commandes destinées à l'activation par l'utilisateur doivent être situées à au moins 1,83 m (6 pi) des pièces mobiles de la barrière et à un endroit où l'utilisateur ne peut pas atteindre les commandes par le dessus, par le dessous, par les côtés et au travers de la barrière. Exception : Les commandes d'accès d'urgence accessibles au personnel autorisé seulement (p. ex. pompier, policier, SMU) peuvent être placées à tout endroit dans le champ de visibilité de la barrière.</p>
<p>2.8 The Stop and/or Reset button must be located in the line of-sight of the gate. Activation of the reset control shall not cause the operator to start.</p>	<p>2.8 Le bouton d'arrêt, le bouton de réenclenchement ou ces deux boutons doivent être situés dans le champ de visibilité de la barrière. L'activation des commandes de réenclenchement ne doit pas mettre en marche l'ouvrebarrière.</p>
<p>2.9 A minimum of two (2) WARNING SIGNS shall be installed, in the area of the gate. Each placard is to be visible by persons located on the side of the gate on which the placard is installed.</p>	<p>2.9 Au moins deux panneaux de mise en garde doivent être installés dans la zone de la barrière. Chaque étiquette doit être visible des personnes situées de chaque côté de la barrière sur laquelle l'étiquette est installée.</p>
<p>2.10 For gate operators utilizing a non-contact sensor</p>	<p>2.10 Pour les ouvre-barrières qui fonctionnent avec des capteurs</p>
<p>a. See instructions on the placement of non-contact sensors for each Type of application,</p>	<p>a. Voir les instructions sur le positionnement des capteurs sans contact pour chaque type d'utilisation.</p>
<p>b. Care shall be exercised to reduce the risk of nuisance tripping, such as when a vehicle, trips the sensor while the gate is still moving, and</p>	<p>b. Des précautions doivent être prises pour réduire les risques de déclenchement inutile, comme lorsqu'un véhicule déclenche le capteur alors que la barrière est encore en mouvement.</p>
<p>c. One or more non-contact sensors shall be located where the risk of entrapment or obstruction exists, such as the perimeter reachable by a moving gate or barrier.</p>	<p>c. Un capteur sans contact ou plus doit être situé où il existe un risque de coincement ou d'obstruction, comme dans l'espace que peut occuper la barrière lorsqu'elle est en mouvement.</p>
<p>2.11 For a gate operator utilizing a contact sensor</p>	<p>2.11 Pour les ouvre-barrières qui fonctionnent avec des capteurs</p>
<p>a. One or more contact sensors shall be located where the risk of entrapment or obstruction exists, such as at the leading edge, trailing edge, and postmounted both inside and outside of a vehicular horizontal slide gate.</p>	<p>a. Au moins un capteur de contact doit être situé où il existe un risque de coincement ou d'obstruction, comme sur le bord d'ouverture, sur le bord de fermeture et sur les poteaux montés sur l'intérieur ou l'extérieur d'une barrière coulissante pour véhicules.</p>

## Appendix A - French Translations

English	French
<p>b. A hardwired contact sensor shall be located and its wiring arranged so that the communication between the sensor and the gate operator is not subjected to mechanical damage.</p>	<p>b. Un capteur de contact doit être installé et câblé de sorte à éviter que la communication entre le capteur et l'ouvrebarrière soit gênée par des dommages mécaniques.</p>
<p>c. A wireless device such as one that transmits radio frequency (RF) signals to the gate operator for entrapment protection functions shall be located where the transmission of the signals are not obstructed or impeded by building structures, natural landscaping or similar obstruction. A wireless device shall function under the intended end-use conditions.</p>	<p>c. Un dispositif sans fil, comme un appareil qui transmet des signaux de radiofréquence (RF) à l'ouvre-barrière pour prévenir le coincement, doit être situé à un endroit où la transmission des signaux ne sera pas obstruée ou gênée par des structures, des arbres ou d'autres obstacles similaires. Un dispositif sans fil doit fonctionner selon les conditions d'utilisation finale prévues.</p>
<p>d. One or more contact sensors shall be located on the inside and outside leading edge of a swing gate. Additionally, if the bottom edge of a swing gate is greater than 152 mm (6 inches) but less than 406 mm (16 inches) above the ground at any point in its arc of travel, one or more contact sensors shall be located on the bottom edge.</p>	<p>d. Au moins un capteur de contact doit être situé sur les bords d'ouverture intérieur et extérieur d'une barrière battante. De plus, si le dessous d'une barrière battante est situé à plus de 152 mm (6 po) mais à moins de 406 mm (16 po) du sol à l'un des points de sa trajectoire, au moins un capteur de contact doit être situé sur le bord inférieur.</p>

# Specifications

**SmartTouch 725**

## Technical Specifications

Model	SwingRiser 14 (SWR14)	SwingRiser 14-Twin (SWR14T)	SwingRiser 19 (SWR19)	SwingRiser 19-Twin (SWR19T)	SwingRiser 30 (SWR30)	SwingRiser 30-Twin (SW30T)
Duty Cycle	Continuous					
Horsepower	1 hp	2 hp	1 hp	2 hp	1 hp	2 hp
Drive	Hydraulic					
Gate Length Max.*	up to 9 ft (3 m)	up to 9 ft (3 m) each leaf	up to 16 ft (5 m)	up to 16 ft (5 m) each leaf	up to 16 ft (5 m)	up to 16 ft (5 m) each leaf
Gate Weight Max.*	1,000 lb (453 kg)	1,000 lb (453 kg) / leaf	1,600 lb (726 kg)	1,600 lb (726 kg) / leaf	3,000 lb (1,361 kg)	3,000 lb (1,361 kg) / leaf
Open/Close Time	14 seconds		19 seconds		30 seconds	
Temperature Rating	-40° to 158° F (-40° to 70° C)					
1 Phase Power	115/208/230V 60Hz 110/220V 50Hz **	208/230V 60Hz 220V 50Hz **	115/208/230V 60Hz 110/220V 50Hz **	208/230V 60Hz 220V 50Hz **	115/208/230V 60Hz 110/220V 50Hz **	208/230V 60Hz 220V 50Hz **
3 Phase Power	208/230/460V 60Hz, 220/380/440V 50Hz					
Communication	BlueBUS, USB, Ethernet, RS-485, Bluetooth, OXI receiver					
User Controls	SmartTouch 725 Controller with 70+ configurable settings, 32 character OLED display and 7 tactile buttons, or Bluetooth smartphone interface, for programming. SmartTouch 720 Available without Bluetooth or Ethernet.					
Relay	8 Configurable relays: Two 250V 20A electromechanical relays and six 30VDC 2A solid state relays					
Finish	Zinc flame spray and ASTM B633 SC4 zinc plated (Inner post)					
Enclosure	HydraSupply II: Type 3R, 30w x 42h x 12d inch (76w x 107h x 30.5d cm)					
ETL Listed (UL 325)	Usage Class I, II, III, IV					
Warranty	5 year w/product registration					
UPS Battery Backup Power Options						
DC Power Supply with HyCharger DC †*	SwingRiser 14 DC (SWR14-DC)	SwingRiser 14-Twin DC (SWR14T-DC)	SwingRiser 19 DC (SWR19-DC)	SwingRiser 19-Twin DC (SWR19T-DC)	SwingRiser 30 DC (SWR30-DC)	SwingRiser 30-Twin DC (SWR30T-DC)
AC Power Supply with HyInverter AC*	SwingRiser 14 with HyInverter AC	—	SwingRiser 19 with HyInverter AC	—	SwingRiser 30 with HyInverter AC	—

\* The operator's normal duty cycle and the actual number of gate cycles available from battery depends upon gate resistance to travel, cycle length, battery size, state of charge and health, ambient temperature, accessory power draw and frequency of gate cycles during power outage.

\*\* Refer to Installed Options on pricing for all 50Hz voltages, which are special order.

† DC Power Supply with HyCharger DC purchased separately. 115V requires a 30A branch circuit. Choose voltage with care as chargers are not field convertible.

To enable fully automatic operation, all SWING gate operators require a minimum of ONE monitored external entrapment protection sensor to protect entrapment zones in either the open or close direction of travel. However, an additional monitored sensor is required if there is a risk of entrapment in both directions of gate travel. Visit [hysecurity.com/gatesafety](https://hysecurity.com/gatesafety) for more information on UL 325 standards and gate safety.



**Contact Information:** Visit <https://hysecurity.com> for installation manuals, replacement part instructions, part diagrams and more. Qualified HySecurity distributors are experienced and trained to assist in resolving installation problems. For the name of a qualified distributor near you, call HySecurity at 800-321-9947. \*Before contacting your distributor or HySecurity Technical Support, obtain the serial number of your operator.

# Warranty



6705 S 209<sup>th</sup> St, Ste 101  
Kent, WA 98032  
800-321-9947  
www.hysecurity.com

## 1. Warranty.

HySecurity Gate, Inc. ("HySecurity") warrants that at the time of sale each HySecurity-branded product that it sells will, in all material respects, conform to its then applicable specification and will be free from defects in material and manufacture.

The following additional durational warranties apply to HySecurity products, depending on whether (1) the product is purchased through an authorized HySecurity distributor and (2) whether a timely and complete product registration is submitted to HySecurity.

*It is therefore important that you register your product with HySecurity, online at [www.hysecurity.com/warranty](http://www.hysecurity.com/warranty), within the 60-day period described below.*

### 1(a) HySecurity Products Purchased Through Authorized Distributors and Properly Registered

For any gate operator product that is purchased from an authorized HySecurity distributor (this excludes product purchased through internet resellers or any distributor not authorized by HySecurity), if the product registration is completed by the Dealer/Installer or End User within 60 days of the date of purchase, the following warranty terms will apply. HySecurity warrants that the product will remain serviceable for the following periods:

- a) Hydraulic industrial gate operator hydraulics, controls, and mechanical components: Five Years or 500,000 gate cycles (whichever occurs first) after the date of installation,
- b) Hydraulic wedge operator hydraulics and controls: Five Years or 500,000 cycles (whichever occurs first) after the date of installation. Wedge mechanical components: Two Years after the date of installation,
- c) Electromechanical pad-mounted Slide and Swing operators: Five Years or 500,000 cycles (whichever occurs first) after the date of installation, except single family residential usage, where the warranty term shall be Seven Years after the date the product was shipped from HySecurity,
- d) Electromechanical linear actuator Swing operators: Two Years after the date of installation,
- e) Electromechanical surface mount wedge operator electronics: Two Years or 500,000 gate cycles (whichever occurs first), after the date of installation,
- f) Electromechanical Barrier Arm Operators: Two years or 1,000,000 gate cycles (whichever occurs first) after the date of installation,

provided that the preceding Five Year warranty period in (a), (b), and (c) will not extend beyond seven years from the date that the product was shipped from HySecurity, and the Two Year warranty period in (b), (d), (e), and (f) will not extend beyond four years from the date that the product was shipped from HySecurity.

The preceding warranty durations do not apply to the products or components described below (g-j), which have a shorter warranty period:

- g) Hydraulic gate operator drive wheels, including XtremeDrive™ wheels and rack: Two Years from date of installation.
- h) AC and DC power supplies, chargers, and inverters and HyNet™ Gateway: Two Years from date of installation, except batteries.
- i) Batteries: One Year from date of shipment from HySecurity.
- j) Components subject to normal wear including, but not limited to, chains, belts, idler wheels, sprockets and fuses: One Year from date of installation.

### 1(b) HySecurity Products Not Purchased Through an Authorized Distributor or Not Properly Registered within 60 Days

For any product that is not purchased from an authorized HySecurity distributor or for which the product registration was not completed by the Dealer/Installer/End User within sixty (60) days of the date of purchase, the following warranty will apply: HySecurity warrants that the product will remain serviceable for the following periods, which begin on the date that the product was shipped from HySecurity:

- a) All gate operators: One Year or 100,000 gate cycles, whichever comes first.
- b) AC and DC power supplies, chargers, or inverters: One Year.
- c) HyNet™ Gateway: One Year.
- d) Hydraulic gate operator drive wheels: One Year.

### 1(c) Replacement Parts

HySecurity warrants that replacement parts (whether new or reconditioned) will remain serviceable for One Year from the date that the part was shipped from HySecurity or the remaining period of the Gate Operator warranty, whichever is longer.

### 1(d) Limitations and Exclusions Applicable to Each of the Preceding Warranties.

The preceding warranties shall not apply to equipment that has been (1) installed, maintained, or used improperly or contrary to instructions; (2) subjected to negligence, accident, vandalism, or damaged by severe weather, wind, flood, fire,

terrorism or war; or (3) damaged through improper operation, maintenance, storage or abnormal or extraordinary use or abuse. Any modification made to products will void the warranty unless the modifications are approved in writing by HySecurity in advance of the change (this exclusion does not apply to normal installation of approved accessories and/or protective devices or sensors). It is the responsibility of the Distributor, Dealer/Installer, or End User to ensure that the software version in the product is maintained to the latest revision level.

The preceding warranties do not extend to accessories when those items carry another manufacturer's name plate and they are not a part of the base model. HySecurity disclaims all warranties for such accessory components, which carry only the original warranty, if any, of their original manufacturer. HySecurity hereby assigns its rights under such manufacturer warranties—to the extent that such rights are assignable—to Buyer.

These warranties extend to HySecurity's Distributors, to the Dealer/Installer, and to the first End User of the product following installation. They do not extend to subsequent purchasers.

## 2. Exclusion of Other Warranties.

The warranties contained in Section 1 are the exclusive warranties given by HySecurity and supersede any prior, contrary or additional representations, whether oral or written. Any prior or extrinsic representations or agreements are discharged or nullified. HYSECURITY HEREBY DISCLAIMS AND EXCLUDES ALL OTHER WARRANTIES—WHETHER EXPRESS, IMPLIED, OR STATUTORY—INCLUDING ANY WARRANTY OF MERCHANTABILITY, ANY WARRANTY OF FITNESS FOR A PARTICULAR PURPOSE, ANY LIABILITY FOR INFRINGEMENT, AND ANY WARRANTIES OTHERWISE ARISING FROM COURSE OF DEALING, COURSE OF PERFORMANCE, OR USAGE OF TRADE.

## 3. Buyer's Exclusive Remedies for Any Nonconformity.

If a HySecurity product fails to conform to the warranties in Section 1, Buyer must notify and order replacement parts from the Distributor through which the product was purchased within a reasonable time and in no event more than thirty (30) days after the discovery of the nonconformity. HySecurity will investigate and, in the event of a breach, will provide, within a reasonable period of time, one of the following: (1) repair or replacement of any nonconforming products or components or (2) refund of the price upon return of the nonconforming items. HySecurity reserves the right to supply used or reconditioned material for all warranty claims. HySecurity will not be considered to be in breach of or default under this Warranty because of any failure to perform due to conditions beyond its reasonable control, including any force majeure. This warranty does not cover any incidental expenses, including fines or penalties, temporary security, labor, shipping, travel time or standby time that are incurred for inspection or replacement of any nonconforming items. As a condition of warranty coverage, warranty claims must be submitted in accordance with the procedures described on the HySecurity form, "RMA Procedures."

THE REMEDY SELECTED BY HYSECURITY IN ACCORDANCE WITH THIS PARAGRAPH SHALL BE THE EXCLUSIVE AND SOLE REMEDY OF BUYER FOR ANY BREACH OF WARRANTY.

## 4. Exclusion of Consequential and Incidental Damages.

HYSECURITY SHALL NOT BE LIABLE FOR ANY INCIDENTAL, SPECIAL, OR CONSEQUENTIAL DAMAGES, WHETHER RESULTING FROM NONDELIVERY OR FROM THE USE, MISUSE, OR INABILITY TO USE THE PRODUCT OR FROM DEFECTS IN THE PRODUCT OR FROM HYSECURITY'S OWN NEGLIGENCE. This exclusion applies regardless of whether such damages are sought for breach of warranty, breach of contract, negligence, or strict liability. This exclusion does not apply to claims for bodily injury or death.

## 5. Severability.

If any provision of this warranty is found to be invalid or unenforceable, then the remainder shall have full force and effect.

## 6. Proprietary Rights.

HySecurity retains and reserves all right, title, and interest in the intellectual property rights of its products, including any accompanying proprietary software. No ownership of any intellectual property rights in the products or accompanying software is transferred to Distributor, Dealer/Installer, or End User.

## 7. Applicable Law.

This warranty will be interpreted, construed, and enforced in all respects in accordance with the laws of the State of Washington, without reference to its choice of law principles. The U.N. Convention on Contracts for the International Sale of Goods will not apply to this warranty.



**Technical Support**

760-438-7000

Monday - Friday, 6:00 a.m. – 4:00 p.m. PST

**Nice North America**

c/o Customer Service

5919 Sea Otter Place, Ste. 100  
Carlsbad, CA 92010



**Niceforyou.com**