



HydraSwing[™]

Compact power with HydraSupply II for large swing gates or high-wind applications

Easy to install, easy to operate direct-drive opener provides a solution for every installation with multiple controller and power options.

Features



Powerful

Up to 15,000 lb/40 ft per leaf.



Reliable

UPS backup with optional AC Power Supply w/HyInverter AC[™].



Programmable and Gentle

Field programmable to specific site requirements. Soft-start, soft-stop.



Smart

Integrated primary/secondary controls and preprogrammed relay settings.



Troubleshooting

Easy system troubleshooting with onboard event log.



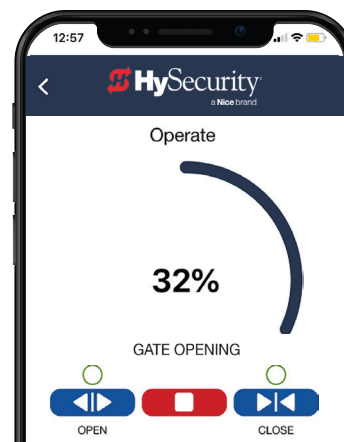
Secure

Heavy duty chassis, industrial grade components.



Made in USA

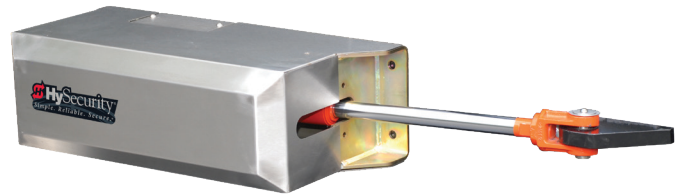
Designed, tested, and built within USA from globally sourced materials.



Works with
HySecurity
installer app.

HydraSwing™

Industrial grade components



powered by
SmartTouch725

Technical Specifications

Model	HydraSwing 40 (HSW40)	HydraSwing 40F (HSW40F)	HydraSwing 80F (HSW80F)	HydraSwing 150 (HSW150)
Single or Twin	Single leaf	Single leaf	Single leaf	
Duty Cycle	Continuous			
Drive	VFD controlled Hydraulics			
Open/Close Time	15-20 seconds, field adjustable**	10-15 seconds, field adjustable**	15-25 seconds, field adjustable**	20-30 seconds, field adjustable**
Gate Length Max.	up to 24 ft (7.3 m)*	up to 16 ft (5 m) wide*	up to 30 ft (9 m) wide*	up to 40 ft (12 m) wide*
Gate Weight Max.	4,000 lb (1,814 kg)*	4,000 lb (1,814 kg)*	8,000 lb (3,629 kg)*	15,000 lb (6,804 kg)*
UPS Battery Backup Cycles	Optional 230V AC Power Supply w/hyInverter AC™****			
Temperature Rating	-40° to 158° F (-40° to 70° C)			
Single Phase Voltages	208/230V 50/60Hz			
Three Phase Voltages	208/230V 50/60Hz or 380/460V 50/60Hz			
Communication	BlueBUS, USB, Ethernet, RS-485, Bluetooth, OXI receiver			
User Controls	SmartTouch 725 Controller with 70+ configurable settings, 32 character OLED display and 7 tactile buttons, or Bluetooth smartphone interface, for programming. SmartTouch 720 Available without Bluetooth or Ethernet.			
Relays	Three configurable user relays: Two 30VDC 2A solid state, one 240VAC, 20A electromechanical. Optional I/O Expansion module for 8 additional relay outputs			
Enclosure	Type 3R, 30w x 42h x 12d inch (76w x 107h x 30.5d cm)			
Finish	Zinc plated steel chassis with stainless steel cover		3/4 inch zinc plated steel chassis with black powder coated steel cover	
ETL Listed (UL 325)	Usage Class I, II, III, IV		Usage Class III, IV	
Warranty	5 year w/product registration			

* Gate length/weight specifications are dependent on height, percentage of open area on panel and anticipated wind speed.

** Actual open/close time dependent on gate weight/length, percentage of open area on panel and anticipated wind speed.

*** The operator's normal duty cycle and the actual number of gate cycles available from battery depends upon gate resistance to travel, cycle length, battery size, state of charge and health, ambient temperature, accessory power draw and frequency of gate cycles during power outage.



HySecurity
a Nice brand
support.hysecurity.com

Nice/HySecurity is an industry leader of automated gate and perimeter security solutions. The HySecurity brand provides high-quality, ultra-reliable industrial gate operators and crash-rated Hostile Vehicle Mitigation (HVM) vehicle barriers designed to secure and protect critical infrastructure and facilities worldwide.

niceforyou.com

