



Hostile Vehicle Mitigation

Solutions

**Crash-rated perimeter security
product catalog**



All gate installations must comply with UL325 and ASTM F2200 safety standards in addition to any local area codes and standards. Site, gate hardware, usage class, and other conditions will dictate the use of additional safety designs and components.

All safety related warnings and notices in this document, and any diagrams, drawings, photographs and similar content should not be considered guidance on how to make your particular site safe and code compliant. It is the responsibility of the gate system designer, installer and owner to assess appropriate safety design considerations, correct implementation and ongoing maintenance of any system.

This informational Product Catalog is distributed on an "as is" basis, without warranty. Every precaution has been taken in preparation of the entirety of the book. Neither the authors nor the publisher shall have any liability to any person or entity with respect to any loss or damage caused or alleged to be caused directly or indirectly by the information contained in this book.

©2024 Nice North America LLC. All rights reserved. This book may not be reproduced in whole or in part, in any way, shape, or form, by electronic or mechanical means, including information storage and retrieval systems without written permission from Nice HySecurity Gate, Inc., except in the case of an active, authorized Nice | HySecurity Reseller copying drawings, operator or part descriptions, and order forms exclusively for Nice | HySecurity product sales purposes.

HVM Operators Catalog

Contents

StrongArm® M30/M50	8	DC Power Supply with HyCharger™	35
StrongSlide™ M30/M50.....	15	HydraSupply XL™	38
Bollards M30/M50.....	18	StrongArm® M30/M50 Diagrams.....	44
HydraWedge™ SM50	21	HydraWedge™ SM50 Diagrams	52
WedgeSmart™ DC	26	WedgeSmart™ DC Diagrams	56
AC Power Supply with HyInverter™ AC	33	AC and DC Power Supply Diagrams.....	60

All specifications are subject to change without notice. PDF available online at hysecurity.com or contact your distributor.
partners.hysecurity.com/extranet/

Warranty: hysecurity.com/warranty



Why Nice?

Nice is a worldwide recognized industry leader of automated gate and perimeter security solutions.

The HySecurity brand provides high-quality, ultra-reliable industrial gate operators and crash-rated, Hostile Vehicle Mitigation (HVM) vehicle barriers designed to secure and protect critical infrastructure and facilities.

Hostile Vehicle Mitigation Operators Product Catalog

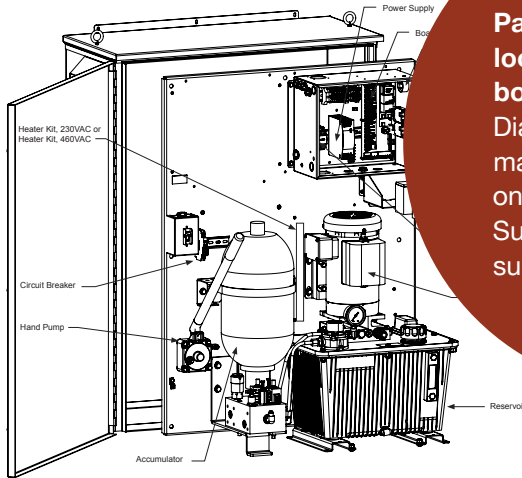


View the latest parts diagrams from anywhere.

- Quick search results by operator
- Easy to find part diagrams and part numbers
- Always updated
- Available digitally anywhere, anytime
- Download and print materials, as needed

HydraSupply XL™

HydraSupply XL Universal Control Box



This drawing is a representation and should be used for parts reference only.

Part Name	Part Number	HydraSupply XL Models
Battery Kit, 6Ah, Replacement	MX002008	all
Board, Display	MX03356	all
Board, Smart Touch Controller	MX04134	all
Buzzer, Piezo	MX001036	all
Circuit Breaker, 3A, DC	MX03967	all
Coupler, Motor, 5/8 inch Shaft, 6T	MX002054	all
Detector, Vehicle, Hy58™	MX04125	all
Hand Pump Assembly, 3000 PSI	MX04054	all
Heater Kit, 230VAC	MX001110	all
Heater Kit, 460VAC	MX001111	all
Keypad, Smart Touch Controller	MX03399	all
Motor, Electric, 60Hz, 2 hp, 10, 3450 RPM, 208-230VAC	MX001637	all
Motor, Electric, 60Hz, 2 hp, 30, 3450 RPM, 208-230/460VAC	MX001638	all
Power Supply, 120W, 24VDC	MX04097	all

82 hysecurity.com | 800-321-9947

Parts Diagrams are located at the back of this book as an addendum. Diagrams and support material can also be found on the Nice | HySecurity Support Center. <https://support.hysecurity.com>

Nice | HySecurity Support Center

Submit support request Sign in

Q Apollo

Swing Gate / Apollo 816

Brochures and Spec Sheets, Operator

Manuals, Operator

Apollo Linear Actuator Spec Sheet

Apollo 1500 Linear Actuator System (816 arm & 636 Control Board) Installation Reference Manual

Changed DIP Switch illustration on page 37 to show Dip Switch 1 as OFF (not ON) to ...

Apollo 816 Linear Actuator Installation Reference Manual

How to install the Apollo 816 linear actuator without a system

Apollo 816 Linear Actuator 120 Degree Install Instructions

How to install the Apollo linear actuator at a 120 Degree angle

Part Apollo 816 Linear Actuator Part Diagrams

Swing Gate

Vertical Lift

Can't find what you're looking for?

Contact the Nice | HySecurity Technical Support Team.

253-201-2918

Submit support request

Email Support

Email Sales

Nice | HySecurity Support Center

Back to Our Main Site

Nice HySecurity

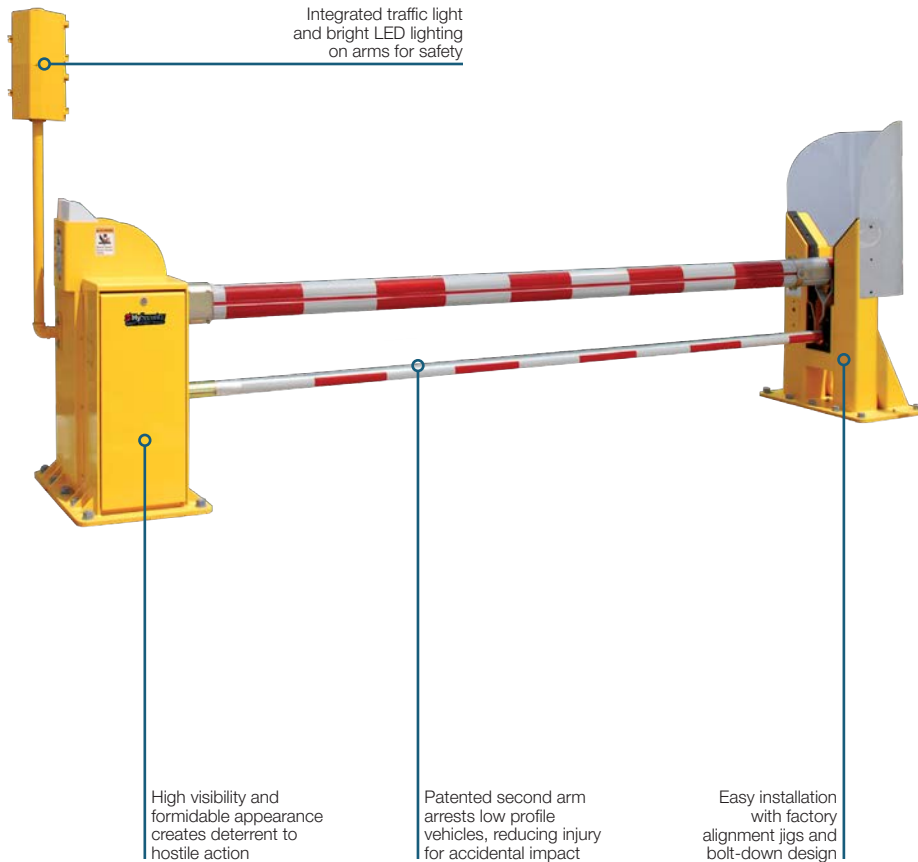


Barrier Arm

StrongArm® M30/M50	8
StrongArm M30/M50 Technical Specifications	9
StrongArm M30/M50 Model.....	10
StrongArm M30/M50 Installed Options	11
StrongArm M30/M50 II Parts and Accessories.....	12
Parts and accessories for StrongArm M30/M50	13

StrongArm® M30/M50

Maximum security and stopping power. Crash-rated vehicle barrier with patented dual arm design stops a 15,000 lb truck in its tracks.



Rating: The power to stop a truck in its tracks, with approximately 1 meter of penetration.



Tough: Aircraft-grade hydraulics and steel components provide the highest durability.



Design: Patented dual arm design prevents vehicles of all sizes from breaching the secure perimeter.



No Power: StrongArm M30 NP/M50 NP (No-power) models defend high security, low-traffic, sites that do not have power.



Speed: Open access points in as quick as six seconds, reducing traffic backups by minimizing gate open times.



Safety: Monitored photo eye stops arm when obstructed for enhanced safety.



Made in USA: Designed, tested, and built within USA from globally sourced materials.



Models: International certification models (CE) available.



Arm: Full 90° opening prevents tall vehicles from clipping arm.



StrongArm M30/M50 Technical Specifications

Model	StrongArmCrash M30	StrongArmCrash M30 CE	StrongArmCrash M50	StrongArmCrash M50 CE	StrongArmCrash M30 NP	StrongArmCrash M50 NP
Crash Certified	ASTM F2656-07 M30-P1*	ASTM F2656-07 M30-P1*	ASTM F2656-07 M50-P2*		ASTM F2656-07 M30-P1*	ASTM F2656-07 M50-P2*
Full Open Angle	90°				Adjustable 88° ± 2°	
Duty Cycle	100 cycles/hr**				Manually operated with rotary crank	
Horsepower	2 hp				n/a	
Drive	Hydraulic					
Open/Close Time	6 to 8 seconds depending on arm length				Open time: approx. 1 to 3 minutes depending on arm length; Close time: approx. 15 to 25 seconds depending on arm length	
Emergency Fast Operate	5 to 7 seconds depending on arm length					
Clear Opening	12 to 24 ft in 2 ft increments (366 to 732 cm in 61 cm increments). Call for custom arm length.					
UPS Battery Backup Cycles	Optional 230VAC Power Supply w/HyInverter™ AC for single-phase AC operators				n/a	
Temperature Rating	-40° to 158° F (-40° to 70° C) or -10° to 158° F (-23° to 70° C) Using biodegradeable fluid.					
Single Phase Voltages	208/230V 50/60Hz				n/a	
Three Phase Voltages	208/230V 50/60Hz or 380/460V 50/60Hz				n/a	
Included Accessories	Operator ships with one traffic light and wired through beam photo eye					
Communication	RS-232, RS-485				n/a	
User Controls	Smart Touch Controller with 70+ configurable settings. Smart Touch keypad and 32 character, OLED display or a PC using S.T.A.R.T. software.				n/a	
Relays	Two configurable user relays: 250VAC, 10A electromechanical; Optional Hy8Relay™ for 8 additional relay outputs				n/a	
Finish	Hot dipped galvanized standard. Optional textured powder coat over zinc-based undercoat.					
Foundation	Shallow mount: 6 x 6 x 2 ft (183 x 183 x 61 cm), 4,000 psi concrete or (CO + 8 ft) x 6 x 1 ft ((CO +244 cm) x 183 x 30.5 cm), 5,000 psi concrete. Deep mount: 4 x 4 x 4 ft (122 x 122 x 122 cm) 4,000 psi concrete. #6 rebar, grade 60		6 x 6 x 4 ft (183 x 183 x 122 cm) 4,000 psi concrete, #6 rebar, grade 60		Shallow mount: 6 x 6 x 2 ft (183 x 183 x 61 cm), 4,000 psi concrete or (CO + 8 ft) x 6 x 1 ft ((CO +244 cm) x 183 x 30.5 cm), 5,000 psi concrete. Deep mount: 4 x 4 x 4 ft (122 x 122 x 122 cm) 4,000 psi concrete. #5 rebar, grade 60	6 x 6 x 4 ft (183 x 183 x 122 cm) 4,000 psi concrete, #6 rebar, grade 60
ETL Listed	Certified to UL 508A by ETL				n/a	
Warranty	5 year w/product registration					

* P1 and P2 rated for 12 ft clear opening. StrongArm M30 features an ASTM F2656-07 M30 P1 rating (1m penetration). StrongArm M50 features an ASTM F2656-07 M50 P2 rating (1.2m penetration). Contact HySecurity to receive a copy of the ASTM F2656-07 M30 or M50 Test Certification.

** The operator's normal duty cycle and the actual number of arm cycles available from battery depends upon arm length/weight, battery size, state of charge and health, ambient temperature, accessory power draw and frequency of arm cycles during power outage. ExtremeCycle option available.







*** 208/230VAC, single-phase AC operators only. See AC Power Supply with HyInverter AC for more information.

Only HySecurity authorized distributors and installers, trained or authorized by HySecurity in proper installation techniques, operation and maintenance, are eligible to purchase HySecurity crash-rated barrier products. Patented dual arm design U.S. Pat. No. 9,822,501 B2

Note: Deep mount foundation is used for M30 crash test.

StrongArm M30/M50 Model

Solution	Models	Component Part Numbers	Weight	Dimensions	Freight Class
StrongArmCrash M30	StrongArm M30 Anchor and Template Kit, M30	S-SAM-1-6A MX002557	1,696 lb 139 lb	44"w x 48"d x 66"h 44"w x 26"d x 10"h	70 60
StrongArmCrash M30 CE	StrongArm M30 CE Anchor and Template Kit, M30	S-SAM-1-6D MX002557	1,696 lb 139 lb	44"w x 48"d x 66"h 44"w x 26"d x 10"h	70 60
StrongArmCrash M50	StrongArm M50 Anchor and Template Kit, M50	S-SAM-1-6E MX3030	1,696 lb 235 lb	44"w x 48"d x 66"h 44"w x 26"d x 10"h	70 60
StrongArmCrash M50 CE	StrongArm M50 CE Anchor and Template Kit, M50	S-SAM-1-6H MX3030	1,696 lb 235 lb	44"w x 48"d x 66"h 44"w x 26"d x 10"h	70 60
StrongArmCrash M30 NP	StrongArm M30 Non-Powered Anchor and Template Kit, M30	S-SAM-1-6C MX002557	1,676 lb 139 lb	44"w x 48"d x 66"h 44"w x 26"d x 10"h	70 60
StrongArmCrash M50 NP	StrongArm M50 Non-Powered Anchor and Template Kit, M50	S-SAM-1-6G MX3030	1,696 lb 235 lb	44"w x 48"d x 66"h 44"w x 26"d x 10"h	70 60

	StrongArm M30 has a shallow mount foundation for easy, economical installation. Reduce installation time and worries about utilities, water table, and other site concerns. Check with your sales representative for additional alternatives for foundation design. CE International certification models available.		Note: Completed and signed Fortified Crash Barrier application, agreement and operator order form required. Only HySecurity authorized distributors and installers, trained or authorized by HySecurity in proper installation techniques, operation and maintenance, are eligible to purchase HySecurity crash-rated barrier products. Training is periodically available and is required prior to the actual purchase or to receive crash-rated project installation leads and referrals from HySecurity.
	AC Power Supply Optional: AC Power Supply w/HyInverter™ AC which provides UPS battery backup for 208-230VAC, single-phase gate operators.		Operator ships with one traffic light and wired through beam photo eye (excluding NP models).
	ExtremeCycle option, for extremely high cycle sites, increases cycles from 100 up to 150 - 200 cycles/hr. Very few sites require more than the 100 cycles/hr already delivered by the standard StrongArm M30/M50 barrier arms.		
	Standard hot dipped galvanized steel chassis provides optimum corrosion protection. Choose optional finish of textured, ultra-durable "Signal Yellow" powder coat over zinc based undercoat for an enduring, attractive finish.		

StrongArm M30/M50 Installed Options

Name	Order code	Description
Color, Custom, M30	S-SAM-4-72	Custom Color M30 pivot post and catch post. Zinc plated with ultra-durable powder coat textured finish coat. (Contact factory for available colors.) Traffic light housing and pole are Black.
Color, Custom, M30 NP	S-SAM-4-77	Custom Color M30 NP (no power) pivot post and catch post. Zinc plated with an ultra-durable, textured finish coat. (Contact factory for available colors).
Color, Custom, M50	S-SAM-4-82	Custom Color M50 pivot post and catch post. Zinc plated with ultra-durable powder coat textured finish coat. (Contact factory for available colors.) Traffic light housing and pole are Black.
Color, Custom, M50 NP	S-SAM-4-87	Custom Color M50 NP (no power) pivot post and catch post. Zinc plated with an ultra-durable, textured finish coat. (Contact factory for available colors).
Color, Signal Black, M30	S-SAM-4-70	Signal Black M30 pivot post and catch post. Zinc plated with an ultra-durable, textured finish coat.
Color, Signal Black, M30 NP	S-SAM-4-75	Signal Black M30 NP (no power) pivot post and catch post. Zinc plated with an ultra-durable, textured finish coat.
Color, Signal Black, M50 NP	S-SAM-4-85	Signal Black M50 NP (no power) pivot post and catch post. Zinc plated with an ultra-durable, textured finish coat.
Crate, Export Shipping, M30/M50	S-SAM-B-01	Certified heat treated wood crate for export shipping, M30/M50.
ExtremeCycle, Custom Color, M30/M50	S-SAM-D-07	Hydraulic side cover upgraded to include cooling fan, thermostat, and wiring, allowing StrongArm M30/M50 to get up to 150-200 cycles/hour depending on arm length.
ExtremeCycle, Galvanized, M30/M50	S-SAM-D-06	Hydraulic side cover upgraded to include cooling fan, thermostat, and wiring, allowing StrongArm M30/M50 to get up to 150-200 cycles/hour depending on arm length.
ExtremeCycle, Signal Yellow, M30/M50	S-SAM-D-05	Hydraulic side cover upgraded to include cooling fan, thermostat, and wiring, allowing StrongArm M30/M50 to get up to 150-200 cycles/hour depending on arm length.
Heater, 208/230VAC, Catch Post	S-SAM-6-21	208/230VAC catch post heater.
Heater, 208/230VAC, Pivot and Catch Post	S-SAM-6-22	208/230VAC pivot and catch post heater
Heater, 208/230VAC, Pivot Post	S-SAM-6-20	208/230VAC Pivot post heater
Heater, 380VAC, Catch and Pivot Post	S-SAM-6-27	380VAC pivot and catch post heater.
Heater, 380VAC, Catch Post	S-SAM-6-28	380VAC catch post heater.
Heater, 460VAC, Catch Post	S-SAM-6-25	460VAC catch post heater.
Heater, 460VAC, Pivot and Catch Post	S-SAM-6-24	460VAC pivot and catch post heater.
Heater, 460VAC, Pivot Post	S-SAM-6-26	460VAC pivot post heater.
Lock, Magnetic, Arm	S-SAM-8-30	Magnetic lock for arm.
Photo Eye, Wired	S-SAM-7-50	Photo eye, through beam pair, 50 ft range AC or 24VDC. Included in operator price.
Radio Receiver, Single Channel, Open, M30/M50	S-SAM-9-00	Single channel receiver and coax antenna, wired for open control only.

StrongArm M30/M50 II Parts and Accessories

Name	Part Number	Description
Anchor and Template Kit, 12 inch depth, M30	MX4500	Anchor and template kit for 12 inch depth foundation. Used for embedding into the concrete foundation anchoring the StrongArm M30 Pivot and Catch Post. Includes templates to insure critical alignment between the two posts, steel anchor plates and 20 bolts with nuts and washers. Engineered to an ASTM F2656 M30 rating.
Anchor and Template Kit, M30	MX002557	Anchor and template kit used for embedding into the concrete foundation anchoring the StrongArm M30 Pivot and Catch Post. Includes templates to insure critical alignment between the two posts, steel anchor plates and 20 bolts with nuts and washers.
Anchor and Template Kit, M50	MX3030	Anchor and template kit used for embedding into the concrete foundation anchoring the StrongArm M50 Pivot and Catch Post. Includes templates to insure critical alignment between the two posts, steel anchor plates and 20 bolts with nuts and washers.
Arm, Lower, with Strap, M30 and M50, 12 ft	MX2604-12	Lower arm assembly for 14 ft clear opening. Includes linkage assembly and hardware.
Arm, Lower, with Strap, M30 and M50, 14 ft	MX52604-14	Lower arm assembly for 14 ft clear opening. Includes linkage assembly and hardware.
Arm, Lower, with Strap, M30 and M50, 16 ft	MX2604-16	Lower arm replacement assembly for 16 ft clear opening. Includes linkage assembly and hardware. Note: Lower restraining strap sold separately.
Arm, Lower, with Strap, M30 and M50, 18 ft	MX2604-18	Lower arm assembly for 18 ft clear opening. Includes linkage assembly and hardware. Note: Lower restraining strap sold separately.
Arm, Lower, with Strap, M30 and M50, 20 ft	MX2604-20	Lower arm assembly for 20 ft clear opening. Includes linkage assembly and hardware. Note: Lower restraining strap sold separately.
Arm, Lower, with Strap, M30 and M50, 22 ft	MX2604-22	Lower arm assembly for 22 ft clear opening. Includes linkage assembly and hardware. Note: Lower restraining strap sold separately.
Arm, Lower, with Strap, M30 and M50, 24 ft	MX2604-24	Lower arm assembly for 24 ft clear opening. Includes linkage assembly and hardware. Note: Lower restraining strap sold separately.
Arm, Upper, Manual, M30, 12 ft	MX3726	Upper NP (No power) arm replacement. Includes reflective tape (red/white) and restraining straps for StrongArm M30.
Arm Assembly, Upper, M30	MX3141	Upper arm assembly for 12 ft clear opening. Includes straps, LED lighting, and rubber pads. Arms are available in whole foot lengths from 12 feet to 24 feet, and length is indicated by the last two digits "NN". Fractional lengths can be accommodated for an additional charge. Contact HySecurity for details.
Arm Assembly, Upper, M50	MX3140	Upper arm assembly. Includes straps, LED lighting, and rubber pads. Arms are available in whole foot lengths from 12 feet to 24 feet, and length is indicated by the last two digits "NN". Fractional lengths can be accommodated for an additional charge. Contact HySecurity for details.
Beacon, Strobe, Amber, 24VDC	MX000997	24VDC Amber Beacon Strobe.
Cable, Smart Touch Controller	MX4138	Download cable with USB to RS-232 adapter, 6 ft, connects laptop to Smart Touch Controller, use with Smart Touch Analyze and Retrieve Tool (S.T.A.R.T.).
Detector, Vehicle, Hy5B™ 2.0	MX4621	1Improved loop detector module with digital interface to SmartCNX and all other HySecurity controllers. Automatically sets sensitivity. Automatically compensates for gate movement. Advanced loop diagnostics.
ExtremeCycle Kit, Custom Color	MX4667-02	ExtremeCycle retrofit kit for StrongArm M30/M50. ExtremeCycle is a cooling option that uses a thermostat-controlled fan in the cover door to keep the motor and hydraulics cool. Applicable when more than 100 cycles/hr is required. Custom color.
ExtremeCycle Kit, Galvanized	MX4667-03	ExtremeCycle retrofit kit for StrongArm M30/M50. ExtremeCycle is a cooling option that uses a thermostat-controlled fan in the cover door to keep the motor and hydraulics cool. Applicable when more than 100 cycles/hr is required. Galvanized finish.
ExtremeCycle Kit, Yellow	MX4667-01	ExtremeCycle retrofit kit for StrongArm M30/M50. ExtremeCycle is a cooling option that uses a thermostat-controlled fan in the cover door to keep the motor and hydraulics cool. Applicable when more than 100 cycles/hr is required. Yellow finish.
Heater, Catch Post, 208-230VAC	MX3007-01	208-230VAC catch post heater.
Heater, Pivot Post, 208-230VAC	MX3006-01	208-230VAC pivot post heater.
Light/Pole Assembly, Traffic, Black Pole	MX5638-01	Traffic light and pole assembly for StrongArm M30/M50. Welded steel square tube pole, powder coated black, with yellow and red LED signal. Order - 02 for CE applications.
Noise Isolator	MX001162	Open/Close/Stop noise/lightning isolator (long distance module).
Photo Eye Kit, Reflective, 40 ft, 24VDC	MX000999	Reflective photo eye kit, 40 ft range, AC or 24VDC, includes reflector, mounting bracket and hardware.
Photo Eye, Through Beam, 65 ft	MX5972-01	Through beam photo eye with integrated hood. Includes mounting hardware.
Push Button Station, 2 Button	MX001180	Push button station, 2 button, open/close (NEMA 1).

StrongArm M30/M50 II Parts and Accessories

Name	Part Number	Description
Push Button Station, 3 Button	MX001174	Push button control station, 3 button, open/close/stop (NEMA 1).
Receiver, Remote, Antenna and Coax Cable.	MCS106603	Antenna and coax cable for single and dual channel receiver.
Receiver, Remote, Single Channel	MCS109950	Linear Multicode™ receiver, 1 channel, 300MHz, includes antenna and 3 ft cable.
Relay Module, Hy8Relay™, Smart Touch	MX3307-02	Extended Hy8Relay module provides 8 additional programmable relay outputs for Smart Touch operators.
Signs, Moving Gate Warning, English	MX3193-01	Two UL 325 moving gate warning signs, English, 8.5 x 11 inch aluminum, includes 8 zip ties.
Timer, Clock, 7 day, 24 hour	MX001307	7 day 24 hour Clock Timer.
Transmitter, Remote, 1 Button	MCS106603	Linear Multicode™ transmitter, 1 button, 300MHz.
Transmitter, Remote, 2 Button	MCS412001	Linear Multicode™ transmitter, 2 button, 300MHz.

Parts and accessories for StrongArm M30/M50

Just a few of the many accessories available. See operator parts section for more.



AMBER STROBE BEACON
24VDC



LIGHT AND POLE ASSEMBLY



HY5B™ VEHICLE DETECTOR



CLOCK TIMER



**PUSH BUTTON STATION, 2 OR 3
BUTTON**



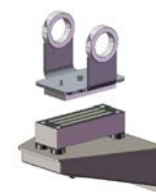
PHOTO EYE KITS



**RADIO RECEIVERS
& TRANSMITTERS**



HY8RELAY™



MAGNETIC LOCK KIT

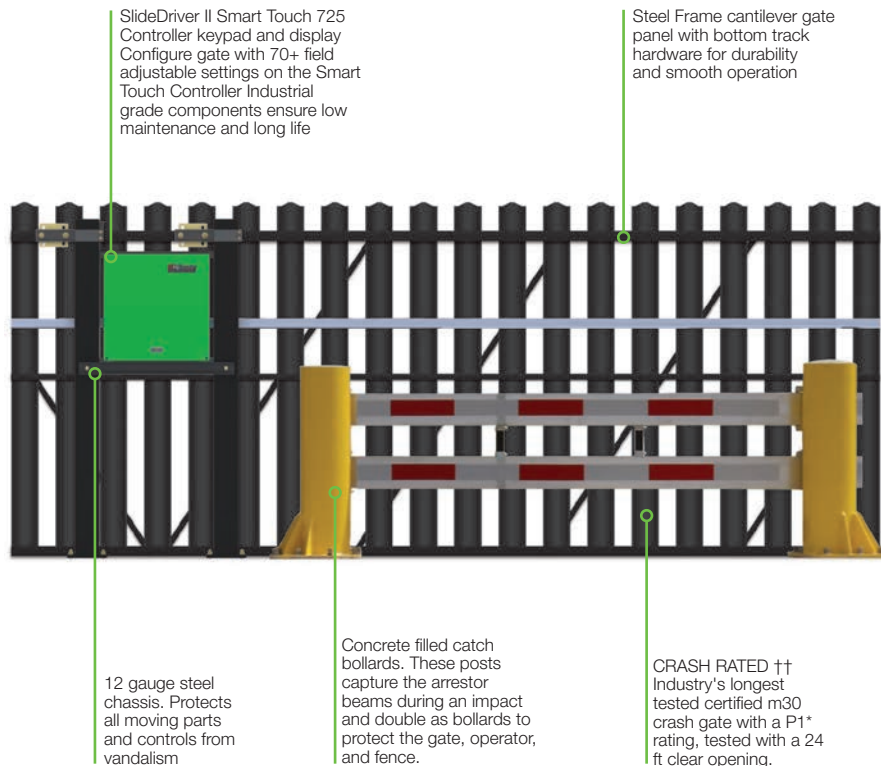


StrongSlide™ M30

StrongSlide™ M30/M50.....	15
Additional features	16

StrongSlide™ M30/M50

Industry's longest crash tested clear opening. The first crash-rated slide gates in the HySecurity StrongSlide family.



Easy operation: Light weight vehicle arrestor system reduces overall weight for easier operation and long service life.



Durable: Steel frame cantilever gate panel with bottom track hardware for durability and smooth operation.



Industry leading warranty: Both StrongSlide and SlideDriver II are protected by industry leading 5 year warranty**.



Crash Rated †: Industry's longest tested certified M30 crash gate with P1* rating, tested with a 24 ft clear opening.



Compatibility: Unified mounting template locates and aligns gate rollers, support posts, and arrestor catch bollards for easy installation.



Precise: Raised platform predrilled for SlideDriver™ II Installation.



Crash Rated ††: Certified M50 crash gate with P2 rating, tested with a 24 ft clear opening.

† Ratings: ASTM F2656-20 M30-P1. Contact HySecurity to receive a copy of the Test Certification.

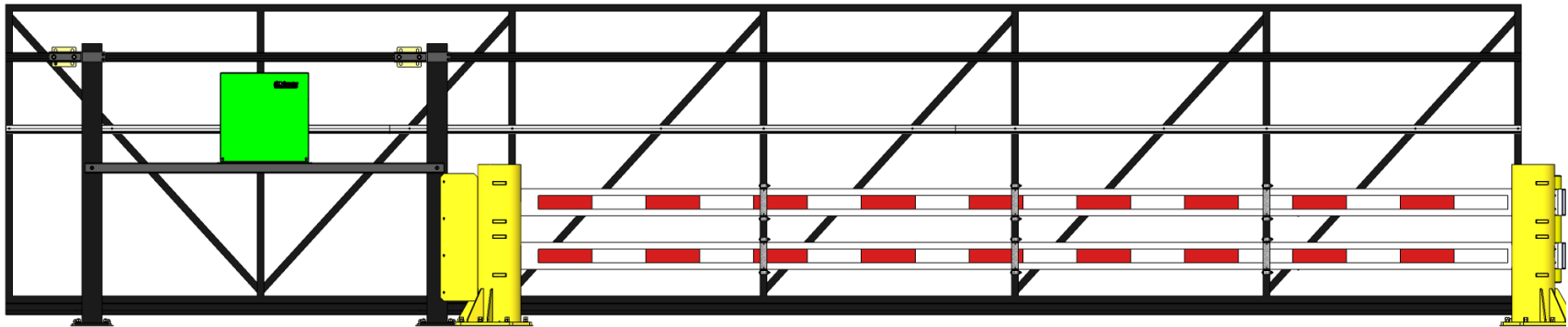
†† Ratings: ASTM F2656-20 M50-P2 Contact HySecurity to receive a copy of the Test Certification.



Designed with StrongArm® and SlideDriver™ DNA

The StrongSlide M30/M50 uses similar materials and design for the vehicle arrestor as the proven StrongArm M30/M50.

As the premium slide gate operator in the industry, StrongSlide is operated exclusively by SlideDriver™ II to provide reliability commensurate with the needs of an HVM slide gate.



Additional features

Bottom track cantilever gate

Superior gate mechanics, easier to install, and designed for a service life of 500,000 cycles.**

StrongArm vehicle arrestor technology

Light weight arrestor keeps the overall weight of gate down, reducing wear and improving reliability and service life.

Pre-aligned installation template

Error-proofs and simplifies installation for lower overall cost.

Side-mounted top track

Vertical stabilizer system uses roller element guides in side-mounted track to provide safety, improve performance in windy conditions, and assures alignment at close limit.

Bolt down design

All attachment points are cast in concrete, and both the gate and arrestor structures are bolted down. This simplifies the installation and assures proper alignment.

Concrete filled catch bollards

These posts capture the arrestor during an impact and double as bollards to protect the gate, operator, and fence.

Versatile infill options

A wide array of infill options for any architectural or design need. Constructed from powder coated steel for years of carefree service.

Designed with SlideDriver II in mind

Industry leading SlideDriver II gate operator bolts down to an elevated custom built platform, making it perfectly positioned to power the gate. SlideDriver II Model SD50F will close a 12ft clear opening the gate in only about 8 seconds in emergencies.

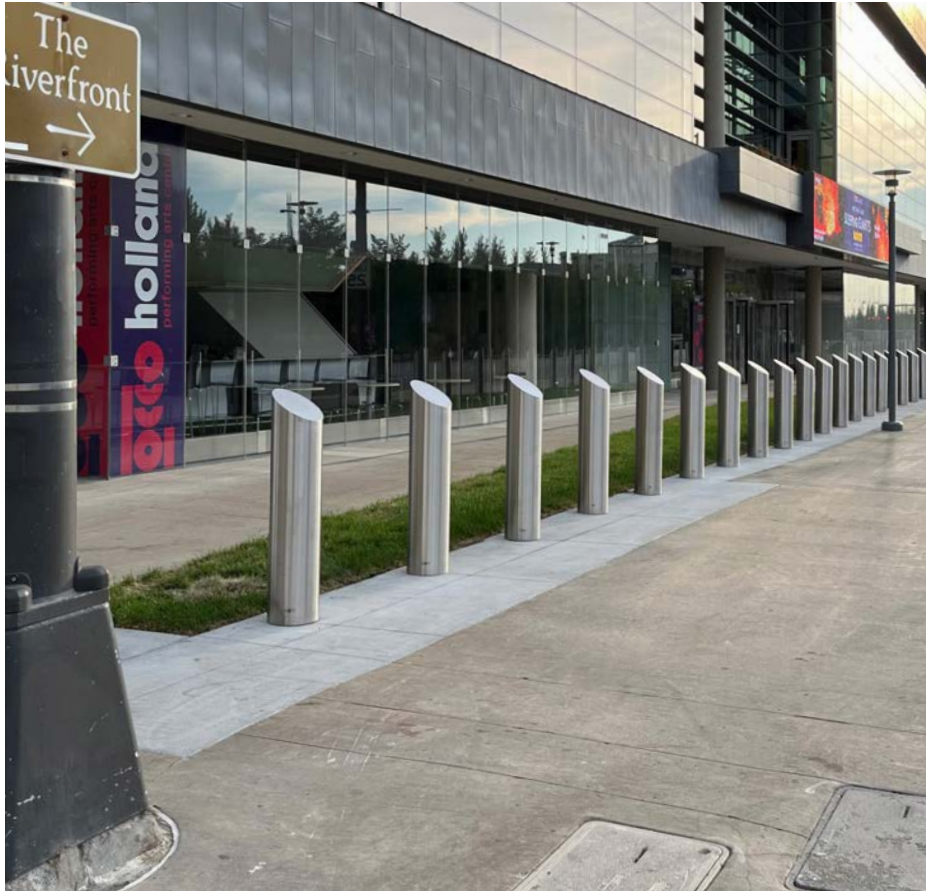


Bollards

Bollards M30/M50.....18

Bollards M30/M50

HySecurity offers a range of bollards solutions including shallow and deep mount, lighted and unlighted and decorative sleeve covers. Contact HySecurity to discuss your unique needs.



Shallow Foundations: Faster installation and sits above utilities and groundwater.



Deep Foundations: Smaller footprint and flexible foundation design.



M30 and M50 Solutions: Protection to meet your needs and the right size for the application.





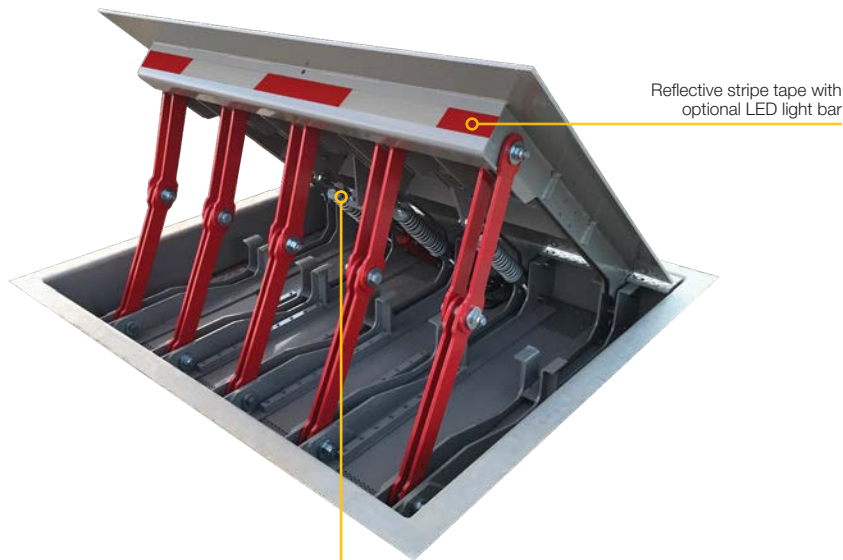


Vehicle Barrier Wedge

HydraWedge™ SM50.....	21
HydraWedge SM50 Technical Specifications.....	22
HydraWedge SM50 Models.....	23
HydraWedge SM50 Installed Options	24
HydraWedge SM50 Accessories.....	25
 WedgeSmart™ DC	26
WedgeSmart DC Technical Specifications.....	27
WedgeSmart DC Models.....	28
WedgeSmart DC Installed Options	29
WedgeSmart DC Accessories	30
 Parts and accessories for WedgeSmart DC	31

HydraWedge™ SM50

Seamless, fast-opening in ground security. Shallow foundation wedge features HySecurity hydraulic power and controls. This high-cycle, vehicle wedge barrier has three domestic and international crash certifications.



Reflective stripe tape with optional LED light bar

Spring counterbalance increases speed and reduces motor HP requirement and maintenance



Rating: Zero-penetration, crash-rated wedge barrier*.



Reliable: Long-life, low-maintenance wedge with optional UPS backup providing hundreds of cycles after power loss.



Programmable: Customized, configurable settings for site specific requirements.



Fast: Open times in as little as one second provide high cycle, fast throughput for managing traffic and maintain high security.



Troubleshooting: Easy system troubleshooting with onboard event log.



Installation ††: Fast installation, small footprint and foundation using 12 inch shallow mount design and minimal rebar.



Made in USA: Designed, tested and built within USA from globally secured materials.



HydraWedge SM50 Technical Specifications

Model	HydraWedge SM50	HydraWedge SM50 UPS	HydraWedge SM50 Twin	HydraWedge SM50 Twin UPS
Crash Certified	Domestic ASTM F2656-15 M50-P1 and international IWA 14-1 V/7200[N3C]/80/90:0.0 and PAS68 V/7500[N3]/80/90:0.0/20.7 with no penetration † †			
Duty Cycle	300 cycles/hr		400 cycles/hr divided between 2 wedges	
Horsepower	2 hp		5 hp	4 hp
Drive	Hydraulic			
Open/Close Time	3-4 seconds			
Emergency Fast Operate	1 second			
Manual Operation	Hand pump (standard)			
Wedge Design	Plate width: 2, 2.5, 3, 3.5, 4 m* (6.5, 8, 10, 11.5, 13 ft); Plate height (raised): 1000 mm (3.3 ft); Excavation width: Plate width + 700 mm (27.5 inch); Excavation length: 3.7 m (12 ft); Excavation depth:** 300 mm (1 ft)			
Wheel Load	44,000 lb axle load rating; 22,000 lb wheel load			
UPS Battery Backup Cycles	Standard model generates multiple cycles from fully charged accumulator.	DC Power Supply w/HyCharger DC™ provides hundreds of cycles after AC power loss.***	Standard model generates multiple cycles from fully charged accumulator.	DC Power Supply w/HyCharger DC™ provides hundreds of cycles after AC power loss.***
Backup Cycles	4 cycles: 2.5 gallons accumulator	Hundreds of UPS cycles.	4 cycles: 2.5 gallons accumulator	Hundreds of UPS cycles.
Temperature Rating	-40° to 158° F (-40° to 70° C) or -10° to 158° F (-23° to 70° C) HySecurity specified biodegradable fluid			
Input Voltage	115V or 208-230V 50/60Hz			
Single Phase Voltages	208-230V 60Hz,220V 50Hz*	208-230V 60Hz,220V 50Hz*, 115V 60/50Hz 23A† or 208-230V 60/50Hz 11.5A. Choose voltage with care as chargers are not field convertible.	230V 60Hz,220V 50Hz*	115V 50/60Hz 23A† or 208-230V 50/60Hz 11.5A. Choose voltage with care as chargers are not field convertible
Three Phase Voltages	208-230/460V 60Hz,220/380/440V 50Hz***	N/A	208-230/460V 60Hz,220/380/440V 50Hz***	N/A
Batteries	Two 8Ah batteries maintain low voltage to the controls for 24 hours after AC power loss	Two 110 Ah batteries located in separate DC UPS enclosure	Two 8Ah batteries maintain low voltage to the controls for 24 hours after AC power loss	Two 110Ah batteries located in the DC UPS enclosure
Communication	RS-232, RS-485			
User Controls	Smart Touch Controller with 70+ configurable settings. Smart Touch keypad and 32 character, OLED display or a PC using S.T.A.R.T. software.			
Relays	Three configurable user relays: one 30VDC, 3A solid state and two 250VAC, 10A electromechanical. Optional Hy8Relay™ for 8 additional relay outputs.			
Enclosure	HydraSupply XL: Type 3R, 91w x 122h x 41d cm (36w x 48h x 16d inch), optional NEMA 4X	HydraSupply XL: Type 3R, 91w x 122h x 41d cm (36w x 48h x 16d inch), optional NEMA 4X; DC Power Supply: Type 3R, 76w x 76h x 30d cm (30w x 30h x12d inch)	HydraSupply XL: Type 3R, 91w x 122h x 41d cm (36w x 48h x 16d inch), optional NEMA 4X	HydraSupply XL: Type 3R, 91w x 122h x 41d cm (36w x 48h x 16d inch), optional NEMA 4X; DC Power Supply: Type 3R, 76w x 76h x 30d cm (30w x 30h x12d inch)
Finish	Stone gray powder coated, 2,000 hr salt spray tested			
Foundation	Less than 300 mm** (1 ft) concrete depth all widths up to 4.15 m (13.5 ft); less than 218 kg (480 lb) rebar; less than 3.1 m3 (4 cu yds) concrete		Less than 300 mm** (1 ft) concrete depth all widths up to 4.15 m (13.5 ft); less than 218 kg (480 lb) rebar; less than 3.1 m3 (4 cu yds) concrete (per wedge)	
ETL Listed (UL 325)	Control panel certified to UL 508A by ETL			
Warranty	5 year warranty on electronics and hydraulics w/product registration. 2 year warranty on mechanical wedge.			

* Wedge manufactured in metric scale. Use for precision measurements. All imperial measurements rounded to nearest 1/2 ft.

† 115 input requires 30A branch circuit.


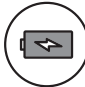



†† Ratings: ASTM F2656-15 M50-P1 IWA14- 1: 2013 PAS 68: 2013. Contact HySecurity to receive a copy of the ASTM F2656-15 M50-P1 Test Certification.

** 300 mm excavation: 200 mm reinforcing concrete + 100 mm roadway surface of any material

***The operators normal duty cycle and the actual number of combined cycles available from batteries depends upon wedge plate weight, number of batteries, state of charge and health, ambient temperature, accessory power draw and frequency of gate cycles during power outage.

HydraWedge SM50 Models

Solution	Models	Component Part Numbers	Weight	Dimensions	Freight Class
HydraWedge SM50	HydraWedge SM50 Wedge HydraSupply XL, Power Unit	S-HYW-1-L1 S-HXL-1-K1	See Options 500 lb	See Options 44"w x 27"d x 58"h	70 70
HydraWedge SM50 UPS	HydraWedge SM50 UPS HydraSupply XL, DC Power Unit DC Power Supply 120	S-HYW-1-L1 S-HXL-1-K6 DCPS-120	See Options 500 lb 335 lb	See Options 44"w x 27"d x 58"h 39"w x 28"d x 39"h	70 70 70
HydraWedge SM50 Twin	HydraWedge SM50 HydraSupply XL, Twin Power Unit	S-HYW-1-L1 S-HXL-1-K2	See Options 500 lb	See Options 44"w x 27"d x 58"h	70 70
HydraWedge SM50 Twin UPS	HydraWedge SM50 HydraSupply XL, Twin UPS Power Unit DC Power Supply 150	S-HYW-1-L1 S-HXL-1-K7 DCPS-150	Contact HySecurity 500 lb 335 lb	Contact HySecurity 44"w x 27"d x 58"h 39"w x 28"d x 39"h	70 70 70

	<p>Secure and fast wedge opens and closes in 3 to 4 seconds and is rated for 300 cycles/hour usage.</p> <p>Up to 4 accumulator cycles after AC power loss. Two 8Ah batteries maintain low voltage to the controls for 24 hours after AC power loss for normal limited operation on accumulator.</p>		<p>DC Power Supply (UPS models only) provides hundreds of UPS backup cycles after AC power loss.*** The DC Power Supply is a separate insulated and ventilated enclosure containing two sealed maintenance free AGM 110Ah, 12VDC batteries. Available in single phase only.</p> <p>Low voltage: 115V 50/60Hz (requires 30A branch circuit), or High voltage: 208-230V 50/60Hz (requires 15A branch circuit). Be certain to order the correct DC Power Supply voltage model as chargers are not field convertible.</p>
	<p>The HydraSupply XL™ enclosure contains the Smart Touch Controller and hydraulic power unit.</p> <p>The powder coated steel chassis passed a 2,000 hour salt spray test providing optimum corrosion protection. Shallow wedge mount, minimal rebar and low concrete volume significantly reduces install effort, time and total cost. Hand pump for manual operation. Optional fitted safety skirt and LED light bar available.</p>		<p>Only HySecurity authorized distributors and installers, trained or authorized by HySecurity in proper installation techniques, operation and maintenance, are eligible to purchase HySecurity crash-rated barrier products. Training is periodically available and is required prior to the actual purchase or to receive crash-rated project installation leads and referrals from HySecurity.</p> <p>See installed options for more shipping information.</p>
	<p>Twin models for side by side or dual lane applications. Wedges can be synchronous or asynchronous operation. Reduce cost of operator and installation with only one power unit and one control unit for the twin barriers. Simplifies wiring and installation. Rated for 400 cycles/hour usage divided between two wedges. Up to 4 accumulator backup cycles, either normal or EFO, divided between two wedges on AC models. UPS models provide up to 4 accumulator backup cycles, divided between two wedges, after AC and DC power loss.</p> <p>Twin wedge operator price includes up to 150 ft (45.7 m) of 3/8 inch hydraulic hose (custom cut to size by HySecurity according to installer's field measurements). Hoses are pre-filled with hydraulic fluid and supplied with quick disconnects. Submit completed and signed operator and hose order forms with each order.</p>		

HydraWedge SM50 Installed Options

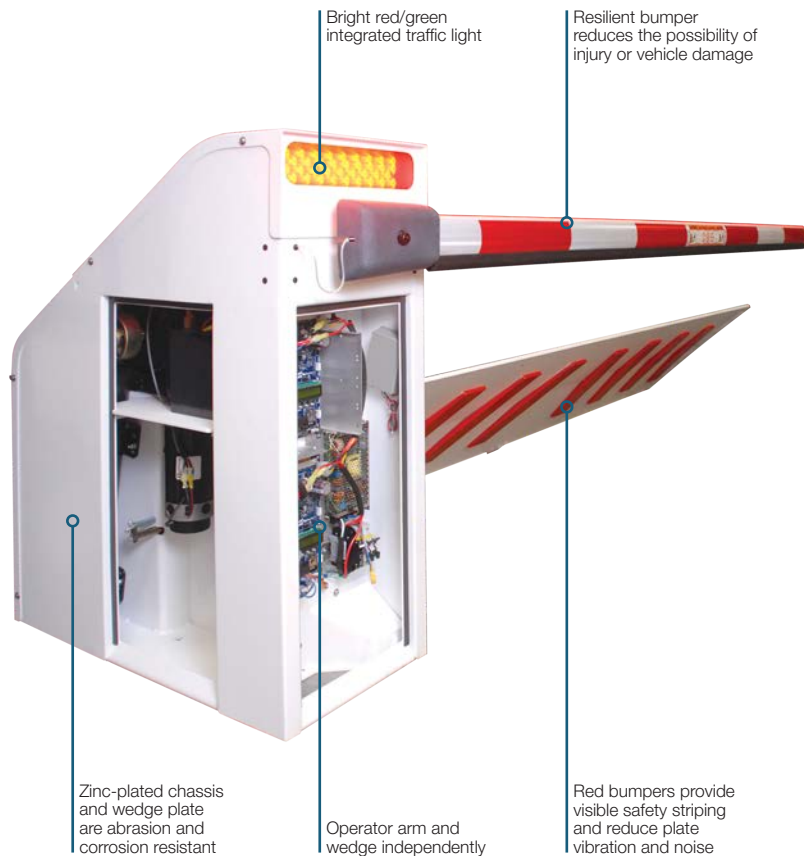
Name	Order code	Description
Color, Custom, HydraWedge SM50	S-HYW-5-G6	Custom chevron striping on top of wedge plate, two part epoxy texture finish coating applied over the standard finish. Creates a durable anti-slip finish.
Crate, Export Shipping, DC Power Supply	S-DCP-B-01	Certified heat treated wood crate for export shipping, DC Power Supply.
Crate, Export Shipping, HydraSupply XL	S-HXL-B-01	Certified heat treated wood crate for export shipping, HydraSupply XL.
Heater, 230VAC, HydraSupply XL	S-HXL-6-06	Heater with thermostat, 208-230VAC, HydraSupply XL.
Heater, 460VAC, HydraSupply XL	S-HXL-6-10	Heater with thermostat, 460VAC, HydraSupply XL.
Plate, 2 m	S-HYW-E-40	Complete HydraWedge SM50 assembly, 2 meter (6.5 ft) plate width. Shipping Dimensions: 88"w x 83"d x 18"h; Est Ship Weight: 3600 lbs.
Plate, 2.5 m	S-HYW-E-42	Complete HydraWedge SM50 assembly, 2.5 meter (8 ft) plate width. Shipping Dimensions: 108"w x 83"d x 18"h; Est Ship Weight: 3875 lbs.
Plate, 3 m	S-HYW-E-44	Complete HydraWedge SM50 assembly, 3 meter (10 ft) plate width. Shipping Dimensions: 128"w x 83"d x 18"h; Est Ship Weight: 4150 lbs.
Plate, 3.5 m	S-HYW-E-46	Complete HydraWedge SM50 assembly, 3.5 meter (11.5 ft) plate width. Shipping Dimensions: 148"w x 83"d x 18"h; Est Ship Weight: 4425 lbs.
Plate, 4 m	S-HYW-E-48	Complete HydraWedge SM50 assembly, 4 meter (13 ft) plate width. Shipping Dimensions: 168"w x 83"d x 18"h; Est Ship Weight: 4700 lbs.
Radio receiver, Single Channel, Open, XL	S-HXL-9-00	Single channel receiver and coax antenna, wired for open control only.
Wedge Skirt 2 m, Red	S-HYW-F-40	Wedge skirt, 2m width, red.
Wedge Skirt 2.5 m, Red	S-HYW-F-42	Wedge skirt, 2.5m width, red.
Wedge Skirt 3 m, Red	S-HYW-F-44	Wedge skirt, 3m width, red.
Wedge Skirt 3.5 m, Red	S-HYW-F-46	Wedge skirt, 3.5m width, red.
Wedge Skirt 4 m, Red	S-HYW-F-48	Wedge skirt, 4m width, red.

HydaWedge SM50 Accessories

Name	Part Number	Description
Cable, Smart Touch Controller	MX4138	Download cable with USB to RS-232 adapter, 6 ft, connects laptop to Smart Touch Controller, use with Smart Touch Analyze and Retrieve Tool (S.T.A.R.T.).
Detector, Vehicle, Hy5B™ 2.0	MX4621	Improved loop detector module with digital interface to SmartCNX and all other HySecurity controllers. Automatically sets sensitivity. Automatically compensates for gate movement. Advanced loop diagnostics.
Heater Kit, 230VAC	MX001110	Heater kit with thermostat, 208/230VAC for StrongArm, SwingRiser, HydraLift, HydraSwing, HydraWedge.
Heater Kit, 460VAC	MX001111	Heater kit with thermostat, 460VAC, includes relay contactor, for SwingRiser, HydraLift, HydraSwing, HydraWedge.
Heater Thermostat	MX001875	Thermostat for heater, on at 40° F, includes bracket.
Keypad, Smart Touch Controller	MX3399	5 button Smart Touch Controller keypad with 2 LED indicators only compatible with OLED display boards. Retrofit kit MX3542 required for retrofitting older keypads.
Noise Isolator	MX001162	Open/Close/Stop noise/lightning isolator (long distance module).
Paint Pen, Grey	MX000129	Paint Pen for touch up on Hoffman grey DC Power Supply and HydraSupply, 0.5 fl oz.
Photo Eye Kit, Reflective, 40 ft, 24VDC	MX000999	Reflective photo eye kit, 40 ft range, AC or 24VDC, includes reflector, mounting bracket and hardware.
Push Button Station, 2 Button	MX001180	Push button station, 2 button, open/close (NEMA 1).
Push Button Station, 3 Button	MX001174	Push button control station, 3 button, open/close/stop (NEMA 1).
Receiver, Remote, Antenna and Coax Cable	MCS106603	Antenna and coax cable for single and dual channel receiver.
Receiver, Remote, Single Channel	MCS109950	Remote receiver, 1 channel, 300MHz, includes antenna and 3 ft cable.
Relay Module, Hy8Relay™, Smart Touch	MX3307-02	Extended Hy8Relay module provides 8 additional programmable relay outputs for Smart Touch operators.
Relay, 90-280VDC, Solid State	MX002895	90-280VDC solid state relay.
Signs, Moving Gate Warning, English	MX3193-01	Two UL 325 moving gate warning signs, English, 8.5 x 11 inch aluminum, includes 8 zip ties.
Timer, Clock, 7 day, 24 hour	MX001307	7 day 24 hour Clock Timer.
Transmitter, Remote, 1 Button	MCS308911	Linear Megacode™ transmitter, 1 button, 300MHz.
Transmitter, Remote, 2 Button	MCS412001	Linear Megacode™ transmitter, 2 button, 300MHz.
Pole mounted traffic signal	MX5463-01	Traffic signal and pole, free standing, black Aluminum

WedgeSmart™ DC

Security plus traffic control in one. Electromechanical wedge and integrated barrier arm, engineered to stop passenger vehicles.



Arm size: Configurations to support lane widths of 9, 10, 12, or 14 ft.



Programmable: Customized, configurable settings for site specific requirements.



Reliable: Operates for up to 150 cycles after AC power loss with optional UPS backup*.



Visible: Integrated lighting for safety.



Options: Straight or articulated arm.



Efficient: Independently operated barrier arm for high traffic periods.



Safety: Breakaway, stop motion arm protects people and property in case of vehicle strike.



Installation: Surface mount - Easy, quick installation.



Made in USA: Designed, tested and built within USA from globally sourced materials.






WedgeSmart DC Technical Specifications

Model	WedgeSmart DC
Full Open Angle	Arm full open angle: Adjustable 90° ± 10°
Lane Width	9, 10, 12 and 14 ft (2.7, 3, 3.7, 4.3 m)
Lane Widths	9, 10, 12, 14 ft (2.7, 3, 3.7, 4.3 m)
Duty Cycle	Continuous
Drive	Electromechanical
Open/Close Time	5 seconds up / 5 seconds down
UPS Battery Backup Cycles	Two 12V, 50Ah batteries, Operates for over 150 cycles after AC power loss.* Field configurable to fail open or secure if batteries deplete.
Temperature Rating	-13° to 158° F (-25° to 70° C) No operator heater necessary. Concrete pad heater recommended under wedge plate in freezing climates.
Operating Voltage	24VDC
Input Voltage	115VAC, 3A, 60/50Hz or 208-230VAC, 1.5A, 60/50Hz
Accessory Power	12VDC and 24VDC 1A each
Communication	USB, RS-232, RS-485
User Controls	Smart DC Controller with 70+ configurable settings. 32 character LCD display and 5 tact buttons or a PC using S.T.A.R.T. software.
Relays	Two configurable user relays: 30VDC, 3A solid state and 250VAC, 10A electromechanical; Optional Hy8Relay™ for 8 additional relay outputs
Finish	Zinc plated with white powder coating
Foundation	To achieve ASTM F2656 rating, 3000 psi flat concrete required. 10 inch min. at anchor strap area. 6 inch min. all other areas. Area under chassis and wedge plate must be flat within 1/4 inch over entire length.
ETL Listed (UL 325)	Control panel certified to UL 508A by ETL
Warranty	2 years w/product registration

* Engineered - No crash testing performed; speed rating assigned per technical specifications; penetration rating undetermined

WedgeSmart DC Models

Solution	Models	Component Part Numbers	Weight	Dimensions	Freight Class
WedgeSmart DC	WedgeSmart DC	S-WSD-1-G1	500 lb	25"w x 52"d x 42"h	70

	<p>Crash-engineered to ASTM F2656 SC40 (small car at 40 mph) and FS30 (full size sedan at 30 mph).</p> <p>Safety features include integrated bright red/green traffic light and aluminum barrier arm with highly visible LED lights across top of arm, decreasing likelihood of vehicle strike. Resilient bumper along base of arm reduces possibility of injury or vehicle damage. Kill switch stops arm motion when hit, protecting pedestrians, facility, operator/arm. Use HySecurity articulating arms for site clearance issues such as underground parking garages.</p>		<p>Rear mounted traffic light available for bi-directional traffic sites. Optional battery mount kit relocates batteries to rear of chassis if side door is obstructed against a wall.</p> <p>UPS battery backup operates for over 150 cycles after AC power loss.* Field configurable to fail open or secure when batteries deplete. A HySecurity designed intelligent three stage charging system monitors battery condition to maximize battery life.</p>
	<p>Wedge plate comes in 9, 10, 12 and 14 ft widths with 5 seconds up/5 seconds down Open/Close time. Adaptive IES (inherent entrapment sensor) optimizes gate resistance sensitivity and reduces false trips and unnecessary call backs. Chassis and wedge plate are zinc-plated with white powder coating for excellent abrasion and corrosion resistance and an enduring, attractive finish. Wedge plate has non-slip surface on top and red urethane bumpers below providing highly visible safety striping while reducing plate vibration and noise. Chassis template, threaded mounting studs and epoxy adhesive included with operator.</p>		

Note: CALL FOR QUOTE. Completed and signed WedgeSmart DC operator order form required.

WedgeSmart DC Installed Options

Name	Order code	Description
Arm Assembly, Aluminum, Oval, 9 ft	S-WSD-5-B1	9 ft oval aluminum oval arm for operators with kill switch built after June 2017. Includes LED light strip with UV stabilized cover and bumper. Shipping Dimensions: 6"w x 120"d x 6"h. Est Ship Weight: 22
Arm Assembly, Aluminum, Oval, 10 ft	S-WSD-5-B2	10 ft oval aluminum oval arm for operators with kill switch built after June 2017. Includes LED light strip with UV stabilized cover and bumper. Shipping Dimensions: 6"w x 132"d x 6"h. Est Ship Weight: 25
Arm Assembly, Articulating, 7 ft Vehicle Clearance	S-WSD-5-B5	Articulating arm assembly with bumper and bracket. Vehicle clearance from base of operator to bottom bumper side of arm is 7 ft. Overhead height (total) is 7.5 ft. Overall arm (lane) length is 8 ft. Shipping Dimensions: 6"w x 96"d x 6"h. Est Ship Weight: 20
Arm Assembly, Articulating, 8 ft Vehicle Clearance	S-WSD-5-B3	Articulating arm assembly with bumper and bracket. Vehicle clearance from base of operator to bottom bumper side of arm is 8 ft. Overhead height (total) is 8.5 ft. Overall arm (lane) length is 10 ft. Shipping Dimensions: 6"w x 108"d x 6"h. Est Ship Weight: 20
Arm Assembly, Articulating, 9 ft Vehicle Clearance	S-WSD-5-B4	Articulating arm assembly with bumper and bracket. Vehicle clearance from base of operator to bottom bumper side of arm is 9 ft. Overhead height (total) is 9.5 ft. Overall arm (lane) length is 10 ft. Shipping Dimensions: 6"w x 120"d x 6"h. Est Ship Weight: 25
Configuration, Left Handing, WedgeSmart DC	S-WSD-4-01	WedgeSmart DC Operator standard configuration for left handing.
Configuration, Right Handing, WedgeSmart DC	S-WSD-4-02	WedgeSmart DC Operator configured for right handing.
Light, Rear Mount, WedgeSmart DC	S-WSD-D-01	Rear mounted red/green traffic light for bidirectional traffic.
Wedge Plate Assembly, 9 ft, LH	S-WSD-E-01	WedgeSmart DC 9 ft, configured for left handing. Shipping Dimensions: 109"w x 38"d x 14"h. Est Ship Weight: 681
Wedge Plate Assembly, 9 ft, RH	S-WSD-E-06	WedgeSmart DC 9 ft, configured for right handing. Shipping Dimensions: 109"w x 38"d x 14"h. Est Ship Weight: 681
Wedge Plate Assembly, 10 ft, LH	S-WSD-E-02	WedgeSmart DC 10 ft, configured for left handing. Shipping Dimensions: 121"w x 38"d x 14"h. Est Ship Weight: 754.
Wedge Plate Assembly, 10 ft, RH	S-WSD-E-07	WedgeSmart DC 10 ft, configured for right handing. Shipping Dimensions: 121"w x 38"d x 14"h. Est Ship Weight: 754
Wedge Plate Assembly, 12 ft, LH	S-WSD-E-03	WedgeSmart DC 12 ft, configured for left handing. Shipping Dimensions: 145"w x 33"d x 14"h. Est Ship Weight: 801
Wedge Plate Assembly, 12 ft, RH	S-WSD-E-08	WedgeSmart DC 12 ft, configured for right handing. Shipping Dimensions: 145"w x 33"d x 14"h. Est Ship Weight: 801
Wedge Plate Assembly, 14 ft, LH	S-WSD-E-04	WedgeSmart DC 14 ft, configured for left handing. Shipping Dimensions: 169"w x 33"d x 14"h. Est Ship Weight: 951
Wedge Plate Assembly, 14 ft, RH	S-WSD-E-09	WedgeSmart DC 14 ft, configured for right handing. Shipping Dimensions: 169"w x 33"d x 14"h. Est Ship Weight: 951

WedgeSmart DC Accessories

Name	Part Number	Description
Anchors and Epoxy Kit	MX3460	Anchors, fasteners, epoxy, and nozzle for mounting chassis and wedge plate.
Arm Assembly, Aluminum, Oval, 9 ft	MX4182-09	9 ft oval aluminum oval arm for operators with kill switch built after June 2017. Includes LED light strip with UV stabilized cover and bumper. StrongArmPark DC, WedgeSmart DC.
Arm Assembly, Aluminum, Oval, 10 ft	MX4182-10	10 ft oval aluminum oval arm for operators with kill switch built after June 2017. Includes LED light strip with UV stabilized cover and bumper. StrongArmPark DC, WedgeSmart DC and StrongArm 14F operators.
Arm Assembly, Articulating, 7 ft Vehicle Clearance	MX3114-07	Articulating arm assembly with bumper and bracket. Vehicle clearance from base of operator to bottom bumper side of arm is 7 ft. Overhead height (total) is 7.5 ft. Overall arm (lane) length is 8 ft.
Arm Assembly, Articulating, 8 ft Vehicle Clearance	MX3114-03	Articulating arm assembly with bumper and bracket. Vehicle clearance from base of operator to bottom bumper side of arm is 8 ft. Overhead height (total) is 8.5 ft. Overall arm (lane) length is 10 ft.
Arm Assembly, Articulating, 9 ft Vehicle Clearance	MX3114-04	Articulating arm assembly with bumper and bracket. Vehicle clearance from base of operator to bottom bumper side of arm is 9 ft. Overhead height (total) is 9.5 ft. Overall arm (lane) length is 10 ft.
Arm Assembly, Articulating, Lighted, 7 ft Vehicle Clearance	MX4010-07	Articulating arm assembly includes LED light strip with UV stabilized cover and bumper. Vehicle clearance from base of operator to bottom bumper side of arm is 7 ft. Overhead height (total) is 7.5 ft. Overall arm (lane) length is 8 ft.
Arm Assembly, Articulating, Lighted, 8 ft Vehicle Clearance	MX4010-03	Articulating arm assembly includes LED light strip with UV stabilized cover and bumper. Vehicle clearance from base of operator to bottom bumper side of arm is 8 ft. Overhead height (total) is 8.5 ft. Overall arm (lane) length is 10 ft.
Arm Assembly, Articulating, Lighted, 9 ft Vehicle Clearance	MX4010-04	Articulating arm assembly includes LED light strip with UV stabilized cover and bumper. Vehicle clearance from base of operator to bottom bumper side of arm is 9 ft. Overhead height (total) is 9.5 ft. Overall arm (lane) length is 10 ft.
Battery Kit, 50Ah, Replacement	MX002013	Two 12V, 50Ah batteries for optional extended battery backup kit.
Battery Mount Kit	MX3900	Battery mount kit for WedgeSmart DC relocates batteries to rear of chassis if side door is obstructed against a wall.
Beacon, Strobe, Amber, 24VDC	MX000997	24VDC Amber Beacon Strobe.
Bracket, Breakaway Arm Assembly	MX3680	HyProtect™ breakaway arm bracket and mount (MX3557). No kill switch or harness.
Bracket, Breakaway Arm w/Kill Switch Kit	MX4050	HyProtect™ breakaway arm bracket with kill switch and harness. Kill switch prevents barrier arm operation after arm strike. StrongArmPark DC and WedgeSmart DC.
Detector, Vehicle, Hy5B™ 2.0	MX4621	Improved loop detector module with digital interface to SmartCNX and all other HySecurity controllers. Automatically sets sensitivity. Automatically compensates for gate movement. Advanced loop diagnostics.
Light, Rear Mount, WedgeSmart DC	MX3805	Rear mounted red/green traffic light assembly for bidirectional traffic.
Noise Isolator	MX001162	Open/Close/Stop noise/lightning isolator (long distance module).
Photo Eye Kit, Reflective, 40 ft, 24VDC	MX000999	Reflective photo eye kit, 40 ft range, AC or 24VDC, includes reflector, mounting bracket and hardware.
Photo Eye, Through Beam, 65 ft	MX5972-01	Through beam photo eye with integrated hood. Includes mounting hardware.
Push Button Station, 2 Button	MX001180	Push button station, 2 button, open/close (NEMA 1).
Push Button Station, 3 Button	MX001174	Push button control station, 3 button, open/close/stop (NEMA 1).
Receiver, Remote, Antenna and Coax Cable	MCS106603	Antenna and coax cable for single and dual channel receiver.
Receiver, Remote, Single Channel	MCS109950	Linear Megacode™ receiver, 1 channel, 300MHz, includes antenna and 3 ft cable.
Relay Module, Hy8Relay, Smart DC	MX3307-01	Extended Hy8Relay module provides 8 additional programmable relay outputs for Smart DC operators.
Strap, Lifting, Kit	MX3700	Lifting straps, connector links, and eyebolts for lifting/maneuvering the chassis and wedge plate assembly during installation.
Tape, Anti-Slip Replacement Kit	MX3698	Includes 5 left hand and 5 right hand cut tape sections for anti-slip top of wedge plate.
Template, WedgeSmart DC Chassis	MX3536	Template is for locating chassis mounting holes during installation. Template lives as an anti-corrosion spacer between chassis and concrete.

WedgeSmart DC Accessories

Name	Part Number	Description
Timer, Clock, 7 day, 24 hour	MX001307	7 day 24 hour Clock Timer.
Transmitter, Remote, 1 Button	MCS308911	Linear Megacode™ transmitter, 1 button, 300MHz.
Transmitter, Remote, 2 Button	MCS412001	Linear Megacode™ transmitter, 2 button, 300MHz.

Parts and accessories for WedgeSmart DC

Just a few of the many accessories available. See operator parts section for more.



OVAL ALUMINUM ARM



ARTICULATING ARM



HY5B™ VEHICLE DETECTOR



CLOCK TIMER



REAR MOUNT TRAFFIC LIGHT



PHOTO EYE KITS



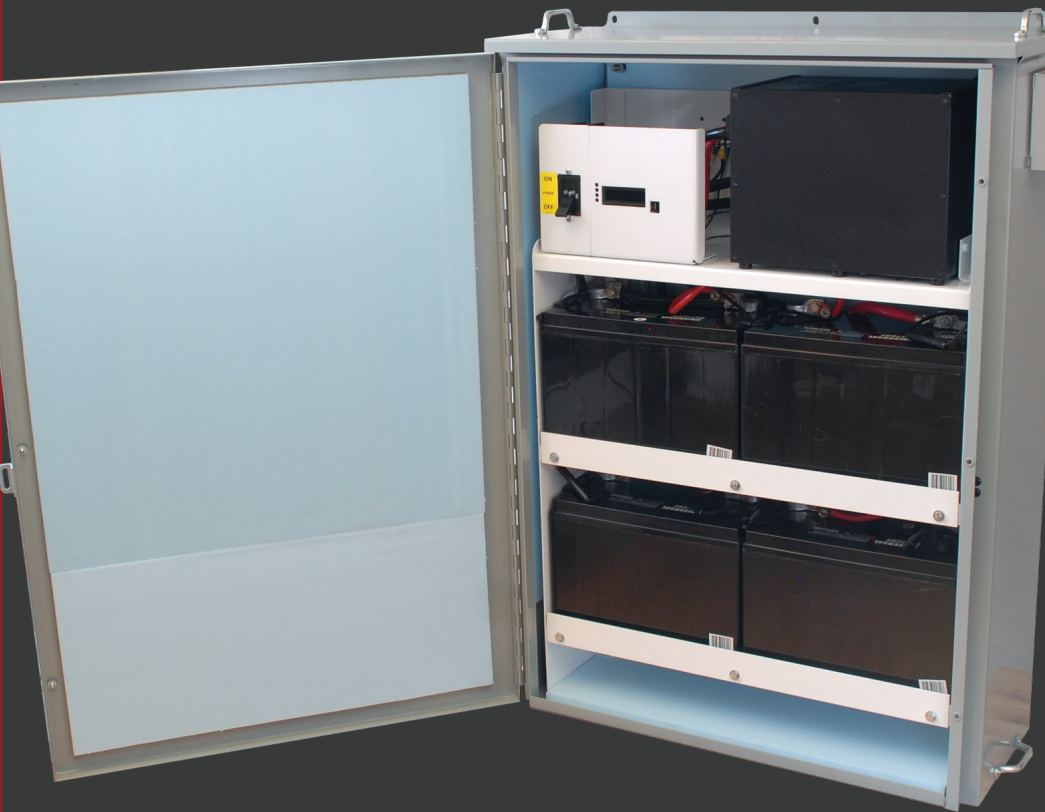
RADIO RECEIVERS & TRANSMITTERS



HY8RELAY™



BATTERY MOUNT KIT - REAR OF CHASSIS



Power Supply

AC Power Supply with HyInverter™ AC33

AC Power Supply with HyInverter AC Technical Specifications34

AC Power Supply w/HyInverter AC Models34

DC Power Supply with HyCharger™35

DC Power Supply with HyCharger Technical Specifications.....36

DC Power Supply with HyCharger Models.....37

DC Power Supply with Installed Options.....37

HydraSupply XL™38

HydraSupply XL Technical Specifications39

HydraSupply XL Models.....40

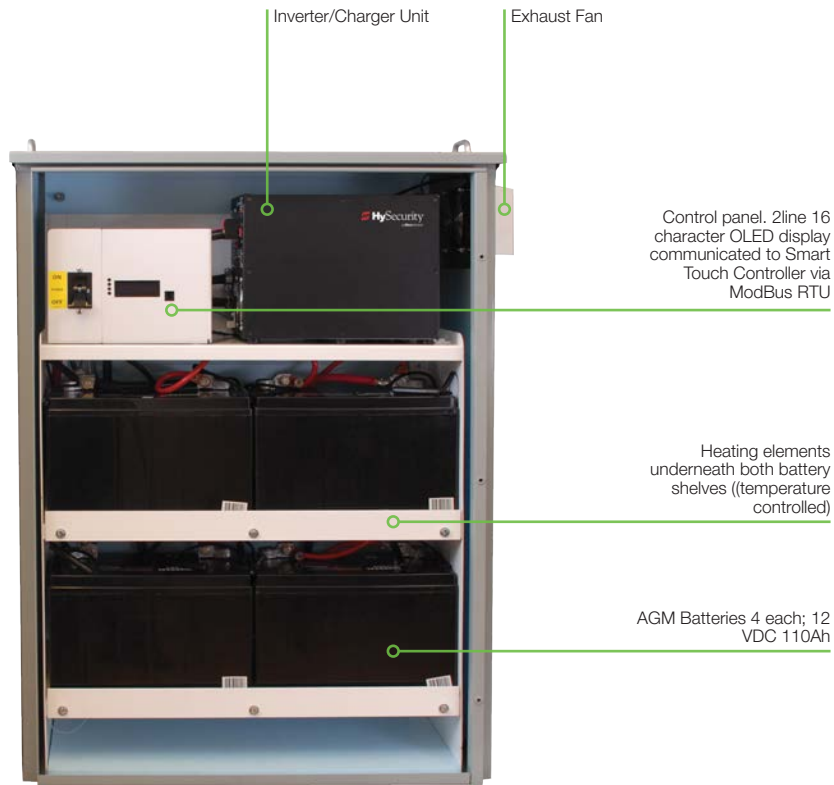
HydraSupply XL Installed Options40

HydraSupply XL Accessories41

HVM Product Accessories.....42

AC Power Supply with HyInverter™ AC

Trusted value, rugged performance. Easy to install, easy to operate direct drive gate opener.



Quick: Quick power transfer; occurs in 1/2 AC cycle.



UPS: VFD models up to 2 hp now have the option for true Uninterruptible Power Supply (UPS).



Installation: May be installed anywhere on the branch circuit from panel to protected device.



Sine Wave: Pure sine wave output.



Soft-start: May be used with 1hp-2hp motor driven equipment equipped with soft-start controllers.



Resistive: May be used with resistive loads up to 3,000 Watts.



AC Power Supply with HyInverter AC Technical Specifications

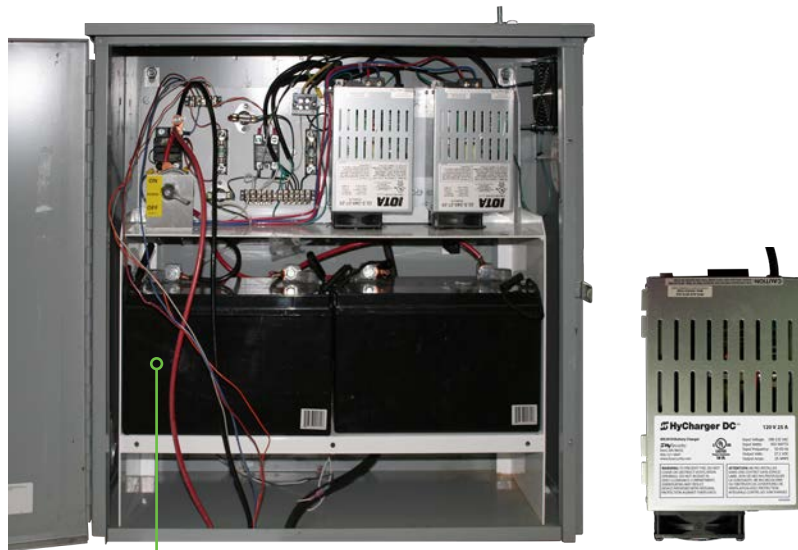
Model	AC Power Supply w/HyInverter AC
Operators	HydraSwing; SlideDriver (15, 40, 50VF2/3), SlideDriver II (SD15, SD40, SD50F, SD80V) StrongArm; StrongArm M30/M50; SwingRiser (single leaf models)
Duty Cycle	See operator
Horsepower	1 hp, or up to 2 hp HySecurity operators with Variable Frequency Drive (VFD) controller
Temperature Rating	-40° to 122° F (-40° to 50°C) Heater and fan automatically adjust cabinet temperature for optimal battery life
Input Voltage	208/230V 50/60Hz
Batteries	4 AGM batteries for extended cycles. 110Ah, 12VDC each; 5200 Wh
Communication	Modbus RTU via RS-485
User Controls	Programmable with Smart Touch Controller or SmartTouch 720/725
Enclosure	NEMA 3R. Footman loops for lifting. Heater and fan automatically adjust cabinet temperature for optimal battery life.
ETL Listed (UL 325)	ETL Listed (UL 1778)
AC Loss Signal	Dry contact output to report power failure to gate operator (50mA, 0-36VDC)
Charger	Smart charge system conditions batteries
Humidity	5% to 95% relative humidity, non-condensing
Input Power	208/230VAC, single phase, 60/50Hz switch selectable
Output Power	230V 60Hz or 220V 50Hz, 3000VA
Recharge	Fast: Minimum 6 hour recharge; 12 hours for high cycle applications.
Retrofit	Easy. Same fit and finish as existing AC powered operator
Surge Power	6000VA, 10 seconds
Warranty	2 year (system and electronics), 1 year battery

AC Power Supply w/HyInverter AC Models

Solution	Models	Part Number	Weight	Dimensions	Freight Class
AC Power Supply w/HyInverter AC	AC Power Supply with HyInverter	ACP7201	50 lb	42"w x 48"d x 49"h	70
AC Power Supply w/HyInverter AC	AC Power Supply with HyInverter Ac, Packaged for Export	ACP7202	50 lb	42"w x 48"d x 49"h	70

DC Power Supply with HyCharger™

Advanced UPS Power Supply with HyCharger DC. Secure access under all conditions.



Redundant chargers
double reliability



Smart: Smart charge system uses high efficiency switching technology that optimizes battery conditioning, storage capacity and battery life.



Powerful: Supplies 50A of 24VDC power on continuous basis to both motor drive circuit or charger circuit. Burst mode supplies additional energy to gate operator, when needed.



Fast recharge: After AC power is restored, batteries are completely recharged in as little as 2 hours (12 hours when operating a high-traffic gate).



Adaptable: Easy replacement of existing, older DC chargers in HySecurity DC Supply Cabinets. If you are interested in replacing an older DC charger, contact HySecurity for replacement parts: MX2890-01 HyCharger DC 208/230V or MX2890-02 HyCharger DC 115V.**



DC Power Supply with HyCharger Technical Specifications


Model	DC Power Supply 60	DC Power Supply 120	DC Power Supply 150
Operators	SlideDriver II SD40DC, SD200VDC; StrongArm 14F UPS, 20 UPS, 28 UPS, 36 UPS; SwingRiser - All UPS models; HydraSupply XL UPS models.		
Horsepower	Works with up to 1hp rated operators	Works with up to 2hp rated operators	Works with up to 5hp rated operators
Temperature Rating	-40° to 158°F (-40° to 70°C) Heater & fan automatically adjust cabinet temperature for optimal battery life		
Single Phase Voltages	115† or 208-230V 50/60Hz Single Phase*		
Batteries	Two - 110Ah AGM batteries for extended cycles		
Enclosure	NEMA 3R with heater and fan		
ETL Listed	UL 325		
Burst Mode	Burst of power, when needed		
Charger	Smart charge system conditions battery		
Output Power	24V, 50A		
Recharge	Fast: Minimum 2 hour recharge; 12 hours for high cycle applications		
Warranty	2 year (system and electronics), 1 year battery		

* 115V DC Power Supply requires 30A branch circuit

PART NUMBER: MX2890-01 | MX2890-02

DC Power Supply with HyCharger Models

Solution	Models	Component Name	Part Number	Weight	Dimensions	Freight Class
DC Power Supply 60	DC Power Supply 60	DCPS-60	S-DCP-1-C0	335 lb	39"w x 28"d x 39"h	70
HydraSwing 40 Twin	DC Power Supply 120	DCPS-120	S-DCP-1-C1	335 lb	39"w x 28"d x 39"h	70
DC Power Supply 150	DC Power Supply 150	DCPS-150	S-DCP-1-C2	335 lb	39"w x 28"d x 39"h	70

	<p>24VDC UPS, Uninterruptible Power Supply, for HySecurity hydraulic industrial operators. The DC battery backup can only be integrated with DC motor-driven hydraulic industrial operators, thus, DC motor based hydraulic operators are purchased together with a DC Power Supply as an integrated pair. See individual hydraulic operator models for specifications.</p> <p>Available in single phase only. Low voltage: 115V 50/60Hz (requires 30A branch circuit), or High voltage: 208-230V 50/60Hz (requires 15A branch circuit). Be certain to order the correct DC Power Supply voltage model as chargers are not field convertible.</p> <p>Note: If a UPS is needed for an existing AC installation, consider using the AC Power Supply with HyInverter AC. (HySecurity does not support or warranty field conversions of AC powered operators to DC powered to add a battery backup. If a DC gate operator is to have a DC battery back-up, it must be ordered as a system from the factory to comply with the UL/ETL test certification we've obtained.)</p> <p>Install Note: HySecurity DC Power Supply enclosure must be mounted within 10 ft (3 m) of the operator with a minimum of 6 gauge wire used to connect between the DC supply and gate operator. For longer distances, call HySecurity Tech Support.</p> <p>Includes two 110Ah sealed, AGM batteries for extended cycles.</p>
---	--

DC Power Supply with Installed Options

Name	Part Number	Description
Crate, Export Shipping, DC Power Supply	S-DCP-B-01	Certified heat treated wood crate for export shipping, DC Power Supply

HydraSupply XL™

Universal Wedge HPU. Retrofit most vehicle barrier. Little or no site work to impair facility use, or compromise security.



Standard battery backup keeps controls active and accumulator stores sufficient power for four cycles if power fails.

Available gravity return and power return models.



5-year warranty: Unparalleled reliability.



Available single acting: For gravity return or double acting for powered return.



Integrated manifold: With state-of-the-art cartridge valves yields high performance in a compact, easy to service, package.



Small system footprint: Compact power and control design reduces system footprint to a fraction of competitors.



No crane required: Light enough to install with loader or forklift.



3-5 seconds. Open/Close: 1-2 seconds FAST EFO. Dependent on wedge specs.



Heavy duty: Up to hundreds of cycles. After AC power loss with DC Power Supply with HyCharger DC™**.



HydraSupply XL Technical Specifications

Model	HydraSupply XL Single Acting AC	HydraSupply XL Double Acting AC	HydraSupply XL Single Acting DC	HydraSupply XL Double Acting DC
Duty Cycle	100/hr depends on wedge			
Horsepower	5 hp		4 hp	
Drive	Hydraulic			
Open/Close Time	3-5 seconds, dependent on wedge specs			
Emergency Fast Operate	1-2 seconds, dependent on wedge specs			
Manual Operation	Hand pump (standard)			
UPS Battery Backup Cycles	Generates multiple cycles from fully charged accumulator.			
Accumulator	2.5 or 5 gallon	5 gallon	2.5 or 5 gallon	5 gallon
Temperature Rating	-40° to 158° F (-40° to 70° C) or -10° to 158° F (-23° to 70° C) HySecurity specified biodegradable fluid			
Input Voltage	115V or 208-230V 50/60Hz			
Single Phase Voltages	230V 60Hz,220V 50Hz*	230V 60Hz,220V 50Hz*	115V 50/60Hz 23A*** or 208-230V 50/60Hz 11.5A	
Three Phase Voltages	208-230/460V 60Hz,220/380/440V 50Hz		n/a	
Batteries	Two 8Ah batteries power low voltage controls for 24 hours after AC power loss		Two 110 Ah batteries located in separate DC UPS enclosure	Two 110Ah batteries located in separate DC UPS enclosure
Communication	RS-232, RS-485			
User Controls	Smart Touch Controller with 70+ configurable options. Smart Touch keypad and 32 character, OLED display or a PC using S.T.A.R.T. software			
Relays	Three configurable user relays: one 30VDC, 3A solid state and two 250VAC, 10A electromechanical. Optional Hy8Relay™ for 8 additional relay outputs.			
Enclosure	HydraSupplyXL: Type 3R, 91w x 122h x 41d cm (36w x 48h x 16d inch), optional NEMA 4X		HydraSupply XL: Type 3R, 91w x 122h x 41d cm (36w x 48h x 16d inch), optional NEMA 4X; DC Power Supply: Type 3R, 76w x 76h x 30d cm (30w x 30h x12d inch)	
Finish	Gray polyester powdered paint finish over galvanized steel			
ETL Listed (UL 325)	Control panel certified to UL 508A by ETL			
Cylinder Size	up to four 2 x 12 inch cylinders or one 4 x 12 inch cylinder			
Reservoir	7 gallon			
Warranty	5 year			

* HydraSupply XL retrofits most manufacturer's vehicle barrier wedges. Contact HySecurity sales at 800-321-9947 to confirm wedge specifications

** The operator's normal duty cycle and the actual number of combined cycles available from batteries depends upon wedge plate weight, number of batteries, state of charge and health, ambient temperature, accessory power draw and frequency of gate cycles during power outage.

*** 115V input requires 30A branch circuit.

HydraSupply XL Models

Solution	Models	Component Part Numbers	Weight	Dimensions	Freight Class
HydraSupply XL Single Acting AC	HydraSupply XL, HI Volume AC	S-HXL-1-K1	600 lb	44"w x 27"d x 58"h	70
HydraSupply XL Double Acting AC	HydraSupply XL, Double Action AC	S-HXL-1-K2	600 lb	44"w x 27"d x 58"h	70
HydraSupply XL Single Acting DC	HydraSupply XL, HI Volume DC	S-HXL-1-K6	500 lb	44"w x 27"d x 58"h	70
HydraSupply XL Double Acting DC	HydraSupply XL, Double Action DC	S-HXL-1-K7	500 lb	44"w x 27"d x 58"h	70



DC Power Supply (UPS Models Only) DC models retain full functionality during an AC power outage using DC Power Supply with HyCharger DC™, a powerful 50A three stage charger, custom built for continuous duty and long battery life. The DC Power Supply is a separate insulated and ventilated enclosure containing two sealed maintenance free AGM 110Ah, 12VDC batteries. Available in single phase only. Low voltage: 115V 50/60Hz (requires 30A branch circuit), or High voltage: 208-230V 60/50Hz (requires 15A branch circuit).

Be certain to order the correct DC Power Supply voltage model as chargers are not field convertible.

*HydraSupply™ XL retrofits most manufacturer's vehicle barrier wedges. Contact HySecurity sales at 800-321-9947 to confirm wedge specifications.

Call for price quote on all HydraSupply XL HPUs.

HydraSupply XL Installed Options

Name	Order code	Description
Crate, Export Shipping, HydraSupply XL	S-HXL-B-01	Certified heat treated wood crate for export shipping, HydraSupply XL.
Heater, 230VAC, HydraSupply XL	S-HXL-6-06	Heater with thermostat, 208-230VAC, HydraSupply XL.
Heater, 460VAC, HydraSupply XL	S-HXL-6-10	Heater with thermostat, 460VAC, HydraSupply XL.
Radio Receiver, Single Channel, Open, XL	S-HXL-9-00	Single channel receiver and coax antenna, wired for open control only.

HydraSupply XL Accessories

Name	Part Number	Description
Beacon, Strobe, Amber, 24VDC	MX000997	24VDC Amber Beacon Strobe.
Cable, Smart Touch Controller	MX4138	Download cable with USB to RS-232 adapter, 6 ft, connects laptop to Smart Touch Controller, use with Smart Touch Analyze and Retrieve Tool (S.T.A.R.T.).
Detector, Vehicle, Hy5B™ 2.0	MX4621	Improved loop detector module with digital interface to SmartTouch 720/725 and all other HySecurity controllers. Automatically sets sensitivity. Automatically compensates for gate movement. Advanced loop diagnostics.
Heater Kit, 230VAC	MX001110	Heater kit with thermostat, 460VAC, includes relay contactor, for SwingRiser, HydraLift, HydraSwing, HydraWedge.
Heater Kit, 460VAC	MX001111	Heater kit with thermostat, 460VAC, includes relay contactor, for SwingRiser, HydraLift, HydraSwing, HydraWedge.
Photo Eye Kit, Reflective, 40 ft, 24VDC	MX000999	Reflective photo eye kit, 40 ft range, AC or 24VDC, includes reflector, mounting bracket and hardware.
Photo Eye, Through Beam, 65 ft	MX5972-01	Through beam photo eye with integrated hood. Includes mounting hardware.
Push Button Station, 2 Button	MX001180	Push button station, 2 button, open/close (NEMA 1).
Push Button Station, 3 Button	MX001174	Push button control station, 3 button, open/close/stop (NEMA 1).
Receiver, Remote, Antenna and Coax Cable	MX001179	Antenna and coax cable for single and dual channel receiver.
Receiver, Remote, Single Channel	MX001181	Linear Megacode™ receiver, 1 channel, 300MHz, includes antenna and 3 ft cable.
Relay Module, Hy8Relay™, Smart Touch	MX3307-02	Extended Hy8Relay module provides 8 additional programmable relay outputs for Smart Touch operators.
Relay, 90-280VDC, Solid State	MX002895	90-280VDC solid state relay.
Transmitter, Remote, 1 Button	MX001202	Linear Megacode™ transmitter, 1 button, 300MHz.
Transmitter, Remote, 2 Button	MX001203	Linear Megacode™ transmitter, 2 button, 300MHz.

HVM Product Accessories

Just a few of the many accessories available. See operator parts section for more.



AMBER STROBE BEACON
24VDC



LIGHT AND POLE ASSEMBLY



HY5B™ VEHICLE DETECTOR



CLOCK TIMER



**PUSH BUTTON STATION, 2 OR 3
BUTTON**



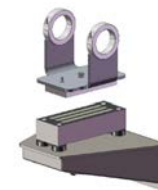
PHOTO EYE KITS



**RADIO RECEIVERS
& TRANSMITTERS**



HY8RELAY™



MAGNETIC LOCK KIT

Parts Diagrams

StrongArm® M30/M50 Diagrams44

Pivot Post	44
Catch Post.....	45
Arms and Hardware.....	46
Hydraulic Panel	47
Hydraulic Panel for M30/M50 NP (no-power).....	48
AC Electrical Panel	49
AC Electrical Panel for operators manufactured before 6/28/2019.....	50
CE Electrical Panel	51

HydraWedge™ SM50 Diagrams52

HydraSupply XL, Control Box	53
HydraSupply XL, Accumulator and Reservoir	54
HydraSupply XL Reservoir and Motors	55

WedgeSmart™ DC Diagrams56

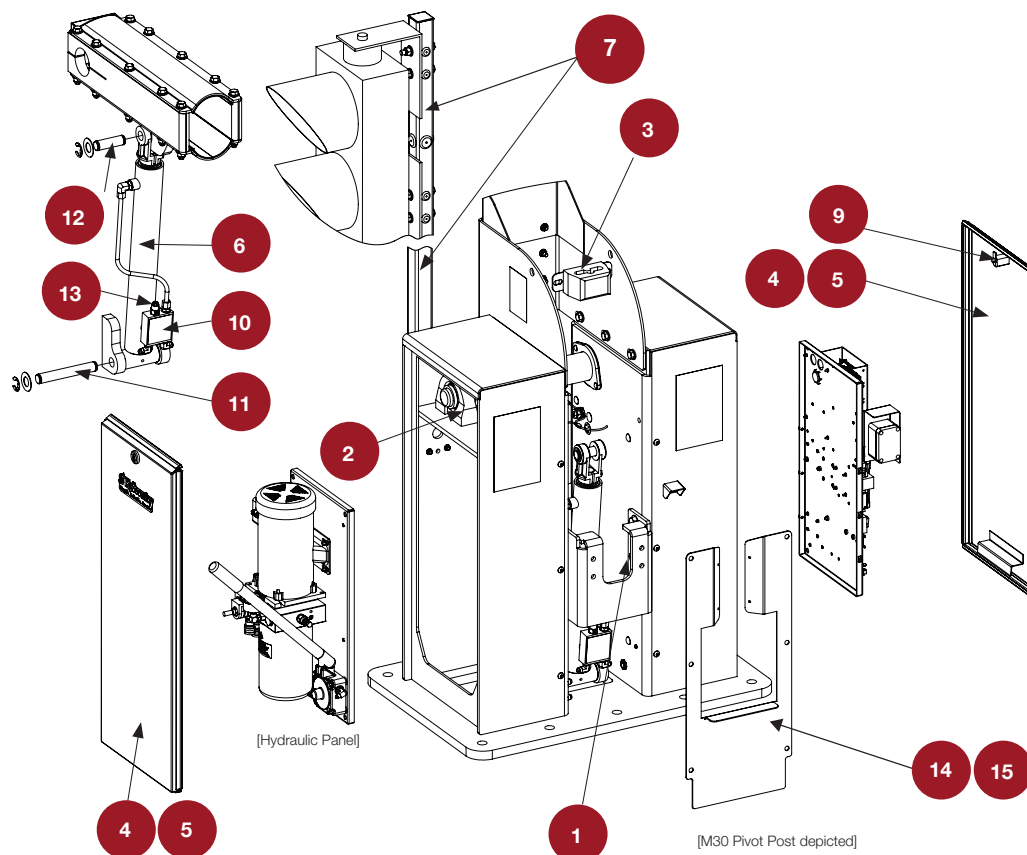
Arm Hardware and Plate	56
Chassis, Drive and Electrical	57
Chassis, Drive and Electrical	58
Electrical.....	59

AC and DC Power Supply Diagrams.....60

AC Power Supply with HyInverter AC	60
DC Power Supply	60

StrongArm® M30/M50 Diagrams

Pivot Post



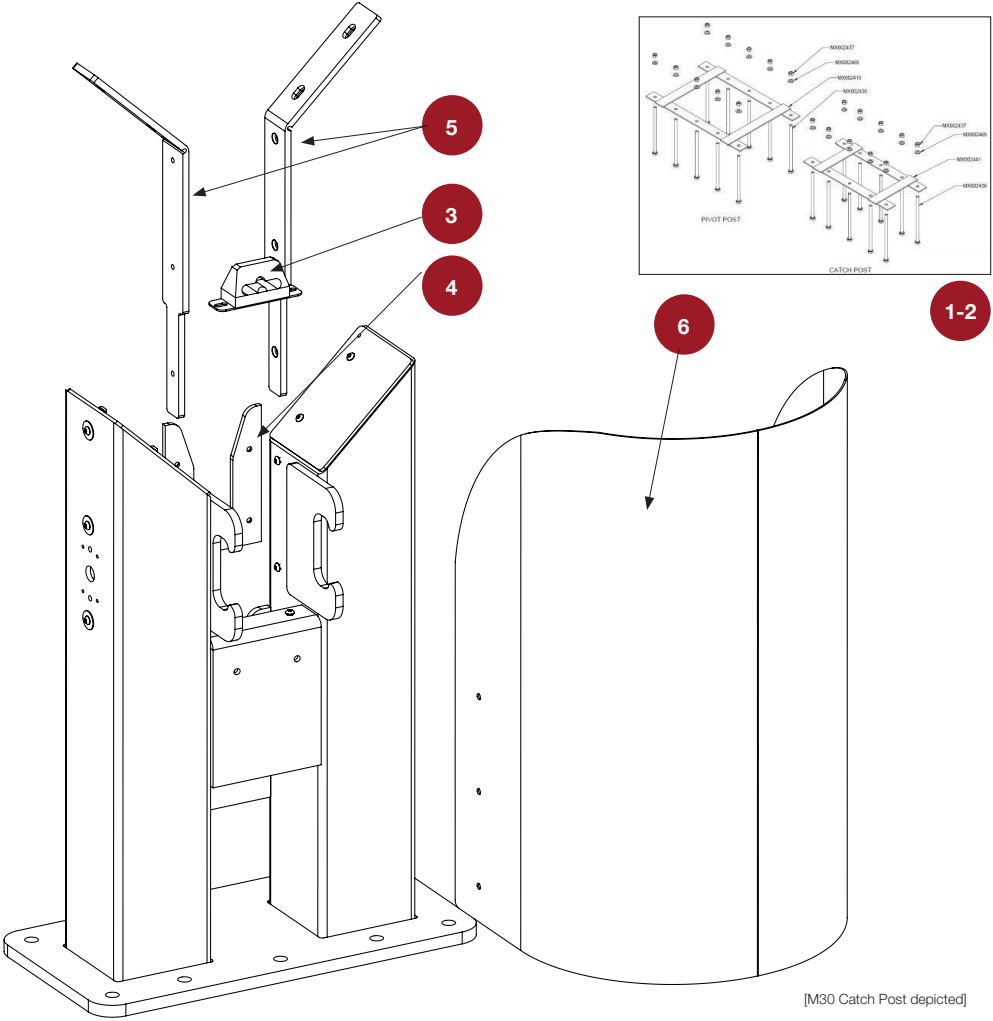
This drawing is a representation and should be used for parts reference only.

Item no.	Part Name	Part Number	StrongArm M30/M50 Models
1	Bearing, Pillow Block, 1 inch	MX000771	all
2	Bearing, Tapped, 1.9375 inch	MX002647	all
3	Bumper, Pivot Post	MX002295	all
4	Cover, Pivot Post, Replacement Kit, Galvanized	MX002609	all
5	Cover, Pivot Post, Replacement Kit, Signal Yellow	MX002726	all
6	Cylinder Assembly, Position Sensing	MX002605	all
7	Light and Pole Assembly, Traffic	MX5484	all
8	Light and Pole Assembly, Traffic, CE	MX5638-02	all

Item no.	Part Name	Part Number	StrongArm M30/M50 Models
9	Lock Kit, Interchangeable Core, Pivot Post Cover	MX3509	all
10	Manifold, Brake, Close	MX002837	all
11	Pin, Cylinder, Lower	MX002382	all
12	Pin, Cylinder, Upper	MX002381	all
13	Valve, Brake	MX000657	all
14	Cover, Cylinder, Galvanized	MX3021-01	all
15	Cover, Cylinder, Signal Yellow	MX3021-04	all

StrongArm® M30/M50 Diagrams

Catch Post



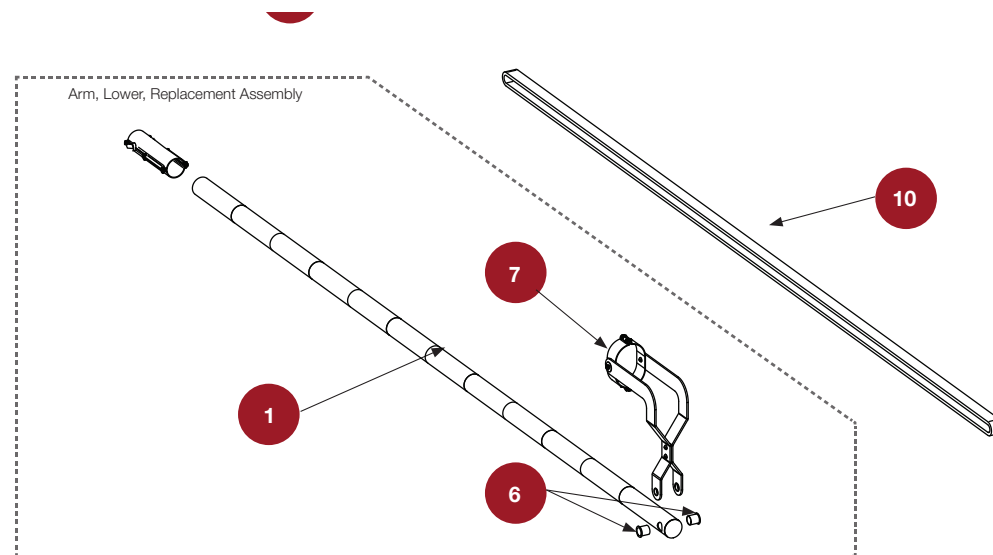
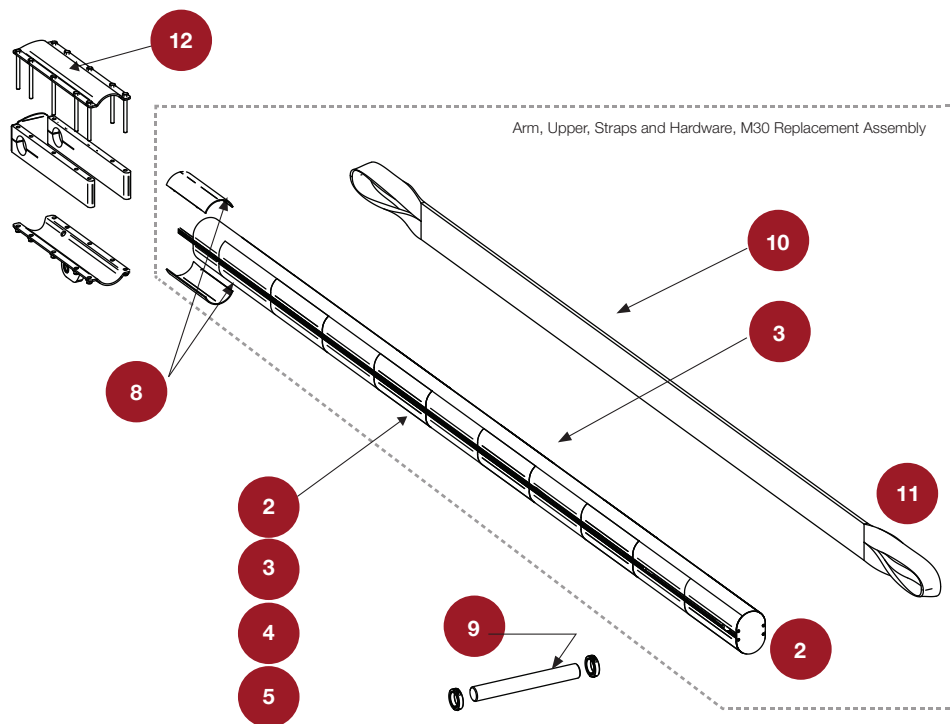
This drawing is a representation and should be used for parts reference only.

Item no.	Part Name	Part Number	StrongArmCrash M30/M50 Models
1	Anchor and Template Kit, M30	MX002557	M30
2	Anchor and Template Kit, M50	MX3030	M50
3	Bumper, Catch Post	MX002708	all

Item no.	Part Name	Part Number	StrongArmCrash M30/M50 Models
4	Guide, Lower Arm, Catch Post	MX002851	all
5	Guide, Protective, Catch Post	MX002850	all
6	Shield, Entrapment, Catch Post	MX002834	all

StrongArm® M30/M50 Diagrams

Arms and Hardware



This drawing is a representation and should be used for parts reference only.

Item no.	Part Name	Part Number	Models
1	Arm Assembly, Lower, with Strap and saddle M30 and M50	MX2604-NN*	all
2	Arm Assembly, Upper, M30, with Straps and LED lighting	MX3141-NN*	M30
3	Arm Assembly, Upper, M50, with Straps and LED Lighting	MX3140-NN*	M50
4	Arm Assembly, Upper, Manual M30, with 2 Straps	MX3726-NN*	M50
5	Arm Assembly, Upper, Manual, M50, with 3 Straps	MX5769-NN*	M50
6	Bearing, Poly, 1.25 inch ID x 1.5 inch	MX002588	all
7	Linkage Assembly, Lower Arm	MX002723	all

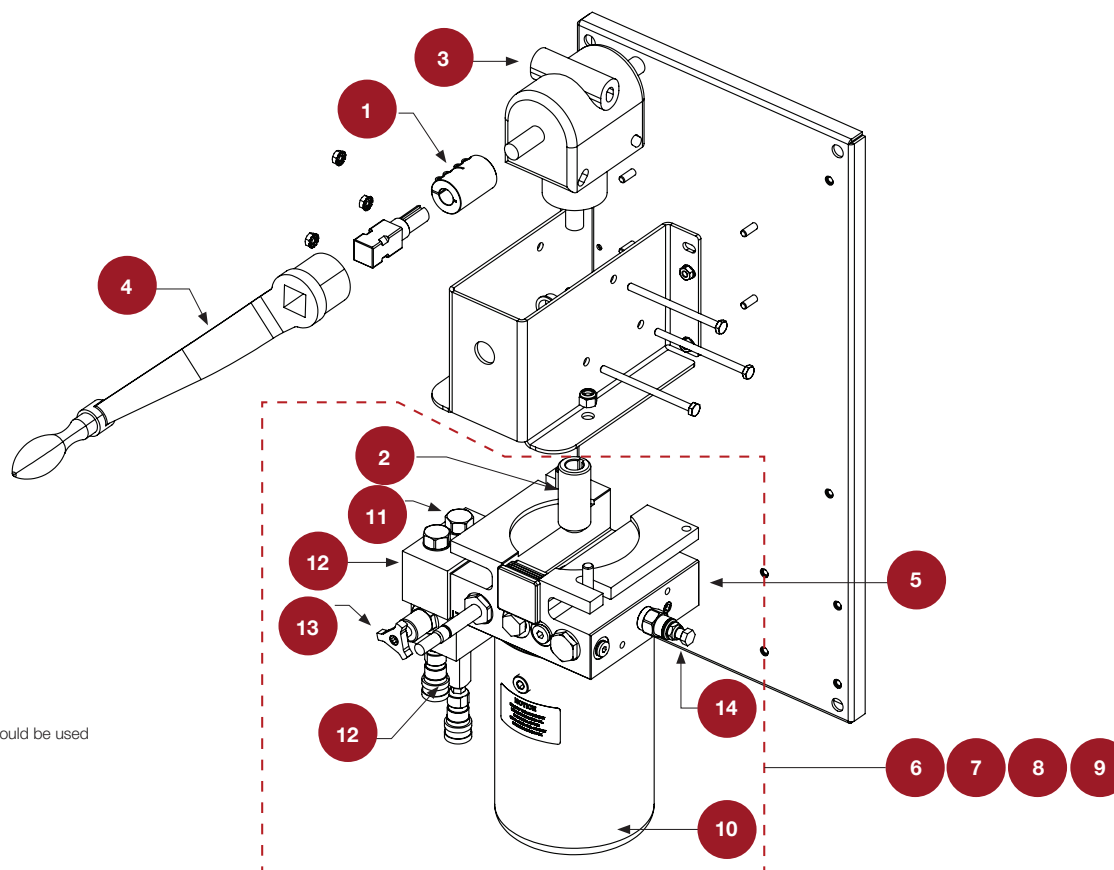
Item no.	Part Name	Part Number	Models
8	Pad, Rubber, 6 x 13.5 inch	MX002634	all
9	Pin, Catch, Upper Arm	MX002277	all
10	Strap, Lower Restraining	MX2387-NN*	all
11	Strap, Upper Restraining	MX2228-NN*	all
12	Saddle Assembly with hardware	MX3142	all

* -NN designates the clear opening of the gate in whole foot increments. Other lengths may be available for additional charge. Contact HySecurity for details.

** Contact HySecurity for the correct part and quantity for your application.

StrongArm® M30/M50 Diagrams

Hydraulic Panel for M30/M50 NP (no-power)



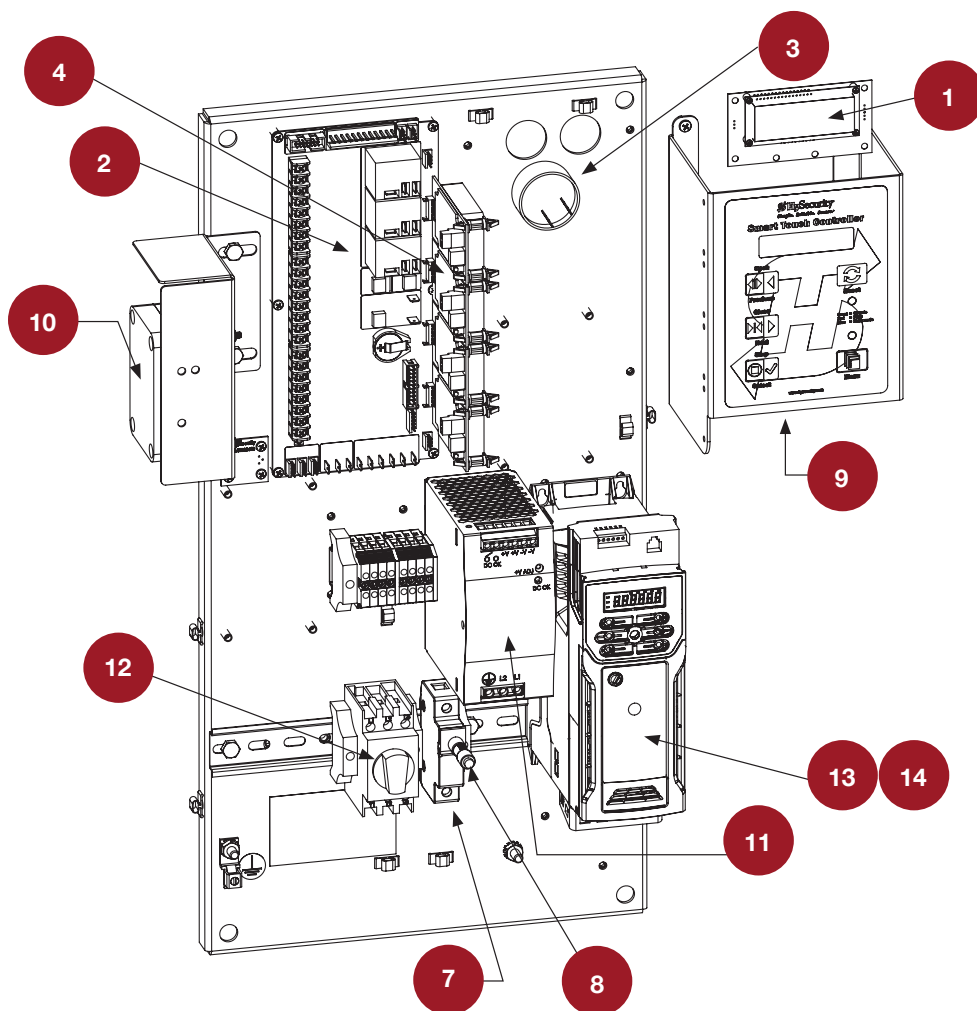
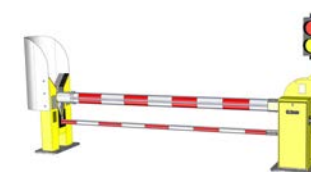
This drawing is a representation and should be used for parts reference only.

Item no.	Part Name	Part Number	StrongArm M30/M50 (No-power models)
1	Coupler, 5/8 x 5/8 inch, Keyed	MX3692	all
2	Coupler, Motor, 5/8 inch Shaft, 6T, New	MX002054	all
3	Gearbox, 3:1, Bevel, Right Angle	MX3684	all
4	Hand Crank, 10 inch L Square Drive	MX3691	all
5	Manifold Assembly, NP (No Power)	MX3689	NP
6	Pump Pack, Biodegradable, StrongArm M30/M50 NP, 12 - 18 ft	MX3688-02	NP
7	Pump Pack, Biodegradable, StrongArm M30/M50 NP, 20 - 24 ft	MX3688-01	NP

Item no.	Part Name	Part Number	StrongArm M30/M50 (No-power models)
8	Pump Pack, StrongArm M30/M50 NP, 12 - 18 ft	MX3687-02	NP
9	Pump Pack, StrongArm M30/M50 NP, 20 - 24 ft	MX3687-01	NP
10	Reservoir, 4 Qt	MX000161	all
11	Valve, Check, Manifold	MX000352	all
12	Valve, Flow Control	MX001258	all
13	Valve, Manual Bypass	MX001255	all
14	Valve, Relief, 3000 PSI	MX000174	all

StrongArm® M30/M50 Diagrams

AC Electrical Panel

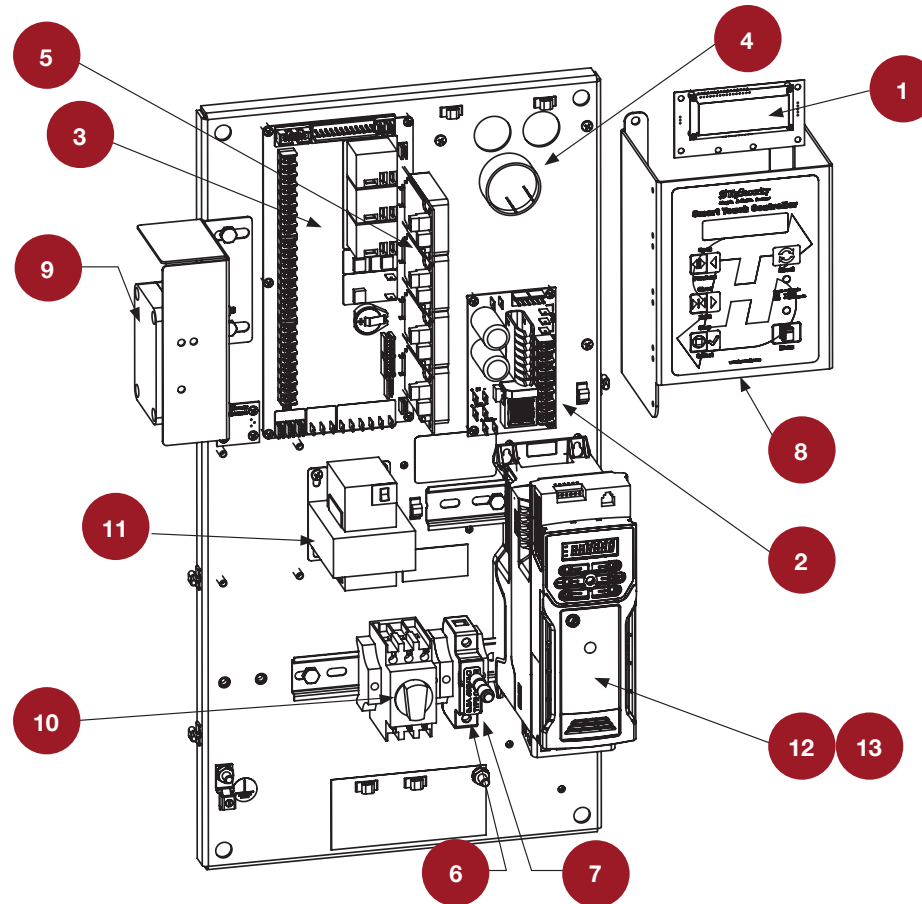


This drawing is a representation and should be used for parts reference only.

Item no.	Part Name	Part Number	StrongArm M30/ M50 effective 6/28/2019
1	Board, Display	MX3356	all
2	Board, Smart Touch Controller	MX000585-0	all
3	Buzzer, Piezo	MX001036	all
4	Detector, Vehicle, Hy5B™	MX4621	all
5	Filter, StrongArm CE, 240V/220V	MX4384	all CE models
6	Filter, StrongArm CE, 480V/380V	MX4385	all CE models
7	Fuse Holder, Class CC	MX002670	all
8	Fuse, Class CC, 2A	MX3339	all
9	Keypad, Smart Touch Controller	MX3399	all
10	Photo Eye Kit, Through Beam, 65 ft, 24VDC	MX3990	all
11	Power Supply, 240W, 24VDC	MX4660	all
12	Switch, Disconnect, AC	MX002835	all
13	Variable Frequency Drive Unit (VFD), Modbus, 208-230VAC, 50/60Hz, 1Ø/3Ø	MX4210	all 208,220,230VAC 50/60Hz input
14	Variable Frequency Drive Unit (VFD), Modbus, 380-460VAC, 50/60Hz, 3Ø	MX4211	all 380,460VAC 50/60Hz input

StrongArm® M30/M50 Diagrams

AC Electrical Panel for operators manufactured before 6/28/2019

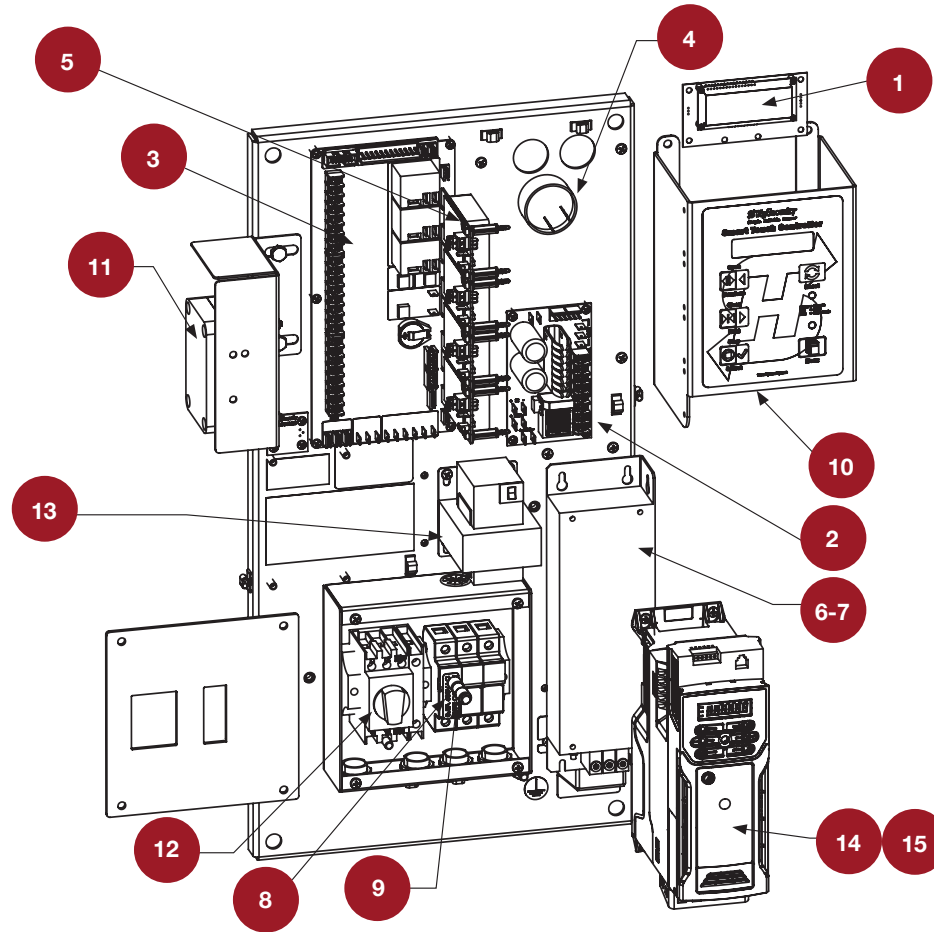


Item no.	Part Name	Part Number	StrongArm M30/M50 manufactured prior to 6/28/2019
1	Board, Display	MX3356	all
2	Board, Power Supply, AC	MX000487	all
3	Board, Smart Touch Controller	MX000585-0	all
4	Buzzer, Piezo	MX001036	all
5	Detector, Vehicle, Hy5B™	MX4621	all
6	Fuse Holder, Class CC	MX002670	all
7	Fuse, Class CC, .5A	MX002672	all

Item no.	Part Name	Part Number	StrongArm M30/M50 manufactured prior to 6/28/2019
8	Keypad, Smart Touch Controller	MX3399	all
9	Photo Eye Kit, Through Beam, 65 ft, 24VDC	MX3990	all
10	Switch, Disconnect, AC	MX002835	all
11	Transformer, 24VAC Output, 75VA, 60Hz	MX000486	all
12	Variable Frequency Drive Unit (VFD), Modbus, 208-230VAC, 50/60Hz, 1Ø/3Ø	MX4210	all 208,220,230VAC 50/60Hz input
13	Variable Frequency Drive Unit (VFD), Modbus, 380-460VAC, 50/60Hz, 3Ø	MX4211	all 380,460VAC 50/60Hz input

StrongArm® M30/M50 Diagrams

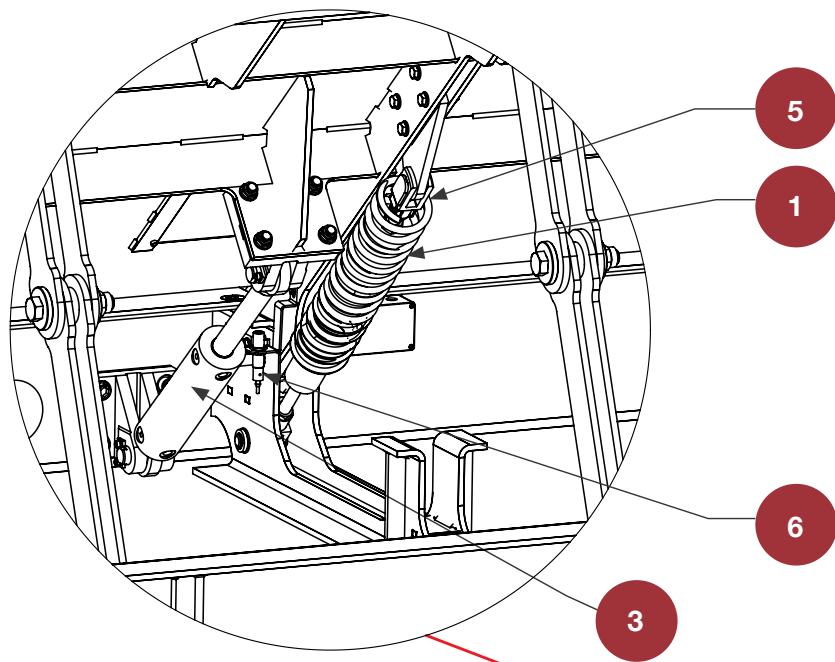
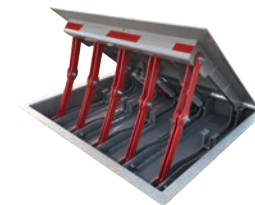
CE Electrical Panel



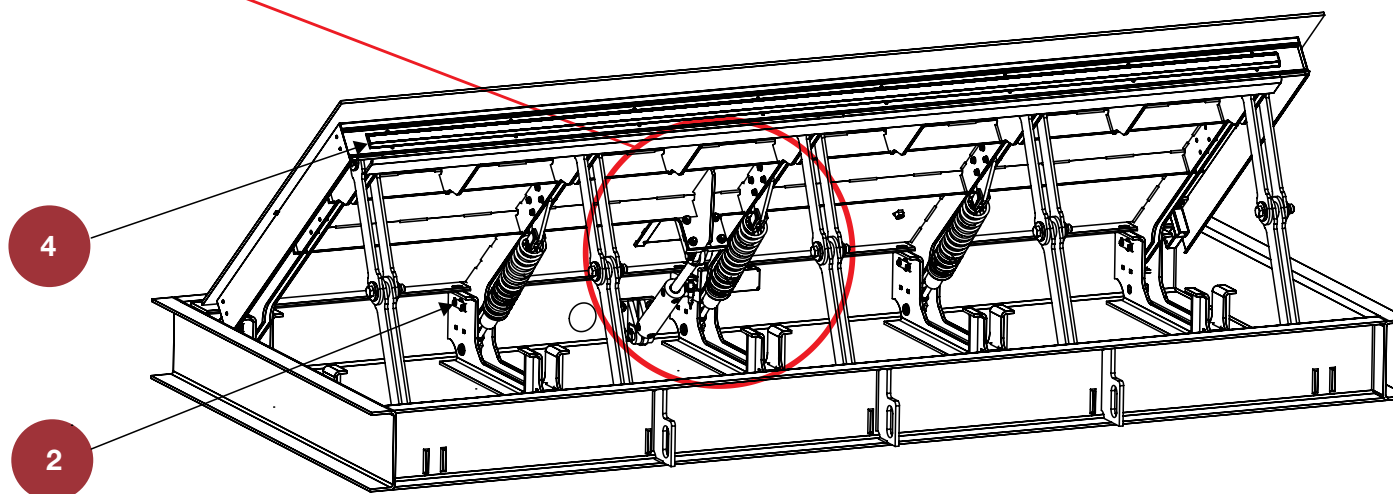
Item no.	Part Name	Part Number	StrongArm M30/ M50 CE Models
1	Board, Display	MX3356	all
2	Board, Power Supply, AC	MX000487	all
3	Board, Smart Touch Controller	MX000585-0	all
4	Buzzer, Piezo	MX001036	all
5	Detector, Vehicle, Hy5B™	MX4621	all
6	Filter, StrongArm CE, 240V/220V	MX4384	all CE models
7	Filter, StrongArm CE, 480V/380V	MX4385	all CE models
8	Fuse Holder, Class CC	MX002670	all

Item no.	Part Name	Part Number	StrongArm M30/ M50 CE Models
9	Fuse, Class CC, .5A	MX002672	all
10	Keypad, Smart Touch Controller	MX3399	all
11	Photo Eye Kit, Through Beam, 65 ft, 24VDC	MX3990	all
12	Switch, Disconnect, AC	MX002835	all
13	Transformer, 24VAC Output, 75VA, 60Hz	MX000486	all
14	Variable Frequency Drive Unit (VFD), Modbus, 208-230VAC, 50/60Hz, 1Ø/3Ø	MX4210	all 208,220,230VAC 50/60Hz input
15	Variable Frequency Drive Unit (VFD), Modbus, 380-460VAC, 50/60Hz, 3Ø	MX4211	all 380,460VAC 50/60Hz input

HydraWedge™ SM50 Diagrams

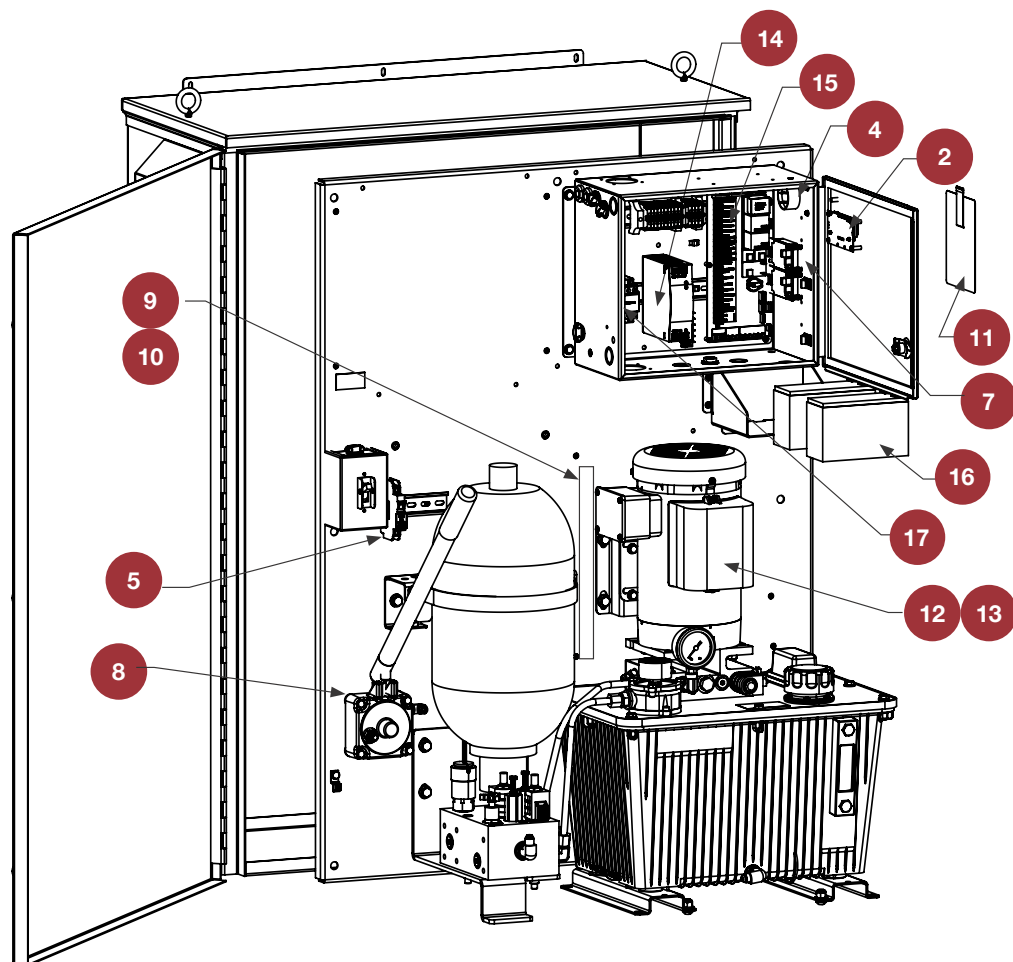
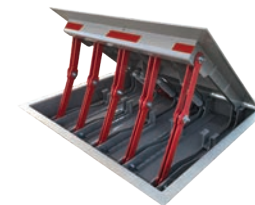


Item no.	Part Name	Part Number
1	Block, Slide, Spring Piston	MX3958
2	Bushing, Hinge, HydraWedge	MX3960
3	Cylinder, Hydraulic, w/Fittings, HydraWedge	MX4759
4	Light, LED Wedge, 3 m	MX3963-XX
5	Pin, Piston, Integral Clip	MX3959
6	Switch, Proximity, NC, 18 mm NPN	MX3950



HydraWedge™ SM50 Diagrams

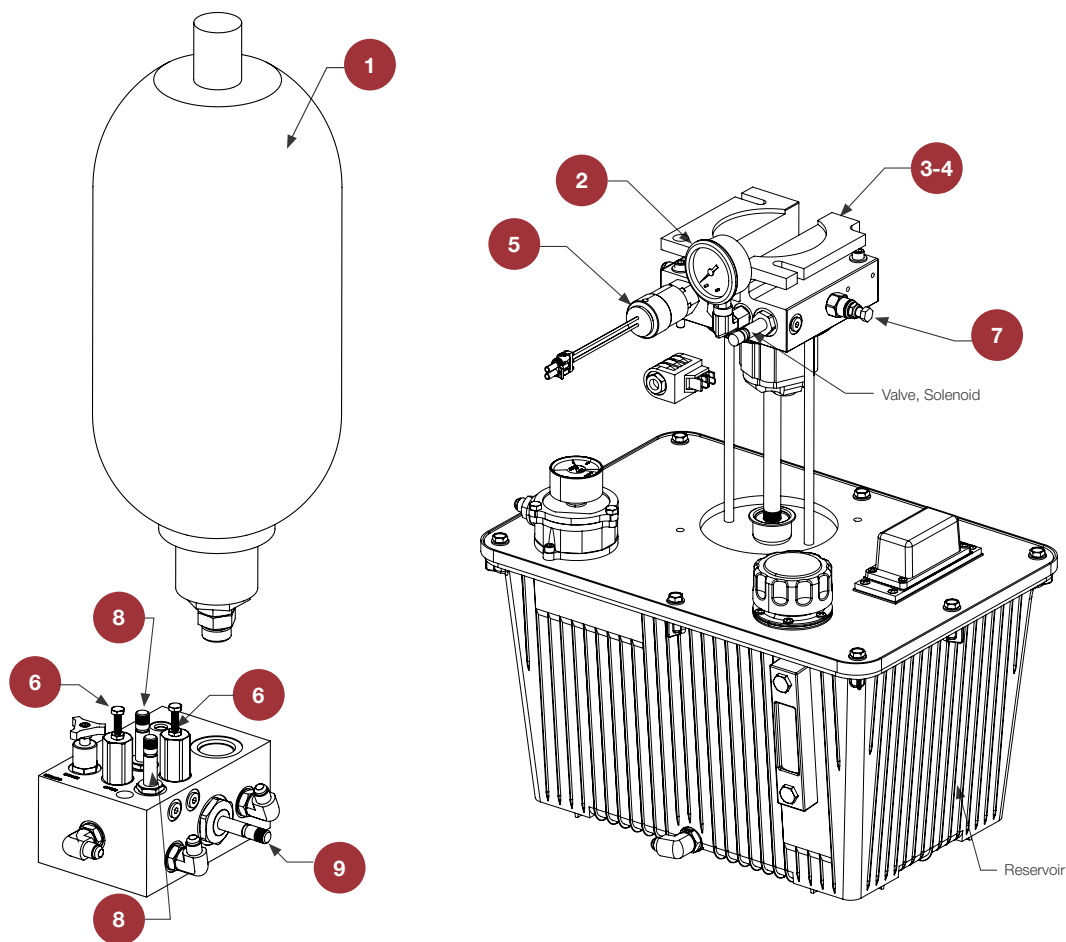
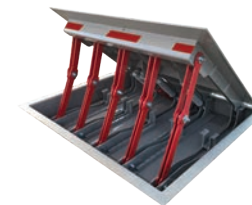
HydraSupply XL, Control Box



Item no.	Part Name	Part Number	HydraWedge SM50 Models
1	Battery Kit, 8Ah, Replacement	MX002008	all
2	Board, Display	MX3356	all
3	Board, Smart Touch Controller	MX4134	all
4	Buzzer, Piezo	MX001036	all
5	Circuit Breaker, 3A, DC	MX3967	all
6	Coupler, Motor, 5/8 inch Shaft, 6T	MX002054	all
7	Detector, Vehicle, Hy5B™	MX4621	all
8	Hand Pump Assembly, 3000 PSI	MX4054	all
9	Heater Kit, 230VAC	MX001110	all
10	Heater Kit, 460VAC	MX001111	all
11	Keypad, Smart Touch Controller	MX3399	all
12	Motor, Electric, 60Hz, 2 hp, 1Ø, 3450 RPM, 208-230VAC	MX001637	all
13	Motor, Electric, 60Hz, 2 hp, 3Ø, 3450 RPM, 208-230/460VAC	MX001638	all
14	Power Supply, 120W, 24VDC	MX4097	all
15	Control board, SmartTouch	MX000585-0	all
16	Battery, 12VDC	MX000909	all
17	Contractor, 18a, 24VDC Coil	MX4105	all

HydraWedge™ SM50 Diagrams

HydraSupply XL, Accumulator and Reservoir



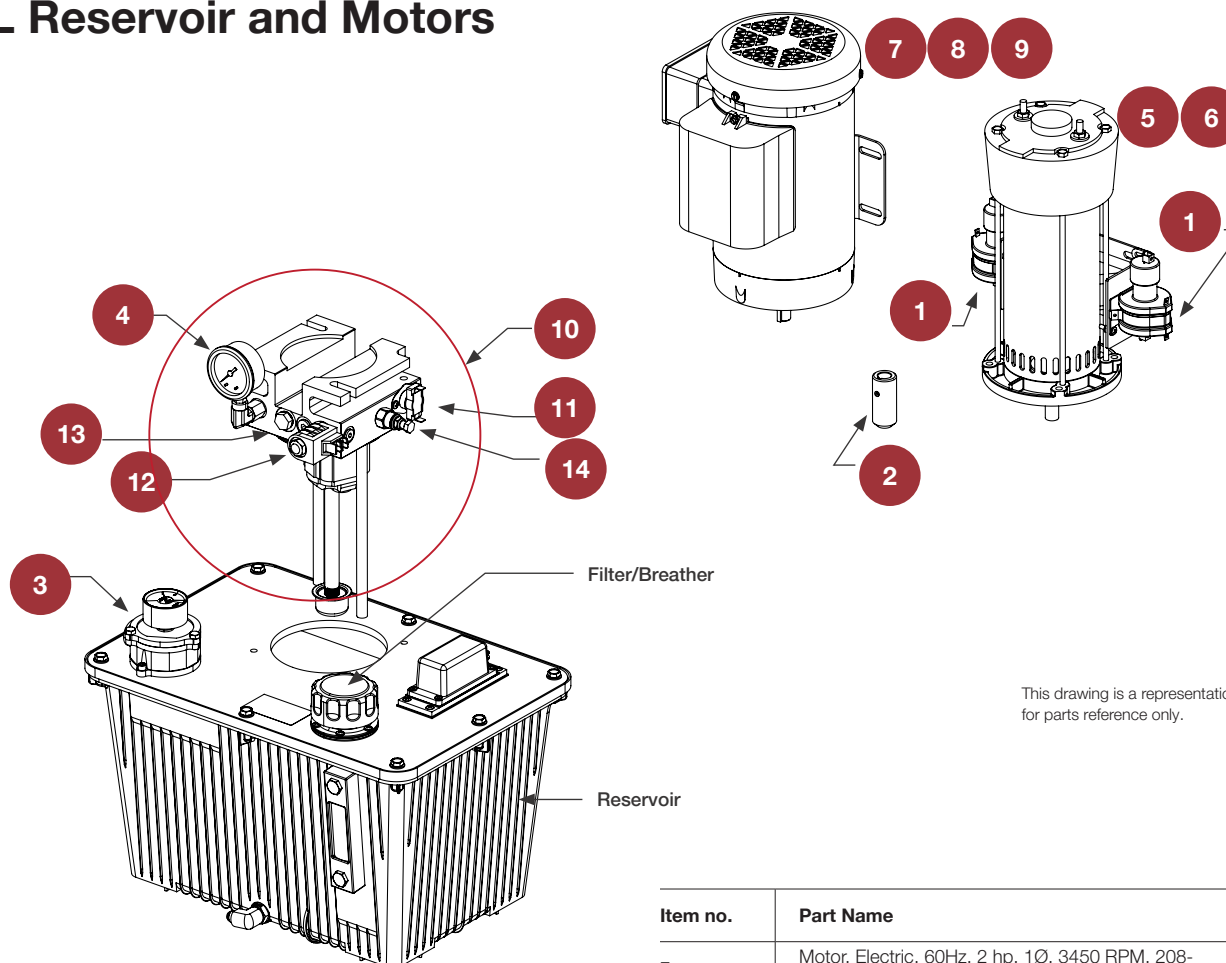
This drawing is a representation and should be used for parts reference only.

Item no.	Part Name	Part Number	HydraWedge SM50 Models
1	Accumulator, Bladder, 2.5 gal	MX3741	all
2	Gauge, Pressure, 5000 PSI	MX3954	all
3	Pump Pack, 1.2 GPM, HydraWedge	MX3955-02	all
4	Pump Pack, 2.5 GPM, HydraWedge	MX3955-05	all
5	Switch, Pressure 2200-2500 PSI	MX4112	all

Item no.	Part Name	Part Number	HydraWedge SM50 Models
6	Valve, Flow, PCOMP 2 GPM	MX3739-02	all
7	Valve, Relief, 3000 PSI	MX000174	all
8	Valve, Manual Bypass/Quick Stop	MX000222	all
9	Valve, Solenoid, 25 GPM	MX3740	all
10	Valve, Solenoid, 2P2W	MX000173	all

HydraSupply XL™ Diagrams

HydraSupply XL Reservoir and Motors



This drawing is a representation and should be used for parts reference only.

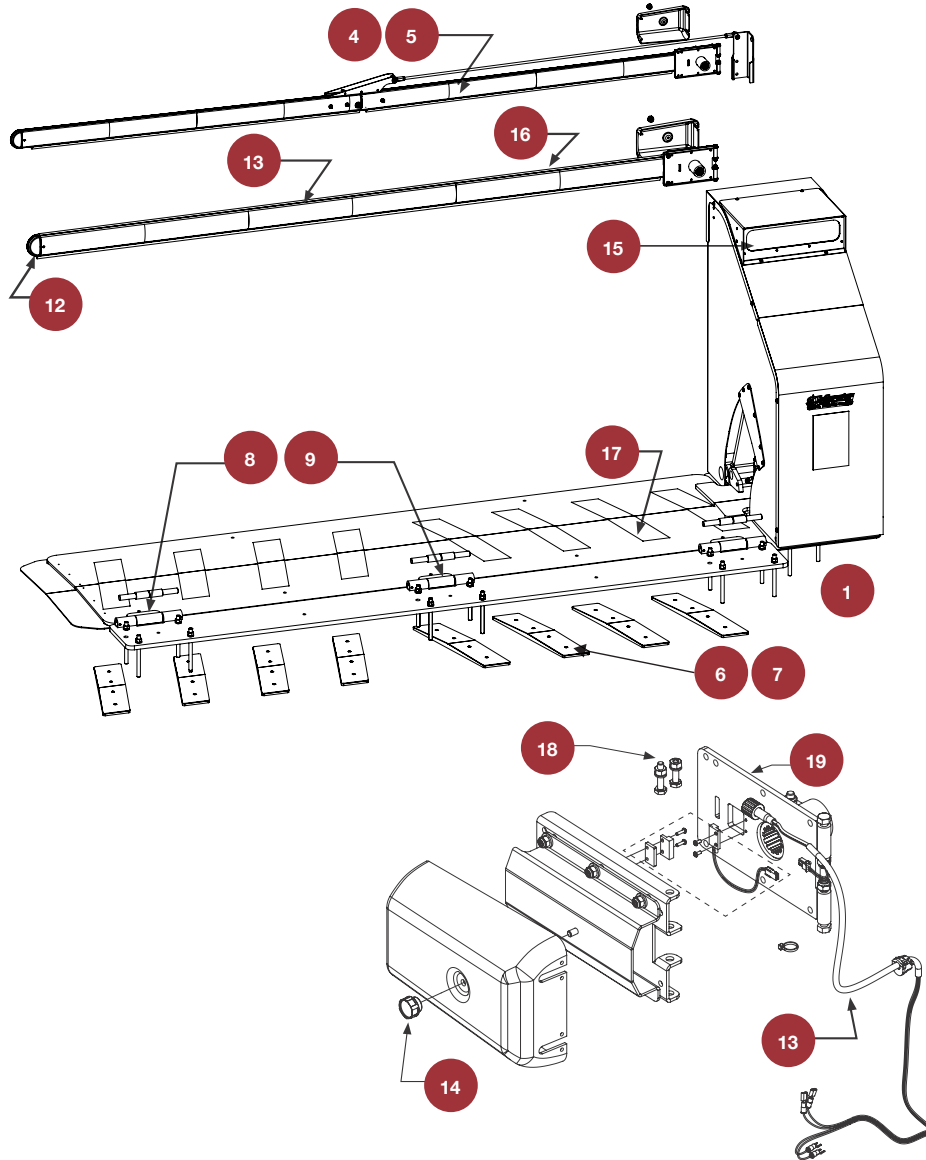
Item no.	Part Name	Part Number	HydraSupply XL Models
1	Contactor, Mercury	MX001098	all
2	Coupler, Motor, 5/8 inch Shaft, 6T, New	MX002054	all
3	Filter, Element	MX4162	all
4	Gauge, Pressure, 5000 PSI	MX3954	all
5	Motor, Electric, 24VDC, 2 hp	MX001647	Single
6	Motor, Electric, 24VDC, 4 hp	MX001648	Twin

Item no.	Part Name	Part Number	HydraSupply XL Models
7	Motor, Electric, 60Hz, 2 hp, 1Ø, 3450 RPM, 208-230VAC	MX001637	Single
8	Motor, Electric, 60Hz, 2 hp, 3Ø, 3450 RPM, 208-230/460VAC	MX001638	Single
9	Motor, Electric, 60Hz, 5 hp, 3Ø, 3450 RPM, 208-230/460VAC	MX001639	Twin
10	Pump Pack, 2.5 GPM	MX3955-05	Single Acting AC/DC
11	Thermostat, Fan, Open 95°F, Close 110°F	MX002916	all
12	Valve Coil, Quick Stop, 24VDC	MX000185	all
13	Valve, Check, Endhead Main	MX000171	all
14	Valve, Relief, 3000 PSI	MX000174	all



WedgeSmart™ DC Diagrams

Arm Hardware and Plate

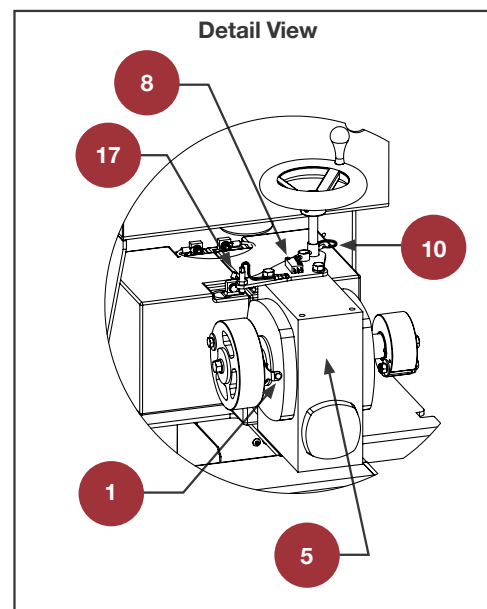


This drawing is a representation and should be used for parts reference only.

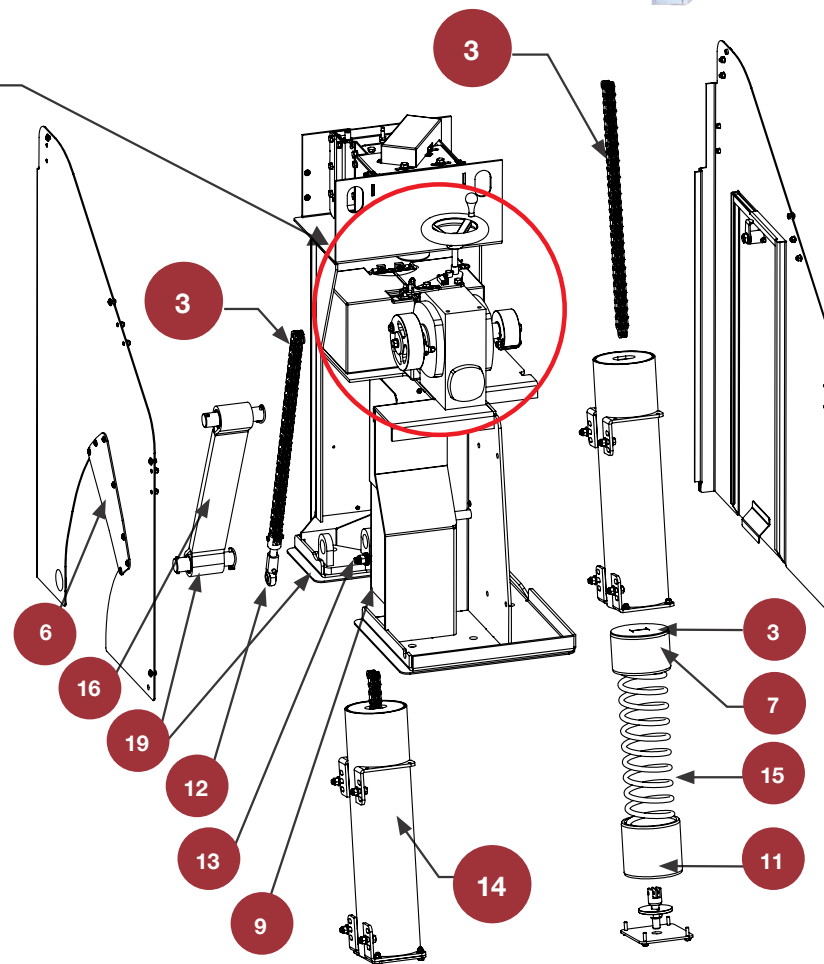
Item no.	Part Name	Part Number	WedgeSmart DC Models
1	Anchors and Epoxy Kit	MX3460	all
2	Arm Assembly, Aluminum, Oval, 9 ft	MX4182-09	9 ft model
3	Arm Assembly, Aluminum, Oval, 10 ft	MX4182-10	10 ft model
4	Arm Assembly, Articulating, 8 ft Vehicle Clearance	MX3114-03	all
5	Arm Assembly, Articulating, 9 ft Vehicle Clearance	MX3114-04	all
6	Bumpers, Replacement Kit, 12 and 14 ft Wedge Plate	MX3699-05	12 and 14 ft models
7	Bumpers, Replacement Kit, 9 and 10 ft Wedge Plate	MX3699-04	9 and 10 ft models
8	Bushings and Pins, 3 Hinges Replacement Kit	MX3697-03	9 and 10 ft models
9	Bushings and Pins, 4 Hinges, Replacement Kit	MX3697-04	12 and 14 ft models
10	Bushings, 3 Hinges, Replacement Kit	MX3696-03	9 and 10 ft models
11	Bushings, 4 Hinges, Replacement Kit	MX3696-04	12 and 14 ft models
12	Cap, End, Oval Arm	MX3555	all
13	Harness, LED Light/Kill Switch	MX4057	all
14	Knob, Cover, Breakaway Arm Bracket w/Kill Switch	MX002653	all
15	Light, Rear Mount, WedgeSmart DC	MX3805	all
16	Lights, Flexible, 10 ft	MX4124-10	all
17	Tape, Anti-Slip Replacement Kit	MX3698	all
18	Bolt and Nut Kit, Breakaway	MX3104-P	all
19	Bracket, Breakaway arm, with kill switch	MX4050	all

WedgeSmart™ DC Diagrams

Chassis, Drive and Electrical



Item no.	Part Name	Part Number	WedgeSmart DC Models
1	Bracket, Target Magnet	MX3416	all
2	Chain, BL634 Leaf	MX3241	all
3	Gasket, Spring Tube Top	MX3594	all
4	Gearbox, with Oil, Wedge, Left Handing	MX3701-01	Left hand
5	Gearbox, with Oil, Wedge, Right Handing	MX3701-02	Right hand
6	Guard, Rubber, Wedge Pivot	MX3454	all
7	Guide, Spring End	MX3766	all
8	Limit Switch	MX001777	all
9	Panel, Inside	MX3334	all
10	Pin, Quick Release, 3/16 x 1-1/2 inch	MX3374	all
11	Piston, Spring Guide	MX3767	all
12	Rod End, Ball Joint	MX3237	all
13	Shear Bolt Assembly	MX3395	all
14	Spring Tube, Assembly	MX3760	all
15	Spring, Compression	MX3756	all

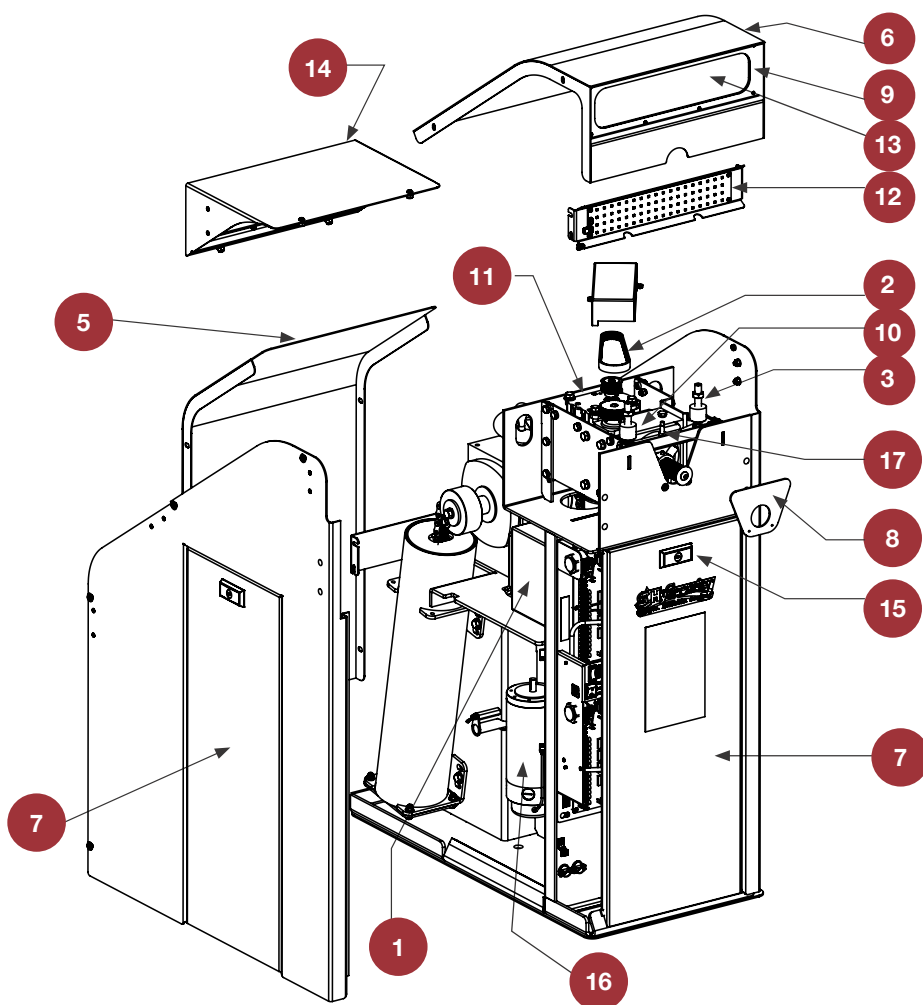


This drawing is a representation and should be used for parts reference only.

Item no.	Part Name	Part Number	WedgeSmart DC Models
16	Strap	MX3418	all
17	Target Sensor, Wedge, with Terminals	MX3566	all
18	Wedge Strap and Pins Assembly, Left Handing	MX3615-01	Left hand
19	Wedge Strap and Pins Assembly, Right Handing	MX3615-02	Right hand

WedgeSmart™ DC Diagrams

Chassis, Drive and Electrical

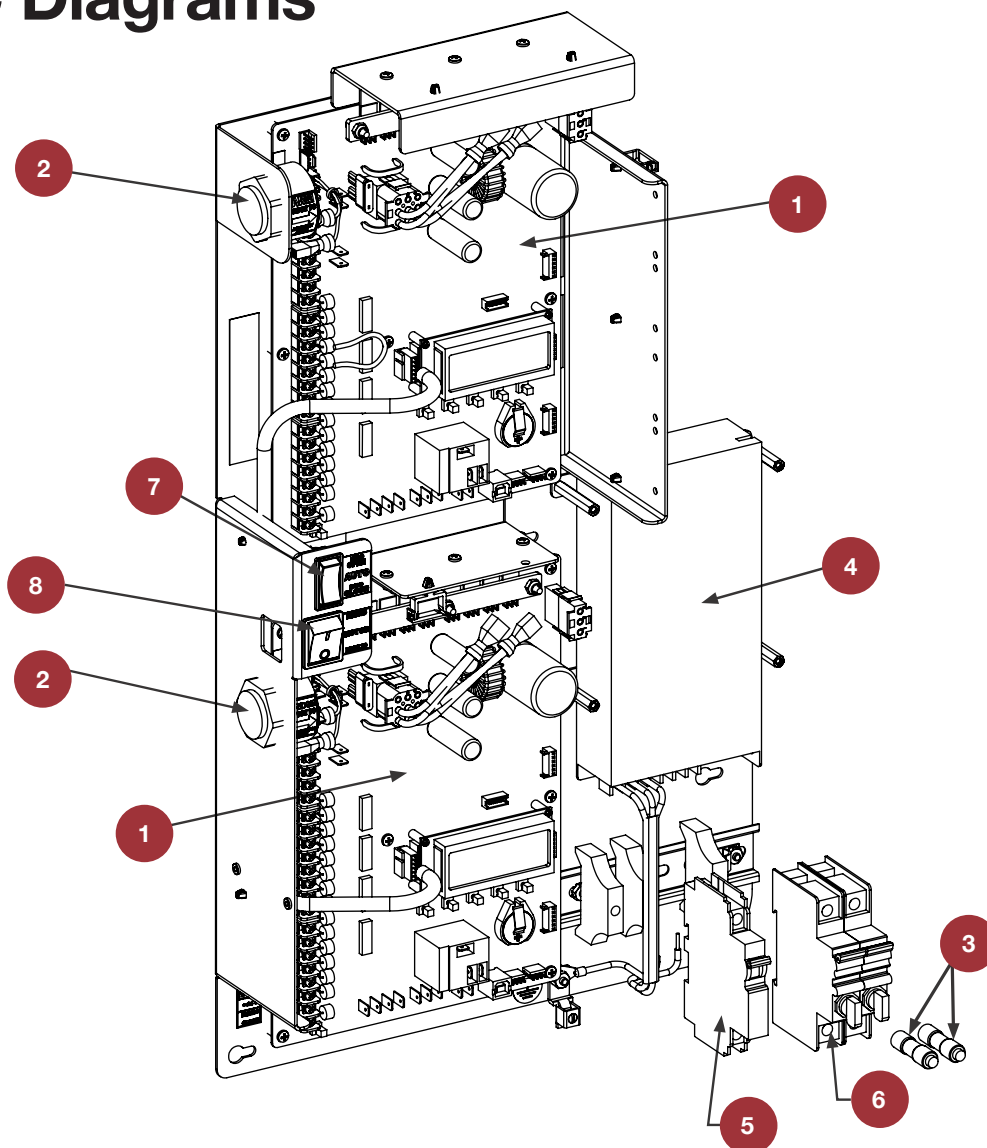


This drawing is a representation and should be used for parts reference only.

Item no.	Part Name	Part Number	WedgeSmart DC Models
1	Battery Kit, 50Ah, Replacement	MX002013	all
2	Belt, Drive	MX3544	all
3	Bumper Replacement Kit, Physical Stop	MX3103	all
5	Cover, Rear	MX3330	all
6	Cover, Top	MX3820	all
7	Door, Access	MX3331	all
8	Gasket, Shaft Seal	MX3627	all
9	Gasket, Traffic Lens	MX3818	all
10	Gearbox, with Oil	MX3270	all
11	Gearmotor, 24VDC, w/Hall Sensor	MX3585	all
12	LED Panel, Red/Green	MX3812	all
13	Lens, Traffic Light	MX3814	all
14	Light, Rear Mount, WedgeSmart DC	MX3805	all
15	Lock and keys, T-Lock	MX000296	all
16	Motor with sensor, 24VDC, 750W	MX002573	all
17	Target, Sensor, Arm	MX3219	all

WedgeSmart™ DC Diagrams

Electrical



This drawing is a representation and should be used for parts reference only.

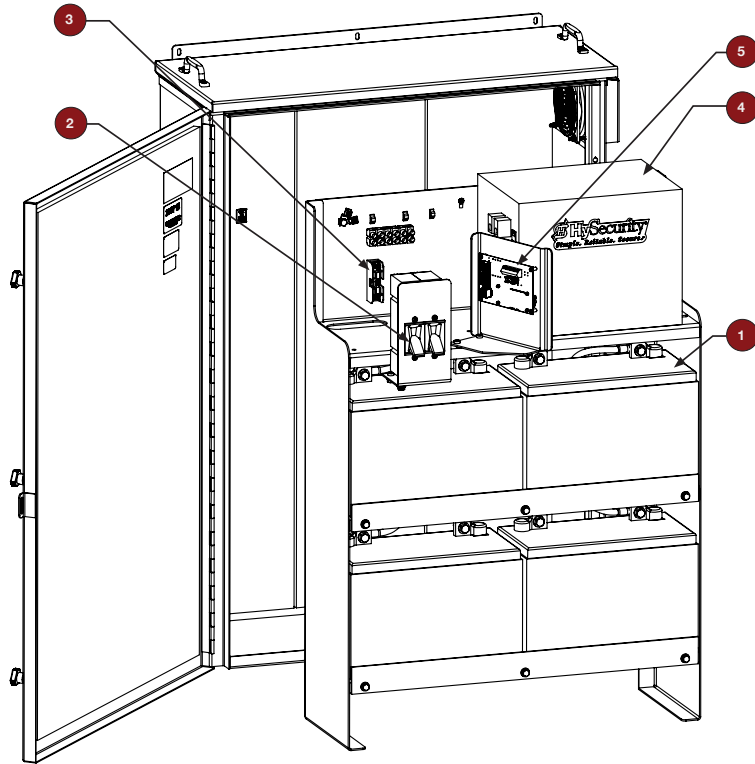
Item no.	Part Name	Part Number	WedgeSmart DC Models
1	Board, Smart DC Controller	MX3037-0	all
2	Buzzer, Piezo	MX001036	all
3	Fuse, 3A, Type CC UL248	MX3538	all
4	Power Supply, 200W, 48VAC	MX3438	all

Item no.	Part Name	Part Number	WedgeSmart DC Models
5	Switch, Circuit Breaker, 30A	MX3754	all
6	Switch, Circuit Breaker, Double Pole	MX3755	all
7	Switch, Hold Open/Hold Close	MX3011	all
8	Switch, On/Off	MX001761	all

AC and DC Power Supply Diagrams

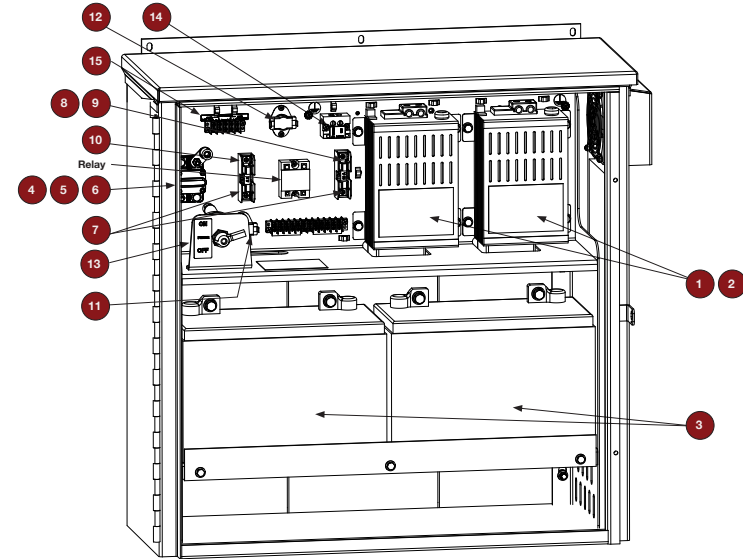
AC Power Supply with HyInverter AC

DC Power Supply



This drawing is a representation and should be used for parts reference only.

Item No.	Part Name	Part Number	HyInverter AC
1	Battery, 12V, 110AH, AGM	MX000877	all
2	Dual Breaker, Battery Disconnect	MX3849	all
3	Fuse, 250V, 20A	MX002897	all
4	Inverter Charger, 3000W	MX002952	all
5	PC board adapter, Inverter Charger Controller	MX3511	all



Item No.	Part Name	Part Number	UPS Models
1	Battery Charger, Retrofit HyCharger DC, 115VAC	MX2918-02	115VAC, 60/50Hz input
2	Battery Charger, Retrofit HyCharger DC, 208/230VAC	MX2914-02	208VAC/230VAC, 60/50Hz input
3	Battery, 12V, 110Ah, AGM	MX000877	all
4	Circuit Breaker, 120A DC	MX000843	all 30F UPS, 40F UPS, 80 UPS (DX1.7, DX, DX1)
5	Circuit Breaker, 150A DC	MX001096	200 UPS (444DX)
6	Circuit Breaker, 60A DC	MX000842	all 15 UPS, 40 UPS (DS, DE)
7	Fuse Block	MX000863	all
8	Fuse, 250V, 20A	MX002897	208VAC/230VAC, input
9	Fuse, 250V, 25A	MX002941	115VAC, input
10	Fuse, 250V, 5A	MX000864	all
11	Thermostat, Heater, Open 38°F, Close 28°F	MX002894	all
12	Thermostat, Fan, Open 95°F, Close 110°F	MX002916	all
13	Switch, Disconnect, DC Power Supply	MX000844	all
14	Terminal Block, 2-Pole	MX000859	all
15	Terminal Block, 5-Pole	MX001270	all

Nice, a world without limits.

Industry leading manufacturer of gate automation solutions

Niceforyou.com

Nice North America

Corporate Office

5919 Sea Otter Place, Suite 100

Carlsbad, Ca 92010

Tech: (760) 438 7000

Sales: (760) 438 7000

Toll Free: (800) 421 1587

Nice North America | HySecurity

Gate & Barrier Division

6705 S 209th St, Ste 101

Kent, WA 98032

Tech: (253) 201 2918

Sales: (253) 867 3700

Toll Free: (800) 321 9947

