

# Industrial Gate and Hostile Vehicle Mitigation Solutions



# Solutions for your entire perimeter

**Protecting key assets and critical infrastructure throughout the world** HySecurity enables the freedom of movement with high protection against unauthorized access, accidental and malicious threats. HVM barriers and gate operators offer the highest level of security around your entire perimeter. HySecurity is proud to offer consistently professional sales support, expert technical support, and quality specification and system design support to meet the growing needs of the high security industry.

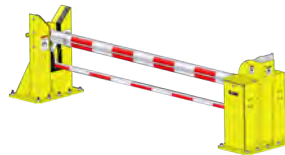
## Vehicle Barriers



StrongArm® M30  
ASTM F2656 M30-P1  
Hydraulic  
5 year warranty



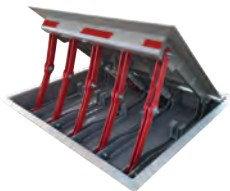
StrongArm® M50  
ASTM F2656 M50-P2  
Hydraulic  
5 year warranty



StrongArm® NP M30/M50  
ASTM F2656 M30/M50  
No power, manual operation  
5 year warranty



StrongSlide™ M30/M50  
ASTM F2656-20 M30-P1  
5 year warranty



HydraWedge™ SM50  
ASTM F2656 M50-P1,  
PAS 68, IWA 14-1  
Hydraulic/controls  
5 year warranty



HydraSupply XL™  
Hydraulics and control  
package  
Retrofits most wedges  
5 year warranty



WedgeSmart™ DC  
ASTM F2656 FS30  
Electromechanical  
2 year w/product registration



Bollards M30/M50  
ASTM F2656 M30/M50  
Fixed, removable  
1 year warranty

## Gate Operators



SlideDriver™ II  
Hydraulic  
5 year warranty



HydraSwing™  
Hydraulic  
5 year warranty



HMI Control Panel  
High resolution Touch screen/Push  
Buttons Control Panel  
1 year warranty



1 year warranty

## Accessories

# Perimeter Security Design and Engineering Services

**We are experts in Perimeter Security Solutions.**

Our customers require technical expertise, design excellence, solutions to problems and ways to communicate their thoughts to those charged with constructing them.

We've strived to assemble the greatest group of engineers, landscape architects, technicians and support personnel in the industry.

We have personnel licensed in all 50 states, Puerto Rico, the District of Columbia, the U.S. Virgin Islands and British Columbia, Canada, giving us in-depth knowledge of all model building codes including local codes and jurisdictions.

HySecurity is committed to being a seamless part of your Perimeter Security design team.

## **We offer Full Design Services:**

- Conceptual Design
- Structural Engineering
- Civil Design and Engineering
- Electrical Design
- Landscape Design and Architecture
- Construction Administration
- Survey
- Historical Preservationists



# Crash-Certified Vehicle Barrier Arm

Stop a 15,000 lbs (6,800 kg) truck driving 30 mph/50 mph in its tracks



## StrongArm<sup>®</sup> M30/M50

Reliably defend high security sites worldwide. Unique dual arm design prevents a large truck or a small passenger vehicle from breaching the security perimeter.

Bright LED arm lighting and highly reflective tape on the upper arm, plus a standard traffic light, boost visibility and inhibit accidental impact. The lower arm, at bumper height, reduces possible injury or death from an accidental passenger car gate strike.

HySecurity backs StrongArm M30/M50 with an unequalled 5 year reliability/quality assurance warranty.

M30

M50

CE

24"

6s - 8s

5s - 7s  
EFO



**STRONGARM M30/M50**

6 models

Clear Opening 12 to 24 ft (3.6 to 7.3 m)

Open/Close Time 6 to 8 seconds

Emergency Fast Close 5 to 7 seconds

# StrongArm® M30/M50

- StrongArm M30 crash certified to ASTM F2656-07 M30, P1\* penetrated less than 1 meter
- StrongArm M50 crash certified to ASTM F2656-07 M50, P2\* penetrated less than 1.2 meter
- StrongArm M30 NP/M50 NP (No-power) models defend high security sites that do not have power.
- International certification models (CE) available
- UPS Backup option – AC Power Supply with HyInverter™ AC\*\*\*

## Technical Specifications

Model	StrongArmCrash M30	StrongArmCrash M30 CE	StrongArmCrash M50	StrongArmCrash M50 CE	StrongArmCrash M30 NP	StrongArmCrash M50 NP
Crash Certified	ASTM F2656-07 M30-P1*	ASTM F2656-07 M30-P1*	ASTM F2656-07 M50-P2*		ASTM F2656-07 M30-P1*	ASTM F2656-07 M50-P2*
Full Open Angle	90°				Adjustable 88° ± 2°	
Duty Cycle	100 cycles/hr**				Manually operated with rotary crank	
Horsepower	2 hp				n/a	
Drive	Hydraulic					
Open/Close Time	6 to 8 seconds depending on arm length				Open time: approx. 1 to 3 minutes depending on arm length; Close time: approx. 15 to 25 seconds depending on arm length	
Emergency Fast Operate	5 to 7 seconds depending on arm length					
Clear Opening	12 to 24 ft in 2 ft increments (366 to 732 cm in 61 cm increments). Call for custom arm length.					
UPS Battery Backup Cycles	Optional 230VAC Power Supply w/HyInverter™ AC for single-phase AC operators				n/a	
Temperature Rating	-40° to 158° F (-40° to 70° C) or -10° to 158° F (-23° to 70° C) Using biodegradeable fluid.					
Single Phase Voltages	208/230V 50/60Hz				n/a	
Three Phase Voltages	208/230V 50/60Hz or 380/460V 50/60Hz				n/a	
Included Accessories	Operator ships with one traffic light and wired through beam photo eye					
Communication	RS-232, RS-485				n/a	
User Controls	Smart Touch Controller with 70+ configurable settings. Smart Touch keypad and 32 character, OLED display or a PC using S.T.A.R.T. software.				n/a	
Relays	Two configurable user relays: 250VAC, 10A electromechanical; Optional Hy8Relay™ for 8 additional relay outputs				n/a	
Finish	Hot dipped galvanized standard. Optional textured powder coat over zinc-based undercoat.					
Foundation	Shallow mount: 6 x 6 x 2 ft (183 x 183 x 61 cm), 4,000 psi concrete or (CO + 8 ft) x 6 x 1 ft ((CO +244 cm) x 183 x 30.5 cm), 5,000 psi concrete. Deep mount: 4 x 4 x 4**** ft (122 x 122 x 122 cm) 4,000 psi concrete. #6 rebar, grade 60		6 x 6 x 4 ft (183 x 183 x 122 cm) 4,000 psi concrete, #6 rebar, grade 60		Shallow mount: 6 x 6 x 2 ft (183 x 183 x 61 cm), 4,000 psi concrete or (CO + 8 ft) x 6 x 1 ft ((CO +244 cm) x 183 x 30.5 cm), 5,000 psi concrete. Deep mount: 4 x 4 x 4 ft (122 x 122 x 122 cm) 4,000 psi concrete. #5 rebar, grade 60	6 x 6 x 4 ft (183 x 183 x 122 cm) 4,000 psi concrete, #6 rebar, grade 60
ETL Listed	Certified to UL 508A by ETL				n/a	
Warranty	5 year w/product registration					

\* P1 and P2 rated for 12 ft clear opening. StrongArm M30 features an ASTM F2656-07 M30 P1 rating (<1m penetration). StrongArm M50 features an ASTM F2656-07 M50 P2 rating (1.2m penetration). Contact HySecurity to receive a copy of the ASTM F2656-07 M30 or M50 Test Certification.

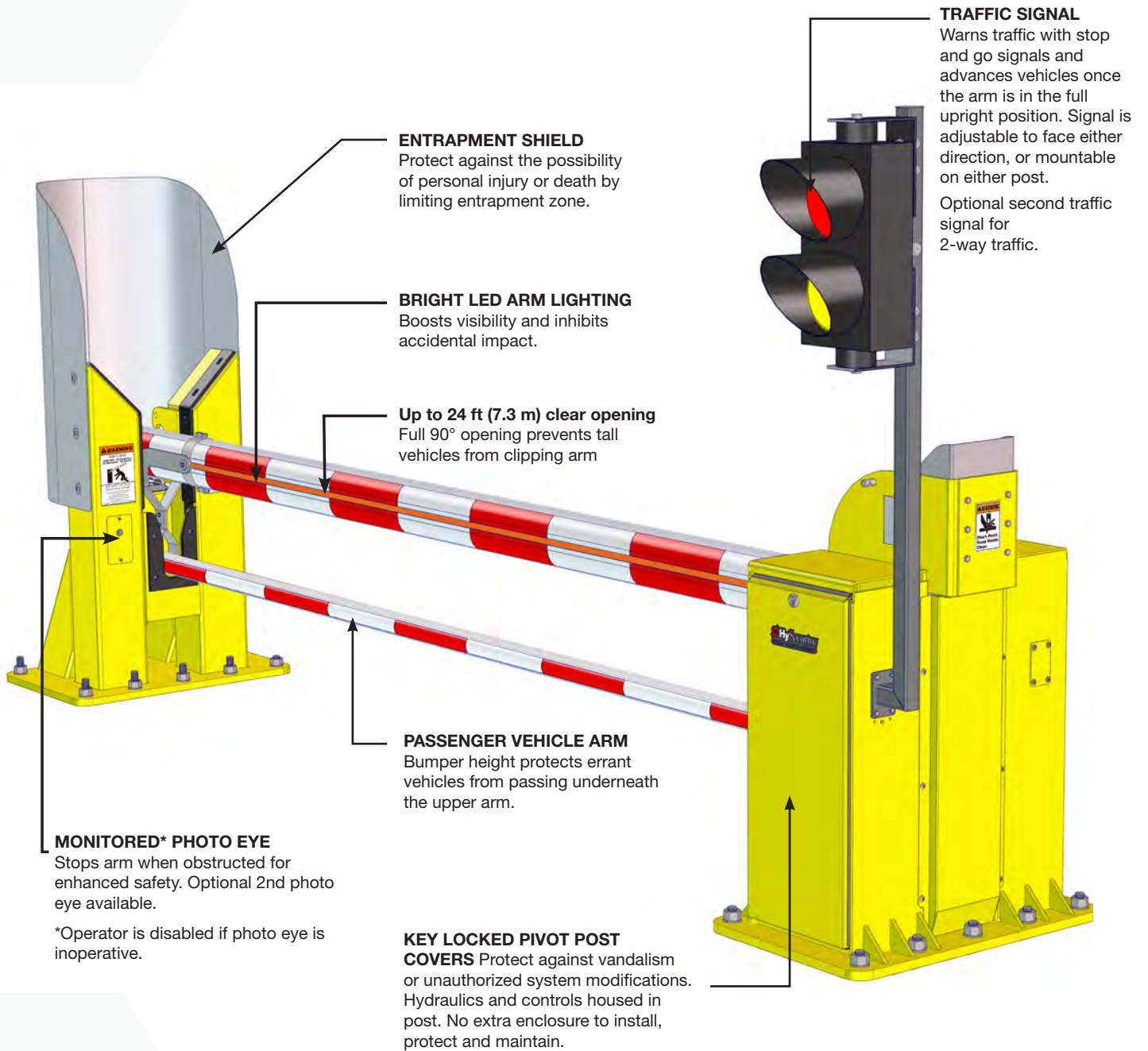
\*\* ExtremeCycle option available.

\*\*\* 208/230VAC, single-phase AC operators only. See AC Power Supply with HyInverter AC for more information.

Only HySecurity authorized distributors and installers, trained or authorized by HySecurity in proper installation techniques, operation and maintenance, are eligible to purchase HySecurity crash-rated barrier products. Patented dual arm design U.S. Pat. No. 9,822,501 B2.

\*\*\*\* 4 x 4 x 4 foundation is crashed engineered.

# Crash-rated, hydraulic barrier arm



**STANDARD HOT DIPPED GALVANIZED STEEL**  
chassis provides optimum corrosion protection. StrongArm M50 pictured above, in optional Safety Yellow.

# Crash tested Slide Gate

The first crash-tested slide gate in the HySecurity StrongSlide™ family.



## StrongSlide™ M30

**Designed with StrongArm and SlideDriver DNA**

**StrongSlide M30** uses similar materials and design for the vehicle arrestor as the proven StrongArm M30. As the premium slide gate operator in the industry, StrongSlide is operated exclusively by SlideDriver™ II to provide reliability commensurate with the needs of a HVM slide gate.







**SLIDEDRIVER™ II**  
5 models up to 20,000 lb gates (9,072 kg)  
Gates 12 to 24 feet clear opening  
Secure gate in about 8 seconds with  
SlideDriver II SD50F

# StrongSlide™ M30

## Designed with StrongArm® and SlideDriver™ DNA

The **StrongSlide M30** uses similar materials and design for the vehicle arrestor as the proven StrongArm M30.

As the premium slide gate operator in the industry, StrongSlide is operated exclusively by SlideDriver™ II to provide reliability commensurate with the needs of an HVM slide gate.

## Features



### Easy operation:

Light weight vehicle arrestor system reduces overall weight for easier operation and long service life.



### Durable:

Steel frame cantilever gate panel with bottom track hardware for durability and smooth operation.



### Compatibility:

Unified mounting template locates and aligns gate rollers, support posts, and arrestor catch bollards for easy installation.



### Crash Rated<sup>††</sup>:

Industry's longest tested certified M30 crash gate with a P1\* rating, tested with a 24 ft clear opening.



### Precise:

Raised platform predrilled for SlideDriver™ II installation.



### Industry leading warranty:

Both StrongSlide and SlideDriver II are protected by industry leading 5 year warranty.\*\*

## Additional Features

### Bottom track cantilever gate

Superior gate mechanics, easier to install, and designed for a service life of 500,000 cycles.\*\*

### StrongArm vehicle arrestor technology

Light weight arrestor keeps the overall weight of gate down, reducing wear and improving reliability and service life.

### Pre-aligned installation template

Error-proofs and simplifies installation for lower overall cost.

### Side-mounted top track

Vertical stabilizer system uses roller element guides in side-mounted track to provide safety, improve performance in windy conditions, and assures alignment at close limit.

### Bolt down design

All attachment points are cast in concrete, and both the gate and arrestor structures are bolted down. This simplifies the installation and assures proper alignment.

### Concrete filled catch bollards

These posts capture the arrestor during an impact and double as bollards to protect the gate, operator, and fence.

### Versatile infill options

A wide array of infill options for any architectural or design need. Constructed from powder coated steel for years of carefree service.

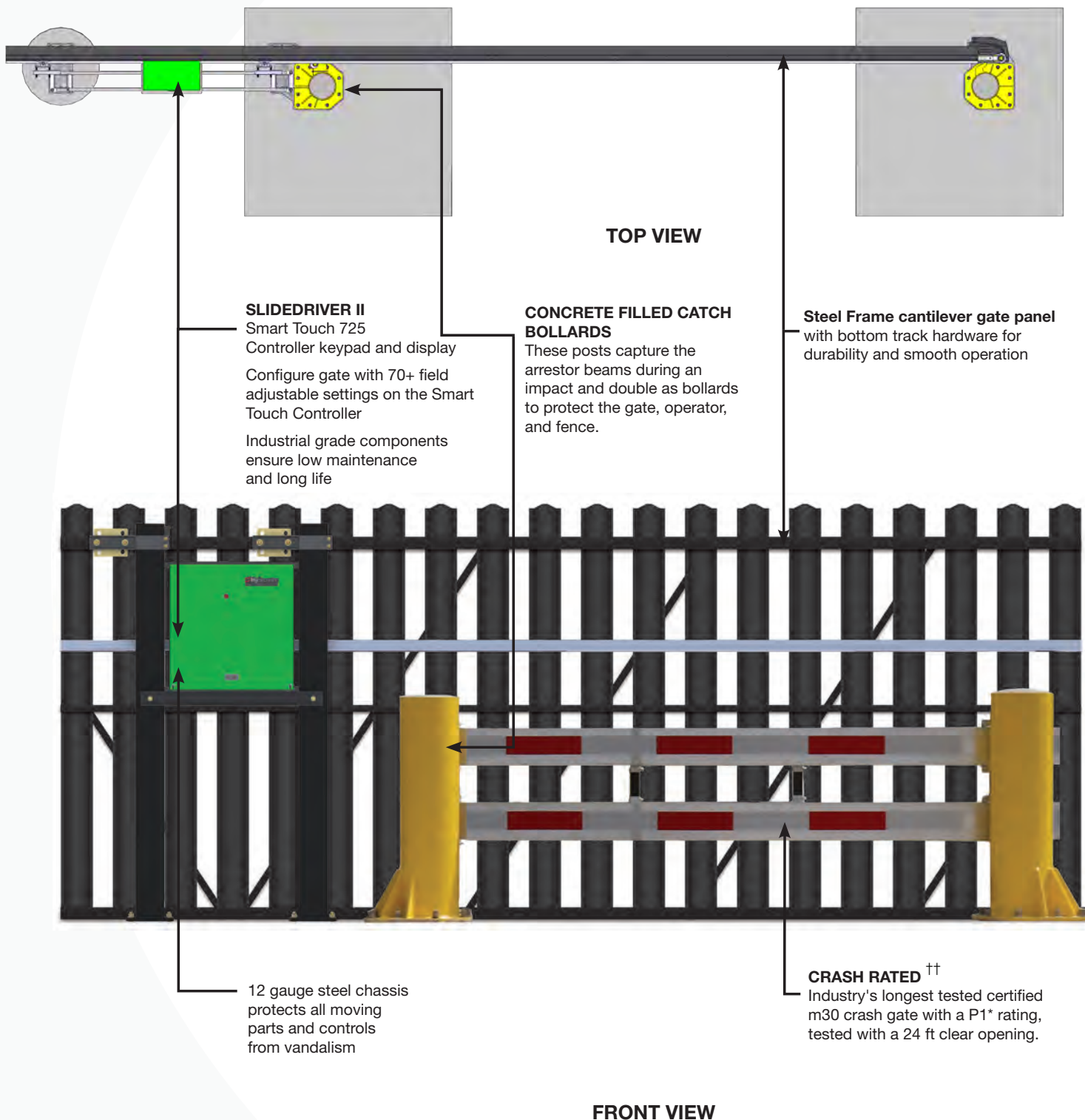
### Designed with SlideDriver II in mind

Industry leading SlideDriver II gate operator bolts down to an elevated custom built platform, making it perfectly positioned to power the gate. SlideDriver II Model SD50F will close a 12ft clear opening the gate in only about 8 seconds in emergencies.

\* Ratings: ASTM F2656-20 M30-P1.

†† Contact HySecurity to receive a copy of the ASTM. F2656-20 M30-P1 Test Certification.

\*\* Preventive maintenance followed per instructions.



**STANDARD HOT DIPPED GALVANIZED STEEL**  
chassis provides optimum corrosion protection. StrongSlide pictured above, in optional Safety Yellow.

# Crash-Rated Vehicle Barrier Wedge

High-cycle – fast throughput, **hundreds of cycles\*\*\*** after AC power loss



## HydraWedge™ SM50

Defends high security sites worldwide with proven reliability and unparalleled performance.

This high-cycle, shallow mount vehicle wedge barrier boasts the toughest domestic and international crash certifications.

HydraWedge SM50 provides high performance and uninterrupted security at a fraction of the competitive system installation and maintenance expense.



\* 2016 Winner GSN: Government Security News. Airport, seaport border Security Awards Program

\*\* SIA Top Award Outdoor Perimeter Protection

\*\*\* only with UPS models



# Expect More



**HYDRAWEDGE SM50**  
4 models  
Crash Certified ASTM  
F2656-15 M50-P1  
Open/Close Time 3 seconds  
Emergency Fast Operate 1 second

# HydraWedge™ SM50

- 3 Crash Certifications – ASTM F2656-15 M50-P1, IWA14-1: 2013, PAS 68: 2013
- Maintain security even when power is lost. Cycle hundreds of times after AC power loss with HydraWedge SM50 UPS
- High-cycle – fast throughput. HydraWedge SM50 cycles thousands of times per day, 3 sec Open/Close time; 1 sec EFO
- Small footprint and shallow foundation allows match of roadway surface
- Minimal rebar and low concrete volume significantly reduces install effort, time and total cost
- Available in 2 to 4 meter widths

## Technical Specifications

Model	HydraWedge SM50	HydraWedge SM50 UPS	HydraWedge SM50 Twin	HydraWedge SM50 Twin UPS
<b>Crash Certified</b>	Domestic ASTM F2656-15 M50-P1 and international IWA 14-1 V/7200[N3C]/80/90:0.0 and PAS68 V/7500[N3]/80/90:0.0/20.7 with no penetration † †			
<b>Duty Cycle</b>	300 cycles/hr		400 cycles/hr divided between 2 wedges	
<b>Horsepower</b>	2 hp		5 hp	4 hp
<b>Drive</b>	Hydraulic			
<b>Open/Close Time</b>	3-4 seconds			
<b>Emergency Fast Operate</b>	1 second			
<b>Manual Operation</b>	Hand pump (standard)			
<b>Wedge Design</b>	Plate width: 2, 2.5, 3, 3.5, 4 m* (6.5, 8, 10, 11.5, 13 ft); Plate height (raised): 1000 mm (3.3 ft); Excavation width: Plate width + 700 mm (27.5 inch); Excavation length: 3.7 m (12 ft); Excavation depth:** 300 mm (1 ft)			
<b>Wheel Load</b>	44,000 lb axle load rating; 22,000 lb wheel load			
<b>UPS Battery Backup Cycles</b>	Standard model generates multiple cycles from fully charged accumulator.	DC Power Supply w/HyCharger DC™ provides hundreds of cycles after AC power loss.***	Standard model generates multiple cycles from fully charged accumulator.	DC Power Supply w/HyCharger DC™ provides hundreds of cycles after AC power loss.***
<b>Backup Cycles</b>	4 cycles: 2.5 gallons accumulator	Hundreds of UPS cycles.	4 cycles: 2.5 gallons accumulator	Hundreds of UPS cycles.
<b>Temperature Rating</b>	-40° to 158° F (-40° to 70° C) or -10° to 158° F (-23° to 70° C) HySecurity specified biodegradable fluid			
<b>Single Phase Voltages</b>	208-230V 60Hz, 220V 50Hz*	115V 60/50Hz 23A† or 208-230V 60/50Hz 11.5A. Choose voltage with care as chargers are not field convertible.	230V 60Hz, 220V 50Hz*	115V 50/60Hz 23A† or 208-230V 50/60Hz 11.5A. Choose voltage with care as chargers are not field convertible
<b>Three Phase Voltages</b>	208-230/460V 60Hz, 220/380/440V 50Hz***	N/A	208-230/460V 60Hz, 220/380/440V 50Hz***	N/A
<b>Batteries</b>	Two 8Ah batteries maintain low voltage to the controls for 24 hours after AC power loss	Two 110 Ah batteries located in separate DC UPS enclosure	Two 8Ah batteries maintain low voltage to the controls for 24 hours after AC power loss	Two 110Ah batteries located in the DC UPS enclosure
<b>Communication</b>	RS-232, RS-485			
<b>User Controls</b>	Smart Touch Controller with 70+ configurable settings. Smart Touch keypad and 32 character, OLED display or a PC using S.T.A.R.T. software.			
<b>Relays</b>	Three configurable user relays: one 30VDC, 3A solid state and two 250VAC, 10A electromechanical. Optional Hy8Relay™ for 8 additional relay outputs.			
<b>Enclosure</b>	HydraSupply XL: Type 3R, 91w x 122h x 41d cm (36w x 48h x 16d inch), optional NEMA 4X	HydraSupply XL: Type 3R, 91w x 122h x 41d cm (36w x 48h x 16d inch), optional NEMA 4X; DC Power Supply: Type 3R, 76w x 76h x 30d cm (30w x 30h x 12d inch)	HydraSupply XL: Type 3R, 91w x 122h x 41d cm (36w x 48h x 16d inch), optional NEMA 4X	HydraSupply XL: Type 3R, 91w x 122h x 41d cm (36w x 48h x 16d inch), optional NEMA 4X; DC Power Supply: Type 3R, 76w x 76h x 30d cm (30w x 30h x 12d inch)
<b>Finish</b>	Stone gray powder coated, 2,000 hr salt spray tested			
<b>Foundation</b>	Less than 300 mm** (1 ft) concrete depth all widths up to 4.15 m (13.5 ft); less than 218 kg (480 lb) rebar; less than 3.1 m3 (4 cu yds) concrete		Less than 300 mm** (1 ft) concrete depth all widths up to 4.15 m (13.5 ft); less than 218 kg (480 lb) rebar; less than 3.1 m3 (4 cu yds) concrete (per wedge)	
<b>ETL Listed (UL 325)</b>	Control panel certified to UL 508A by ETL			
<b>Warranty</b>	5 year warranty on electronics and hydraulics w/product registration. 2 year warranty on mechanical wedge.			

\* Wedge manufactured in metric scale. Use for precision measurements. All imperial measurements rounded to nearest 1/2 ft.

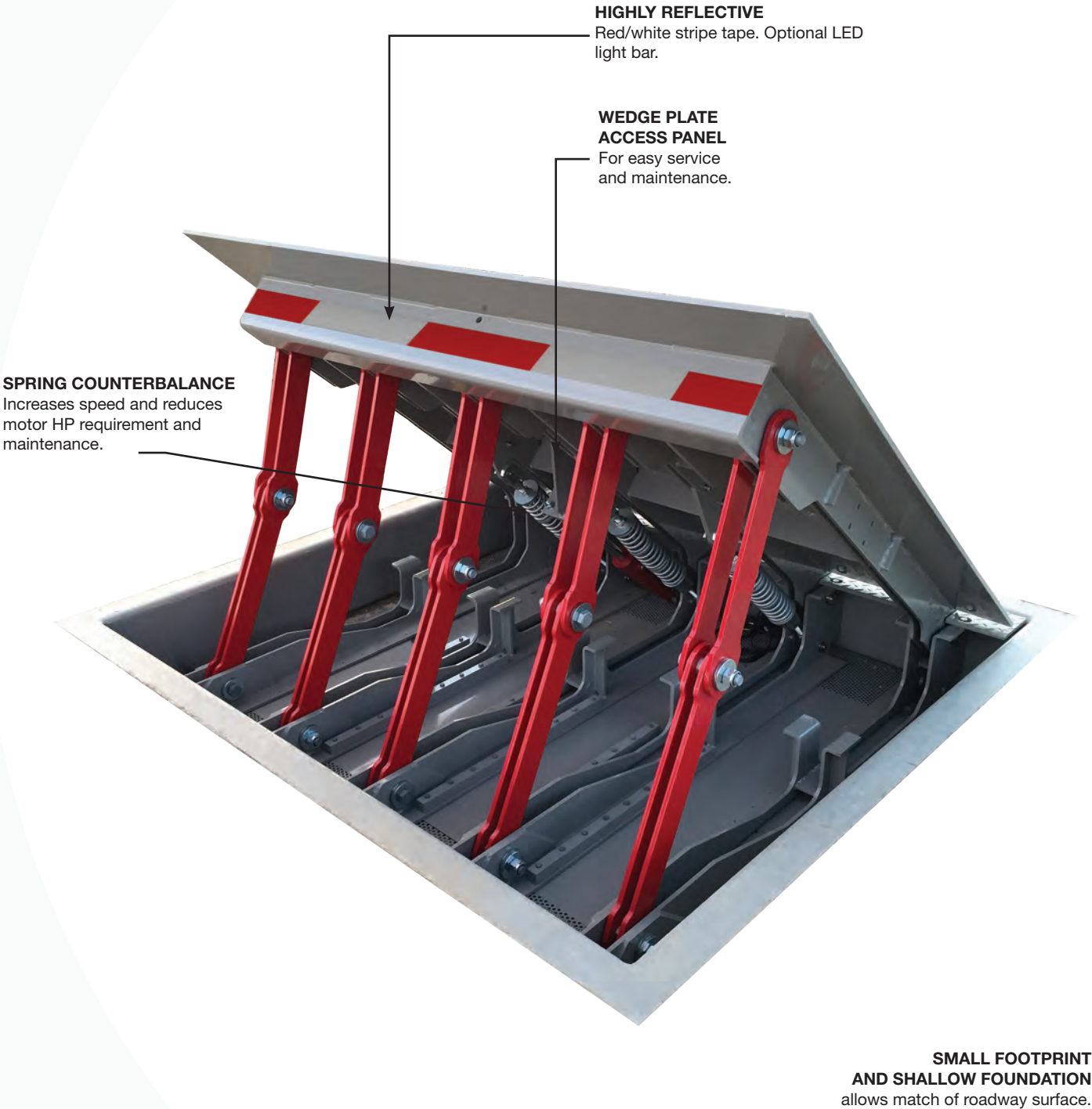
† 115 input requires 30A branch circuit.

†† Ratings: ASTM F2656-15 M50-P1 IWA14-1: 2013 PAS 68: 2013. Contact HySecurity to receive a copy of the ASTM F2656-15 M50-P1 Test Certification.

\*\* 300 mm excavation: 200 mm reinforcing concrete + 100 mm roadway surface of any material

\*\*\*The operators normal duty cycle and the actual number of combined cycles available from batteries depends upon wedge plate weight, number of batteries, state of charge and health, ambient temperature, accessory power draw and frequency of gate cycles during power outage.

# Crash-rated, hydraulic wedge barrier



**HIGHLY REFLECTIVE**  
Red/white stripe tape. Optional LED light bar.

**WEDGE PLATE ACCESS PANEL**  
For easy service and maintenance.

**SPRING COUNTERBALANCE**  
Increases speed and reduces motor HP requirement and maintenance.

**SMALL FOOTPRINT AND SHALLOW FOUNDATION**  
allows match of roadway surface.

# Crash-Rated Bollards

Stop a 15,000 lbs (6,800 kg) truck driving 30 mph/50 mph in its tracks



## Bollards M30/M50

Security doesn't need to place a burden on everyday movements.

Bollards permit free movement of pedestrian traffic, while protecting from accidental and malicious threats.

HySecurity offers a full range of fixed bollards to meet your design and security needs with a variety of ratings, finish, and light options.

M30

M50



# Bollards M30/M50



## Bollard cap choices:

---



Dome cap



Flat cap



Knight cap

## Lighted bollard choices:

---



Slotted



360°



Panorama

## Design your bollard

### Finish options

- Hot dip galvanized
- Powder coat
- Zinc rich primer

### Light options

- Glass refractor globe (dome cap)
- Stacked louver globe (flat cap)
- Cool colored LED (5000K)
- Warm colored LED (3000K)

### Stainless steel cover options

- 304 or 316 stainless
- Flat cap
- Surface mount
- Domed cap
- Knight cap

### Lighted bollard cover options

- 304 or 316 stainless
- Flat cap
- Surface mount
- Domed cap
- Slotted light opening
- Clear or opal lens
- 360° light opening

# Vehicle Theft Protection

Protect your assets – Crash-engineered FS30 rating designed to stop a full size sedan traveling at 30 MPH



## WedgeSmart™ DC

Electromechanical, UPS battery backup anti-ram wedge with parking barrier arm, engineered for millions of low maintenance cycles.

WedgeSmart DC excels at vehicle theft prevention, threat protection and access control applications requiring added security of a crash barrier.

Safety features include integrated traffic light, bright red striping on wedge, LED lighting across top of arm, resilient bumper along base of arm and kill switch which stops arm motion if struck, minimizing damage to gate, vehicle and facility.





# Expect More



## WEDGESMART DC

1 model  
Lane widths 9, 10, 12, 14 ft  
(2.7, 3, 3.7, 4.3 m)  
5 seconds up / 5 seconds down

# WedgeSmart™ DC

- Surface mounted, easy, quick installation
- Wedge integrated with highly visible lighted barrier arm and red/green traffic signal
- Move arm independent of wedge during high volume traffic
- Straight arm or articulated arm for low clearance ceilings
- UPS battery backup operates for over 150 cycles after AC power loss\*\*
- Easy to configure, program operation to site specific requirements
- In case of vehicle strike, arm breaks away and arm motion stops, protecting pedestrians, facility and operator/arm
- Four lane widths: 9, 10, 12, and 14 ft clear opening
- Engineered crash-rated\*

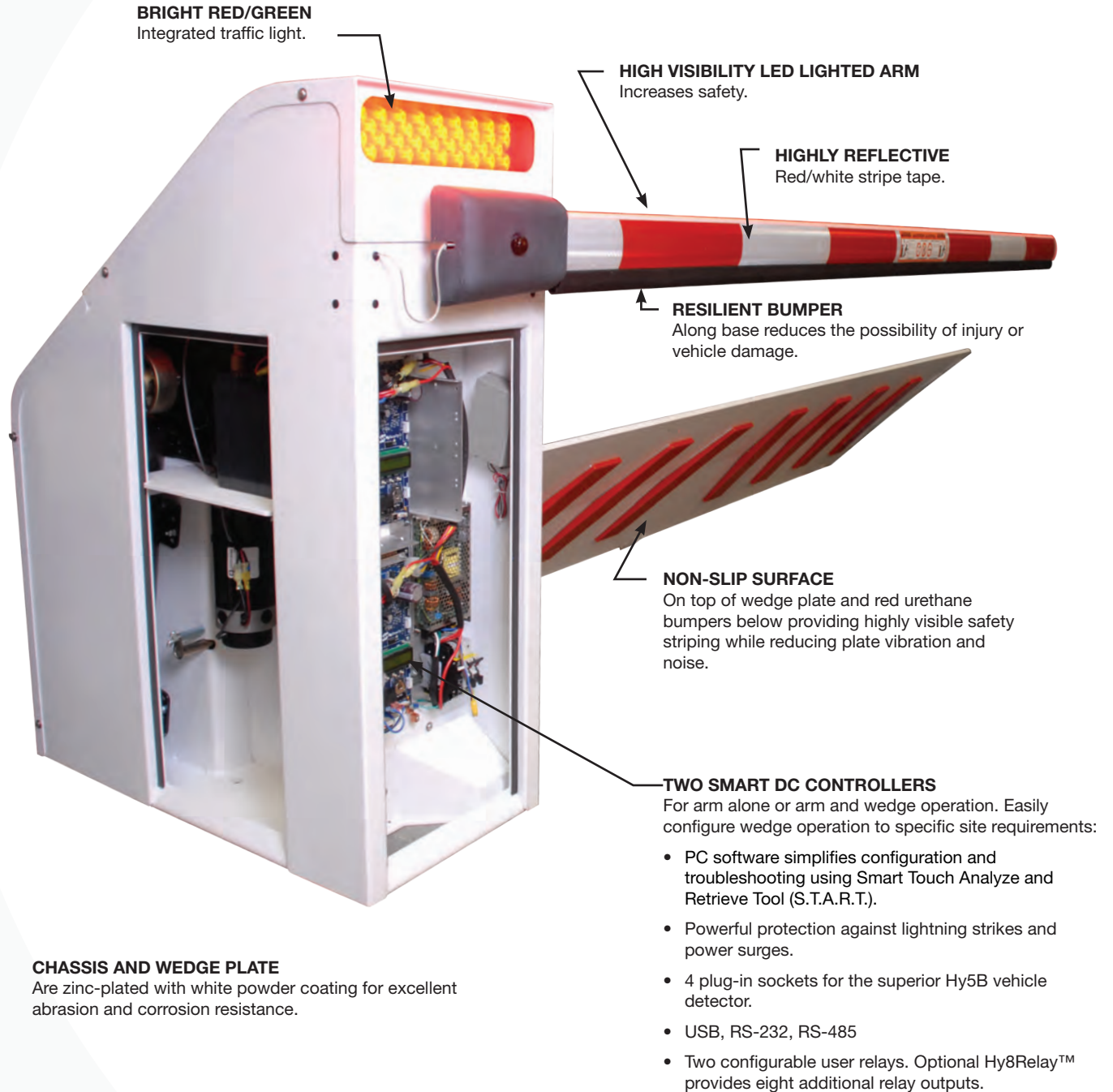
## Technical Specifications

<b>Model</b>	WedgeSmart DC
<b>Full Open Angle</b>	Arm full open angle: Adjustable 90° ± 10°
<b>Lane Width</b>	9, 10, 12 and 14 ft (2.7, 3, 3.7, 4.3 m)
<b>Duty Cycle</b>	Continuous
<b>Drive</b>	Electromechanical
<b>Open/Close Time</b>	5 seconds up / 5 seconds down
<b>UPS Battery Backup Cycles</b>	Two 12V, 50Ah batteries, Operates for over 150 cycles after AC power loss.* Field configurable to fail open or secure if batteries deplete.
<b>Temperature Rating</b>	-13° to 158° F (-25° to 70° C) No operator heater necessary. Concrete pad heater recommended under wedge plate in freezing climates.
<b>Operating Voltage</b>	24VDC
<b>Input Voltage</b>	115VAC, 3A, 60/50Hz or 208-230VAC, 1.5A, 60/50Hz
<b>Accessory Power</b>	12VDC and 24VDC 1A each
<b>Communication</b>	USB, RS-232, RS-485
<b>User Controls</b>	Smart DC Controller with 70+ configurable settings. 32 character LCD display and 5 tact buttons or a PC using S.T.A.R.T. software.
<b>Relays</b>	Two configurable user relays: 30VDC, 3A solid state and 250VAC, 10A electromechanical; Optional Hy8Relay™ for 8 additional relay outputs
<b>Finish</b>	Zinc plated with white powder coating
<b>Foundation</b>	To achieve ASTM F2656 rating**, 3000 psi flat concrete required. 10 inch min. at anchor strap area. 6 inch min. all other areas. Area under chassis and wedge plate must be flat within 1/4 inch over entire length.
<b>ETL Listed (UL 325)</b>	Control panel certified to UL 508A by ETL
<b>Warranty</b>	2 years w/product registration

\* The operators normal duty cycle and the actual number of combined cycles available from batteries depends upon wedge plate weight, number of batteries, state of charge and health, ambient temperature, accessory power draw and frequency of gate cycles during power outage

\*\* Operator is Crashed Engineered

## Surface mount wedge with barrier arm



# Next Generation industrial slide gate

Builds on a legacy of security and reliability with the new SmartTouch 725 controller



## SlideDriver™ II

Is the most secure slide gate operator with power to move any gate, customizable for every unique application.

SlideDriver II Correctional come standard with all software needed to interface with common options and interlocks used at correctional facilities.

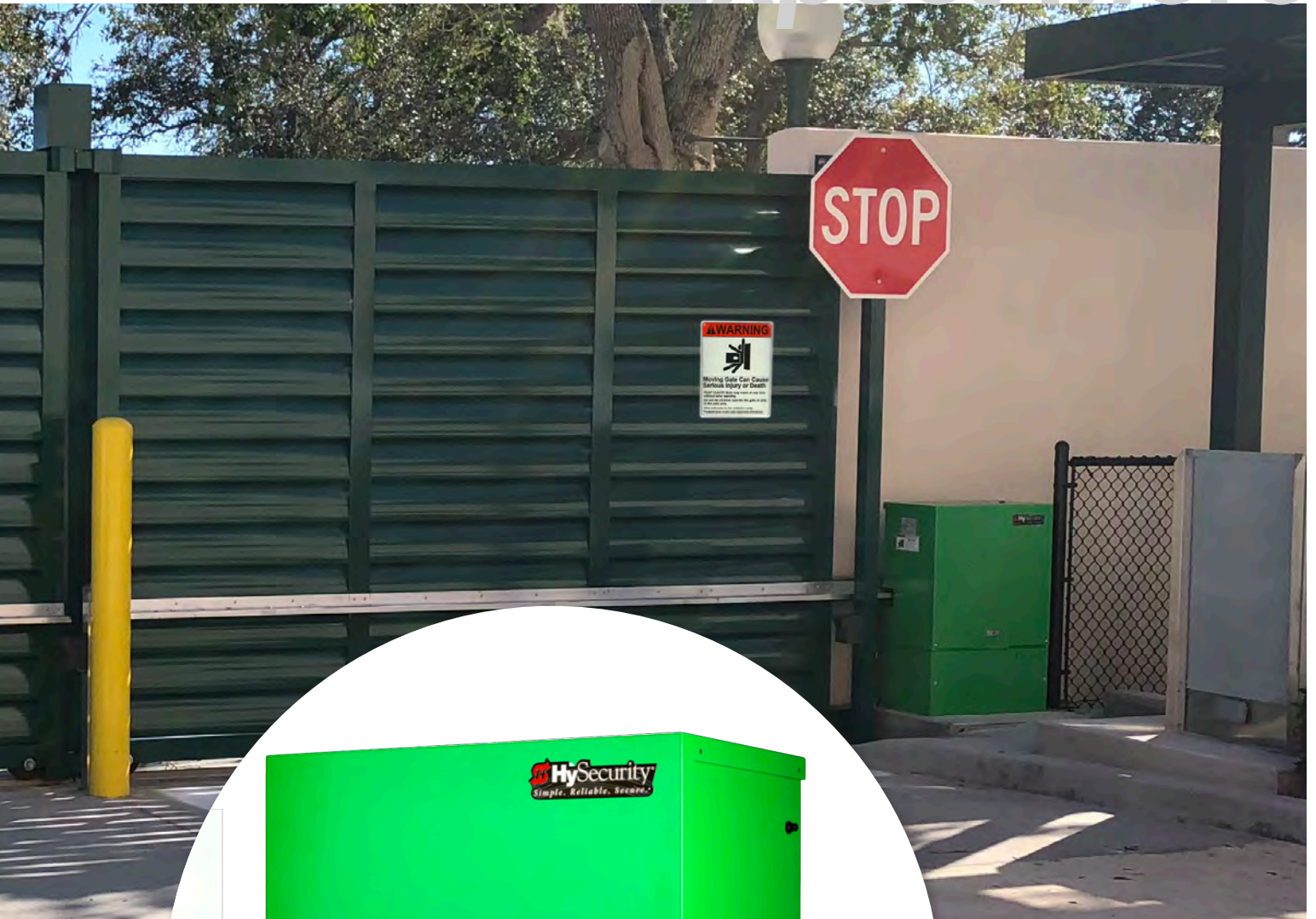
SlideDriver II Modular remotely locate most electrical components, protecting against possible ignition of combustible material.

SlideDriver II 80 and 200. Heavy gates operate even in severe weather condition: snow, blowing salt, sand and dust built up. Seamless synchronization with HySecurity operators for dual gate, sally port or sequenced gate integration.





# Expect More



**SLIDEDRIVER II**  
5 models up to 20,000 lb gates  
(9,072 kg) 1 ft/s (30 cm/s) or 3  
ft/s (70cm/s) Emergency Fast  
Operate option on SlideDriver II  
SD50F

# SlideDriver™ II

- Move gates up to 20,000 lb
- Secure steel chassis and tamper resistant cover
- UPS models remain functional during a power outage
- Configurable for specific site requirements
- Remote monitoring, management, and maintenance
- 1 - 3 ft/s operating speed. Emergency Fast Operates at 3 ft/s
- Integrated primary/secondary controls and preprogrammed relay settings
- Wide temperature range without heater
- Decades long life and low maintenance

## Technical Specifications

Model	SlideDriver II SD15	SlideDriver II SD40	SlideDriver II SD50F	SlideDriver II SD80V	SlideDriver II SD200V
Duty Cycle	Continuous				
Horsepower	1 hp	1 hp; DC Option 2 hp	2 hp		5 hp; DC**** Option 4 hp
Drive	Hydraulic		Hydraulic with VFD motor control		
Drive Wheels	Two 6 inch (15 cm) AdvanceDrive wheels		Two 8 inch (20 cm) AdvanceDrive wheels	One 8 inch (20 cm) AdvanceDrive wheel, One 8 inch XtremeDrive wheel and 27 ft (8 m) of rack	Two 8 inch (20 cm) AdvanceDrive wheels, Two 8 inch XtremeDrive wheels and 52 ft (16 m) of rack
Rate of Travel	1 ft/s (30 cm/s)		Field adjustable, 2.2 ft/s (70 cm/s) or 3 ft/s (91 cm/s). Emergency Fast Operate 3 ft/s (91 cm/s)	Field adjustable, .75 ft/s (23 cm/s) or 1 ft/s (30 cm/s).	
Gate Length Max.	Limited only by weight				
Gate Weight Max.	Up to 1,500 lb (680 kg)	Up to 4,000 lb (1,814 kg)	Up to 5,000 lb (2,268 kg)	Up to 8,000 lb (3,629 kg)	Up to 20,000 lb (9,072 kg)
Pull Force	300 lb (136 kg)			600 lb (272 kg)	1,200 lb (544 kg)
UPS Battery Backup Cycles*	Optional 230V AC Power Supply w/HyInverter AC™	Select option SB-2-2J for DC configuration. Requires DC Power Supply DCPS-60, purchased separately.	Optional 230V AC Power Supply w/HyInverter AC™		Select option SB-2-2T for DC configuration. Requires DC Power Supply DCPS-150 ordered separately.**
Temperature Rating	-40° to 158° F (-40° to 70° C)				
Single Phase Voltages	115/208-230V 60 Hz, 110/220V 50 Hz***		208-230V 60Hz,220V 50Hz***		N/A
Three Phase Voltages	208-230/460V 60Hz,220/380/440V 50Hz***				
Included Accessories	One premium EMX IRB-MON photo eye, one 5-foot premium ASO edge sensor				N/A
Communication	BlueBUS, USB, Ethernet, RS-485, Bluetooth, OXI receiver				
User Controls	SmartTouch 725 Controller with 70+ configurable settings. 32 character OLED display and 7 tactile buttons, or Bluetooth smartphone interface, for programming. SmartTouch 720 Available without Bluetooth or Ethernet.				
Relays	8 Configurable relays: Two 250V 20A electromechanical relays and six 30VDC 2A solid state relays		Three configurable user relays: Two 30VDC 2A solid state, one 240VAC, 20A electromechanical. Optional I/O Expansion module for 8 additional relay outputs.		
Enclosure	N/A				
Finish	Zinc plated with powder coating				
ETL Listed (UL 325)	Usage Class I, II, III, IV		Usage Class III, IV		
Warranty	5 year w/product registration				

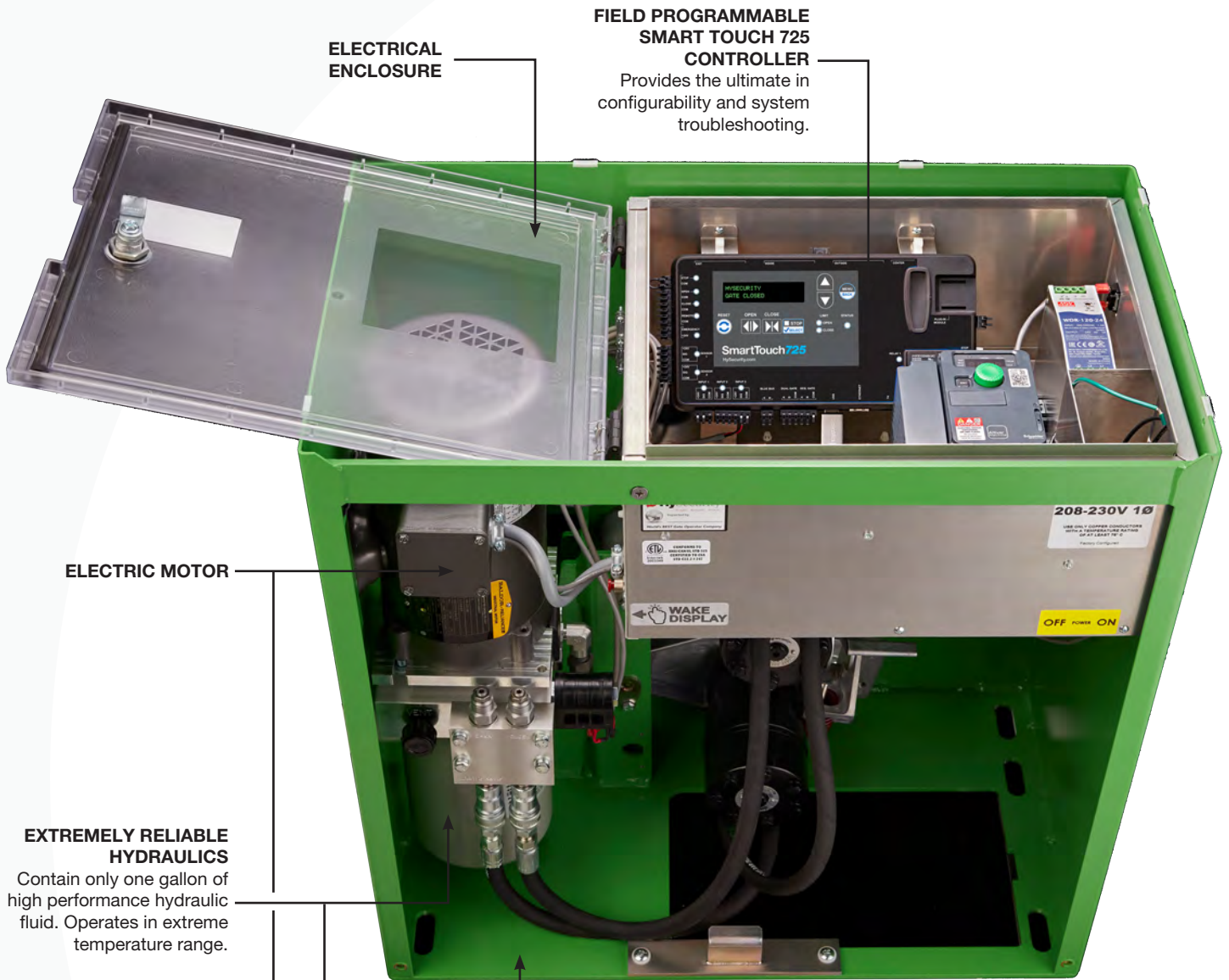
\*The actual number of gate cycles available from battery power depends upon gate resistance to travel, cycle length, battery size, state of charge and health, ambient temperature, accessory power draw and frequency of gate cycles during power outage.

\*\*SlideDriver II SD200 UPS has a 2,000 ft/hr (610 m/hr) expected duty cycle. Actual duty cycle depends on site specific conditions and gate configuration.

\*\*\*Refer to Installed Options on pricing for all 50Hz voltages, which are special order.

\*\*\*\* SD200VDC uses a DC motor controller with an I/O expansion model





**ELECTRICAL ENCLOSURE**

**FIELD PROGRAMMABLE SMART TOUCH 725 CONTROLLER**  
 Provides the ultimate in configurability and system troubleshooting.

**ELECTRIC MOTOR**

**EXTREMELY RELIABLE HYDRAULICS**

Contain only one gallon of high performance hydraulic fluid. Operates in extreme temperature range.

**SECURE UNI-BODY WELDED CHASSIS**

Constructed with rigid 12 gauge sheet metal and protected with ultra durable polyester powder coat over zinc plating for an enduring attractive finish.

**INDUSTRIAL GRADE COMPONENTS**

Ensure extremely low maintenance and exceptionally long life.



# Compact power for large swing gates or high-wind applications

Maximum muscle, supreme hydraulic linear actuator



## HydraSwing™

Ultimate power in a low profile, perfect for large ornamental swing gates and high wind applications

HydraSwing is a powerful, rugged, industrial grade linear swing gate actuator. Confidently cycle up to 40 ft / 15,000 lb gate leaf even in extreme peak winds. Proven reliable hydraulics and industrial grade components mean low maintenance and long operator life. Configure gate to exact user needs using Smart Touch Controller and START (Smart Touch Analyze and Retrieve Tool)





# Expect More



**HYDRASWING**  
Model 80F and 150 chassis  
dimensions:  
41" L x 20 1/2" (104 x 52 cm)  
optional base extension adds an  
additional 4 inches to the width

# HydraSwing™

- Up to 15,000 lbs (6,800 kg) / 12m per leaf
- Soft-start, soft-stop
- UPS backup with optional AC Power Supply w/HyInverter AC™
- Configurable for specific site requirements
- Field programmable to specific site requirements
- Real time security alerts
- Dual or sequenced gate integration
- Easy system troubleshooting with onboard event log
- Heavy duty chassis, industrial grade components

## Technical Specifications

Single or Twin	Single leaf	Twin (2 leaves)	Single leaf	Twin (2 leaves)	Single leaf
<b>Duty Cycle</b>	Continuous				
<b>Drive</b>	VFD controlled Hydraulics				
<b>Open/Close Time</b>	15-20 seconds, field adjustable**		10-15 seconds, field adjustable**		15-25 seconds, field adjustable**
<b>Gate Length Max.</b>	up to 24 ft (7.3 m)*	up to 16 ft (5 m) wide each leaf*	up to 16 ft (5 m) wide*	up to 16 ft (5 m) wide each leaf*	up to 30 ft (9 m) wide*
<b>Gate Weight Max.</b>	4,000 lb (1,814 kg)*	4,000 lb (1,814 kg) / leaf*	4,000 lb (1,814 kg)*	4,000 lb (1,814 kg) / leaf*	8,000 lb (3,629 kg)*
<b>UPS Battery Backup Cycles</b>	Optional 230V AC Power Supply w/HyInverter AC™***				
<b>Temperature Rating</b>	-40° to 158° F (-40° to 70° C)				
<b>Single Phase Voltages</b>	208/230V 50/60Hz, 208/230V 50/60Hz				
<b>Three Phase Voltages</b>	208/230V 50/60Hz or 380/460V 50/60Hz				
<b>Communication</b>	RS-232, RS-485				
<b>User Controls</b>	Smart Touch Controller with 70+ configurable settings. Smart Touch keypad and 32 character, OLED display or a PC using S.T.A.R.T. software.				
<b>Relays</b>	Three configurable user relays: one 30VDC, 3A solid state and two 250VAC, 10A electromechanical. Optional Hy8Relay™ for 8 additional relay outputs.				
<b>Enclosure</b>	Type 3R, 30w x 42h x 12d inch (76w x 107h x 30.5d cm)				
<b>Finish</b>	Zinc plated steel chassis with stainless steel cover			3/4 inch zinc plated steel chassis with black powder coated steel cover	
<b>ETL Listed (UL 325)</b>	Usage Class I, II, III, IV			Usage Class III, IV	
<b>Warranty</b>	5 year w/product registration				

\* Gate length/weight specifications are dependent on height, percentage of open area on panel and anticipated wind speed.

\*\* Actual open/close time dependent on gate weight/length, percentage of open area on panel and anticipated wind speed.

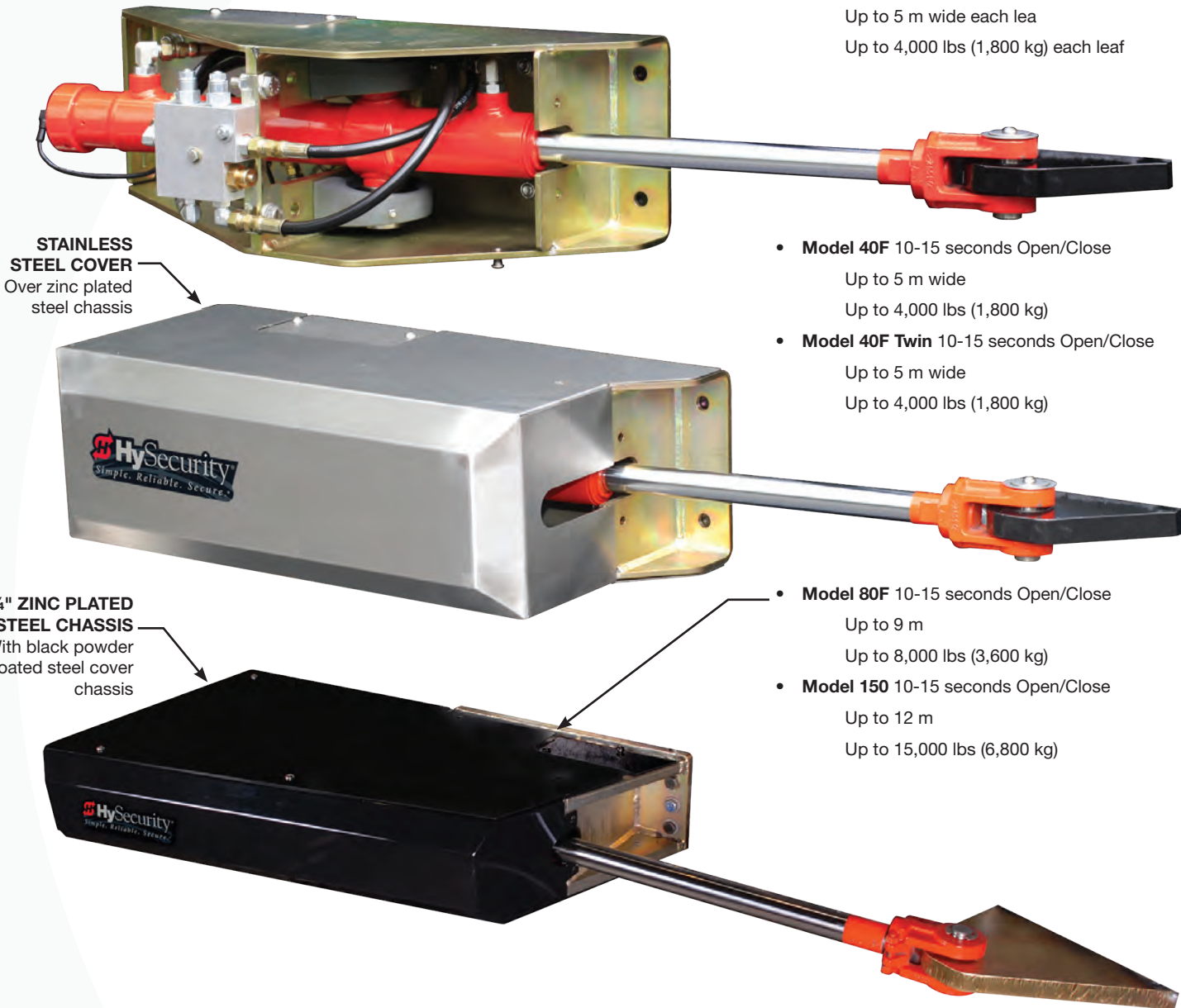
\*\*\* The operator's normal duty cycle and the actual number of gate cycles available from battery depends upon gate resistance to travel, cycle length, battery size, state of charge and health, ambient temperature, accessory power draw and frequency of gate cycles during power outage.

**HYDRAULIC SWING GATE ACTUATORS**

- **Model 40** 15-20 seconds Open/Close  
Up to 7.3 m wide  
Up to 4,000 lbs (1,800 kg)
- **Model 40 Twin** 15-20 seconds Open/Close  
Up to 5 m wide each leaf  
Up to 4,000 lbs (1,800 kg) each leaf

- **Model 40F** 10-15 seconds Open/Close  
Up to 5 m wide  
Up to 4,000 lbs (1,800 kg)
- **Model 40F Twin** 10-15 seconds Open/Close  
Up to 5 m wide  
Up to 4,000 lbs (1,800 kg)

- **Model 80F** 10-15 seconds Open/Close  
Up to 9 m  
Up to 8,000 lbs (3,600 kg)
- **Model 150** 10-15 seconds Open/Close  
Up to 12 m  
Up to 15,000 lbs (6,800 kg)



**STAINLESS STEEL COVER**  
Over zinc plated steel chassis

**3/4" ZINC PLATED STEEL CHASSIS**  
With black powder coated steel cover chassis

**BASED ON THE SAME HYDRAULIC CYLINDER TECHNOLOGY USED IN THE M30 & M50**

The hydraulic cylinder contains an absolute positioning sensor used for tracking the precise position of the cylinder's piston with respect to the attached gate or arm.

**SIX MODELS BASED ON GATE WEIGHT – AND SPEED**

Fast models reduce open/close speeds by ~5 secs. Similar to the SwingRiser, Twin models powered by a single HydraSupply.

# Outperforms, outlives OEM systems

Little or no site work to impair facility use, or compromise security.



## HydraSupply XL™

**HydraSupply XL Retrofit\*** most vehicle barrier HPU's at a fraction of the cost of complete wedge replacement.

\*Retrofit Delta Scientific, Ross Technology, Nasatka, B&B ARMOR, SecureUSA® APSG, Ameristar®, FutureNet, Western Industries, others ...



# Expect More

1



**HYDRASUPPLY XL**  
Model Dimensions:  
36" L x 48 1/2" H  
Up to hundreds of cycles

# HydraSupply XL™

- 5 year warranty. Unparalleled reliability
- Available single acting for gravity return or double acting for powered return
- Heavy duty
- Up to hundreds of cycles after AC power loss with DC Power Supply with HyCharger DC
- 3 - 5 seconds Open/Close. 1 - 2 second FAST EFO. Dependent on wedge specs.
- No crane required. Light enough to install with loader or forklift
- Integrated manifold with state of the art cartridge valves yields high performance in a compact, easy to service, package
- Small system footprint. Compact power and control design reduces system footprint to a fraction of competitors

## Technical Specifications

Model	HydraSupply XL Single Acting AC	HydraSupply XL Double Acting AC	HydraSupply XL Single Acting DC	HydraSupply XL Double Acting DC
Duty Cycle	100/hr depends on wedge			
Horsepower	5 hp		4 hp	
Drive	Hydraulic			
Open/Close Time	3-5 seconds, dependent on wedge specs			
Emergency Fast Operate	1-2 seconds, dependent on wedge specs			
Manual Operation	Hand pump (standard)			
UPS Battery Backup Cycles	Generates multiple cycles from fully charged accumulator.			
Accumulator	2.5 or 5 gallon	5 gallon	2.5 or 5 gallon	5 gallon
Temperature Rating	-40° to 158° F (-40° to 70° C) or -10° to 158° F (-23° to 70° C) HySecurity specified biodegradable fluid			
Single Phase Voltages	230V 60Hz,220V 50Hz*	230V 60Hz,220V 50Hz*	115V 50/60Hz 23A*** or 208-230V 50/60Hz 11.5A	
Three Phase Voltages	208-230/460V 60Hz,220/380/440V 50Hz		n/a	
Batteries	Two 8Ah batteries power low voltage controls for 24 hours after AC power loss		Two 110 Ah batteries located in separate DC UPS enclosure	Two 110Ah batteries located in separate DC UPS enclosure
Communication	RS-232, RS-485			
User Controls	Smart Touch Controller with 70+ configurable options. Smart Touch keypad and 32 character, OLED display or a PC using S.T.A.R.T. software			
Relays	Three configurable user relays: one 30VDC, 3A solid state and two 250VAC, 10A electromechanical. Optional Hy8Relay™ for 8 additional relay outputs.			
Enclosure	HydraSupplyXL: Type 3R, 91w x 122h x 41d cm (36w x 48h x 16d inch), optional NEMA 4X		HydraSupply XL: Type 3R, 91w x 122h x 41d cm (36w x 48h x 16d inch), optional NEMA 4X; DC Power Supply: Type 3R, 76w x 76h x 30d cm (30w x 30h x 12d inch)	
Finish	Gray polyester powdered paint finish over galvanized steel			
ETL Listed (UL 325)	Control panel certified to UL 508A by ETL			
Cylinder Size	up to four 2 x 12 inch cylinders or one 4 x 12 inch cylinder			
Reservoir	7 gallon			
Warranty	5 year			

\* HydraSupply XL retrofits most manufacturer's vehicle barrier wedges. Contact HySecurity sales at 800-321-9947 to confirm wedge specifications

\*\* The operator's normal duty cycle and the actual number of combined cycles available from batteries depends upon wedge plate weight, number of batteries, state of charge and health, ambient temperature, accessory power draw and frequency of gate cycles during power outage.

\*\*\* 115V input requires 30A branch circuit.





### HYDRASUPPLY XL™

- Light enough to install with loader or forklift. No crane required.
- Heavy duty, thousands of cycles per day.
- Also retrofits other manufacturers wedges.

### FOUR B/U CYCLES

On accumulator after power outage.\*  
Four b/u cycles divided between twin wedges.\*

\*Hundreds of UPS backup cycles with HydraWedge SM50 UPS

### HAND PUMP

For manual operation.

# Push Button Control Panel Solutions

Controls for attended vehicle access points

## Versatile Mounting Options

The control panel has a sturdy mount with adjustable height and angle. It's also compatible with VESA standard mounts for any conceivable arrangement.

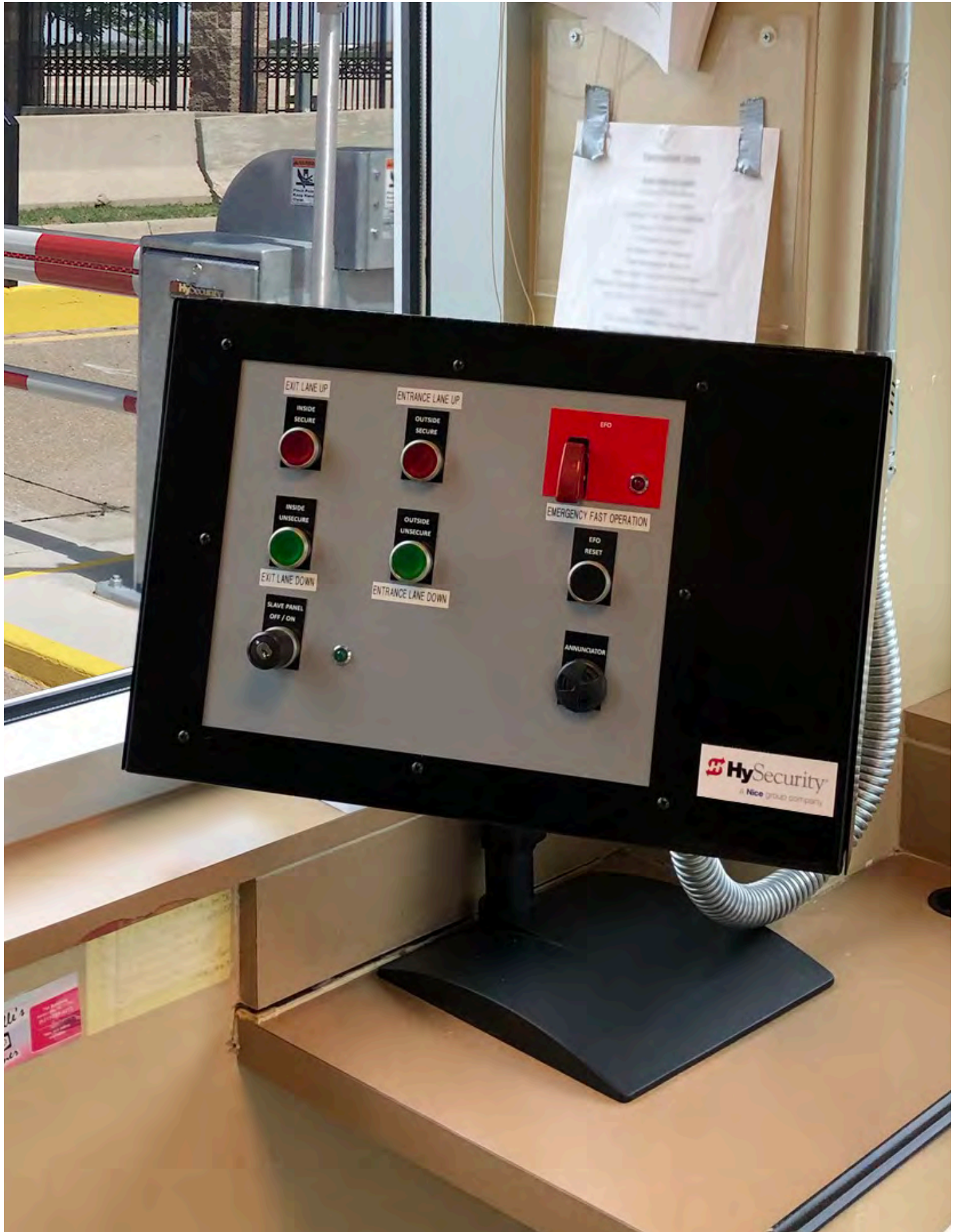
## Expert Design Assistance

HySecurity offers custom design and installation services, giving you confidence of a job done right.

Attended vehicle access points that use automated barriers and gates require intuitive, reliable controls to clear traffic efficiently and to provide straightforward and secure ways to deploy protection when threats emerge.

Push button control panels are the perfect interface to a HySecurity gate operator or barrier. They can control up to four operators per panel. Gate sequences and interlocks are effortless using the operator's embedded primary/secondary interface.

- Designed specifically to work with HySecurity barriers and gate operators.
- Customizable for site specific needs
- Buttons rated IP69k (submersible) for reliability
- Pedestal mount monitor style enclosure
- Adjustable height
- Adjustable angle
- VESA mount compatible for ultimate flexibility
- Key lockable panel for added security
- Low voltage wiring for safety
- Primary/secondary controls available



# HMI Control Panel Solutions

Touch screen controls for hardened vehicle access points

When coordinating multiple lanes of traffic or access points, a touch screen Human-Machine Interface (HMI) brings an intuitive graphic interface to streamline the management, control and security of automated barriers and gates -- helpful in day-to-day operations but critical in emergency situations.

## Control from Anywhere

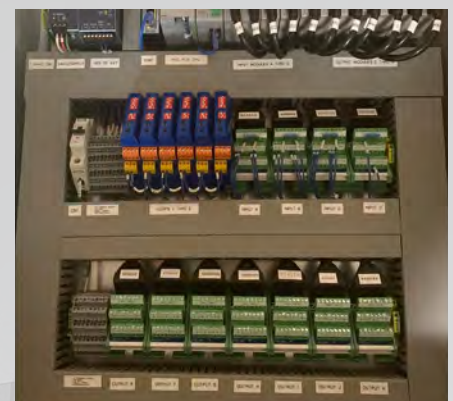
Integrate a control panel remotely at the SOC or connect from anywhere over secure TCP/IP

## Expert Design Assistance

HySecurity offers custom design and installation services, giving you confidence of a job done right.



Back side of the HMI with connectors



Control rack

HMI enclosures provide more sophisticated control to a basic push button system by adding flexibility to sequenced operations while enhancing safety, visual monitoring, and data collection.

HySecurity offers a range of control panel solutions to fit the needs of any hardened vehicle access point.

- HMI integrated in pedestal mount enclosure
- High resolution touch screen display with 64k color and up to 1024x768 pixels
- Three Ethernet ports
- Additional control inputs
- and alarm outputs for expansion
- Data logging on removable media (USB or SD card)
- Programmable Automation Controller (PAC) integrates main and remote HMI
- Battery backup for 4-7 hours
- NEMA 4 (IP66) enclosure
- Fiber, Ethernet, or RS485 communication
- Optional wireless communication
- Optional remote access and monitoring

## Technical Specifications

	HDMI package 1 8-inch color screen	HDMI package 2 10-inch color screen	HDMI package 3 12-inch color screen	HDMI package 4 15-inch color screen
<b>Screen Type</b>	TFT, ANALOG RESISTIVE	TFT, ANALOG RESISTIVE	TFT, ANALOG RESISTIVE	TFT, ANALOG RESISTIVE
<b>Enclosure Dimensions</b>	330 mm X 160 mm X 92 mm H X W X D	330 mm X 160 mm X 92 mm H X W X D	330 mm X 160 mm X 92 mm H X W X D	330 mm X 160 mm X 92 mm H X W X D
<b>Display Viewing Area</b>	170 mm X 128 mm	211 mm X 158 mm	246 mm X 184 mm	304 mm X 228 mm
<b>Screen Pixel</b>	800 x 600 (SVGA)	800 x 600 (SVGA)	800 x 600 (SVGA)	1024 x 768 (SVGA)
<b>Color Scale</b>	65,536 COLORS	65,536 COLORS	65,536 COLORS	65,536 COLORS
<b>Project Memory</b>	26MB	26MB	82MB	82MB
<b>Number of Screens</b>	UP TO 999 - LIMITED BY PROJECT MEMORY	UP TO 999 - LIMITED BY PROJECT MEMORY	UP TO 999 - LIMITED BY PROJECT MEMORY	UP TO 999 - LIMITED BY PROJECT MEMORY
<b>Clock / Calendar</b>	YES/YES	YES/YES	YES/YES	YES/YES
<b>Com Ports</b>	3 Serial, 1 ENET, 2 USB	3 Serial, 1 ENET, 2 USB	3 Serial, 2 ENET, 2 USB	3 Serial, 2 ENET, 2 USB
<b>Audio Line Out</b>	YES	YES	YES	YES
<b>HDMI Video Out</b>	N/A	N/A	HDMI (TYPE A)	HDMI (TYPE A)
<b>SD Card Slot</b>	1- 2GB (SD) TO 32GB (SDHC)	1- 2GB (SD) TO 32GB (SDHC)	2- 2GB (SD) TO 32GB (SDHC)	2- 2GB (SD) TO 32GB (SDHC)
<b>Supply Power</b>	110VAC, 5A	110VAC, 5A	110VAC, 5A	110VAC, 5A
<b>Power Consumption</b>	18.0 W, .75A @24VDC	18.0 W, .75A @24VDC	21.0 W, .88A @24VDC	21.0 W, .88A @24VDC
<b>Ethernet Port</b>	3	3	3	3
<b>Convenience 110 VAC Receptacle</b>	1	1	1	1
<b>Operating Temp</b>	-20 to +60°C (-4 to + 140°F)	-20 to +60°C (-4 to + 140°F)	-20 to +60°C (-4 to +140°F)	-20 to +60°C (-4 to +140°F)
<b>Agency Approvals</b>	UL508, E157382 CE (EN61131-2), RoHS (2011/65/EU) CUL Canadian C22.2	UL508, E157382 CE (EN61131-2), RoHS (2011/65/EU) CUL Canadian C22.2	UL508, E157382 CE (EN61131-2), RoHS (2011/65/EU) CUL Canadian C22.2	UL508, E157382 CE (EN61131-2), RoHS (2011/65/EU) CUL Canadian C22.2

# Operational and Breach Alerts

Alert, reporting and activation examples

## Security monitoring and breach reporting

- Unauthorized vehicle entry
- Anti-tailgating mode
- Vehicle loitering
- Gate open too long
- Gate forced open

## Gate malfunction alert

- Gate failure
- AC power failure
- Malfunction of vehicle detector or loop (requires Hy5B™ vehicle detector)

## Gate operation and display

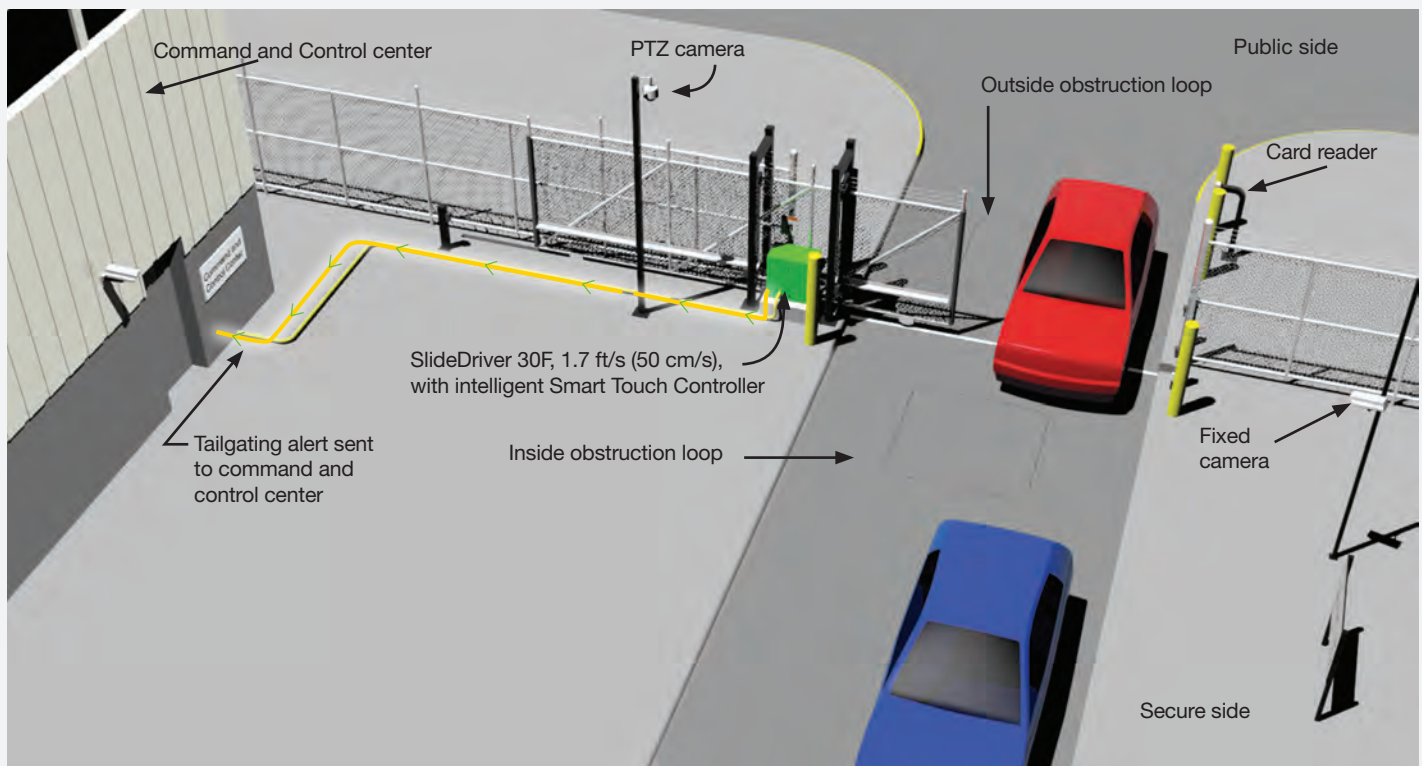
- Seamless synchronization with all HySecurity operators for dual gate, sally port or sequenced gate integration
- Easy installation configuration
- Trigger cameras, floodlights, sirens, flashers
- Gate external lock activation/deactivation

## Safety and alerts

- Warn before and/or during operation buzzer
- Actuate visible or audible alerts before and/or during operation
- Safe mode: If any sensor is triggered, gate stops and reverses
- Entrapment mode: Two successive sensor activations (gate hits) requires manual operator reset

## Real-time communication to site security system

- Security breach or system operational malfunctions
- RS-485 port for network protocols or connections
- Dry contact connection to one or more Smart Touch user relays

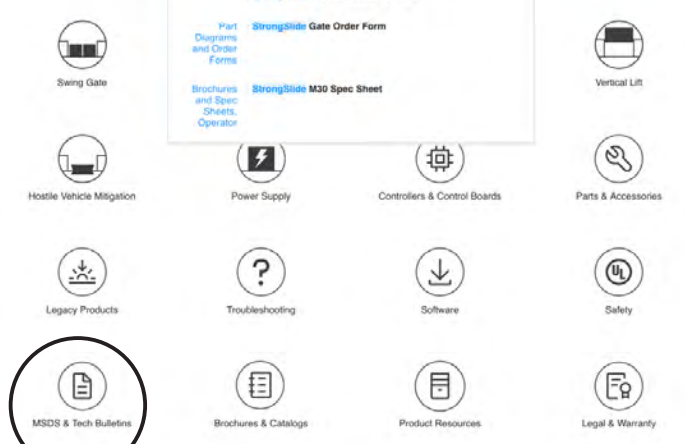
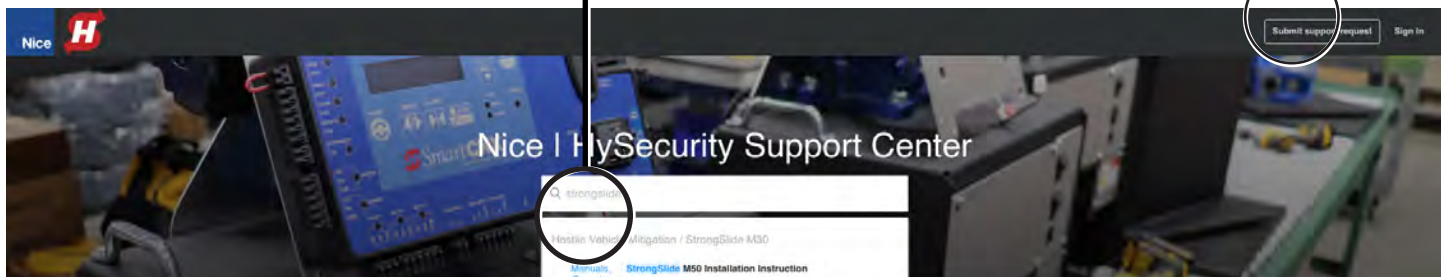


# Support site

Get instant answers by visiting our technical support site at [support.hysecurity.com](http://support.hysecurity.com)

Search by keyword

Submit help ticket



View by category

## Still need assistance?

We provide professional tech support via our direct phone number – call or text us at 253-201-2918.



**Jeff Ferguson**  
 HVM Product Sales Manager  
 jferguson@hysecurity.com  
 +1 714 323 1249

**Brian Haproff, CAGOI**  
 HVM Product Specialist  
 bhaproff@hysecurity.com  
 +1 206 653 4548



[support.hysecurity.com](https://support.hysecurity.com)

**Nice/HySecurity is an industry leader of automated gate and perimeter security solutions.**  
*The HySecurity brand provides high-quality, ultra-reliable industrial gate operators and crash-rated, Hostile Vehicle Mitigation (HVM) vehicle barriers designed to secure and protect critical infrastructure and facilities worldwide.*



[Niceforyou.com](https://www.niceforyou.com)

©2024 Nice North America LLC. All rights reserved.  
 HySecurity is a registered trademark of Nice North America LLC.  
 All trademarks, logos and brand names are the property of their respective owners.