

MBAR/LBAR

Road access Control



Nice

Electromechanical barrier system

New generation road access control system now with easier programming interface, improved limit switches, and stronger motor. Better encoder provides smoother motion throughout the open/close cycle.



24DC operator



Long arms

From 8 to 29 ft



No blackouts:

Optional battery backup available to maintain operation in case of power outage



Optional flashing:

Or traffic light can be integrated in cover



Obstacle detection:

Reverse arm on contact



Dual gate pairing:

Through primary/secondary communication



Energy saving:

Automatically switches to standby mode when idle to reduce consumption



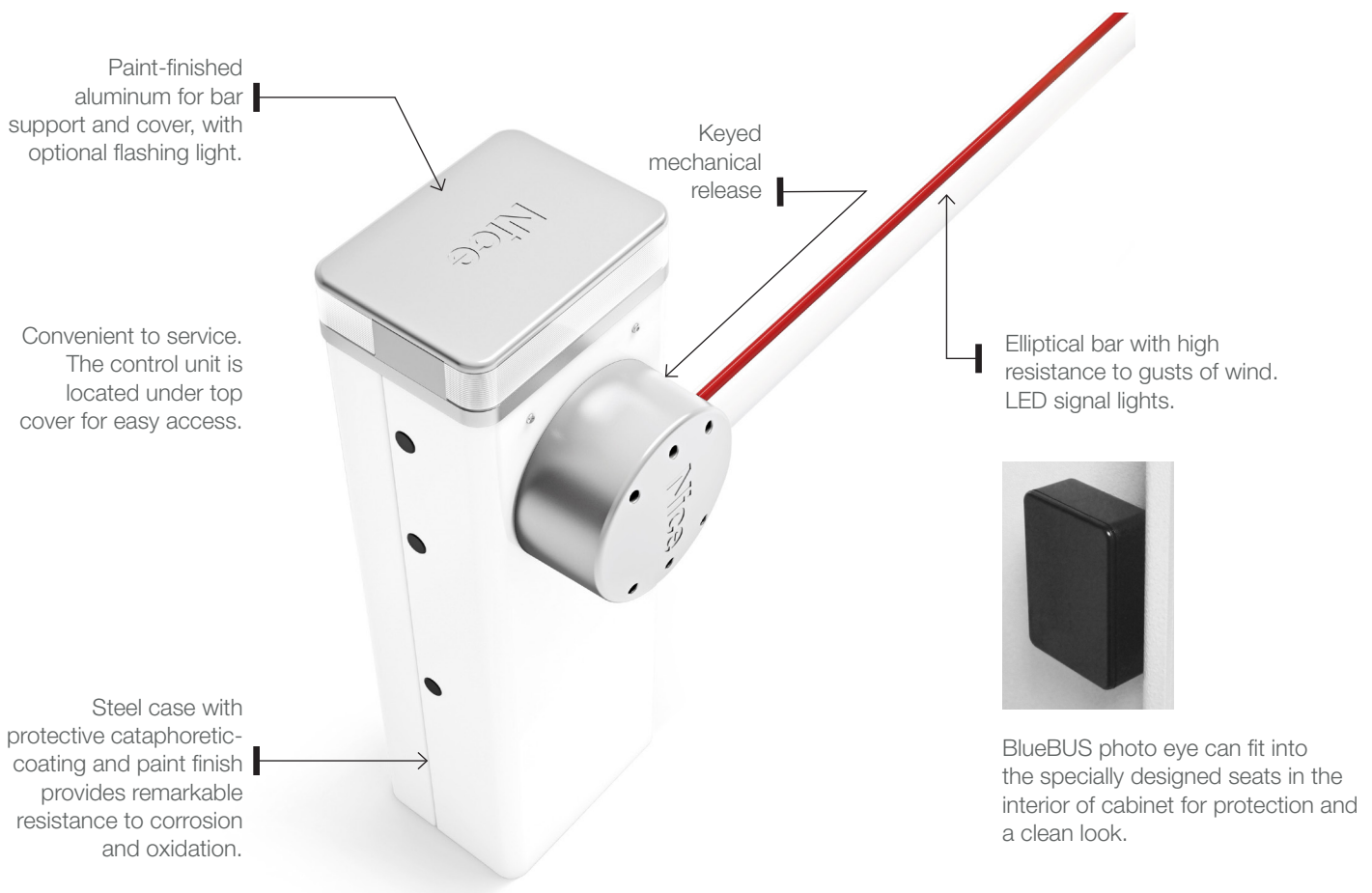
Smooth movement:

Through full cycle. Limit sensing integrated in adjustable hard stops.



Solar option:

Available



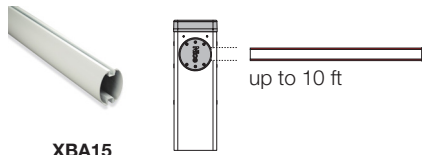


Modular: Arms of different length are assembled from standard sections connected with an aluminum expansion joint. Elliptical shape reduces wind loads.

Strength and reliability: Powder coated structural steel enclosure for long life. High strength steel balance springs guaranteed up to 1,000,000 cycles.

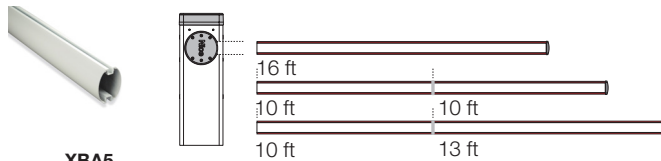
Arm opening coverage per model

M3BAR



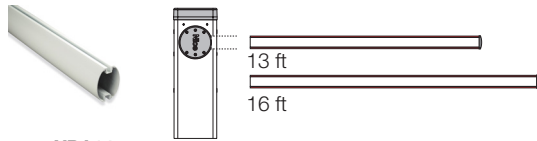
XBA15
10 ft
White paint-finished aluminum bar

M7BAR



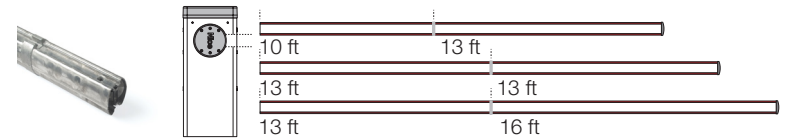
XBA5
16 ft
White paint-finished aluminum bar

M5BAR



XBA14
13 ft
White paint-finished aluminum bar

L9BAR

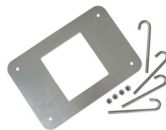


XBA9
Expansion joint.

Nice accessories to complete your MBAR & LBAR system:



XBA16
MBAR plate kit



XBA17
LBAR plate kit



XBA5, XBA14 & XBA15
Barrier arm



XBA9
Expansion joint



XBA10
Break-away pivoting connection for bars up to 13 ft



XBA11
Articulating joint for bars up to 13 ft



PS224
24VDC battery back-up



SPXBA3U
Spare control unit after October, 2023



BCU1
Spare control unit after May, 2019



WA11
Adjustable stand for bars



WA12R01
Mobile stand for bars



XBA13
Rubber impact protection strip



WA10
Red adhesive reflector strips



XBA7
Flashing light for XBA series



XBA8
Integrable traffic light



XBA4
XBA6
Indicator lights. 19.7 ft
XBA18
Indicator lights. 26.2 ft



OVIEW/A
Programming device for the 1050 and XBA3/U boards



OVBT
Bluetooth connection module for OView interface

BCU1 Control Board



- New 3 character display
- New joystick and wheel control for menu navigation
- Improved user interface
- Improved motion control for faster, smoother operation
- IBT4N Input
- Safety input for breakaway arm
- 24V 500mA output for accessory power
- 4 programmable digital inputs
- 3 digital outputs
- Low standby current for solar applications
- 2 digital inputs for vehicle detectors



	M3BAR	M5BAR	M7BAR	L9BAR
Arm Length Max.	8 to 10 ft (2.4 to 3 m)	10 to 16 ft (3 to 5 m)	16 to 23 ft (5 to 7 m)	23 to 29 ft (7 to 8.9 m)
Field adjustable Open/Close Time	1.5 - 4 seconds	3 - 6 seconds	6 - 10 seconds	8 - 10 seconds
Full Open Angle	Adjustable to 90° (recommended to limit at 87°)			
Ingress Protection	IP44			
Handing	Universal: field adaptable for left hand or right hand installations			
Arm Design	Aluminum arm with red adhesive reflector and optional lights/bumper strips			
Duty Cycle	500 cycles/hr	350 cycles/hr	200 cycles/hr	150 cycles/hr
Drive	Electromechanical			
Operating Voltage	24VDC			
Input Voltage	120VAC 60/50Hz			
Idle Current	1.3mA	1.1mA	1.1mA	1.3mA
Accessory Power	24VDC			
Temperature Rating	-4° to 122° F (-20° to 50° C)			
Communication	Optional Oview programmer, OVBT			
User Controls	BCU1 Control Board			
Relays	4 programmable voltage outputs			
Finish	Cataphoretic coating and paint finish			
ETL Listed (UL 325)	Usage Class I, II, III, IV			
Cycle Tested	1 million cycles			
Warranty	3 year w/product registration			

* For solar applications, a second enclosure for larger batteries may be required, and a separate solar regulator will be necessary.



support.hysecurity.com



Niceforyou.com

©2023 Nice North America LLC. All rights reserved.
HySecurity is a registered trademark of Nice North America LLC.
All trademarks, logos and brand names are the property of their respective owners.

948109606 Rev-E 11/2023 D0819