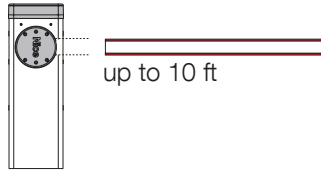


M-Bar / L-Bar

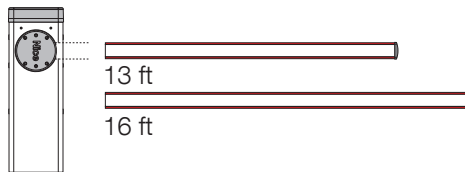
Part Diagrams

Arms

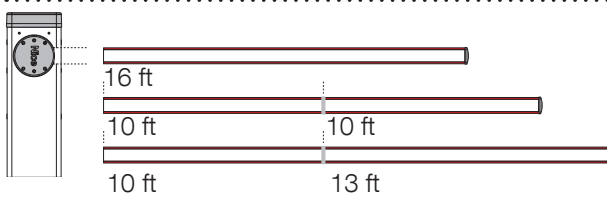
M3BAR



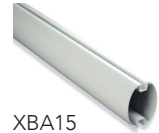
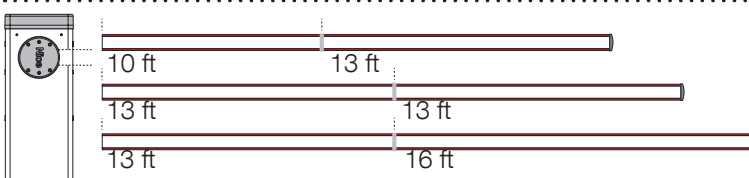
M5BAR



M7BAR



L9BAR



XBA15
10 ft
White paint-finished
aluminium bar



XBA14
13 ft
White paint-finished
aluminium bar



XBA5
16 ft
White paint-finished
aluminium bar



XBA9
Expansion joint.

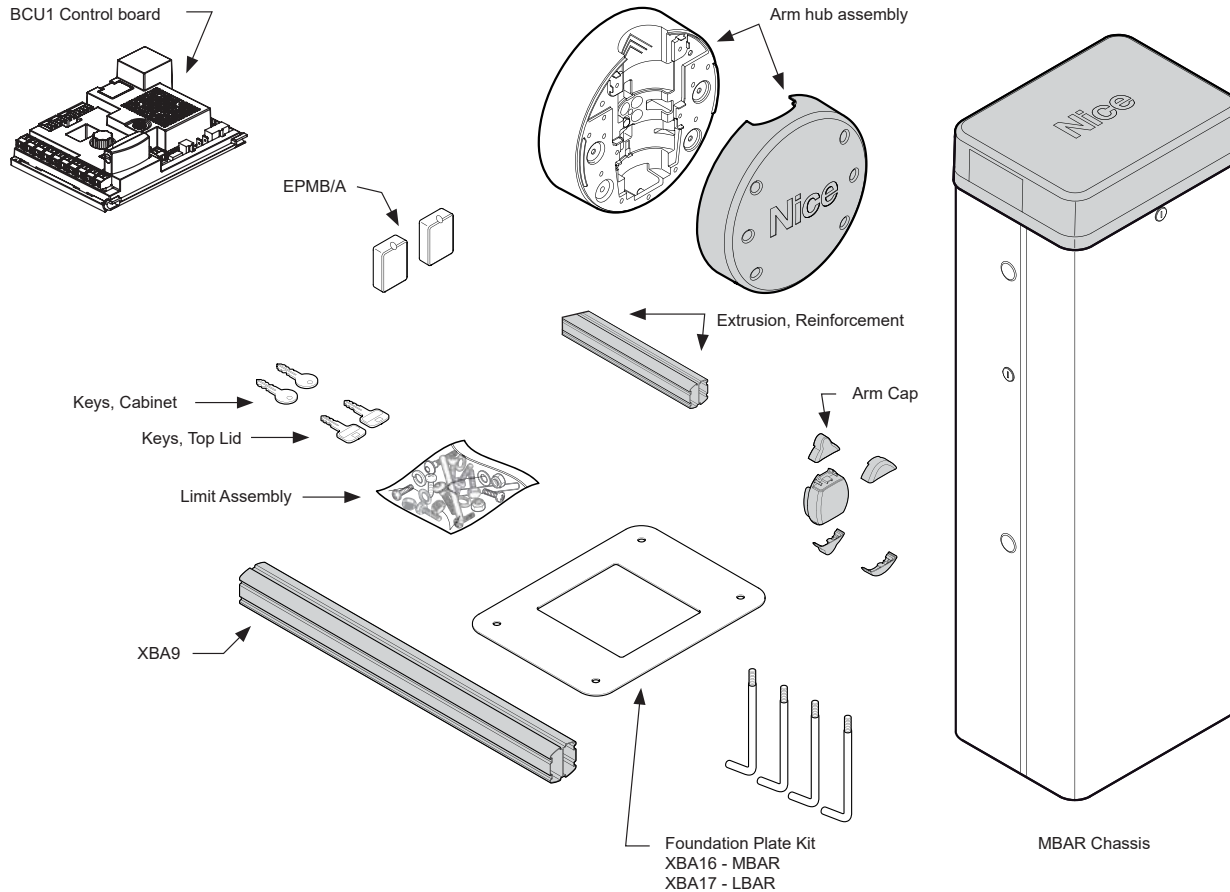
Part Name	Part Number	M-Bar / L-Bar Models
Barrier arm, XBA14	XBA14	M5BAR, M7BAR, L9BAR
Barrier arm, XBA15	XBA15	M3BAR, M5BAR, M7BAR
Barrier arm, XBA5	XBA5	L9BAR
Expansion Joint	XBA9	M7BAR, L9BAR

M-Bar / L-Bar

Part Diagrams



Chassis, Drive, Electrical and Arms



This drawing is a representation and should be used for parts reference only.

Part Name	Part Number	M-Bar / L-Bar Models
Anti-Compression Block Kit	20000155	M3BAR, M5BAR, M7BAR
Arm Cap	XBA21	all
Board, Control, XBA3/U, No Receiver	XBA3/U	all models built before January 1, 2019
Control Board, BCU1, New	BCU1	all models built after January 1, 2019
Expansion Joint	XBA9	M7BAR, L9BAR
Extrusion, Reinforcement, LBAR	PD1614A0000	L9BAR
Extrusion, Reinforcement, MBAR	PD1614B0000	M3BAR, M5BAR, M7BAR
Foundation Plate Kit, L9BAR	XBA17	L9BAR
Foundation Plate Kit, MBAR	XBA16	M3BAR, M5BAR, M7BAR
Keys, Cabinet	CM-N1.1630	all
Keys, Top Lid	CM-N2.1630	all
Limit Assembly, LBAR	SPAMG165A00	L9BAR
Limit Assembly, MBAR	SPAMG165A00B	M3BAR, M5BAR, M7BAR
Limit Assembly	20000110	M3BAR, M5BAR, M7BAR
Photo eyes, Through beam, Medium Non-Adjustable w/ BlueBUS	EPMB/A	all