

The following instructions are intended to assist the user in the installation of the Rodent Block Plate in SlideSmart DC™ gate operators. The plate prevents rodents from entering and damaging SlideSmart DC™ electrical components. Please read all installation instructions before installing the kit.

REQUIRED TOOLS:

- SlideSmart DC™ Cover Key
- 1/4" , 7/32" Allen Wrench
- 15/16" (x2) , 9/16" Open-ended Wrench
- Blue Loctite™ #242

PARTS:

Verify that all parts are accounted for. See Figure 1 and Table 1.

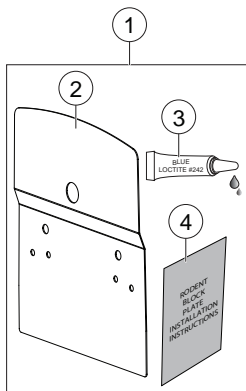


Figure 1. Rodent Block Plate Kit

Table 1. Rodent Block Plate Kit

Item No.	Part No.	Description	QTY.	Notes
1	MX4366	Rodent Block Plate Kit		Includes Items 2-4
2	MX4240	Plate, Rodent Block	1	
3	MX001137	Loctite™ #242	1	
4	D0840	Instructions, Rodent Block Plate Installation	1	

WORK SAFETY:

Only a qualified service technician with proper training should perform this installation. Follow all shop safety rules and best practices when performing this installation.

PREPARATION:

1. Make sure gate operator is turned off and moving components are idle.

2. Unlock and remove cover using key.
3. Set the cover aside.

INSTALLATION:

1. Use a 7/32 inch allen wrench and 9/16 inch open-ended wrench to remove flat head screws (2), flat washers (2), and nylon locknuts (2) from idler mount plate. See Figure 2, A.
2. Set idler mount plate aside.
3. Disconnect magnetic proximity sensor wires (4) on idler mount plate (1) from main electrical harness. See Figure 2, B.
4. Use two open-ended 15/16 inch wrenches to remove roller chain idlers (2), bolts (2), flat washers (6), bushings (2), and nylock nuts (2) from idler mount plate. See Figure 2, C.
5. Use an 1/4 inch allen wrench to remove set screws (2) and sprocket (1) from gearbox shaft. See Figure 2, D.

⚠ CAUTION

DO NOT over-tighten bolts during reassembly. Over-tightened bolts may damage bushings causing wheels to drag.

6. Align rodent block slide plate (1) flush to SlideSmart DC™ chassis ensuring bended section avoids contact with gearbox. See Figure 2, E.
7. Secure rodent block plate by performing Step 1 through Step 5 in reverse order.

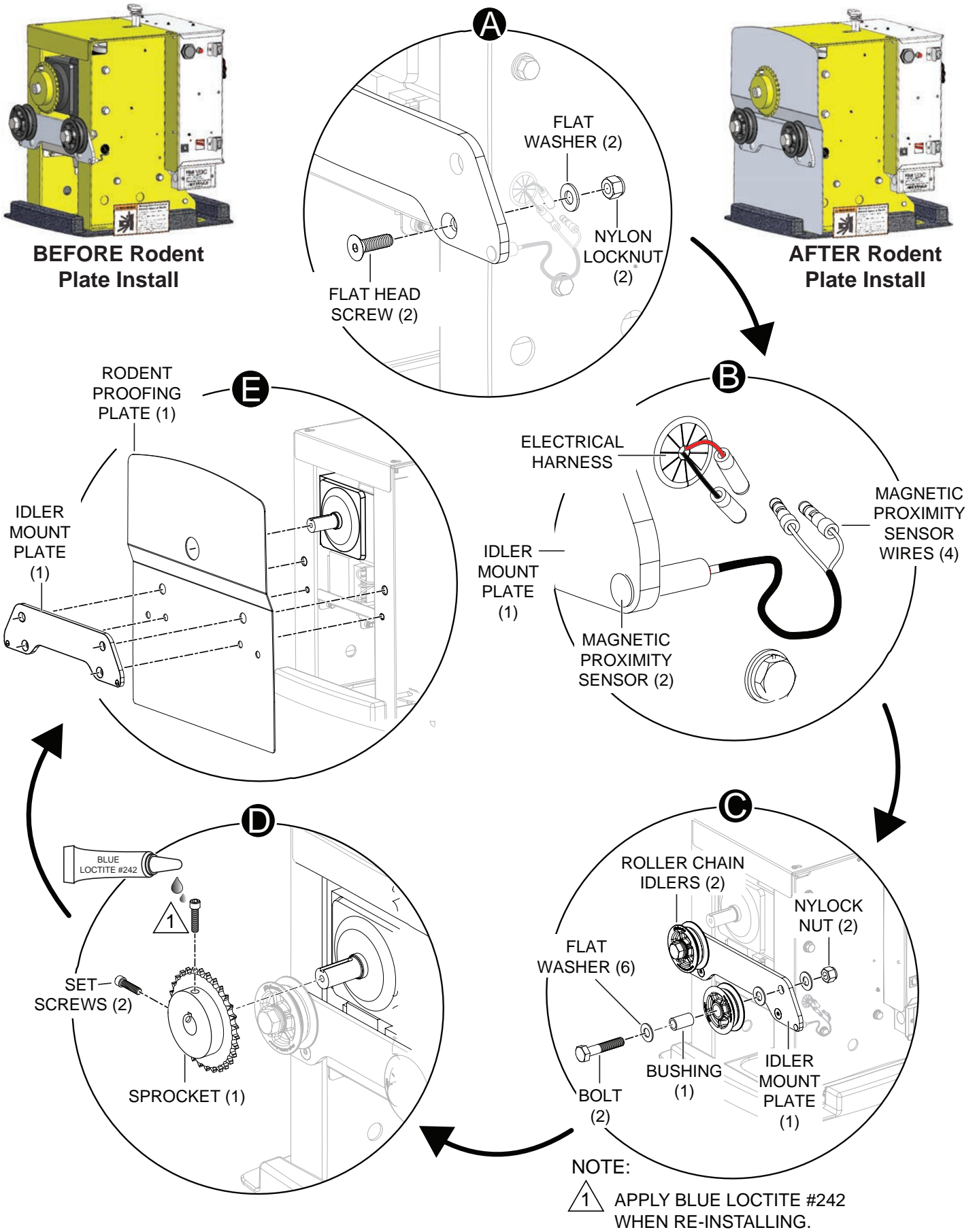


Figure 2. Rodent Block Plate Installation